

NEW MEXICO OIL CONSERVATION COMMISSION

FORM C-103
(Rev 3-55)

MISCELLANEOUS REPORTS ON WELLS

(Submit to appropriate District Office as per Commission Rule 1106)

JUL 21 1959

Name of Company Charles A. Steen			Address Box 1268 Artesia, New Mexico			
Lease Atkins-State	Well No. 2	Unit Letter K	Section 16	Township 16S	Range 29E	
Date Work Performed 4/13/59	Pool High Lonesome			County Eddy		

THIS IS A REPORT OF: (Check appropriate block)

- ☐ Beginning Drilling Operations ☐ Casing Test and Cement Job ☒ Other (Explain):
☐ Plugging ☐ Remedial Work **Completion**

Detailed account of work done, nature and quantity of materials used, and results obtained.

Perforated 1849 to 1859, with 4 Jets/ft.

Treated with 15,000 gals. lease crude plus 40,000 # 20/40 sand

Ran 2 3/8", 4.6 # Tubing to 1862.

Well placed on production.

Witnessed by Archie M. Speir	Position Prod. Supt.	Company Utex Exploration Co.
--	--------------------------------	--

FILL IN BELOW FOR REMEDIAL WORK REPORTS ONLY

ORIGINAL WELL DATA

D F Elev.	T D	P B T D	Producing Interval	Completion Date
Tubing Diameter	Tubing Depth	Oil String Diameter	Oil String Depth	
Perforated Interval(s)				
Open Hole Interval		Producing Formation(s)		

RESULTS OF WORKOVER

Test	Date of Test	Oil Production BPD	Gas Production MCFPD	Water Production BPD	GOR Cubic feet/Bbl	Gas Well Potential MCFPD
Before Workover						
After Workover						

OIL CONSERVATION COMMISSION

I hereby certify that the information given above is true and complete to the best of my knowledge.

Approved by <i>ML Armstrong</i>	Name
Title OIL AND GAS INSPECTOR	Position
Date JUL 22 1959	Company

OIL CONSERVATION COMMISSION

ARTESIA DISTRICT OFFICE

No. Copies Received

5

DISTRIBUTION

	COPIES RECEIVED
COMMISSION	
SANTA FE	3
REGISTRATION OFFICE	1
STATE LAND OFFICE	
U. S. G. S.	
TRANSPORTER	
FILE	
DEPARTMENT OF MINES	1

NEW MEXICO OIL CONSERVATION COMMISSION
Santa Fe, New Mexico

NOTICE OF INTENTION TO DRILL OR RECOMPLETE

Notice must be given to the District Office of the Oil Conservation Commission and approval obtained before drilling or recompletion begins. If changes in the proposed plan are considered advisable, a copy of this notice showing such changes will be returned to the sender. Submit this notice in QUINTUPLICATE. One copy will be returned following approval. See additional instructions in Rules and Regulations of the Commission. If State Land submit 6 Copies

Artesia, New Mexico

(Place)

3-13-59

(Date)

OIL CONSERVATION COMMISSION
SANTA FE, NEW MEXICO

30-015-02741

Gentlemen:

You are hereby notified that it is our intention to commence the (Drilling) (Recompletion) of a well to be known as

Charles A. Steen (Utah Unit)

(Company or Operator)

Atkins State

(Lease)

Well No. 2

in K

(Unit)

The well is

located 1980 feet from the South

1980

feet from the

West

line of Section 16, T. 16S

R. 29E

, NMPM.

(GIVE LOCATION FROM SECTION LINE)

High-Longstone

Pool, Eddy

County

If State Land the Oil and Gas Lease is No. B-2885

If patented land the owner is

Address

We propose to drill well with drilling equipment as follows: Rotary Tools

The status of plugging bond is Lease Bond

Drilling Contractor Utex Exploration Co.

We intend to complete this well in the San Andres

formation at an approximate depth of 3500 feet.

CASING PROGRAM

We propose to use the following strings of Casing and to cement them as indicated:

Size of Hole	Size of Casing	Weight per Foot	New or Second Hand	Depth	Sacks Cement
12 1/4	8 5/8	24.0	New	400	200
7 7/8	5 1/2	14.0	New & Used	3500	500

If changes in the above plans become advisable we will notify you immediately.

ADDITIONAL INFORMATION (If recompletion give full details of proposed plan of work.)

This is a wildcat well below the Queens fms., or approximately 1900'. Completion will be made in the Queens, if it is dry in all lower formations.

Approved MAR 16 1959, 19

Except as follows:

OIL CONSERVATION COMMISSION

By M L Armstrong

Sincerely yours,

Charles A. Steen

(Company or Operator)

By Archie M. Spier

Position Production Supt.

Send Communications regarding well to

Name Same as above

Address

NEW MEXICO OIL CONSERVATION COMMISSION
WELL LOCATION AND ACREAGE DEDICATION PLAT

FORM C-128
Revised 5/1/57

SEE INSTRUCTIONS FOR COMPLETING THIS FORM ON THE REVERSE SIDE

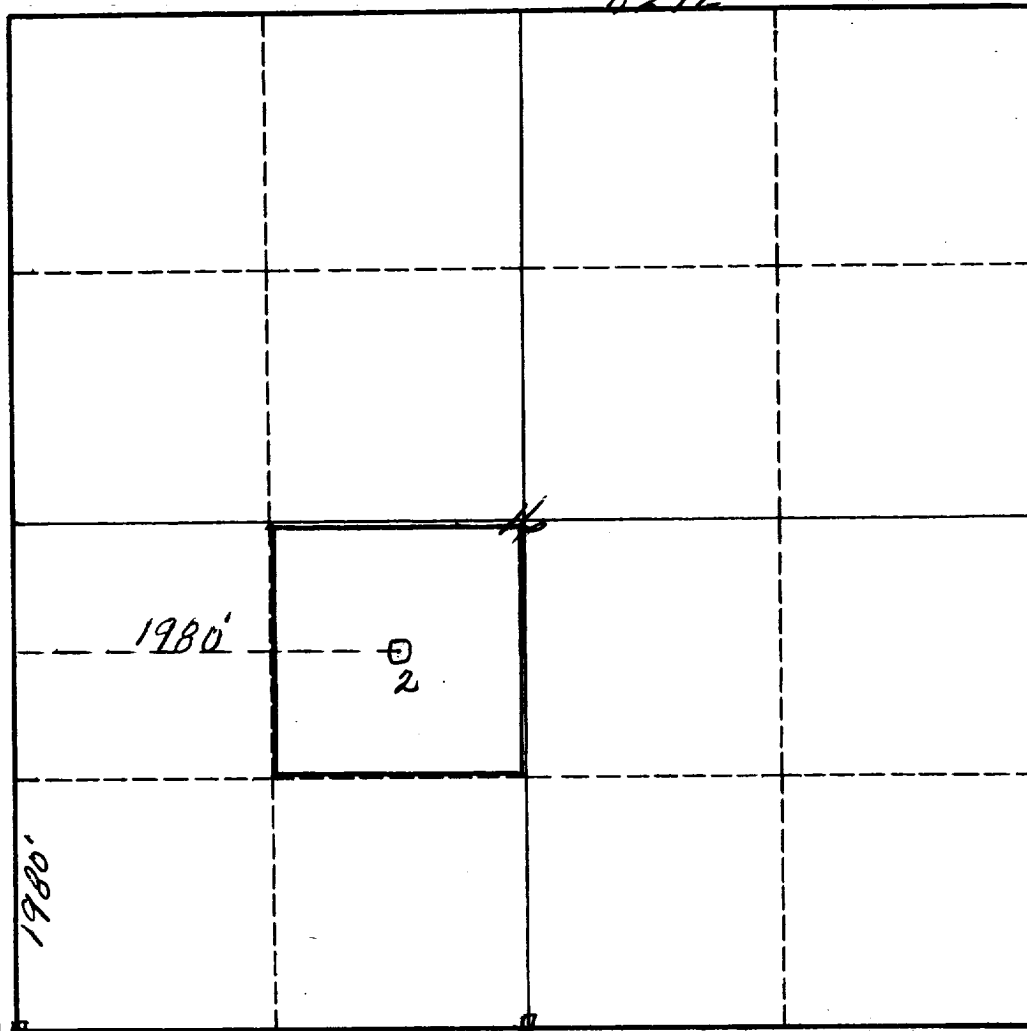
SECTION A

Operator Charles A. Steen (Utah Unit)			Lease Atkins-State		Well No. 2
Unit Letter K	Section 16	Township 16S	Range 29E	County Eddy	
Actual Footage Location of Well: 1980 feet from the South line and 1980 feet from the West line					
Ground Level Elev. 3667	Producing Formation San Andres		Pool Undesignated (Higley)		Dedicated Acreage: 40 Acres

1. Is the Operator the only owner in the dedicated acreage outlined on the plat below? YES ☒ NO ____ . ("Owner" means the person who has the right to drill into and to produce from any pool and to appropriate the production either for himself or for himself and another. (65-3-29 (e) NMSA 1935 Comp.)
2. If the answer to question one is "no," have the interests of all the owners been consolidated by communitization agreement or otherwise? YES ____ NO ____ . If answer is "yes," Type of Consolidation ____
3. If the answer to question two is "no," list all the owners and their respective interests below:

Owner	Land Description

SECTION B **R29E**



CERTIFICATION

I hereby certify that the information in SECTION A above is true and complete to the best of my knowledge and belief.

Archie M. Speer
Name

Prod. Supt.
Position

Charles A. Steen
Company

Date **3-13-1959**

I hereby certify that the well location shown on the plat in SECTION B was plotted from field notes of actual surveys made by me or under my supervision, and that the same is true and correct to the best of my knowledge and belief.

Date Surveyed
March 12th 1959
Registered Professional Engineer
and/or Land Surveyor

James H. Brown
Certificate No. **542**

INSTRUCTIONS FOR COMPLETION OF FORM C-128

1. Operator shall furnish and certify to the information called for in Section A.
2. Operator shall outline the dedicated acreage for *both* oil and gas wells on the plat in Section B.
3. A registered professional engineer or land surveyor registered in the State of New Mexico or approved by the Commission shall show on the plat the location of the well and certify this information in the space provided.
4. All distances shown on the plat must be from the outer boundaries of the Section.
5. If additional space is needed for listing owners and their respective interests as required in question 3 of Section A, please use space below.

For completion of Form C-128, the operator must provide the following information:

1

2

✓