

NM OIL CONS. COMMISSION
UNITED STATES
DEPARTMENT OF THE INTERIOR
GEOLOGICAL SURVEYSUBMIT IN DUPLICATE*
(Other instructions on
reverse side)Form approved.
Budget Bureau No. 42-R1425.

c/s

APPLICATION FOR PERMIT TO DRILL, DEEPEN, OR PLUG BACK

1a. TYPE OF WORK

DRILL ☒ Re-enterDEEPEN ☐PLUG BACK ☐

b. TYPE OF WELL

OIL
WELL ☒GAS
WELL ☐OTHER ☐

2. NAME OF OPERATOR

McClellan Oil Corporation ✓

3. ADDRESS OF OPERATOR

P.O. Drawer 730, Roswell, NM 88202

4. LOCATION OF WELL (Report location clearly and in accordance with any State requirements.)

At surface

3300' FEL & 660' FNL

At proposed prod. zone

14. DISTANCE IN MILES AND DIRECTION FROM NEAREST TOWN OR POST OFFICE*

20 miles north of Loco Hills

15. DISTANCE FROM PROPOSED*

LOCATION TO NEAREST
PROPERTY OR LEASE LINE, FT.
(Also to nearest drlg. unit line, if any)

3300'

18. DISTANCE FROM PROPOSED LOCATION*

TO NEAREST WELL, DRILLING, COMPLETED,
OR APPLIED FOR, ON THIS LEASE, FT.

-

16. NO. OF ACRES IN LEASE

40

19. PROPOSED DEPTH

1800'

17. NO. OF ACRES ASSIGNED
TO THIS WELL

40

20. ROTARY OR CABLE TOOLS

Cable Tools

21. ELEVATIONS (Show whether DF, RT, GR, etc.)

3597' G.L.

22. APPROX. DATE WORK WILL START*

8/15/85

23.

PROPOSED CASING AND CEMENTING PROGRAM

SIZE OF HOLE	SIZE OF CASING	WEIGHT PER FOOT	SETTING DEPTH	QUANTITY OF CEMENT
*	8-5/8"	24	218'	Circulated - in hole
8"	4-1/2"	9.5	1800'	500 sx

Propose to re-enter the well by drilling out cement plugs and cleaning out existing hole using a cable tool rig. Will run gamma-ray correlation log upon reaching T.D., run 4-1/2" casing and attempt completion.

Formerly Inter Expl Co.
Borehole #2

Salt 252'
Yates 678'
Queen 1435'

DTD-3401
BAG-1213

Posted IDI
8-16-85

IN ABOVE SPACE DESCRIBE PROPOSED PROGRAM: If proposal is to deepen or plug back, give data on present productive zone and proposed new productive zone. If proposal is to drill or deepen directionally, give pertinent data on subsurface locations and measured and true vertical depths. Give blowout preventer program, if any.

24.

SIGNED

TITLE

Operations Manager

DATE

7/23/85

(This space for Federal or State office use)

PERMIT NO.

APPROVAL DATE

APPROVED BY

CONDITIONS OF APPROVAL, IF ANY:

TITLE

AREA
CARLSBAD REGION

DATE

8-7-85

*See Instructions On Reverse Side

APPROVAL SUBJECT TO
GENERAL REQUIREMENTS AND
SPECIAL STIPULATIONS
ATTACHED

NEW MEXICO OIL CONSERVATION COMMISSION
WELL LOCATION AND ACREAGE DEDICATION PLAT

Form C-102
Supersedes C-128
Effective 1-1-65

All distances must be from the outer boundaries of the Section.

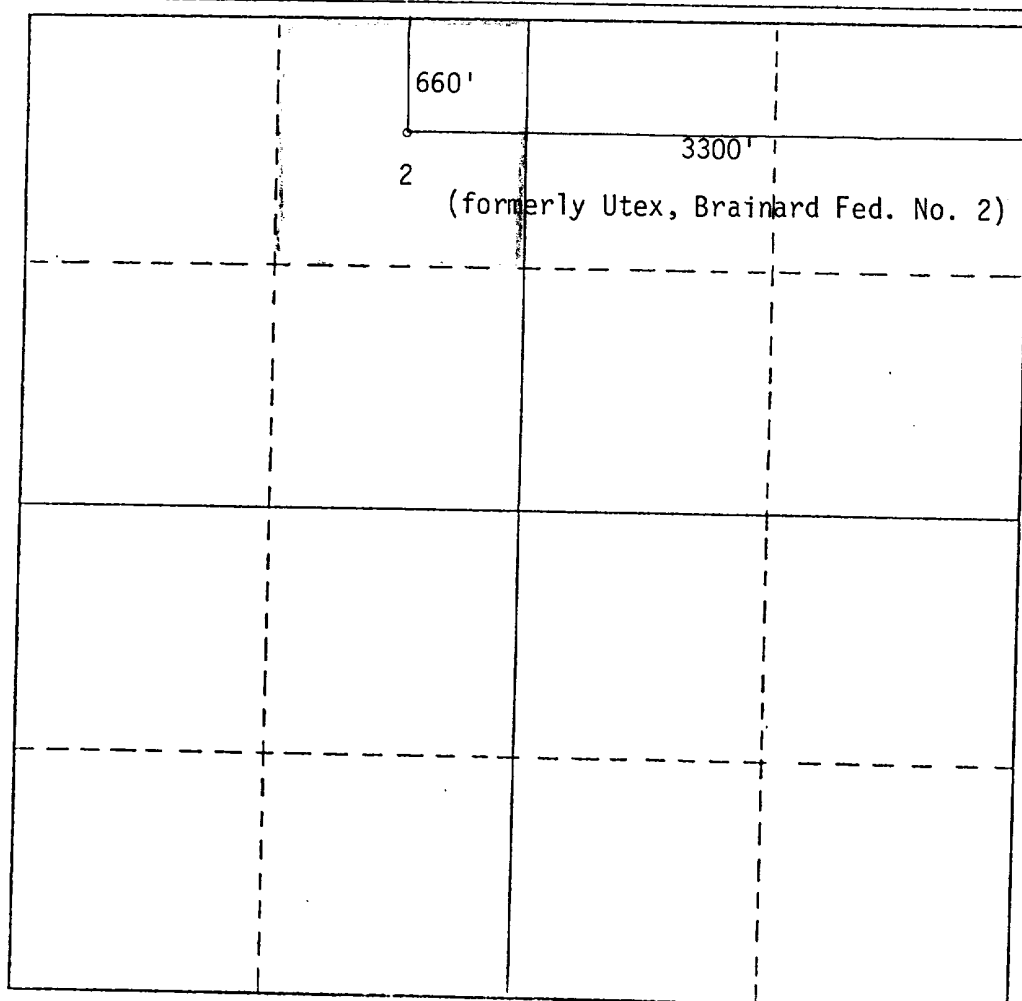
Operator McClellan Oil Corporation			Lease Big Mac Fed.		Well No. 1
Unit Letter C	Section 19	Township 16-S	Range 29-E	County Eddy	
Actual Well Location of Well:					
660		feet from the	North	Line and	3300
				feet from the	East
Ground Level Elev. 3597'	Producing Formation Penrose		Pool High Lonesome	Dedicated Acres per 40	

1. Outline the acreage dedicated to the subject well by colored pencil or hatchure marks on the plat below.
2. If more than one lease is dedicated to the well, outline each and identify the ownership thereof (both as to working interest and royalty).
3. If more than one lease of different ownership is dedicated to the well, have the interests of all owners been consolidated by communitization, unitization, force-pooling, etc?

☐ Yes ☐ No If answer is "yes," type of consolidation _____

If answer is "no," list the owners and tract descriptions which have actually been consolidated. (Use reverse side of this form if necessary.) _____

No allowable will be assigned to the well until all interests have been consolidated (by communitization, unitization, forced-pooling, or otherwise) or until a non-standard unit, eliminating such interests, has been approved by the Commission.



CERTIFICATION

I hereby certify that the information contained herein is true and complete to the best of my knowledge and belief.

Paul Ragsdale
Name

Paul Ragsdale

Position

Operations Manager

Company

McClellan Oil Corp.

Date

July 16, 1985

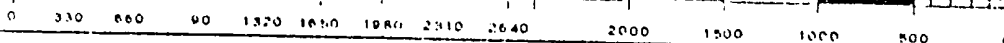
I hereby certify that the well location shown on this plat was plotted from field notes of actual surveys made by me or under my supervision, and that the same is true and correct to the best of my knowledge and belief.

See attached plat

Date Surveyed

Registered Professional Engineer
and/or Land Surveyor

Certificate No.



DESIGNATION OF OPERATOR

The undersigned is, on the records of the Bureau of Land Management, holder of lease

DISTRICT LAND OFFICE: Santa Fe, New Mexico
SERIAL No.: NM-57524

and hereby designates

NAME: McCLELLAN OIL CORPORATION
ADDRESS: P. O. Drawer 730
Roswell, New Mexico 88202

as his operator and local agent, with full authority to act in his behalf in complying with the terms of the lease and regulations applicable thereto and on whom the supervisor or his representative may serve written or oral instructions in securing compliance with the Operating Regulations with respect to (describe acreage to which this designation is applicable):

TOWNSHIP 16 SOUTH, RANGE 29 EAST, N.M.P.M.

Section 19 : NE $\frac{1}{4}$ NW $\frac{1}{4}$

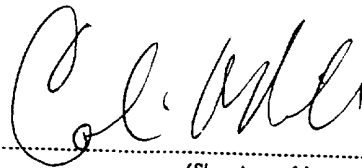
containing 40 acres, more or less
Eddy County, New Mexico

AS TO THE RIGHTS FROM THE SURFACE TO A DEPTH OF 1900' ONLY.

It is understood that this designation of operator does not relieve the lessee of responsibility for compliance with the terms of the lease and the Operating Regulations. It is also understood that this designation of operator does not constitute an assignment of any interest in the lease.

In case of default on the part of the designated operator, the lessee will make full and prompt compliance with all regulations, lease terms, or orders of the Secretary of the Interior or his representative.

The lessee agrees promptly to notify the supervisor of any change in the designated operator.



(Signature of lessee)

COLIN McMILLAN

7/16/85

(Date)

118 West First Street, Roswell, NM 88201
(Address)

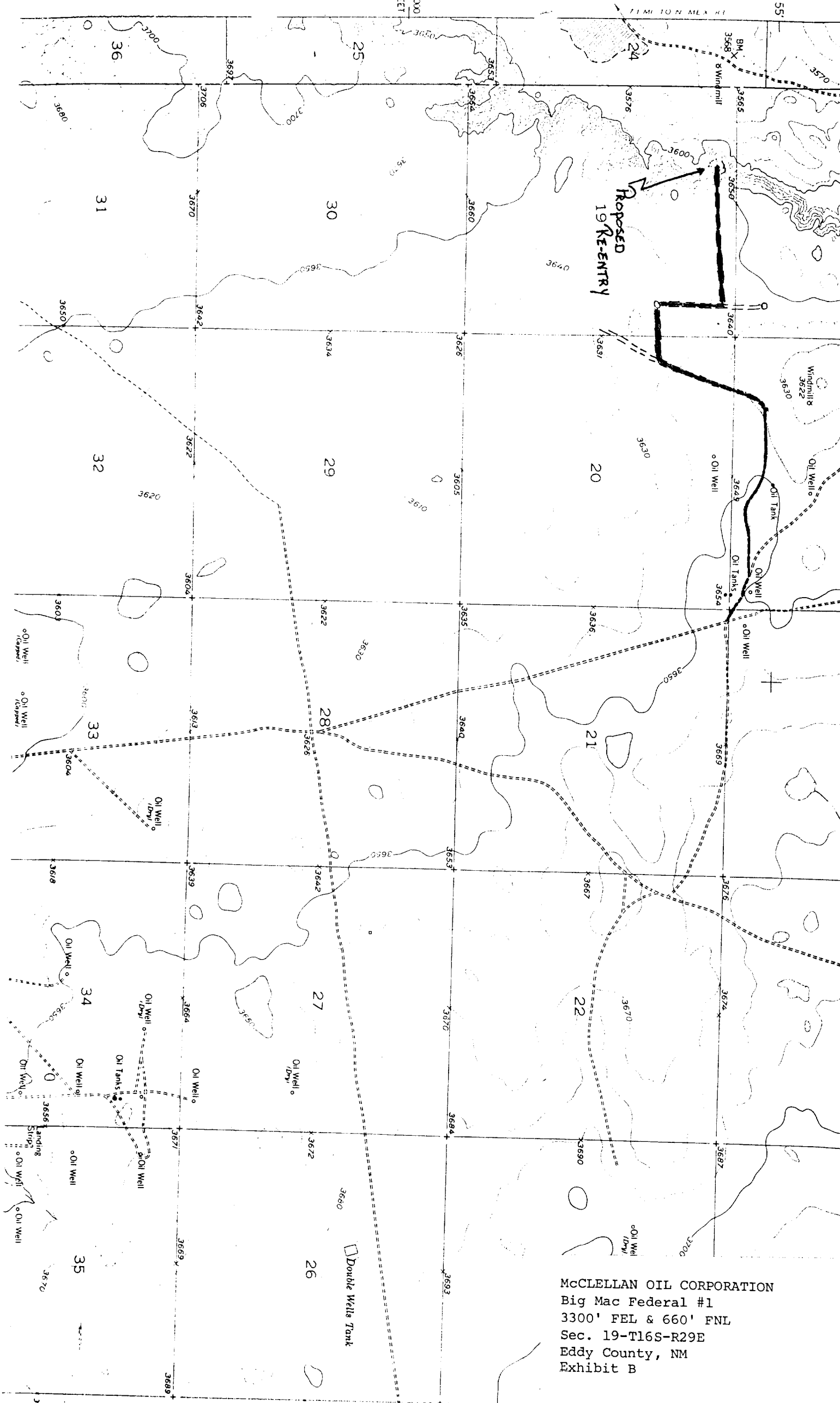
McClellan Oil Corp.
Big Mac Fed. No. 1

REQUIREMENTS
(NTL-6)

1. Location: 660' FNL & 3300' FEL of Section 19-T16S-R29E, Eddy County
2. Elevation: 3957' G.L.
3. Geologic name of surface formation: See archaeological report
4. Type of drilling rig and associated equipment: Cable Tool
5. Proposed drilling depth and objective formation: 1800', Penrose
6. Estimated tops of geologic markers:

Yates	<u>678'</u>	San Andres	<u> </u>	Abo	<u> </u>
7-Rivers	<u> </u>	Glorieta	<u> </u>	Wolfcamp	<u> </u>
Queen	<u>1435'</u>	Tubb	<u> </u>		
7. Estimated depths of any oil, water, or gas: Possible oil at 1676'.
- 8-9. Proposed casing program:

<u>8-5/8"</u>	@	<u>218'</u>	Grade	<u>NA</u>	Wt.	<u>24 lb.</u>	Type Cement	<u>Circ.-in hole</u>
<u>4-1/2"</u>	@	<u>1800'</u>	Grade	<u>J-55</u>	Wt.	<u>9.5 lb.</u>	Type Cement	<u>500 sx</u>
10. Specifications for pressure control equipment and testing procedures:
Schaeffer type E 10" series 900 hydraulic BOP
11. Type and characteristics of drilling fluids: Fresh water with 40 viscosity.
12. Testing, logging, and coring programs: Will run gamma ray correlation log.
13. Anticipated abnormal pressures or temperature: None anticipated
14. Anticipated commencement and completion date:
August 15, 1985 - August 30, 1985

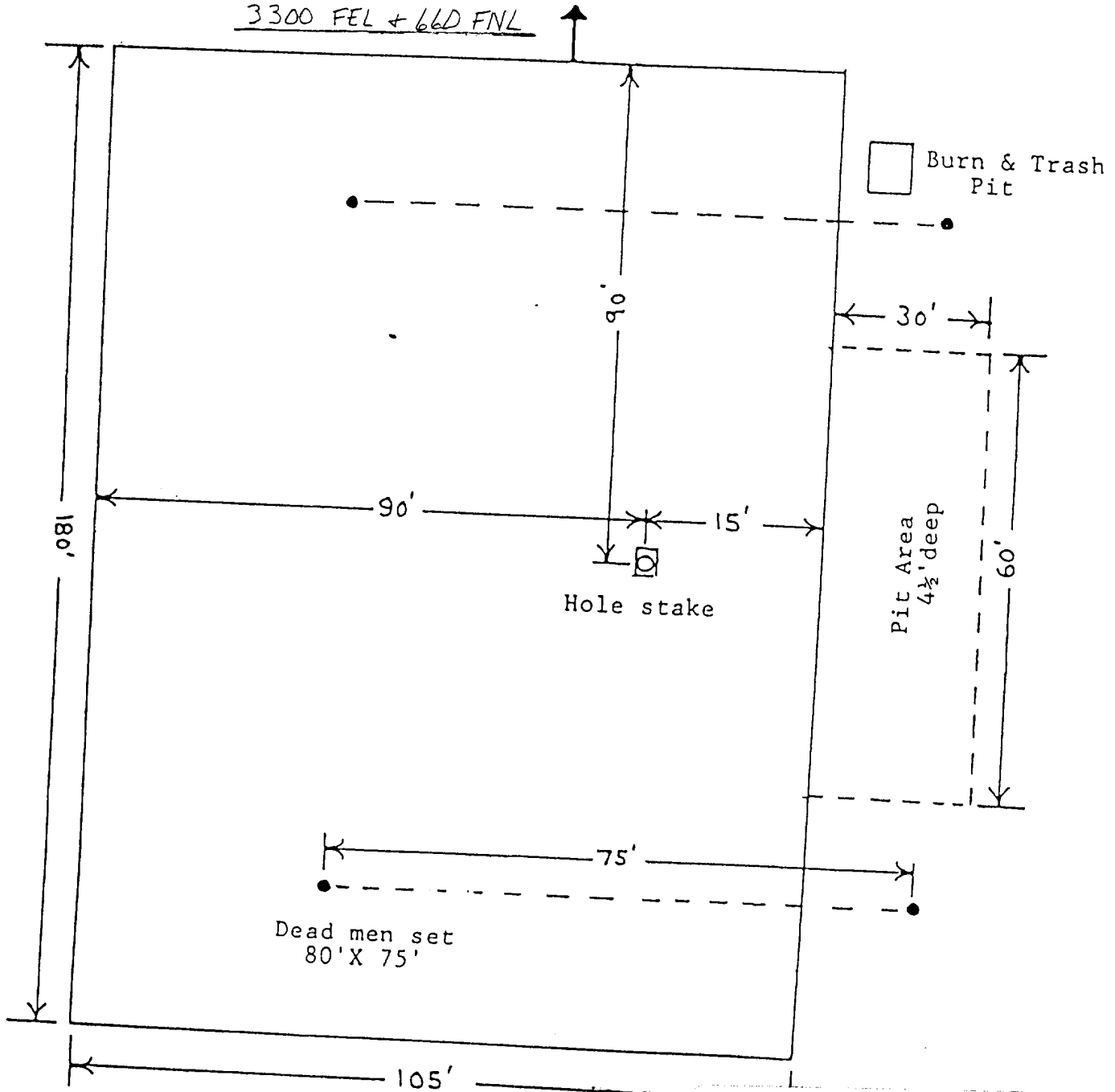


McCLELLAN OIL CORPORATION
Big Mac Federal #1
3300' FEL & 660' FNL
Sec. 19-T16S-R29E
Eddy County, NM
Exhibit B



McClellan Oil Corporation
Box 730
Roswell, New Mexico 88201

WELL Big Mac Federal No. 1
LOCATION Sec 19-T16S-R29E
3300 FEL + 660 FNL



CABLE TOOL LOCATION PLAT

MCCLELLAN OIL CORPORATION
Big Mac Federal #1
3300' FEL & 660' FNL
Sec. 19-T16S-R29E
Eddy County, NM
Exhibit D