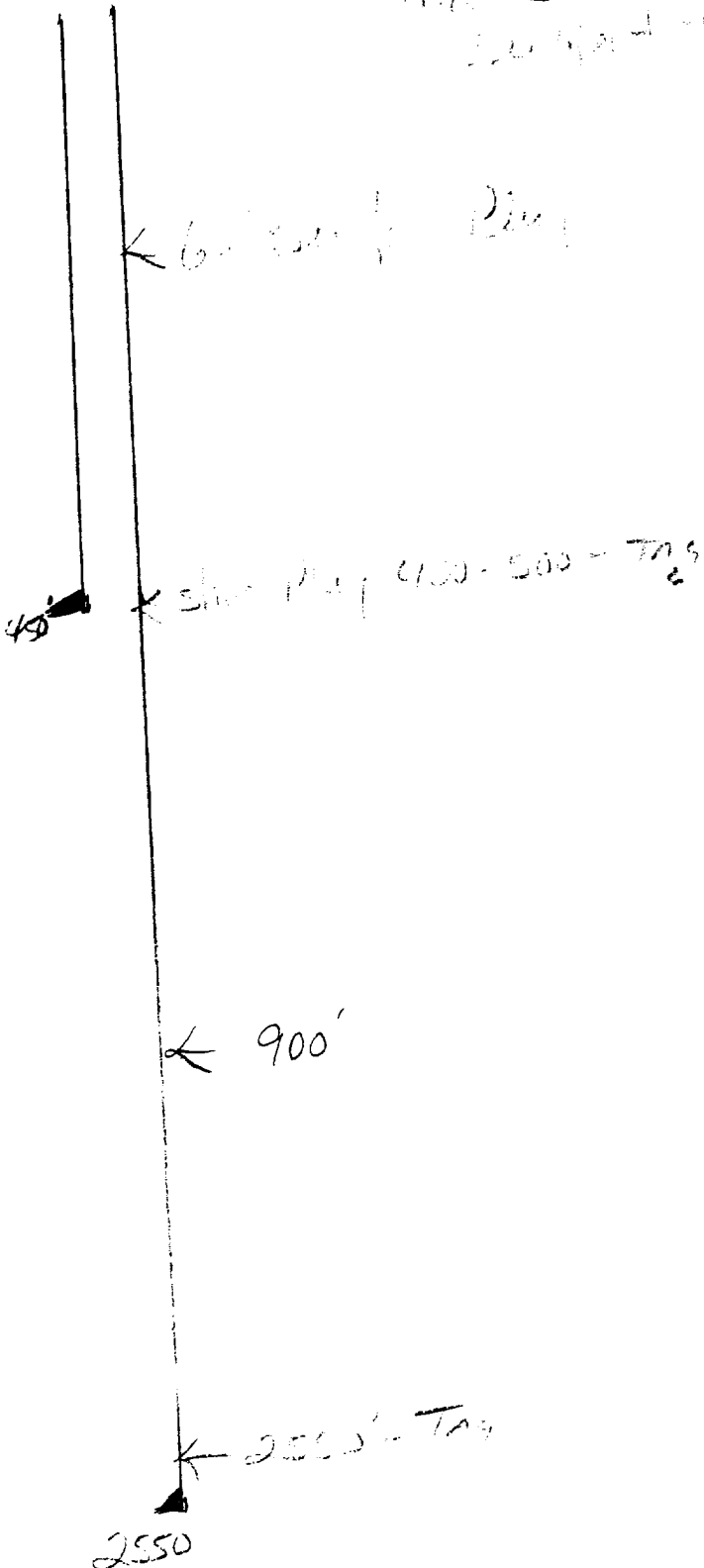


Operator C.F.M. OJ Co  
Well Forest Pool U. #12  
Unit L Section 35 Township 16 Range 29  
API # 30-015--02306

T. S. \_\_\_\_\_  
B. San \_\_\_\_\_  
Yates \_\_\_\_\_  
Glorieta \_\_\_\_\_  
Delaware \_\_\_\_\_  
Bone Sp. \_\_\_\_\_  
Abo \_\_\_\_\_  
Wolfcamp \_\_\_\_\_  
Morrow \_\_\_\_\_  
Devonian \_\_\_\_\_  
Fusselman \_\_\_\_\_  
Other \_\_\_\_\_

*- 16 200' in  
well - All plugs  
100' - 16 200' -*



- Contact OCD 24 hrs. prior to any work done.
- Salt gel mud consisting of 10# brine with 25# of gel per barrel must be placed between each plug
- Install dry hole marker as per rule 202.B.2
- Plugs are to be set from point indicated up. Plugs must not be less than 100' or 25 Sacks of cement, whichever is greater, unless specifically indicated.
- Shoe and stub plugs will be 50' above and below shoe or stub and tagged.
- Surface plug will be from 0' - 60'
- Where plugs are required cement must be placed inside and outside of all casing string(s), in the correct footage or sacks required, if no cement exists.
- Plugs to be tagged will be indicated.