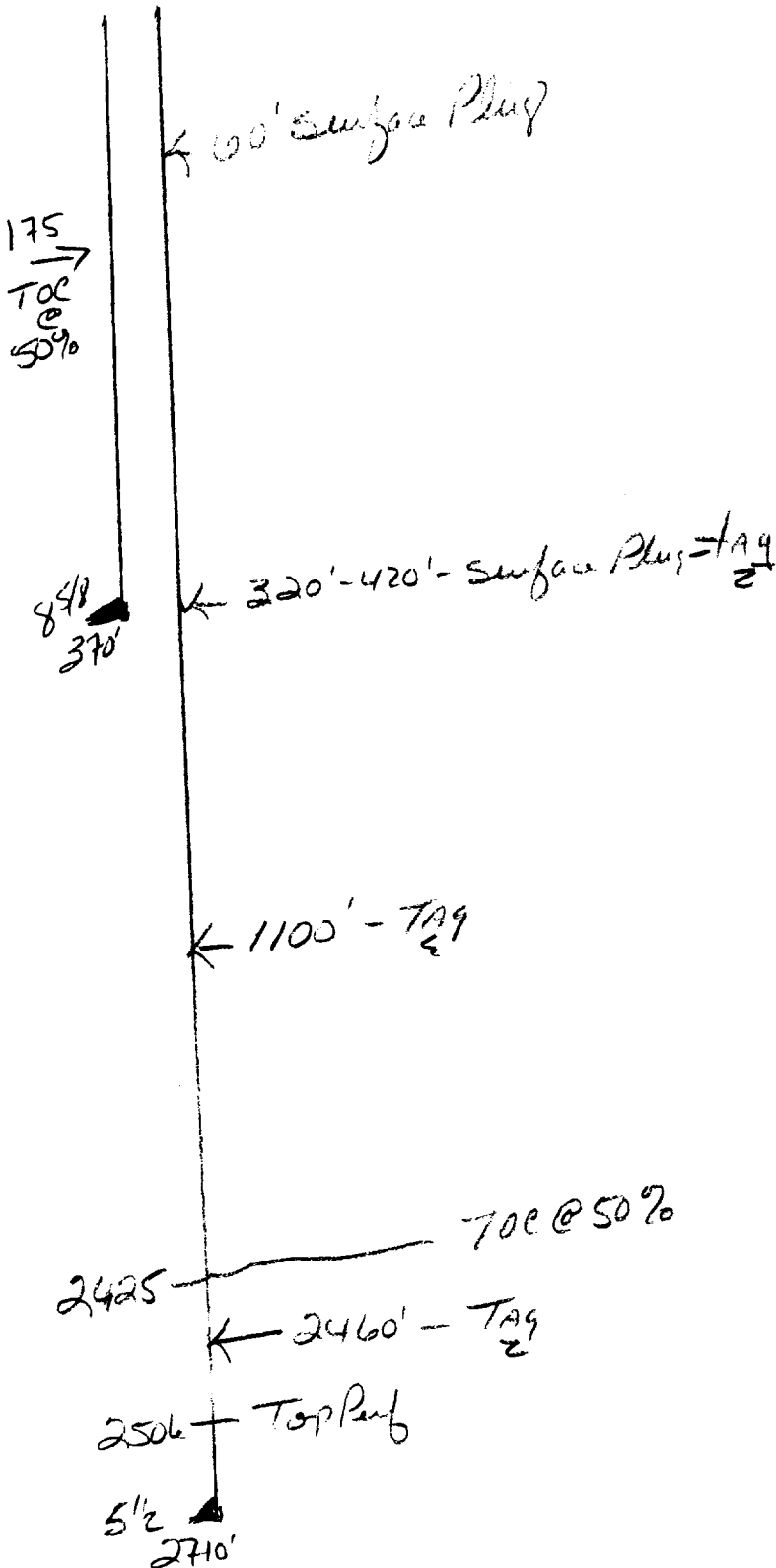


Operator C. E. LaRue - R.N. Muncy  
 Well Leonard #1  
 Unit F Section 36 Township 16 Range 29  
 API# 30-015--02818

TOPS

T. Salt 536  
 B. Salt 977  
 Yates 1134  
 Glorieta \_\_\_\_\_  
 Delaware \_\_\_\_\_  
 Bone Sp. \_\_\_\_\_  
 Abo \_\_\_\_\_  
 Wolfcamp \_\_\_\_\_  
 Morrow \_\_\_\_\_  
 Devonian \_\_\_\_\_  
 Fusselman \_\_\_\_\_  
 Other \_\_\_\_\_



- Contact OCD 24 hrs. prior to any work done.
- Salt gel mud consisting of 10# brine with 25# of gel per barrel must be placed between each plug
- Install dry hole marker as per rule 202.B.2
- Plugs are to be set from point indicated up. Plugs must not be less than 100' or 25 Sacks of cement, whichever is greater, unless specifically indicated.
- Shoe and stub plugs will be 50' above and below shoe or stub and tagged.
- Surface plug will be from 0' - 60'
- Where plugs are required cement must be placed inside and outside of all casing string(s), in the correct footage or sacks required, if no cement exists.
- Plugs to be tagged will be indicated.