

## NEW MEXICO OIL CONSERVATION COMMISSION

Santa Fe, New Mexico

(Form C-104)

Revised 7/1/57

REQUEST FOR ~~WELL~~ - (GAS) ALLOWABLENew Well  
Recompletion

This form shall be submitted by the operator before an initial allowable will be assigned to any completed Oil or Gas well. Form C-104 is to be submitted in QUADRUPLICATE to the same District Office to which Form C-101 was sent. The allowable will be assigned effective 7:00 A.M. on date of completion or recompletion, provided this form is filed during calendar month of completion or recompletion. The completion date shall be that date in the case of an oil well when new oil is delivered into the stock tanks. Gas must be reported on 15.025 psia at 60° Fahrenheit.

Lubbock, Texas September 15, 1960

(Place)

(Date)

WE ARE HEREBY REQUESTING AN ALLOWABLE FOR A WELL KNOWN AS:

The Darcy Corporation Federal-Lillie, Well No. 1, in NE 1/4 SW 1/4,  
(Company or Operator) (Lease)

K Sec. 10 T16S R30E NMPM, ~~Edy Co. Undesignated Gas Pool~~  
Unit Letter

Eddy

County. Date Spudded 5-23-60 Date Drilling Completed 7-2-60

Please indicate location:

Elevation 3831 Total Depth 3030 PBD 2712

Top Gas Pay 2667 Name of Prod. Form. Loco Hills

## PRODUCING INTERVAL -

Perforations 2667-2684

Open Hole None Depth Casing Shoe 2715 Depth Tubing none

## OIL WELL TEST -

Natural Prod. Test: bbls. oil, bbls water in hrs, min. Size Choke

Test After Acid or Fracture Treatment (after recovery of volume of oil equal to volume of load oil used): bbls. oil, bbls water in hrs, min. Size Choke

## GAS WELL TEST -

Natural Prod. Test: 124 MCF/Day; Hours flowed 1 Choke Size 2" open

Method of Testing (pitot, back pressure, etc.): Orifice well tester.

Test After Acid or Fracture Treatment: 806.0 MCF/Day; Hours flowed 28

Choke Size 20/64 Method of Testing: Abs. Pot. 460 MCFD

Acid or Fracture Treatment (Give amounts of materials used, such as acid, water, oil, and sand): 250 gal. acid Frac 8,800 gal. water w/13,500 lbs sand

Casing Tubing Date first new Press. 3400 Press. - oil run to tanks Dry gas vented 7-12-60

Oil Transporter none

Gas Transporter Phillips Petroleum Company

Remarks:

I hereby certify that the information given above is true and complete to the best of my knowledge.

Approved SEP 20 1960, 19

The Darcy Corporation  
(Company or Operator)

OIL CONSERVATION COMMISSION

By: M. L. Armstrong

By: Carl S. Mueller  
(Signature)Title: Petroleum Engineer  
Send Communications regarding well to:

Title: OIL AND GAS INSPECTOR

Name: The Darcy Corporation

Address: 4409 W. 17th St. Lubbock, Tex.

1. DATE \_\_\_\_\_  
 2. TIME \_\_\_\_\_  
 3. LOCATION \_\_\_\_\_  
 4. WIND \_\_\_\_\_  
 5. SEA \_\_\_\_\_  
 6. WAVE \_\_\_\_\_  
 7. TEMP \_\_\_\_\_  
 8. WIND \_\_\_\_\_  
 9. SEA \_\_\_\_\_  
 10. WAVE \_\_\_\_\_  
 11. TEMP \_\_\_\_\_  
 12. WIND \_\_\_\_\_  
 13. SEA \_\_\_\_\_  
 14. WAVE \_\_\_\_\_  
 15. TEMP \_\_\_\_\_  
 16. WIND \_\_\_\_\_  
 17. SEA \_\_\_\_\_  
 18. WAVE \_\_\_\_\_  
 19. TEMP \_\_\_\_\_  
 20. WIND \_\_\_\_\_  
 21. SEA \_\_\_\_\_  
 22. WAVE \_\_\_\_\_  
 23. TEMP \_\_\_\_\_  
 24. WIND \_\_\_\_\_  
 25. SEA \_\_\_\_\_  
 26. WAVE \_\_\_\_\_  
 27. TEMP \_\_\_\_\_  
 28. WIND \_\_\_\_\_  
 29. SEA \_\_\_\_\_  
 30. WAVE \_\_\_\_\_  
 31. TEMP \_\_\_\_\_  
 32. WIND \_\_\_\_\_  
 33. SEA \_\_\_\_\_  
 34. WAVE \_\_\_\_\_  
 35. TEMP \_\_\_\_\_  
 36. WIND \_\_\_\_\_  
 37. SEA \_\_\_\_\_  
 38. WAVE \_\_\_\_\_  
 39. TEMP \_\_\_\_\_  
 40. WIND \_\_\_\_\_  
 41. SEA \_\_\_\_\_  
 42. WAVE \_\_\_\_\_  
 43. TEMP \_\_\_\_\_  
 44. WIND \_\_\_\_\_  
 45. SEA \_\_\_\_\_  
 46. WAVE \_\_\_\_\_  
 47. TEMP \_\_\_\_\_  
 48. WIND \_\_\_\_\_  
 49. SEA \_\_\_\_\_  
 50. WAVE \_\_\_\_\_  
 51. TEMP \_\_\_\_\_  
 52. WIND \_\_\_\_\_  
 53. SEA \_\_\_\_\_  
 54. WAVE \_\_\_\_\_  
 55. TEMP \_\_\_\_\_  
 56. WIND \_\_\_\_\_  
 57. SEA \_\_\_\_\_  
 58. WAVE \_\_\_\_\_  
 59. TEMP \_\_\_\_\_  
 60. WIND \_\_\_\_\_  
 61. SEA \_\_\_\_\_  
 62. WAVE \_\_\_\_\_  
 63. TEMP \_\_\_\_\_  
 64. WIND \_\_\_\_\_  
 65. SEA \_\_\_\_\_  
 66. WAVE \_\_\_\_\_  
 67. TEMP \_\_\_\_\_  
 68. WIND \_\_\_\_\_  
 69. SEA \_\_\_\_\_  
 70. WAVE \_\_\_\_\_  
 71. TEMP \_\_\_\_\_  
 72. WIND \_\_\_\_\_  
 73. SEA \_\_\_\_\_  
 74. WAVE \_\_\_\_\_  
 75. TEMP \_\_\_\_\_  
 76. WIND \_\_\_\_\_  
 77. SEA \_\_\_\_\_  
 78. WAVE \_\_\_\_\_  
 79. TEMP \_\_\_\_\_  
 80. WIND \_\_\_\_\_  
 81. SEA \_\_\_\_\_  
 82. WAVE \_\_\_\_\_  
 83. TEMP \_\_\_\_\_  
 84. WIND \_\_\_\_\_  
 85. SEA \_\_\_\_\_  
 86. WAVE \_\_\_\_\_  
 87. TEMP \_\_\_\_\_  
 88. WIND \_\_\_\_\_  
 89. SEA \_\_\_\_\_  
 90. WAVE \_\_\_\_\_  
 91. TEMP \_\_\_\_\_  
 92. WIND \_\_\_\_\_  
 93. SEA \_\_\_\_\_  
 94. WAVE \_\_\_\_\_  
 95. TEMP \_\_\_\_\_  
 96. WIND \_\_\_\_\_  
 97. SEA \_\_\_\_\_  
 98. WAVE \_\_\_\_\_  
 99. TEMP \_\_\_\_\_  
 100. WIND \_\_\_\_\_  
 101. SEA \_\_\_\_\_  
 102. WAVE \_\_\_\_\_  
 103. TEMP \_\_\_\_\_  
 104. WIND \_\_\_\_\_  
 105. SEA \_\_\_\_\_  
 106. WAVE \_\_\_\_\_  
 107. TEMP \_\_\_\_\_  
 108. WIND \_\_\_\_\_  
 109. SEA \_\_\_\_\_  
 110. WAVE \_\_\_\_\_  
 111. TEMP \_\_\_\_\_  
 112. WIND \_\_\_\_\_  
 113. SEA \_\_\_\_\_  
 114. WAVE \_\_\_\_\_  
 115. TEMP \_\_\_\_\_  
 116. WIND \_\_\_\_\_  
 117. SEA \_\_\_\_\_  
 118. WAVE \_\_\_\_\_  
 119. TEMP \_\_\_\_\_  
 120. WIND \_\_\_\_\_  
 121. SEA \_\_\_\_\_  
 122. WAVE \_\_\_\_\_  
 123. TEMP \_\_\_\_\_  
 124. WIND \_\_\_\_\_  
 125. SEA \_\_\_\_\_  
 126. WAVE \_\_\_\_\_  
 127. TEMP \_\_\_\_\_  
 128. WIND \_\_\_\_\_  
 129. SEA \_\_\_\_\_  
 130. WAVE \_\_\_\_\_  
 131. TEMP \_\_\_\_\_  
 132. WIND \_\_\_\_\_  
 133. SEA \_\_\_\_\_  
 134. WAVE \_\_\_\_\_  
 135. TEMP \_\_\_\_\_  
 136. WIND \_\_\_\_\_  
 137. SEA \_\_\_\_\_  
 138. WAVE \_\_\_\_\_  
 139. TEMP \_\_\_\_\_  
 140. WIND \_\_\_\_\_  
 141. SEA \_\_\_\_\_  
 142. WAVE \_\_\_\_\_  
 143. TEMP \_\_\_\_\_  
 144. WIND \_\_\_\_\_  
 145. SEA \_\_\_\_\_  
 146. WAVE \_\_\_\_\_  
 147. TEMP \_\_\_\_\_  
 148. WIND \_\_\_\_\_  
 149. SEA \_\_\_\_\_  
 150. WAVE \_\_\_\_\_  
 151. TEMP \_\_\_\_\_  
 152. WIND \_\_\_\_\_  
 153. SEA \_\_\_\_\_  
 154. WAVE \_\_\_\_\_  
 155. TEMP \_\_\_\_\_  
 156. WIND \_\_\_\_\_  
 157. SEA \_\_\_\_\_  
 158. WAVE \_\_\_\_\_  
 159. TEMP \_\_\_\_\_  
 160. WIND \_\_\_\_\_  
 161. SEA \_\_\_\_\_  
 162. WAVE \_\_\_\_\_  
 163. TEMP \_\_\_\_\_  
 164. WIND \_\_\_\_\_  
 165. SEA \_\_\_\_\_  
 166. WAVE \_\_\_\_\_  
 167. TEMP \_\_\_\_\_  
 168. WIND \_\_\_\_\_  
 169. SEA \_\_\_\_\_  
 170. WAVE \_\_\_\_\_  
 171. TEMP \_\_\_\_\_  
 172. WIND \_\_\_\_\_  
 173. SEA \_\_\_\_\_  
 174. WAVE \_\_\_\_\_  
 175. TEMP \_\_\_\_\_  
 176. WIND \_\_\_\_\_  
 177. SEA \_\_\_\_\_  
 178. WAVE \_\_\_\_\_  
 179. TEMP \_\_\_\_\_  
 180. WIND \_\_\_\_\_  
 181. SEA \_\_\_\_\_  
 182. WAVE \_\_\_\_\_  
 183. TEMP \_\_\_\_\_  
 184. WIND \_\_\_\_\_  
 185. SEA \_\_\_\_\_  
 186. WAVE \_\_\_\_\_  
 187. TEMP \_\_\_\_\_  
 188. WIND \_\_\_\_\_  
 189. SEA \_\_\_\_\_  
 190. WAVE \_\_\_\_\_  
 191. TEMP \_\_\_\_\_  
 192. WIND \_\_\_\_\_  
 193. SEA \_\_\_\_\_  
 194. WAVE \_\_\_\_\_  
 195. TEMP \_\_\_\_\_  
 196. WIND \_\_\_\_\_  
 197. SEA \_\_\_\_\_  
 198. WAVE \_\_\_\_\_  
 199. TEMP \_\_\_\_\_  
 200. WIND \_\_\_\_\_  
 201. SEA \_\_\_\_\_  
 202. WAVE \_\_\_\_\_  
 203. TEMP \_\_\_\_\_  
 204. WIND \_\_\_\_\_  
 205. SEA \_\_\_\_\_  
 206. WAVE \_\_\_\_\_  
 207. TEMP \_\_\_\_\_  
 208. WIND \_\_\_\_\_  
 209. SEA \_\_\_\_\_  
 210. WAVE \_\_\_\_\_  
 211. TEMP \_\_\_\_\_  
 212. WIND \_\_\_\_\_  
 213. SEA \_\_\_\_\_  
 214. WAVE \_\_\_\_\_  
 215. TEMP \_\_\_\_\_  
 216. WIND \_\_\_\_\_  
 217. SEA \_\_\_\_\_  
 218. WAVE \_\_\_\_\_  
 219. TEMP \_\_\_\_\_  
 220. WIND \_\_\_\_\_  
 221. SEA \_\_\_\_\_  
 222. WAVE \_\_\_\_\_  
 223. TEMP \_\_\_\_\_  
 224. WIND \_\_\_\_\_  
 225. SEA \_\_\_\_\_  
 226. WAVE \_\_\_\_\_  
 227. TEMP \_\_\_\_\_  
 2

NEW MEXICO OIL CONSERVATION COMMISSION  
SANTA FE, NEW MEXICO

Form C-110  
Revised 7/1/55

(File the original and 4 copies with the appropriate district office)

CERTIFICATE OF COMPLIANCE AND AUTHORIZATION  
TO TRANSPORT OIL AND NATURAL GAS

RECEIVED  
SEP 19 1960  
FEDERAL OFFICE

Company or Operator The Darcy Corporation Lease Federal  
Well No. 1 Unit Letter K-S 10 T 16S R 30E Pool Undesignated Gas  
County Eddy Kind of Lease (State, Fed. or Patented) Federal  
If well produces oil or condensate, give location of tanks: Unit S T R  
Authorized Transporter of Oil or Condensate Dry Gas

Address \_\_\_\_\_  
(Give address to which approved copy of this form is to be sent)  
Authorized Transporter of Gas Phillips Petroleum Company  
Address Adams Building, Bartlesville, Oklahoma Date Connected Est. 10-1-60  
(Give address to which approved copy of this form is to be sent)  
If Gas is not being sold, give reasons and also explain its present disposition:

Reasons for Filing: (Please check proper box) New Well ☐   
Change in Transporter of (Check One): Oil ☐ Dry Gas ☐ C'head ☐ Condensate ☐   
Change in Ownership ☐ Other ☐   
Remarks: \_\_\_\_\_ (Give explanation below)

The undersigned certifies that the Rules and Regulations of the Oil Conservation Commission have been complied with.

Executed this the 15 day of September 1960

By Carl B. Mueller  
Carl B. Mueller  
Title Petroleum Engineer

Approved \_\_\_\_\_ 19 \_\_\_\_\_

OIL CONSERVATION COMMISSION

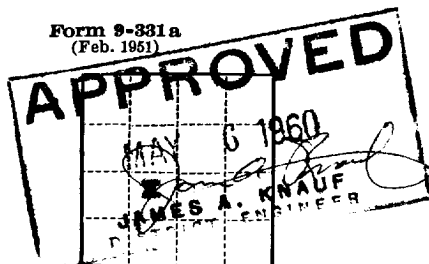
By M. L. Armstrong  
Title OIL AND GAS INSPECTOR

Company The Darcy Corporation  
Address 4409 W. 17th St.  
Lubbock, Texas

INVESTIGATION COMMISSION	
PENNSYLVANIA DISTRICT OFFICE	
ALL COPIES RELAYED	3
DATE RECEIVED	
TIME	
BY	
FOR	
REMARKS	
BUREAU OF INVESTIGATION	

N. M. D. C. COPY

Budget Bureau No. 42-R358.4.  
Approval expires 12-31-60.



(SUBMIT IN TRIPLICATE)

UNITED STATES  
DEPARTMENT OF THE INTERIOR  
GEOLOGICAL SURVEY

Land Office **Las Cruces**  
Lease No. **069313**  
Unit **RECEIVED**

MAY 11 1960  
30-015-03881  
D. C. C.  
ARTESIAN OFFICE

SUNDRY NOTICES AND REPORTS ON WELLS

NOTICE OF INTENTION TO DRILL.....	<input checked="" type="checkbox"/>	SUBSEQUENT REPORT OF WATER SHUT-OFF.....	
NOTICE OF INTENTION TO CHANGE PLANS.....		SUBSEQUENT REPORT OF SHOOTING OR ACIDIZING.....	
NOTICE OF INTENTION TO TEST WATER SHUT-OFF.....		SUBSEQUENT REPORT OF ALTERING CASING.....	
NOTICE OF INTENTION TO RE-DRILL OR REPAIR WELL.....		SUBSEQUENT REPORT OF RE-DRILLING OR REPAIR.....	
NOTICE OF INTENTION TO SHOOT OR ACIDIZE.....		SUBSEQUENT REPORT OF ABANDONMENT.....	
NOTICE OF INTENTION TO PULL OR ALTER CASING.....		SUPPLEMENTARY WELL HISTORY.....	
NOTICE OF INTENTION TO ABANDON WELL.....			

(INDICATE ABOVE BY CHECK MARK NATURE OF REPORT, NOTICE, OR OTHER DATA)

December 17, 1959

Well No. **1-Lillie** is located **2310** ft. from **N** line and **2310** ft. from **E** line of sec. **10**

**NE** Str. Sec. **10** **7-16-S** **R-30-E** **N.M.P.M.**  
(1/4 Sec. and Sec. No.) (Twp.) (Range) (Meridian)  
**West Benahaw (Grayburg) Etc.** **Eddy** **New Mexico**  
(Field) (County or Subdivision) (State or Territory)

The elevation of the derrick floor above sea level is **2820** ft.

DETAILS OF WORK

(State names of and expected depths to objective sands; show sizes, weights, and lengths of proposed casings; indicate mudding jobs, cementing points, and all other important proposed work.)

Objective is to complete an oil well in the Premier Sand at a depth of approximately 2900 feet. The hole will be drilled with rotary tools. 8 5/8" surface pipe is to be set at 500 feet and cemented with 75 sacks of cement in a 9 7/8" hole. 4 1/2" casing will be set at total depth (approx. 2900') and cemented with 150 sacks of cement in a 6 3/4" hole. This cement job will cover the Queen Sand expected at 2100'. The pay zone as picked by logs and possible cores will be perforated and stimulated with mud acid and a fracture treatment.

I understand that this plan of work must receive approval in writing by the Geological Survey before operations may be commenced.

Company **The Darcy Corporation**  
**4409 West 17th Street**  
**Lubbock, Texas**  
Address \_\_\_\_\_

By **Carl A. Mueller**  
**Sec.-Treas.**  
Title \_\_\_\_\_

**NEW MEXICO OIL CONSERVATION COMMISSION**  
**WELL LOCATION AND ACREAGE DEDICATION PLAT**

FORM C-128  
 Revised 5/1/57

SEE INSTRUCTIONS FOR COMPLETING THIS FORM ON THE REVERSE SIDE

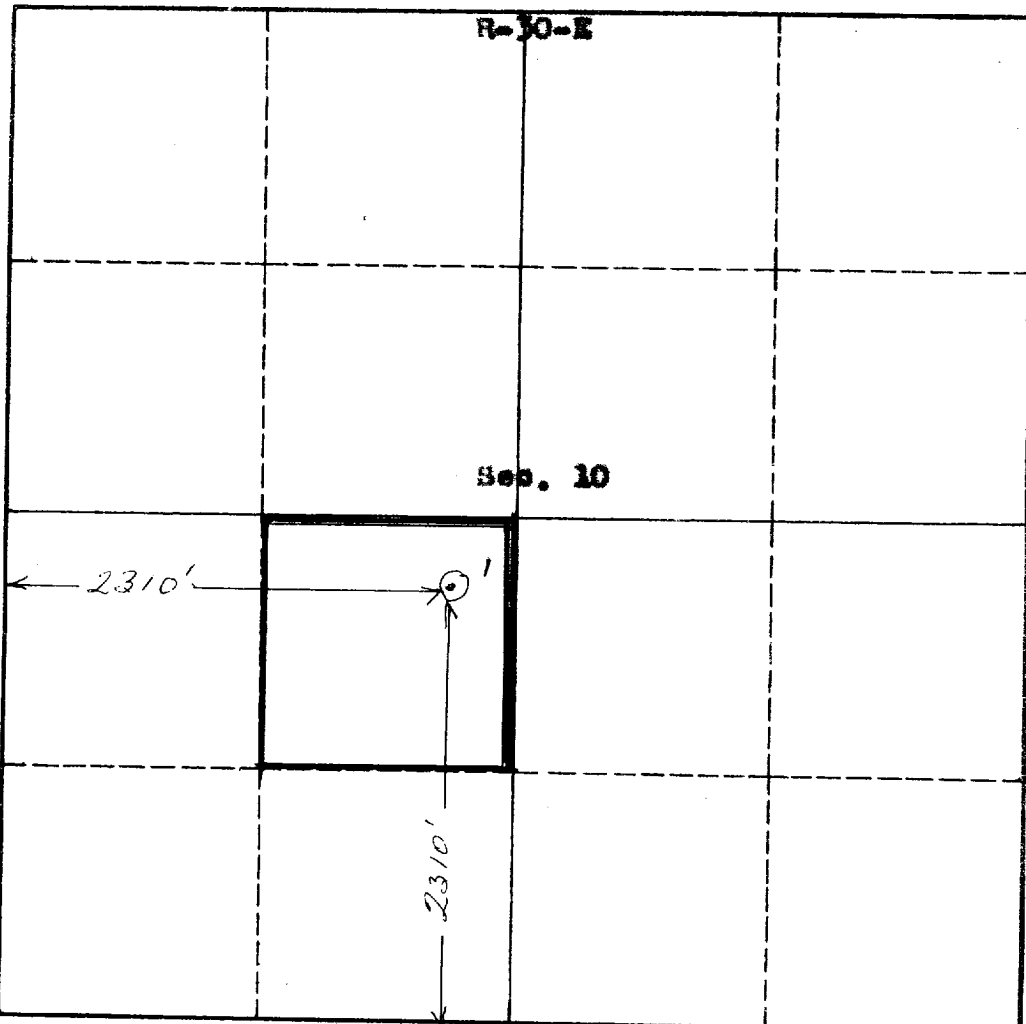
**SECTION A**

Operator <b>The Darcy Corporation</b>		Lease <b>Las Cureses 069313</b>		Well No. <b>1-11110</b>
Unit Letter <b>K</b>	Section <b>10</b>	Township <b>16S</b>	Range <b>30E</b>	County <b>Eddy</b>
Actual Footage Location of Well: <b>2310</b> feet from the <b>South</b> line and <b>2310</b> feet from the <b>West</b> line <b>Sec. 10</b>				
Ground Level Elev. <b>3830</b>	Producing Formation <b>Premier</b>	Pool <b>West Henshaw (Grayburg)</b>	Dedicated Acreage: <b>40.0</b> Acres	

1. Is the Operator the only owner in the dedicated acreage outlined on the plat below? YES ☒ NO \_\_\_\_ . ("Owner" means the person who has the right to drill into and to produce from any pool and to appropriate the production either for himself or for himself and another. (65-3-29 (e) NMSA 1935 Comp.)
2. If the answer to question one is "no," have the interests of all the owners been consolidated by communitization agreement or otherwise? YES \_\_\_\_ NO \_\_\_\_ . If answer is "yes," Type of Consolidation \_\_\_\_
3. If the answer to question two is "no," list all the owners and their respective interests below:

Owner	Land Description

**SECTION B**



**CERTIFICATION**

I hereby certify that the information in SECTION A above is true and complete to the best of my knowledge and belief.

Name <b>Carl B. Mueller</b>
Position <b>Sec.-Treas.</b>
Company <b>The Darcy Corporation</b>
Date <b>December 17, 1959</b>

I hereby certify that the well location shown on the plat in SECTION B was plotted from field notes of actual surveys made by me or under my supervision, and that the same is true and correct to the best of my knowledge and belief.

Date Surveyed <b>December 10, 1959</b>
Registered Professional Engineer and/or Land Surveyor <b>James N. Dwyer</b>
Certificate No. <b>542</b>

T  
16  
S

### INSTRUCTIONS FOR COMPLETION OF FORM C-128

1. Operator shall furnish and certify to the information called for in Section A.
2. Operator shall outline the dedicated acreage for *both* oil and gas wells on the plat in Section B.
3. A registered professional engineer or land surveyor registered in the State of New Mexico or approved by the Commission shall show on the plat the location of the well and certify this information in the space provided.
4. All distances shown on the plat must be from the outer boundaries of the Section.
5. If additional space is needed for listing owners and their respective interests as required in question 3 of Section A, please use space below.