

Form 9160-0
November 1984
(formerly 9-331C)

OCT 9 1985

UNITED STATES
DEPARTMENT OF THE INTERIOR
BUREAU OF LAND MANAGEMENT

APPLICATION FOR PERMIT TO DRILL, DEEPEN, OR PLUG BACK

ARTESIA, NM

(RE-ENTER)

b. TYPE OF WELL

OIL WELL ☒GAS WELL ☐OTHER ☐SINGLE ZONE ☐MULTIPLE ZONE ☐

2. NAME OF OPERATOR

POOL OIL CO. ✓

3. ADDRESS OF OPERATOR

P.O. Box 2837 Roswell, NM 88201

4. LOCATION OF WELL (Report location clearly and in accordance with any State requirements.)*

At surface

300' FNL & 660' FEL

At proposed prod. zone

same

14. DISTANCE IN MILES AND DIRECTION FROM NEAREST TOWN OR POST OFFICE*

Approx. 8.5 miles NW of Maljamar, NM

10. DISTANCE FROM PROPOSED*

LOCATION TO NEAREST
PROPERTY OR LEASE LINE, FT.
(Also to nearest drlg. unit line, if any)

18. DISTANCE FROM PROPOSED LOCATION*

TO NEAREST WELL, DRILLING, COMPLETED,
OR APPLIED FOR, ON THIS LEASE, FT.

16. NO. OF ACRES IN LEASE

80

19. PROPOSED DEPTH

3524

17. NO. OF ACRES ASSIGNED
TO THIS WELL

40

20. ROTARY OR CABLE TOOLS

ROT

21. ELEVATIONS (Show whether DF, RT, GR, etc.)

4071.5 GR

22. APPROX. DATE WORK WILL START*

9-1-85

23. PROPOSED CASING AND CEMENTING PROGRAM

SIZE OF HOLE	SIZE OF CASING	WEIGHT PER FOOT	SETTING DEPTH	QUANTITY OF CEMENT
*12 1/2"	8 5/8"	24#	880'	220 sx
7 7/8"	5 1/2"	15.5#	3524'	Sufficient to circ.

* (the 8 5/8" casing was left intact)

Pool Oil Co. intends to re-enter this well (formerly the MWJ, Gulf "FE" #1, plugged and abandoned 11-20-61) to old T.D. (± 3524') to evaluate the Queen and Grayburg formation.

Attachments: Survey Plat (C-102)
Supplemental Drilling Data
Surface Use Plan

Mud Program: See Exhibit D

BOP Program: A shaffer 900 double BOP will be used, (see exhibit E.)

Post ID-1
10-18-85
Re-entry

IN ABOVE SPACE DESCRIBE PROPOSED PROGRAM: If proposal is to deepen or plug back, give data on present productive zone and proposed new productive zone. If proposal is to drill or deepen directionally, give pertinent data on subsurface locations and measured and true vertical depths. Give blowout preventer program, if any.

24.

SIGNED

Fred L. Paul

TITLE Pres.

DATE

8-12-85

(This space for Federal or State office use)

PERMIT NO.

APPROVAL DATE

APPROVED BY

TITLE

DATE

CONDITIONS OF APPROVAL, IF ANY:

APPROVAL SUBJECT TO
GENERAL REQUIREMENTS AND
SPECIAL STIPULATIONS

*See Instructions On Reverse Side

**NEW MEXICO OIL CONSERVATION COMMISSION
WELL LOCATION AND ACREAGE DEDICATION PLAT**

Form C-102
Supersedes C-128
Effective 1-1-65

All distances must be from the outer boundaries of the Section.

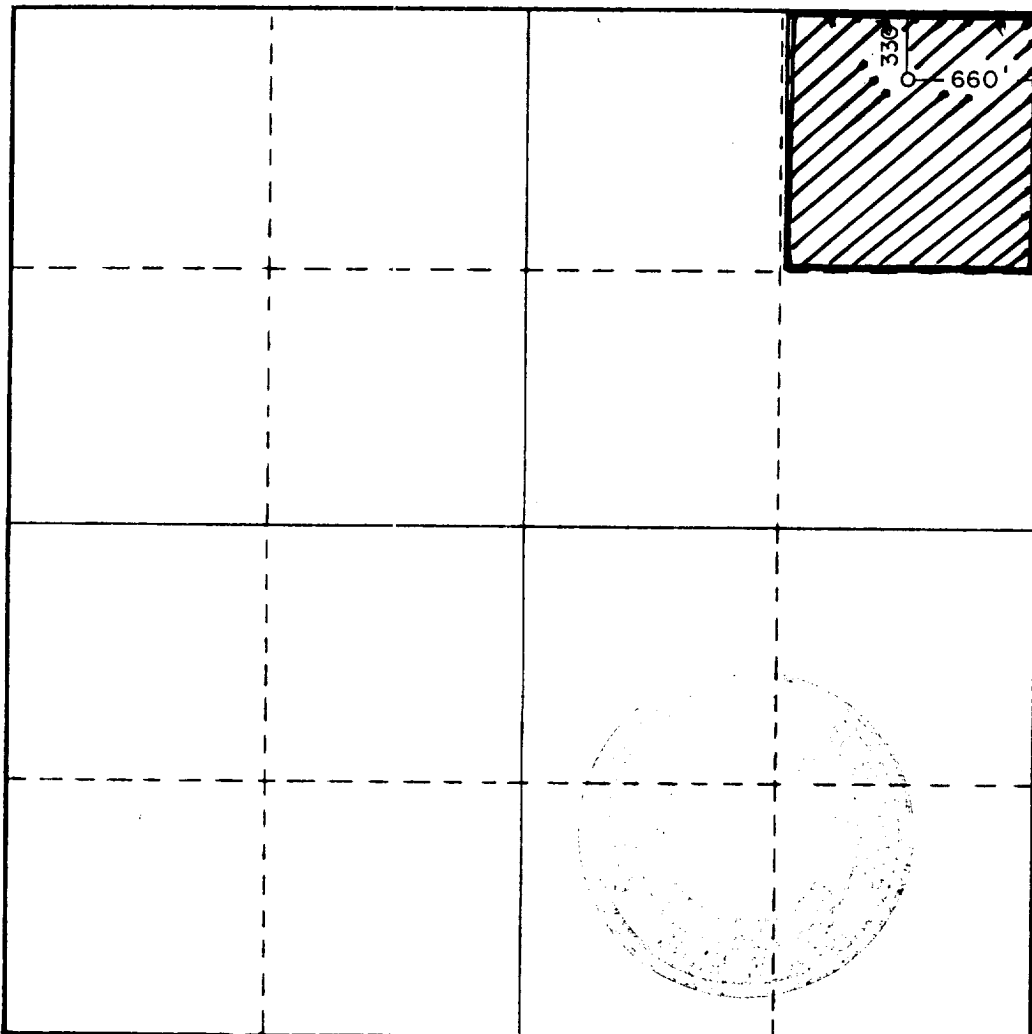
Operator POOL OIL COMPANY			Lease RONADERO 8 USA		Well No. 1
Unit Letter A	Section 8	Township 16S	Range 31E	County EDDY	
Actual Footage Location of Well:					
330		feet from the NORTH line and		660	
feet from the		feet from the		EAST line	
Ground Level Elev. 4071.5	Producing Formation GRBG/S.A.		Pool N. SO. Lake/GRBG/S.A.		Dedicated Acreage: 40 Acres

1. Outline the acreage dedicated to the subject well by colored pencil or hachure marks on the plat below.
2. If more than one lease is dedicated to the well, outline each and identify the ownership thereof (both as to working interest and royalty).
3. If more than one lease of different ownership is dedicated to the well, have the interests of all owners been consolidated by communitization, unitization, force-pooling, etc?

☐ Yes ☐ No If answer is "yes," type of consolidation _____

If answer is "no," list the owners and tract descriptions which have actually been consolidated. (Use reverse side of this form if necessary.) _____

No allowable will be assigned to the well until all interests have been consolidated (by communitization, unitization, forced-pooling, or otherwise) or until a non-standard unit, eliminating such interests, has been approved by the Commission.



CERTIFICATION

I hereby certify that the information contained herein is true and complete to the best of my knowledge and belief.

Fred F. Pool III
Name

Fred F. Pool III

Position

President

Company

Pool Oil Company

Date

8-13-85

I hereby certify that the well location shown on this plat was plotted from field notes of actual surveys made by me or under my supervision, and that the same is true and correct to the best of my knowledge and belief.

Date Surveyed

10/1/84

Registered Professional Engineer and/or Land Surveyor

John W. West

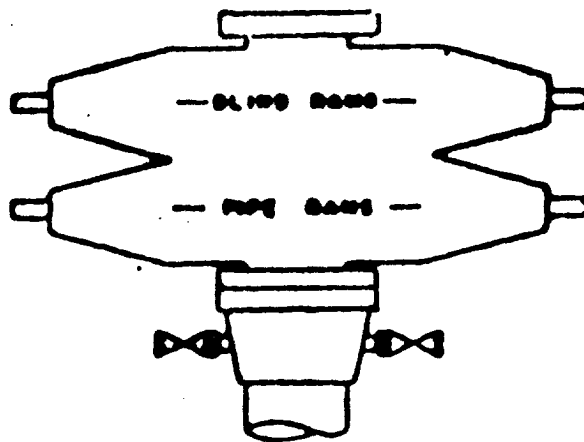
Certificate No. **JOHN W. WEST,**

616

RONALD J. EIDSON,

3239

0 330 660 990 1320 1650 1980 2310 2640 2970 3300 3630 3960 4290 4620 4950 5280 5610 5940 6270 6600



SHAFFER TYPE F
DOUBLE RAM
SERIES 900

BLOWOUT PREVENTER STACK - 3000 psi W.P.

— EXHIBIT E —
Pressure Control Equipment

SUPPLEMENTAL DRILLING DATA

Pool Oil Co.
Ronadero 8 USA #1 Well
330' FNL & 660' FEL
Section 8, T16S, R31E
Eddy County, New Mexico

In conjunction with Form 3160-3 (formerly Form 9-331C), Application for Permit to Drill subject well, Pool Oil Co. submits the following ten items of pertinent information in accordance with USGS requirements:

1. The geologic surface formation is quaternary.
2. The estimated tops of geologic markers are as follows:

Top Salt	830'
Base Salt	1890'
Yates.	1980'
Seven Rivers	2360'
Queen.	2750'
Penrose.	3100'
Premier.	3440'
San Andres	3510'

3. The anticipated depths at which anticipated water, oil, or gas bearing formations are expected to be encountered:

Oil or Gas: Queen - 2750'
Premier - 3440'

4. Proposed Casing Program: see Form 3160-3
5. Pressure Control Equipment: see Exhibit E
6. Mud Program: see Exhibit D
7. Auxiliary Equipment: master valve on BOP
8. Testing, Logging, and coring programs:

No drillstem tests are planned.
No coring is planned.
No mudlogging is planned.

Electric Log Program: Neutron Porosity Log

9. No abnormal pressures or temperatures are anticipated.
10. Anticipated Starting Date: 9-1-85

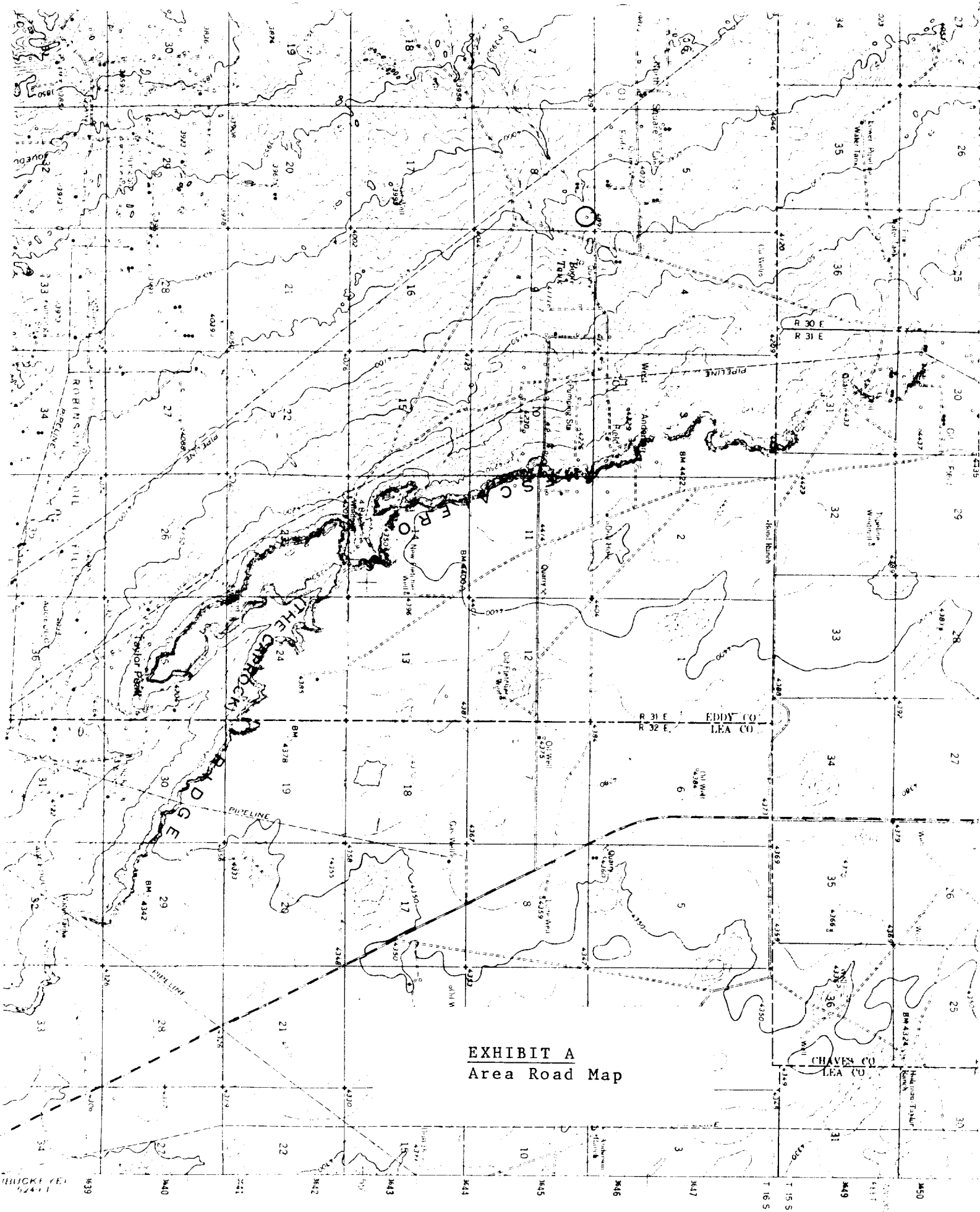
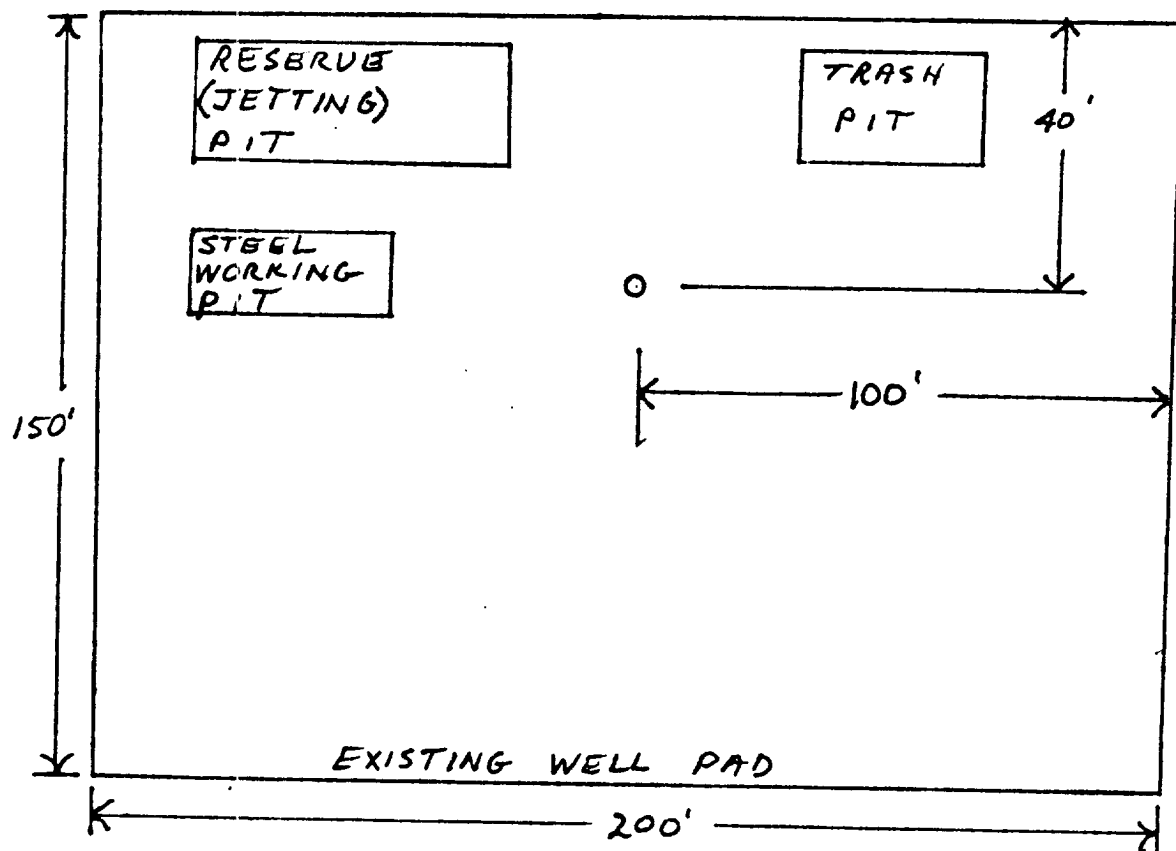


EXHIBIT A
Area Road Map



— EXHIBIT C —
Sketch of Wellsite Layout