

UNITED STATES
DEPARTMENT OF THE INTERIOR
BUREAU OF LAND MANAGEMENT

SUBMIT IN TRIPlicate*
(Other instructions on reverse side)

Form approved:
Budget Bureau No. 1004-0135
Expires August 31, 1985

5. LEASE DESIGNATION AND SERIAL NO.

NM-081381-A

6. IF INDIAN, ALLOTTEE OR TRIBE NAME

7. UNIT AGREEMENT NAME

8. FARM OR LEASE NAME

NORTHEAST SQUARE LAKE
PREMIER UNIT

9. WELL NO.

5

10. FIELD AND POOL, OR WILDCAT

SQUARE LAKE GRAYBURG
S A NORTH

11. SEC., T., R., M., OR BLK. AND
SURVEY OR AREA

3-16S-31E

12. COUNTY OR PARISH

EDDY

13. STATE

NEW MEXICO

SUNDRY NOTICES AND REPORTS ON WELLS

(Do not use this form for proposals to drill or to deepen or plug back to a different reservoir.
Use "APPLICATION FOR PERMIT—" for such proposals.)

1. OIL WELL ☐ GAS WELL ☐ OTHER ☒ INJECTION WELL RECEIVED

2. NAME OF OPERATOR

PENROC OIL CORPORATION

3. ADDRESS OF OPERATOR

P O BOX 5970, HOBBS, NM 88241

4. LOCATION OF WELL (Report location clearly and in accordance with any State requirements.*
See also space 17 below.)
At surface

Unit Letter M, 330' from the South line & 330' from the West line
of Sec 3, T16 S, R31E, Eddy County, New Mexico

14. PERMIT NO.

15. ELEVATIONS (Show whether DF, RT, GR, etc.)

4180 GR

16. Check Appropriate Box To Indicate Nature of Notice, Report, or Other Data

NOTICE OF INTENTION TO:

TEST WATER SHUT-OFF

FRACTURE TREAT

SHOOT OR ACIDIZE

REPAIR WELL

(Other)

PULL OR ALTER CASING

MULTIPLE COMPLETE

ABANDON*

CHANGE PLANS

SUBSEQUENT REPORT OF:

WATER SHUT-OFF

FRACTURE TREATMENT

SHOOTING OR ACIDIZING

(Other)

REPAIRING WELL

ALTERING CASING

ABANDONMENT*

(NOTE: Report results of multiple completion on Well
Completion or Recompletion Report and Log form.)

17. DESCRIBE PROPOSED OR COMPLETED OPERATIONS (Clearly state all pertinent details, and give pertinent dates, including estimated date of starting any proposed work. If well is directionally drilled, give subsurface locations and measured and true vertical depths for all markers and zones pertinent to this work.)*

Rigged up well service unit August 14, 1989. Pulled tubing & packer. Found pin
hole on bottom joint. SDFN.
August 15, 1989, ran new packer and tubing. Packer at 3591' (114 jts.),
circulated hole with treated water. Set packer and pressure to 500#. Test
witnessed by NMOCD (Adam). Clean up location and rigged down.

18. I hereby certify that the foregoing is true and correct

SIGNED

TITLE

PRESIDENT

DATE

August 19, 1989

(This space for Federal or State office use)

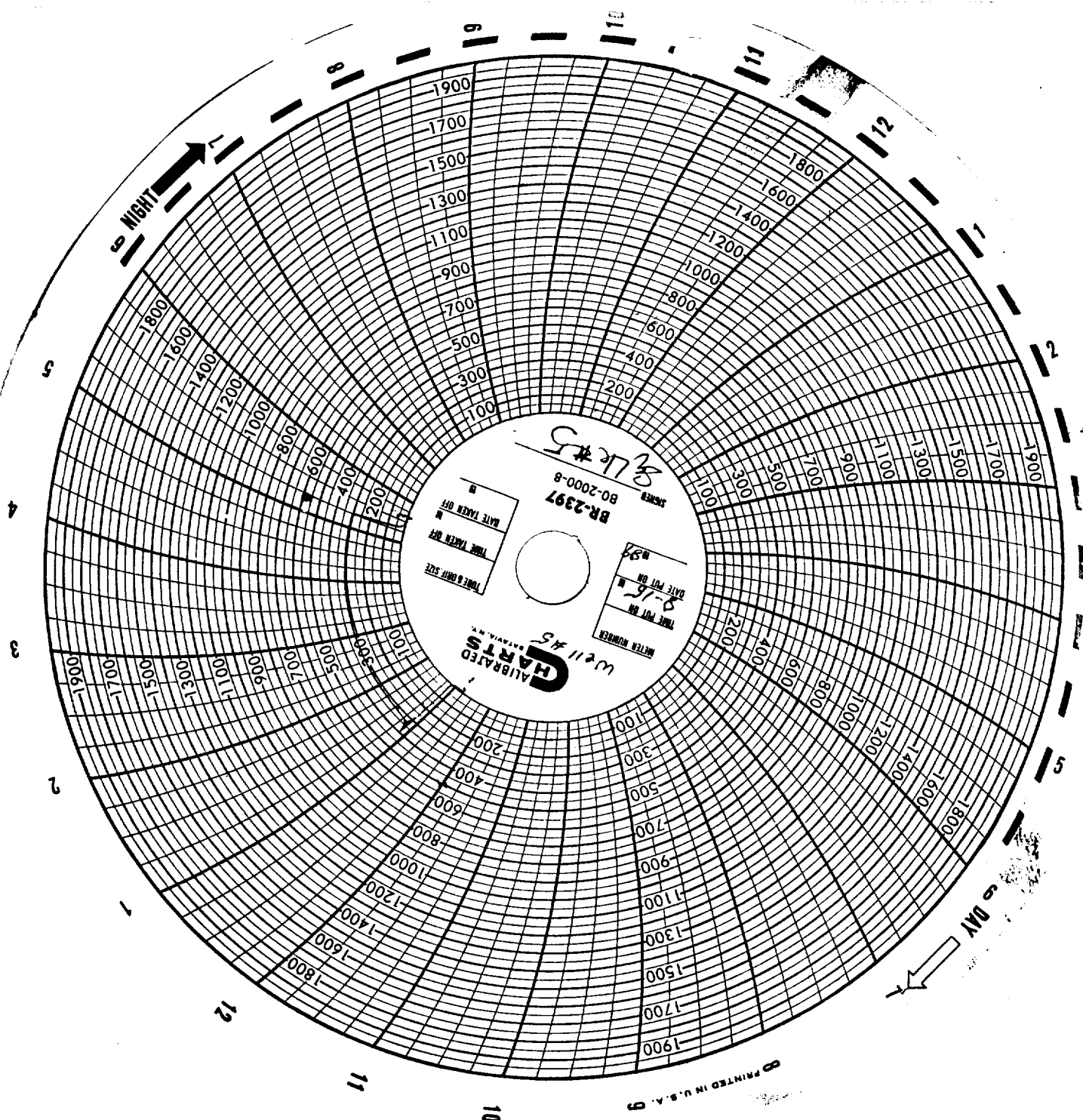
APPROVED BY

TITLE

DATE

CONDITIONS OF APPROVAL, IF ANY:

*See Instructions on Reverse Side



W. H. #5
CALIBRATED CHARTS
W. H. #5
DATE TAKEN ON
TIME TAKEN ON
DATE TAKEN OFF
TIME TAKEN OFF
BR-2397
80-2000-8

PRINTED IN U.S.A. 9