

NUMBER OF COPIES RECEIVED	
DISTRIBUTION	
SANTA FE	
FILE	
U.S.G.S.	
LAND OFFICE	
TRANSPORTER	OIL GAS
PRODUCTION OFFICE	
OPERATOR	

FORM C-128
Revised 5/1/57

NEW MEXICO OIL CONSERVATION COMMISSION **WELL LOCATION AND ACREAGE DEDICATION PLAT** **SEE INSTRUCTIONS FOR COMPLETING THIS FORM ON THE REVERSE SIDE**

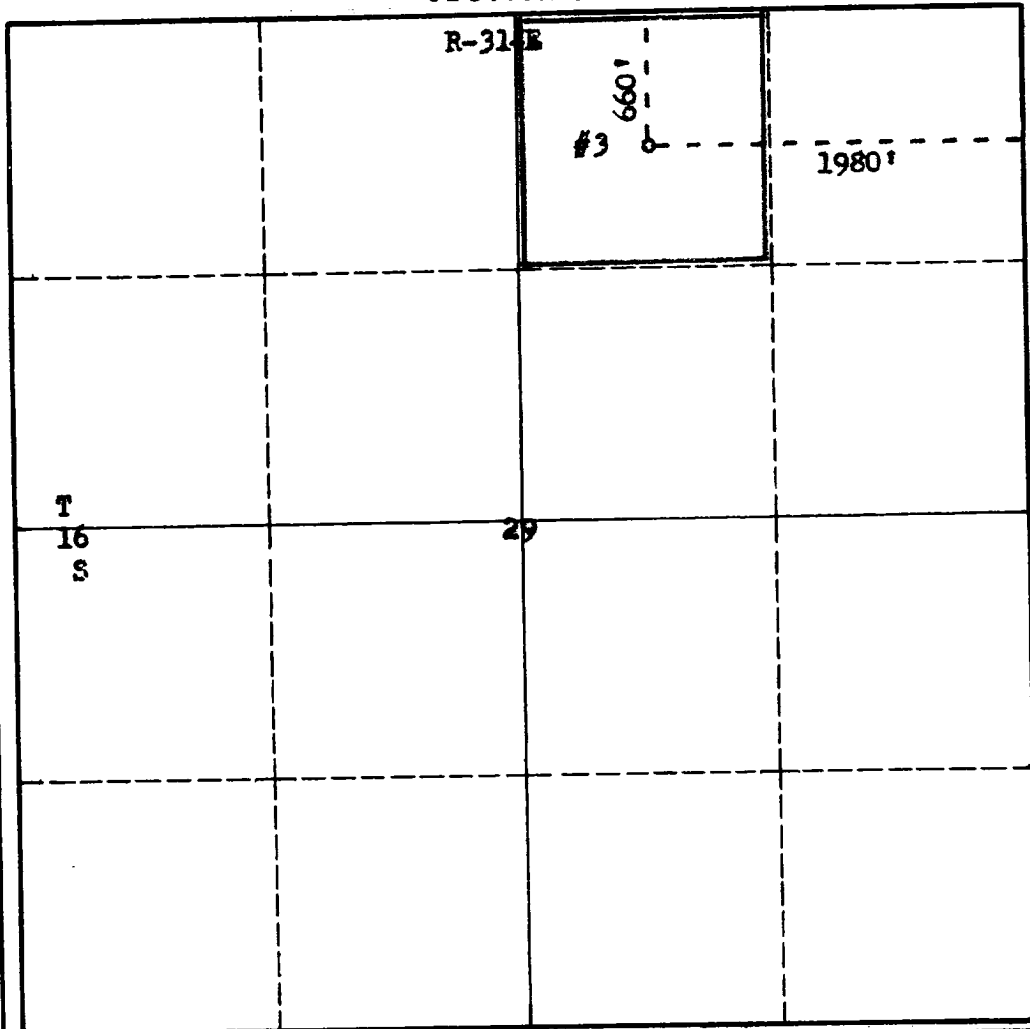
SECTION A

Operator Newmont Oil Company		Lease Fidel		Well No. 3
Unit Letter B	Section 29	Township T-16-S	Range R-31-E	County Eddy
Actual Footage Location of Well: 660 feet from the North line and 1980 feet from the East line				
Ground Level Elev. 3953 L&S	Producing Formation Grayburg-San Andres		Pool Square Lake Pool	Dedicated Acreage: 40 Acres

1. Is the Operator the only owner in the dedicated acreage outlined on the plat below? YES ☒ NO ☐ ("Owner" means the person who has the right to drill into and to produce from any pool and to appropriate the production either for himself or for himself and another. (65-3-29 (e) NMSA 1935 Comp.)
2. If the answer to question one is "no," have the interests of all the owners been consolidated by communitization agreement or otherwise? YES ☐ NO ☐ . If answer is "yes," Type of Consolidation _____
3. If the answer to question two is "no," list all the owners and their respective interests below:

Owner	Land Description

SECTION B



CERTIFICATION

I hereby certify that the information in SECTION A above is true and complete to the best of my knowledge and belief.

Name *Armon Dellet*
 Position **Superintendent**
 Company **Newmont Oil Company**
 Date **January 30, 1962**

I hereby certify that the well location shown on the plat in SECTION B was plotted from field notes of actual surveys made by me or under my supervision, and that the same is true and correct to the best of my knowledge and belief.

Date Surveyed
January 26, 1962
 Registered Professional Engineer
 and/or Land Surveyor

Certificate No.

3280

INSTRUCTIONS FOR COMPLETION OF FORM C-128

1. Operator shall furnish and certify to the information called for in Section A.
2. Operator shall outline the dedicated acreage for *both* oil and gas wells on the plat in Section B.
3. A registered professional engineer or land surveyor registered in the State of New Mexico or approved by the Commission shall show on the plat the location of the well and certify this information in the space provided.
4. All distances shown on the plat must be from the outer boundaries of the Section.
5. If additional space is needed for listing owners and their respective interests as required in question 3 of Section A, please use space below.