

NEW MEXICO OIL CONSERVATION COMMISSION
Santa Fe, New Mexico

Form G-101
Revised (12/1/59)

NOTICE OF INTENTION TO DRILL

SEP 10 1959

Notice must be given to the District Office of the Oil Conservation Commission and approval obtained before drilling or recompletion begins. If changes in the proposed plan are considered advisable, a copy of this notice showing such changes will be returned to the sender. Submit this notice in QUINTUPLICATE. One copy will be returned following approval. See additional instructions in Rules and Regulations of the Commission. If State Land submit 6 Copies Attach Form G-128 in triplicate to first 3 copies of form G-101

Artesia, New Mexico

(Place)

September 10, 1959

(Date)

OIL CONSERVATION COMMISSION
SANTA FE, NEW MEXICO

Gentlemen:

You are hereby notified that it is our intention to commence the Drilling of a well to be known as

Newmont Oil Company

(Company or Operator)

State R

(Lease)

Well No. 4

F

(Unit)

located 1930 feet from the West line and 1960 feet from the North

line of Section 32, T. 16S, R. 31E, NMPM.

(GIVE LOCATION FROM SECTION LINE)

Square Lake

Pool,

Eddy

County

If State Land the Oil and Gas Lease is No. B-2721

If patented land the owner is

Address

We propose to drill well with drilling equipment as follows: Reopen old well with cable tools to 3547.

The status of plugging bond is Blanket Bond in effect

Drilling Contractor Kennedy Oil Company

Room 204 Becker Building

Artesia, New Mexico

We intend to complete this well in the Grayburg - San Andres

formation at an approximate depth of 3547 feet.

CASING PROGRAM

We propose to use the following strings of Casing and to cement them as indicated:

Size of Hole	Size of Casing	Weight per Foot	New or Second Hand	Depth	Sacks Cement
10"	7	20	Second Hand	300'	
5	4 1/2	9.5	New	3540'	100

If changes in the above plans become advisable we will notify you immediately.

ADDITIONAL INFORMATION (If recompletion give full details of proposed plan of work.) Reopen and set 7" casing in the top of old 8 5/8" surface casing which was set at 598' and cemented with 50 sacks of cement. (Part of the 8 5/8 has been pulled.) Set 4 1/2" at approximately 3540 and cement with 100 sacks. (5 1/2" casing was set at 3209 and cemented with 100 sacks and later part was pulled.)

SEP 10 1959

Approved....., 19.....
Except as follows:

Sincerely yours,

Newmont Oil Company

(Company or Operator)

By: Herman J. Ledbetter

Position: Superintendent

Send Communications regarding well to

Name: Newmont Oil Company

Address: Becker Building, Artesia, New Mexico

OIL CONSERVATION COMMISSION

By: M. L. Armstrong

OIL AND GAS INSPECTOR

NEW MEXICO OIL CONSERVATION COMMISSION
WELL LOCATION AND ACREAGE DEDICATION PLAT

FORM C-128
Revised 5/1/57

RECEIVED
SEPT 6 1959

SEE INSTRUCTIONS FOR COMPLETING THIS FORM ON THE REVERSE SIDE

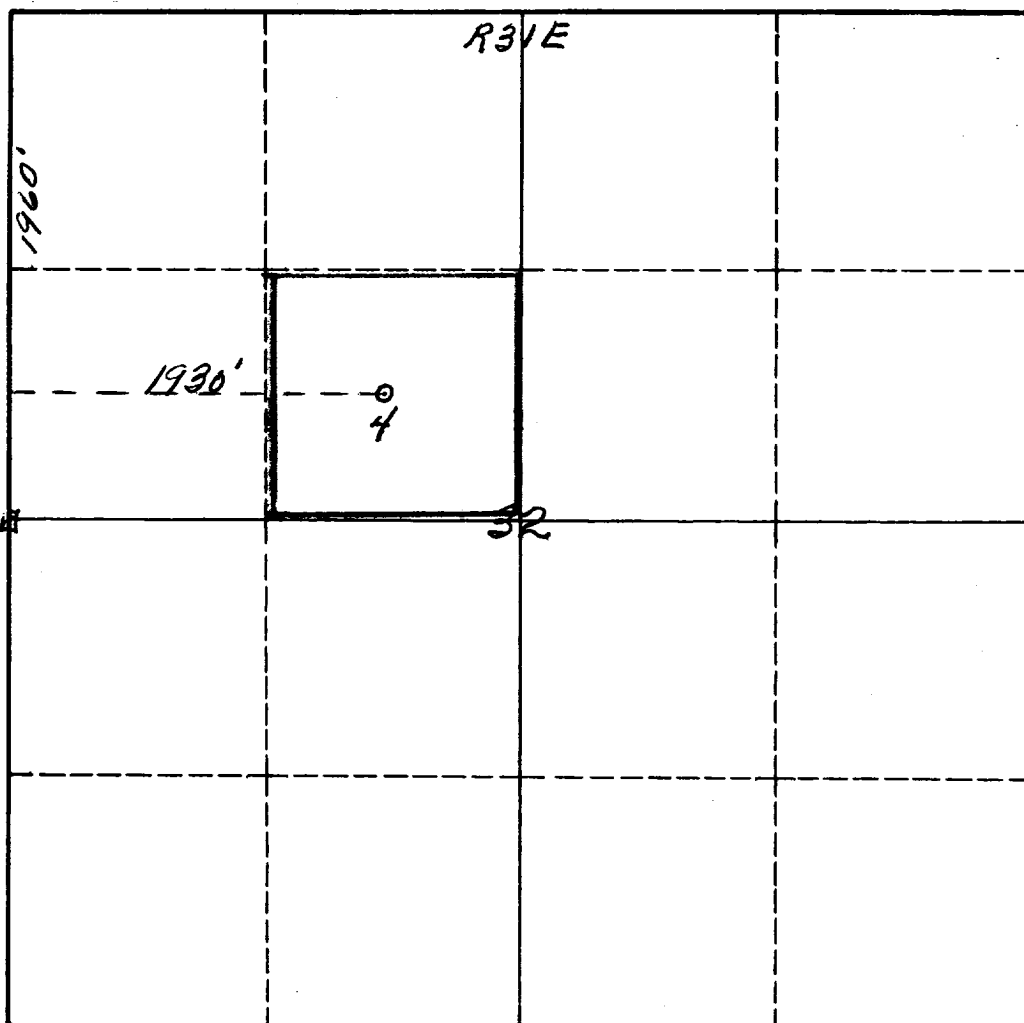
SECTION A

Operator Newmont Oil Company			Lease State R			Well No. 4
Unit Letter F	Section 32	Township 16S	Range 31E	County Eddy		
Actual Footage Location of Well: 1930 feet from the West line and 1960 feet from the North line						
Ground Level Elev.	Producing Formation Grayburg - San Andres		Pool Square Lake	Dedicated Acreage: 40 Acres		

1. Is the Operator the only owner in the dedicated acreage outlined on the plat below? YES ☒ NO ____ . ("Owner" means the person who has the right to drill into and to produce from any pool and to appropriate the production either for himself or for himself and another. (65-3-29 (e) NMSA 1935 Comp.)
2. If the answer to question one is "no," have the interests of all the owners been consolidated by communitization agreement or otherwise? YES ____ NO ____ . If answer is "yes," Type of Consolidation ____
3. If the answer to question two is "no," list all the owners and their respective interests below:

Owner	Land Description

SECTION B



CERTIFICATION

I hereby certify that the information in SECTION A above is true and complete to the best of my knowledge and belief.

Name **Harmon J. Ledbetter**
Position **Superintendent**
Company **Newmont Oil Company**
Date **September 10, 1959**

I hereby certify that the well location shown on the plat in SECTION B was plotted from field notes of actual surveys made by me or under my supervision, and that the same is true and correct to the best of my knowledge and belief.

Date Surveyed **July 25, 1959**
Registered Professional Engineer
and/or Land Surveyor

James H. Brown
Certificate No. **542**

0 330 660 990 1320 1650 1980 2310 2640 2000 1500 1000 500 0

INSTRUCTIONS FOR COMPLETION OF FORM C-128

1. Operator shall furnish and certify to the information called for in Section A.
2. Operator shall outline the dedicated acreage for *both* oil and gas wells on the plat in Section B.
3. A registered professional engineer or land surveyor registered in the State of New Mexico or approved by the Commission shall show on the plat the location of the well and certify this information in the space provided.
4. All distances shown on the plat must be from the outer boundaries of the Section.
5. If additional space is needed for listing owners and their respective interests as required in question 3 of Section A, please use space below.

OIL CONSERVATION COMMISSION		
ADMINISTRATIVE OFFICE		
No. Copies Received		
CHIEF, BUREAU	1	
EXECUTIVE SECRETARY	1	
EXECUTIVE ASSISTANT		
STATE LAND OFFICE	1	
U. S. G. S.	2	
TRANSPORTATION	1	✓
THE		
U. S. DEPT. OF MINES		