

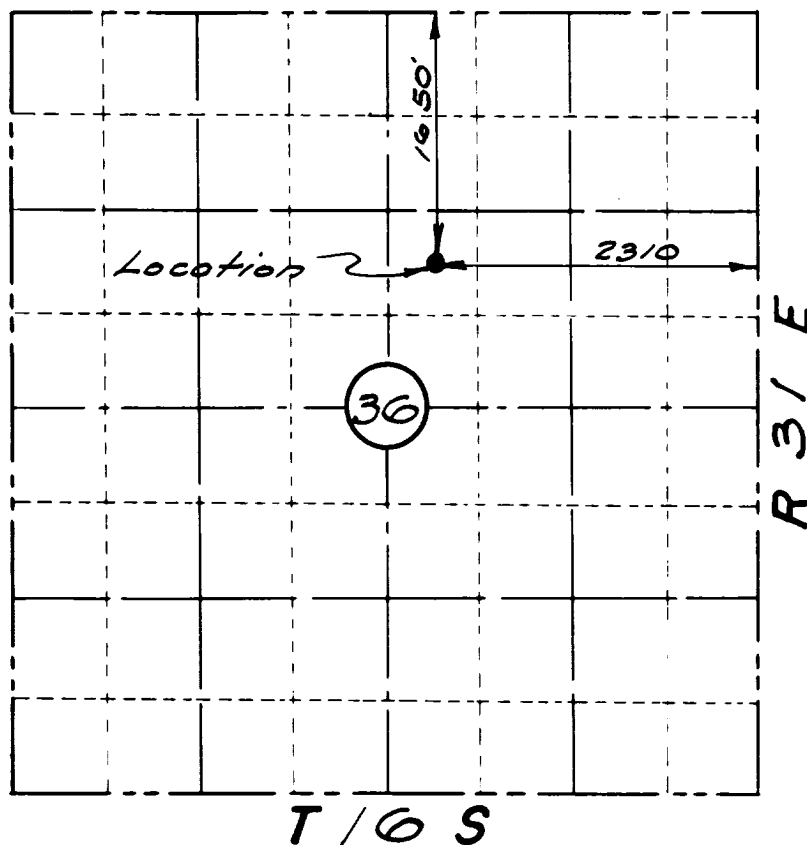
# LOCATION FOR

R. L. HARRISON  
LEONARD NO "3"

OIL COMM. COMM.  
ARTESIA OFFICE

1650 FEET FROM NORTH LINE  
FEET FROM SOUTH LINE  
2310 FEET FROM EAST LINE  
FEET FROM WEST LINE

NW 1/4 - SW 1/4 - NE 1/4 - Sec. 36 - T16S - R31E



## CERTIFICATE

I, Clarence E. Fischbeck, Registered Professional Engineer of the State of New Mexico, hereby certify that I made the location as platted and that said plat is a true & correct representation of the field notes of the actual survey & is true and correct to the best of my knowledge & belief.

Clarence E. Fischbeck  
Clarence E. Fischbeck — Consulting Engineer  
Artesia, New Mexico.