

NUMBER OF COPIES RECEIVED		6
DISTRIBUTION		
SANTA FE		✓
FILE		✓
U.S.G.S.		✓
LAND OFFICE		✓
TRANSPORTER	OIL	
	GAS	
PRODUCTION OFFICE		
OPERATOR		

NEW MEXICO OIL CONSERVATION COMMISSION
Santa Fe, New Mexico

NOTICE OF INTENTION TO DRILL

RECEIVED
 Form C-101
 Revised (12/1/55)
 JAN 31 1961
 30-015-105934
 2-125

Notice must be given to the District Office of the Oil Conservation Commission and approval obtained before drilling or recompletion begins. If changes in the proposed plan are considered advisable, a copy of this notice showing such changes will be returned to the sender. Submit this notice in **QUINTUPLICATE**. One copy will be returned following approval. See additional instructions in Rules and Regulations of the Commission. If State Land submit 6 Copies Attach Form C-128 in triplicate to first 3 copies of form C-101

Artesia, New Mexico

1-26-61

(Place)

(Date)

OIL CONSERVATION COMMISSION
 SANTA FE, NEW MEXICO

Gentlemen:

You are hereby notified that it is our intention to commence the Drilling of a well to be known as

Martin Yates, III

(Company or Operator)

Dooley-State, Abo

(Lease)

Well No. **2**, in **J** (Unit) The well is

located **1650** feet from the **South** line and **1650** feet from the

East line of Section **36**, T. **17 S**, R. **27 E**, NMPM.

(GIVE LOCATION FROM SECTION LINE) **Empire-Abo** Pool, **Eddy** County

If State Land the Oil and Gas Lease is No. **B-752**

If patented land the owner is

Address

We propose to drill well with drilling equipment as follows: **Rotary**

The status of plugging bond is **Blanket Bond**

Drilling Contractor **Yates Drilling Co.**

309 Carper Bldg.,

Artesia, New Mexico.

We intend to complete this well in the **Abo Reef**

formation at an approximate depth of **6000** feet.

CASING PROGRAM

We propose to use the following strings of Casing and to cement them as indicated:

Size of Hole	Size of Casing	Weight per Foot	New or Second Hand	Depth	Sacks Cement
11"	8 5/8"	24#	New	1000'	Circulate
7 7/8"	5 1/2"	15.5#	New	6000"	750

If changes in the above plans become advisable we will notify you immediately.

ADDITIONAL INFORMATION (If recompletion give full details of proposed plan of work.)

Approved JAN 31 1961, 19

Except as follows:

Sincerely yours,

Martin Yates, III

(Company or Operator)

By R. W. Landenberger, Jr.

Position **Company Geologist**

Send Communications regarding well to

Name **R. W. Landenberger, Jr.**

Address **309 Carper Bldg., Artesia, N. Mex.**

OIL CONSERVATION COMMISSION

By M. L. Cranstony

OIL AND GAS INSPECTOR

NUMBER OF COPIES RECEIVED	
DISTRIBUTION	
SANTA FE	
FILE	
U.S.G.S.	
LAND OFFICE	
TRANSPORTER	OIL GAS
PRORATION OFFICE	
OPERATOR	

NEW MEXICO OIL CONSERVATION COMMISSION
WELL LOCATION AND ACREAGE DEDICATION PLAT
 SEE INSTRUCTIONS FOR COMPLETING THIS FORM ON THE REVERSE SIDE

FORM C-128
 Revised 1/57

RECEIVED
 JAN 31 1961
 D.C.C.
 ARTESIA, OFFICE

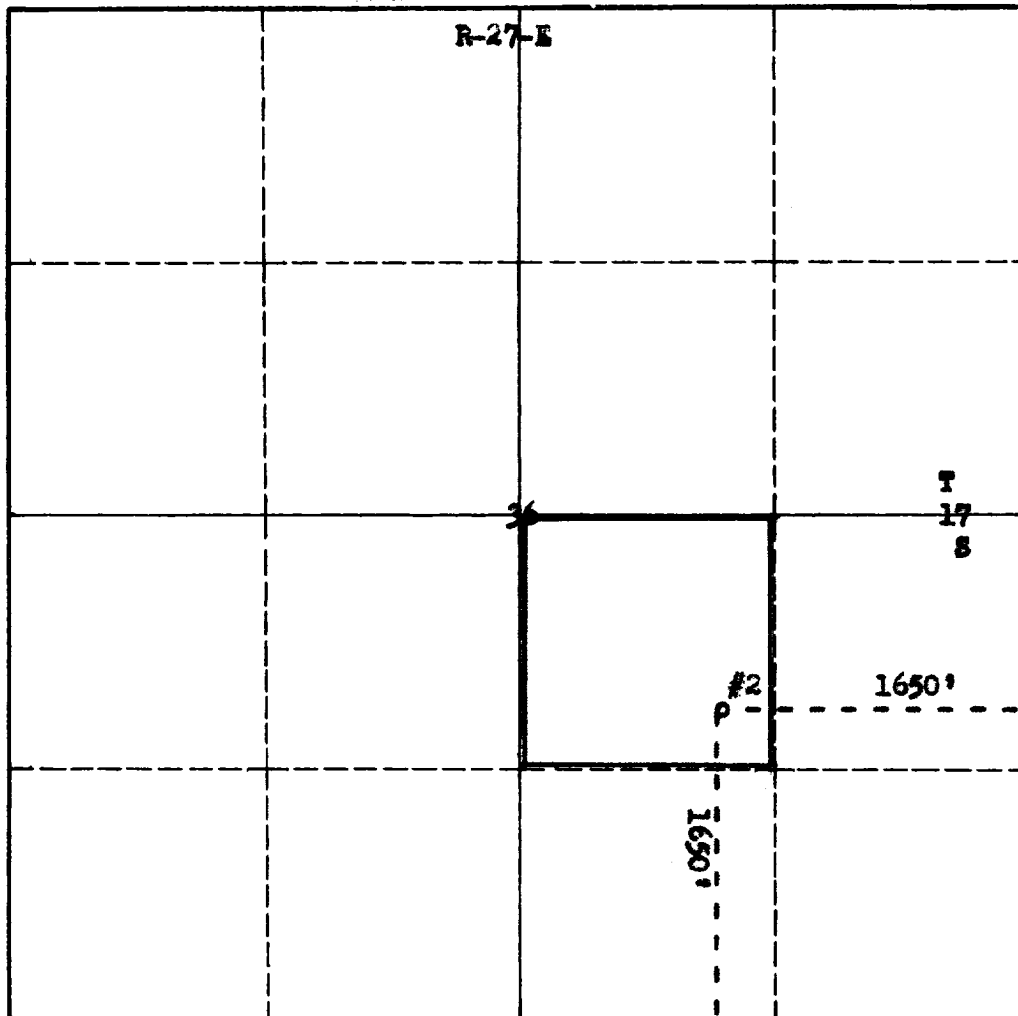
SECTION A

Operator Martin Yates III		Lease State - Dealey		Well No. 2
Unit Letter J	Section 36	Township T-17-S	Range R-27-E	County Eddy
Actual Footage Location of Well: 1650 feet from the South line and 1650 feet from the East line				
Ground Level Elev. 3643	Producing Formation	Pool	Dedicated Acreage: 40 Acres	

1. Is the Operator the only owner in the dedicated acreage outlined on the plat below? YES _____ NO _____. ("Owner" means the person who has the right to drill into and to produce from any pool and to appropriate the production either for himself or for himself and another. (65-3-29 (e) NMSA 1935 Comp.)
2. If the answer to question one is "no," have the interests of all the owners been consolidated by communitization agreement or otherwise? YES _____ NO _____. If answer is "yes," Type of Consolidation _____
3. If the answer to question two is "no," list all the owners and their respective interests below:

Owner	Land Description

SECTION B



CERTIFICATION

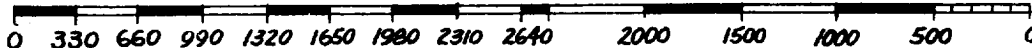
I hereby certify that the information in SECTION A above is true and complete to the best of my knowledge and belief.

Name R.W. Landenberger, Jr.
 Position **Geologist**
 Company **Yates Petr. Corp.**
 Date **1/30/61**

I hereby certify that the well location shown on the plat in SECTION B was plotted from field notes of actual surveys made by me or under my supervision, and that the same is true and correct to the best of my knowledge and belief.

Date Surveyed **1-25-61**
 Registered Professional Engineer and/or Land Surveyor

[Signature]
 Certificate No. **3280**



INSTRUCTIONS FOR COMPLETION OF FORM C-128

1. Operator shall furnish and certify to the information called for in Section A.
2. Operator shall outline the dedicated acreage for *both* oil and gas wells on the plat in Section B.
3. A registered professional engineer or land surveyor registered in the State of New Mexico or approved by the Commission shall show on the plat the location of the well and certify this information in the space provided.
4. All distances shown on the plat must be from the outer boundaries of the Section.
5. If additional space is needed for listing owners and their respective interests as required in question 3 of Section A, please use space below.