

NEW MEXICO
OIL CONSERVATION COMMISSION

Form C-128

Well Location and/or Gas Proration Plat

Date Oct. 10, 1956

Operator Humble Oil & Refining Co Lease Chalk Bluff Draw Unit

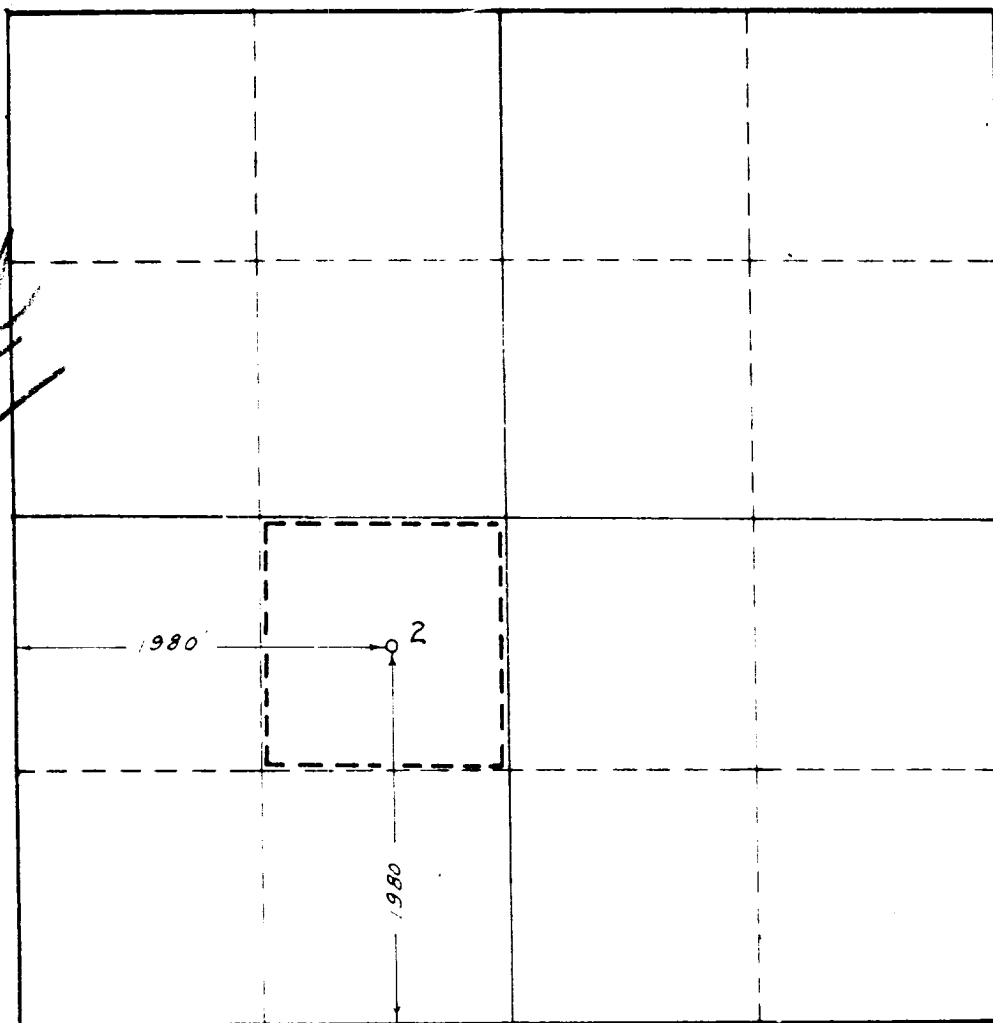
Well No. 2 Section 32 Township 17-South Range 27-East NMPM

Located 1980 Feet From South Line, 1980 Feet From West Line,

Eddy County, New Mexico. G. L. Elevation _____

Name of Producing Formation Bend Sand
Pennsylvanian Pool Chalk Bluff Draw Dedicated Acreage 40

(Note: All distances must be from outer boundaries of Section)



SCALE: 1"=1000'

1. Is this Well a Dual Comp.? Yes No.
2. If the answer to Question 1 is yes, are there any other dually completed wells within the dedicated acreage? Yes No.

This is to certify that the above plat was prepared from field notes of actual surveys made by me or under my supervision and that the same are true and correct to the best of my knowledge and belief.

Name J. H. [unclear]
Position Asst. Division Superintendent
Representing Humble Oil & Ref. Company
Address Box 1600 Midland, Texas

Date Surveyed 10-8-56
Registered Professional Engineer and/or
Land Surveyor