

NUMBER OF COPIES RECEIVED		6
DISTRIBUTION		
SANTA FE		
FILE		
U.S.G.S.		
LAND OFFICE		
TRANSPORTER	OIL	
	GAS	
PRODUCTION OFFICE		
OPERATOR		

# NEW MEXICO OIL CONSERVATION COMMISSION

FORM C-103  
(Rev 3-55)

## MISCELLANEOUS REPORTS ON WELLS

(Submit to appropriate District Office as per Commission Rule 1106)

Name of Company <b>MCCOY &amp; STEVENS</b>				Address <b>606 Security Nat'l Bnk. Bldg., N. Mex.</b>				Roswell,	
Lease <b>Superior-State</b>		Well No. <b>1</b>	Unit Letter <b>G</b>	Section <b>11</b>	Township <b>17S</b>	Range <b>28E</b>			
Date Work Performed <b>5-10-63</b>		Pool <b>Undesignated</b>				County <b>Eddy</b>			

THIS IS A REPORT OF: (Check appropriate block)

- ☒ Beginning Drilling Operations
 ☐ Casing Test and Cement Job
 ☐ Other (Explain):  
☐ Plugging
 ☐ Remedial Work

Detailed account of work done, nature and quantity of materials used, and results obtained.

Well spudded 1:30 p.m. May 10, 1963.

RECEIVED

MAY 16 1963

D. B. D.  
ARTS & CRAFTS OFFICE

Witnessed by <b>James Monroe</b>	Position <b>Supt.</b>	Company <b>Harvey Yates Drilling Co.</b>
-------------------------------------	--------------------------	---------------------------------------------

FILL IN BELOW FOR REMEDIAL WORK REPORTS ONLY

### ORIGINAL WELL DATA

D F Elev.	T D	P B T D	Producing Interval	Completion Date
Tubing Diameter	Tubing Depth	Oil String Diameter	Oil String Depth	
Perforated Interval(s)				
Open Hole Interval		Producing Formation(s)		

### RESULTS OF WORKOVER

Test	Date of Test	Oil Production BPD	Gas Production MCFPD	Water Production BPD	GOR Cubic feet/Bbl	Gas Well Potential MCFPD
Before Workover						
After Workover						

OIL CONSERVATION COMMISSION

I hereby certify that the information given above is true and complete to the best of my knowledge.

Approved by <i>M. L. Armstrong</i>	Name <i>W. B. McCoy</i>
Title <b>OIL AND GAS INSPECTOR</b>	Position <b>Partner</b>
Date <b>MAY 16 1963</b>	Company <b>MCCOY AND STEVENS</b>

NUMBER OF COPIES RECEIVED		6
DISTRIBUTION		
SANTA FE	FILE	1
U.S.G.S.	LAND OFFICE	2
TRANSPORTER	OIL	
	GAS	
PRODUCTION OFFICE		
OPERATOR		

**NEW MEXICO OIL CONSERVATION COMMISSION**  
**Santa Fe, New Mexico**

Form G-101  
Revised (12/1/55)

## NOTICE OF INTENTION TO DRILL

Notice must be given to the District Office of the Oil Conservation Commission and approval obtained before drilling or recompletion begins. If changes in the proposed plan are considered advisable, a copy of this notice showing such changes will be returned to the sender. Submit this notice in **QUINTUPLICATE**. One copy will be returned following approval. See additional instructions in Rules and Regulations of the Commission. **If State Land submit 6 Copies Attach Form G- 128 in triplicate to first 3 copies of form G-101**

**Roswell, New Mexico**

(Place)

**May 3, 1963**  
(Date) **RECEIVED**

**OIL CONSERVATION COMMISSION**  
**SANTA FE, NEW MEXICO**

Gentlemen:

You are hereby notified that it is our intention to commence the Drilling of a well to be known as  
**McCoy & Stevens**

(Company or Operator)

**Superior-State**

(Lease)

Well No. **1**, in **G** (Unit) The well is

located **1660** feet from the **North** line and **1638** feet from the

**East** line of Section **11**, T. **17S**, R. **28E**, NMPM.

(GIVE LOCATION FROM SECTION LINE) **Undesignated** Pool, **Eddy** County

**E-7254**

If State Land the Oil and Gas Lease is No. **----**

If patented land the owner is **----**

Address **----**

We propose to drill well with drilling equipment as follows: **Cable Tools**

The status of plugging bond is **Blanket Bond**

Drilling Contractor **Harvey Yates Drilling Co.**  
**320 Carper Bldg.**

**Artesia**

We intend to complete this well in the **Penrose** formation at an approximate depth of **1700** feet.

### CASING PROGRAM

We propose to use the following strings of Casing and to cement them as indicated:

Size of Hole	Size of Casing	Weight per Foot	New or Second Hand	Depth	Sacks Cement
<b>13</b>	<b>10"</b>	<b>4</b>	<b>SH</b>	<b>175</b>	<b>SET</b>
<b>11</b>	<b>8 5/8</b>	<b>24</b>	<b>SH</b>	<b>300</b>	<b>50</b>
<b>7 7/8</b>	<b>5 1/2</b>	<b>14</b>	<b>NEW</b>	<b>1700</b>	<b>75</b>

If changes in the above plans become advisable we will notify you immediately.

**ADDITIONAL INFORMATION** (If recompletion give full details of proposed plan of work.)

Approved **MAY 10 1963**, 19\_\_\_\_\_  
Except as follows:

**OIL CONSERVATION COMMISSION**

By **ML Armstrong**

Sincerely yours,

**McCoy & Stevens**

(Company or Operator)

By **John A. Markis Jr**

Position **Agent**

Send Communications regarding well to

**McCoy & Stevens**

Name **606 Security Nat'l Bank Bldg.**  
Address **Roswell, New Mexico**

NUMBER OF COPIES RECEIVED	
DISTRIBUTION	
SANTA FE	
FILE	
U.S.G.S.	
LAND OFFICE	
TRANSPORTER	OIL GAS
PRODUCTION OFFICE	
OPERATOR	

**NEW MEXICO OIL CONSERVATION COMMISSION**  
**WELL LOCATION AND ACREAGE DEDICATION PLAT**  
 SEE INSTRUCTIONS FOR COMPLETING THIS FORM ON THE REVERSE SIDE

FORM C-128  
 Revised 5/1/57

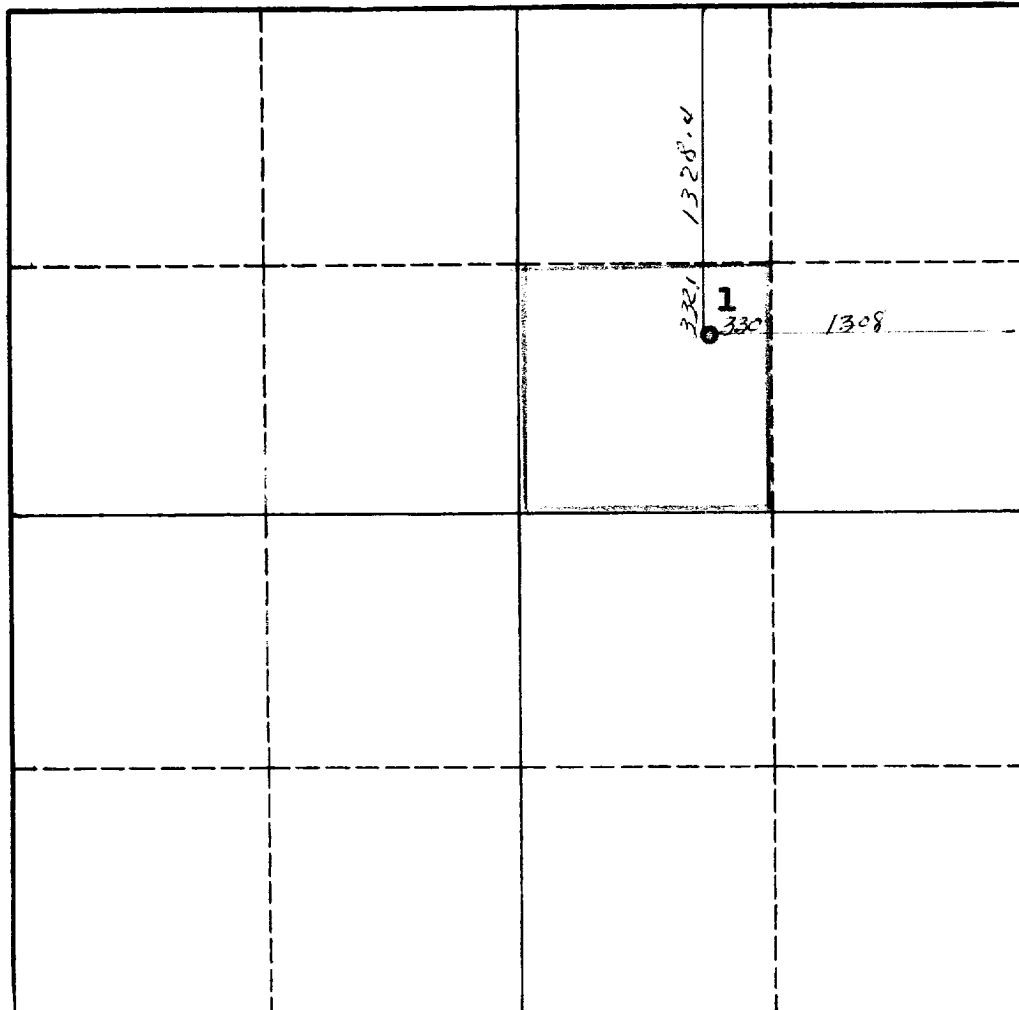
**SECTION A**

Operator <b>McCoy &amp; Stevens</b>		Lease <b>Superior</b>		Well No. <b>1</b>
Unit Letter	Section <b>11</b>	Township <b>17 South</b>	Range <b>28 East</b>	County <b>Eddy</b>
Actual Footage Location of Well: <b>1660</b> feet from the <b>North</b> line and <b>1638</b> feet from the <b>East</b> line				
Ground Level Elev. <b>3610</b>	Producing Formation <b>Penrose</b>	Pool <b>Undesignated</b>	Dedicated Acreage: <b>40</b> Acres	

1. Is the Operator the only owner in the dedicated acreage outlined on the plat below? YES ☒ NO ☐ . ("Owner" means the person who has the right to drill into and to produce from any pool and to appropriate the production either for himself or for himself and another. (65-3-29 (e) NMSA 1935 Comp.)
2. If the answer to question one is "no," have the interests of all the owners been consolidated by communitization agreement or otherwise? YES ☐ NO ☐ . If answer is "yes," Type of Consolidation \_\_\_\_\_
3. If the answer to question two is "no," list all the owners and their respective interests below:

Owner	Land Description

**SECTION B**



**CERTIFICATION**

I hereby certify that the information in SECTION A above is true and complete to the best of my knowledge and belief.

Name <i>John A. Mathis Jr.</i>
Position <b>Agent</b>
Company <b>McCoy &amp; Stevens</b>
Date <b>May 3, 1963</b>

I hereby certify that the well location shown on the plat in SECTION B was plotted from field notes of actual surveys made by me or under my supervision, and that the same is true and correct to the best of my knowledge and belief.

Date Surveyed <b>May 2, 1963</b>
Registered Professional Engineer and/or Land Surveyor <i>John A. Mathis Jr.</i>
Certificate No. <b>1502</b>

