

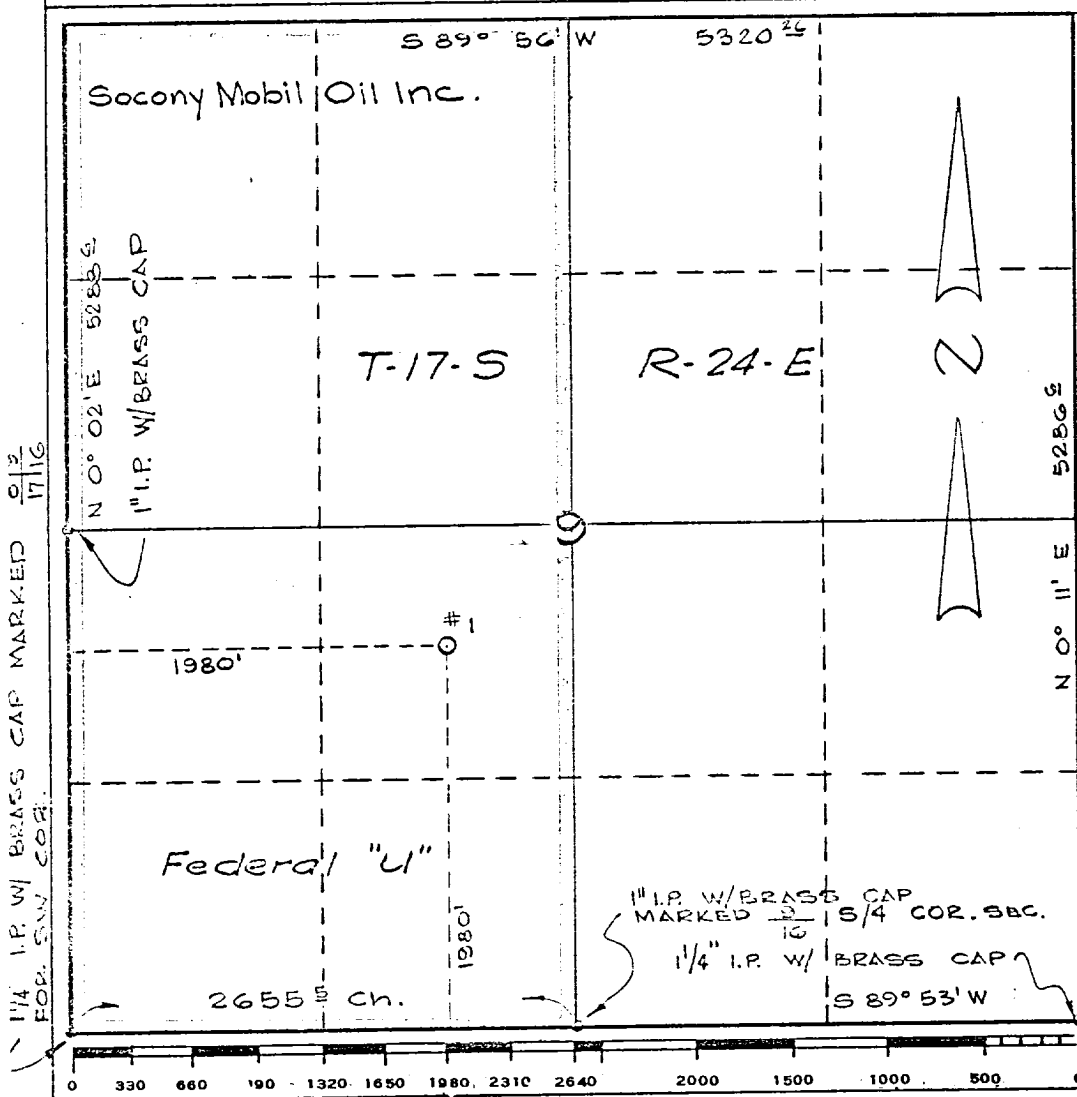
Form C-102
Supersedes C-128
Effective 1-1-65

Operator Socony Mobil Oil Company, Inc.		Lease Federal "U"		Well No. 1
Unit Letter K	Section 9	Township 17 S	Range 24 E	County Eddy
Actual Footage Location of Well: 1980 feet from the West line and 1980 feet from the South line				
Ground Level Elev. 3773	Producing Formation Penn.	Pool Wildcat		Dedicated Acreage: 320 Acres

- ☐ Yes ☐ No If answer is "yes," type of consolidation _____ **FEB 16 1965**

If answer is "no," list the owners and tract descriptions which have actually been consolidated. (Use reverse side of this form if necessary.) ARTESIA, OFFICE

No allowable will be assigned to the well until all interests have been consolidated (by communitization, unitization, forced-pooling, or otherwise) or until a non-standard unit, eliminating such interests, has been approved by the Commission.



I hereby certify that the information contained herein is true and complete to the best of my knowledge and belief.

Name J. J. McDaniel

Position
Group Supervisor

Company
Socony Mobil Oil Company, Inc.

Date
February 8, 1965

I hereby certify that the well location shown on this plat was plotted from field notes of actual surveys made by me or under my supervision, and that the same is true and correct to the best of my knowledge and belief.

Date Surveyed...
February 4, 1965

NEW MEXICO
Registered Professional Engineer
and Land Surveyor

No. 3572

Certificate No. 3572