

JUL 24 1964
30-015-10419
O. C. C.

NOTICE OF INTENTION TO DRILL

Notice must be given to the District Office of the Oil Conservation Commission and approval obtained before drilling begins. If changes in the proposed plan are considered advisable, a copy of this notice showing such changes will be returned to the sender. Submit this notice in QUINTUPPLICATE. One copy will be returned following approval. See additional instructions in Rules and Regulations of the Commission. If State Land submit 6 Copies. Attach Form O-128 in triplicate to first 3 copies of form O-101

Artesia, N. M.
(Place)

July 23, 1964
(Date)

OIL CONSERVATION COMMISSION
SANTA FE, NEW MEXICO

Gentlemen:

You are hereby notified that it is our intention to commence Drilling of a well to be known as

Emmett D. White
(Company or Operator)

White State
(Lease)

Well No. 1

G
(Unit)

located 1980 feet from the North line and 1980 feet from the

East

Line of Section 31

T. 16S

R. 28E

NMPM.

(GIVE LOCATION FROM SECTION LINE)

Wildest

Pool,

Eddy

County

If State Land the Oil and Gas Lease is No. E-8426

If patented land, the owner is

Address

We propose to drill with drilling equipment as follows:

Cable Tools

The cost of plan is \$5,000.00 Single Well Bond

American Employers Insurance Co.

Drilling Contracted to Donnelly Drilling Co., Inc.

Box 433

Artesia, N. M.

We intend to complete this well in the Lovington

formation at an approximate depth of 2350 feet.

CASING PROGRAM

We propose to use the following strings of Casing and to cement as indicated:

Size of Hole	Size of Casing	Weight per Foot	New or Second Hand	Depth	Sacks Cement
12 1/2"	10"	40	SH	150'	Mud *
10"	8 5/8"	24	SH	350'	50 Sacks
8"	7"	20	SH	1000'	Mud *
6 1/4"	5 1/2"	14	New	2350'	100 Sacks

If changes in the above plans become advisable we will notify you immediately.

* To be pulled

ADDITIONAL INFORMATION (If recompletion give full details of proposed plan of work.)

Approved JUL 31 1964, 19
Except as follows:

Sincerely yours,

Emmett D. White

(Company or Operator)

By

Position Agent

Send Communications regarding well to

Name Donnelly Drilling Co., Inc.

Address Box 433, Artesia, N.M.

OIL CONSERVATION COMMISSION

By M. L. Armstrong
MANAGER

OIL CONSERVATION COMMISSION

ARTESIA DISTRICT OFFICE

No. Copies Received 8

DISTRIBUTION

	NO. FURNISHED	
OPERATOR	3	
SANTA FE	1	
PRORATION OFFICE		
STATE LAND OFFICE	1	
U. S. G. S.	2	
TRANSPORTER		
FILE	1-	
BUREAU OF MINES		

NUMBER OF COPIES RECEIVED 8	
DISTRIBUTION	
SANTA FE	
FILE	
U.S.O.S.	
LAND OFFICE	
TRANSPORTER	OIL GAS
PRODUCTION OFFICE	
OPERATOR	3

NEW MEXICO OIL CONSERVATION COMMISSION
WELL LOCATION AND ACREAGE DEDICATION PLAT
 SEE INSTRUCTIONS FOR COMPLETING THIS FORM ON THE REVERSE SIDE

FORM C-128
 Revised 5/1/57

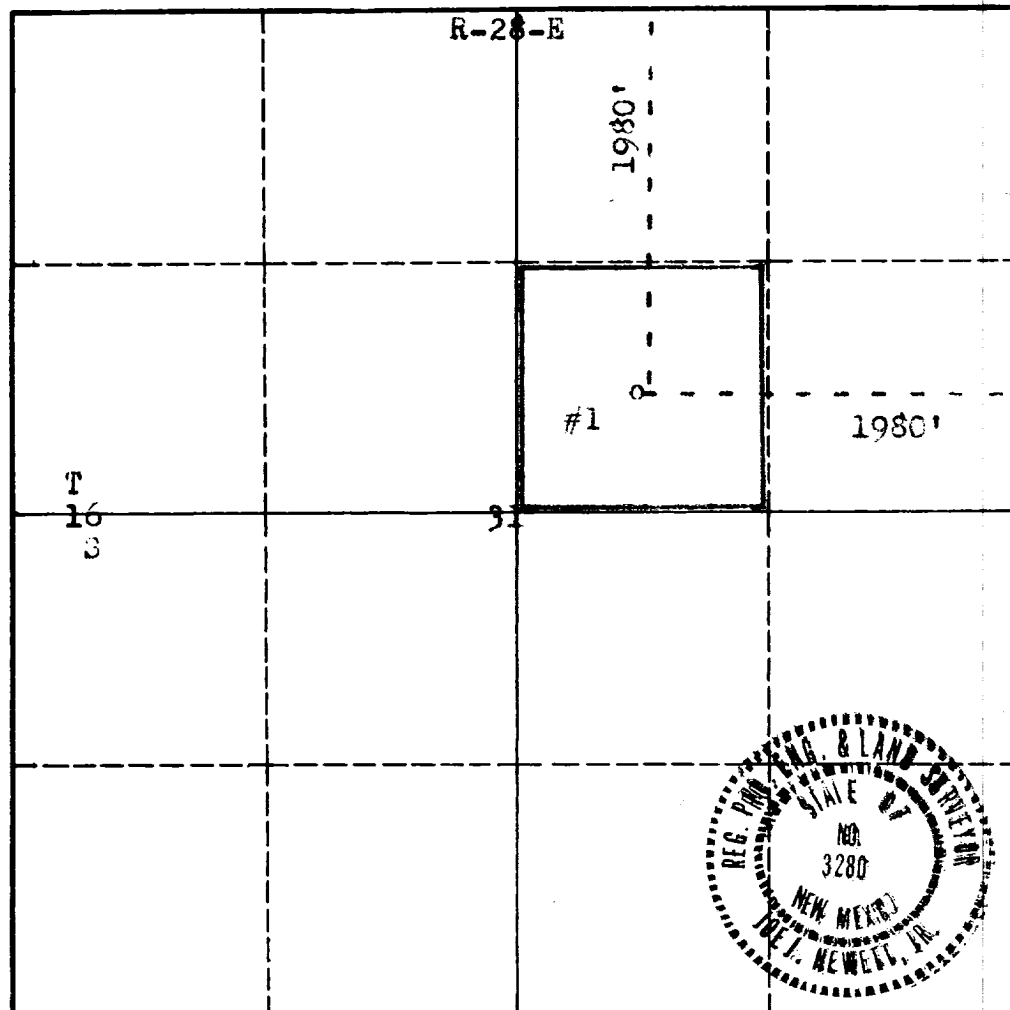
SECTION A

Operator Emmett D. White			Lease White State		Well No. 1
Unit Letter G	Section 31	Township T-16-S	Range R-28-E	County Eddy	
Actual Footage Location of Well: 1980 feet from the North line and 1980 feet from the East line					
Ground Level Elev. 5375	Producing Formation Lovington		Pool Wildcat	Dedicated Acreage: 40 Acres	

- Is the Operator the only owner in the dedicated acreage outlined on the plat below? YES ☒ NO ____ . ("Owner" means the person who has the right to drill into and to produce from any pool and to appropriate the production either for himself or for himself and another. (65-3-29 (e) NMSA 1935 Comp.)
- If the answer to question one is "no," have the interests of all the owners been consolidated by communication agreement or otherwise? YES ____ NO ____ . If answer is "yes," Type of Consolidation _____
- If the answer to question two is "no," list all the owners and their respective interests below:

Owner	Land Description
	JUL 24 1964
	O. C. C. ARTESIA, OFFICE

SECTION B



CERTIFICATION

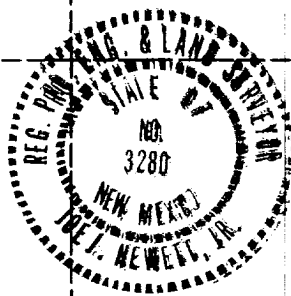
I hereby certify that the information in SECTION A above is true and complete to the best of my knowledge and belief.

Name
F. H. Donnelly
 Position
Agent
 Company
Emmett D. White
 Date
July 24, 1964

I hereby certify that the well location shown on the plat in SECTION B was plotted from field notes of actual surveys made by me or under my supervision, and that the same is true and correct to the best of my knowledge and belief.

Date Surveyed
July 24, 1964
 Registered Professional Engineer
 and/or Land Surveyor

Certificate No. **3280**



INSTRUCTIONS FOR COMPLETION OF FORM C-128

1. Operator shall furnish and certify to the information called for in Section A.
2. Operator shall outline the dedicated acreage for *both* oil and gas wells on the plat in Section B.
3. A registered professional engineer or land surveyor registered in the State of New Mexico or approved by the Commission shall show on the plat the location of the well and certify this information in the space provided.
4. All distances shown on the plat must be from the outer boundaries of the Section.
5. If additional space is needed for listing owners and their respective interests as required in question 3 of Section A, please use space below.