

NEW MEXICO OIL CONSERVATION COMMISSION  
WELL LOCATION AND ACREAGE DEDICATION PLAT

RECEIVED  
FORM C-128  
Revised 5/1/57  
SEP 7 1965

SEE INSTRUCTIONS FOR COMPLETING THIS FORM ON THE REVERSE SIDE

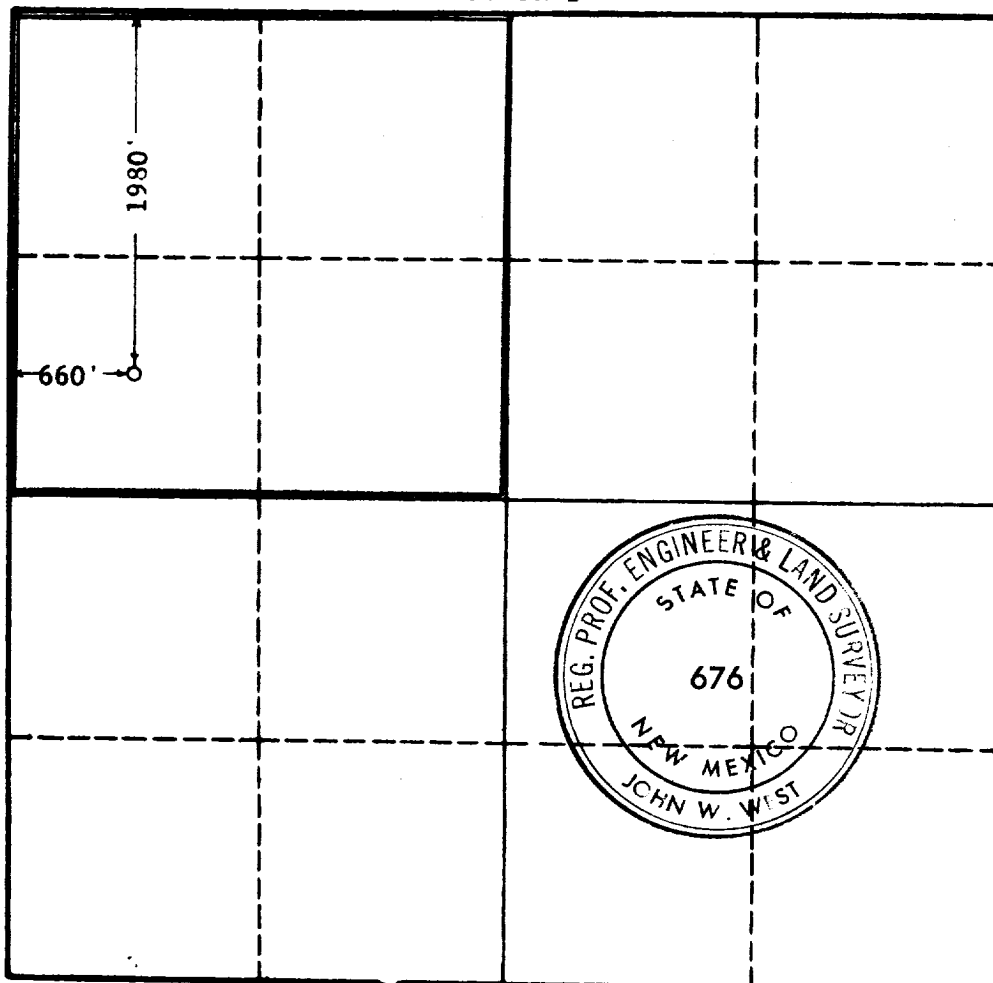
SECTION A

Operator CHARLES B. READ		Lease BOGLE FARMS		ARTESIA, OFFICE WELL NO. 2	
Unit Letter E	Section 13	Township 16 SOUTH	Range 31 EAST	County EDDY	
Actual Footage Location of Well: 1980 feet from the NORTH line and 660 feet from the WEST line					
Ground Level Elev. 4395.6	Producing Formation Queen		Pool Undesignated	Dedicated Acreage: 160 Acres	

1. Is the Operator the only owner in the dedicated acreage outlined on the plat below? YES Bunker Hill NO \_\_\_\_ . ("Owner" means the person who has the right to drill into and to produce from any pool and to appropriate the production either for himself or for himself and another. (65-3-29 (e) NMSA 1935 Comp.)
2. If the answer to question one is "no," have the interests of all the owners been consolidated by communitization agreement or otherwise? YES \_\_\_\_ NO \_\_\_\_ . If answer is "yes," Type of Consolidation \_\_\_\_\_
3. If the answer to question two is "no," list all the owners and their respective interests below:

Owner	Land Description
	AUG 18 1965

SECTION B



RECEIVED  
O. C. C.  
ARTESIA, OFFICE  
CERTIFICATION

I hereby certify that the information in SECTION A above is true and complete to the best of my knowledge and belief.

Name Charles B. Read  
Position Operator  
Company Charles B. Read  
Date July 12, 1965

I hereby certify that the well location shown on the plat in SECTION B was plotted from field notes of actual surveys made by me or under my supervision, and that the same is true and correct to the best of my knowledge and belief.

Date Surveyed JULY 3, 1965  
Registered Professional Engineer and/or Land Surveyor, JOHN W. WEST  
John W. West  
Certificate No. N. M. - P. E. & L. S. NO. 676

0 330 660 990 1320 1650 1980 2310 2640 2000 1500 1000 500

OIL CONSERVATION COMMISSION		
ARTESIA DISTRICT OFFICE		
No. Copies Received <u>5</u>		
DISTRIBUTION		
	CO. FURNISHED	
OPERATOR	/	
SANTA FE	/	
PRODUCTION		
STATE ENGINEER	/	
U. S. G. S.	/	
TRANSPORTER		
FILE	/	
BUREAU OF MINES		