

**NEW MEXICO OIL CONSERVATION COMMISSION
WELL LOCATION AND ACREAGE DEDICATION PLAT**

Form C-102
Supersedes C-128
Effective 1-1-65

All distances must be from the outer boundaries of the Section.

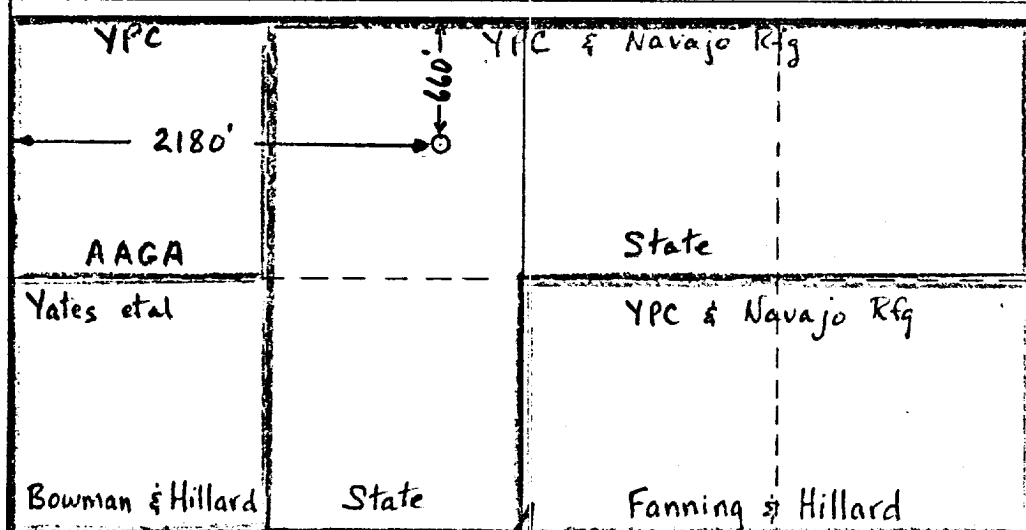
Operator Yates Petroleum Corp			Lease State CK		Well No. 1
Unit Letter C	Section 4	Township 17S	Range 26E	County Eddy	
Actual Footage Location of Well: 660 feet from the North line and 2180 feet from the West line					
Ground Level Elev. 3365	Producing Formation Morrow	Pool - Wildcat	Dedicated Acreage: 320 Acres		

1. Outline the acreage dedicated to the subject well by colored pencil or hatchure marks on the plat below.
2. If more than one lease is dedicated to the well, outline each and identify the ownership thereof (both as to working interest and royalty).
3. If more than one lease of different ownership is dedicated to the well, have the interests of all owners been consolidated by communitization, unitization, force-pooling, etc?

☒ Yes ☐ No If answer is "yes," type of consolidation **Communitized**

If answer is "no," list the owners and tract descriptions which have actually been consolidated. (Use reverse side of this form if necessary.) _____

No allowable will be assigned to the well until all interests have been consolidated (by communitization, unitization, forced-pooling, or otherwise) or until a non-standard unit, eliminating such interests, has been approved by the Commission.



RECEIVED

DEC 3 1976

O. C. C.
ARTESIA, OFFICE

CERTIFICATION

I hereby certify that the information contained herein is true and complete to the best of my knowledge and belief.

Eddie M. Mahfood
Name

Eddie M. Mahfood

Position
Engineer

Company
Yates Petroleum Corp.

Date
12-1-76

I hereby certify that the well location shown on this plat was plotted from field notes of actual surveys made by me or under my supervision, and that the same is true and correct to the best of my knowledge and belief. Refer to **Original Plat - Chas C. Loveless Marathon State #1.**

Date Surveyed

Registered Professional Engineer and/or Land Surveyor

Certificate No.

