

Form 9-331
(May 1963)UNITED STATES
DEPARTMENT OF THE INTERIOR
GEOLOGICAL SURVEYSUBMIT IN TRIPPLICATE*
(Other instructions on reverse side)Form approved.
Budget Bureau No. 42-R1424.

5. LEASE DESIGNATION AND SERIAL NO.

NM-074951

6. IF INDIAN, ALLOTTEE OR TRIBE NAME

SUNDRY NOTICES AND REPORTS ON WELLS

(Do not use this form for proposals to drill or to deepen or plug back to a different reservoir.
Use "APPLICATION FOR PERMIT—" for such proposals.)

RECEIVED

1. OIL WELL ☒ GAS WELL ☐ OTHER ☐2. NAME OF OPERATOR *C. E. Staples*
Arwood, Ltd.

AUG 26 1981

3. ADDRESS OF OPERATOR

P. O. Box 8 Loco Hills, New Mexico

O. C. D.

4. LOCATION OF WELL (Report location clearly and in accordance with any State requirements.
See also space 17 below.)
At surface

ARTESIA OFFICE

7. UNIT AGREEMENT NAME

8. FARM OR LEASE NAME

Etz "B" Federal

9. WELL NO.

1

10. FIELD AND POOL, OR WILDCAT

Sq. Lake-Grayburg San

11. SEC., T., R., M., OR BLK. AND SURVEY OR AREA

*Andre**Sec 24-16S-30E*

12. COUNTY OR PARISH 13. STATE

*Eddy**N. Mex.*

660' FSL 1650' FEL

14. PERMIT NO.

15. ELEVATIONS (Show whether DF, RT, GR, etc.)

16. Check Appropriate Box To Indicate Nature of Notice, Report, or Other Data

NOTICE OF INTENTION TO:

TEST WATER SHUT-OFF ☐FRACTURE TREAT ☐SHOOT OR ACIDIZE ☐REPAIR WELL ☐(Other) ☐PULL OR ALTER CASING ☐MULTIPLE COMPLETE ☐ABANDON* ☒CHANGE PLANS ☐

SUBSEQUENT REPORT OF:

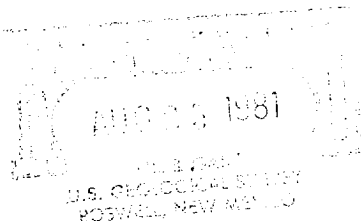
WATER SHUT-OFF ☐FRACTURE TREATMENT ☐SHOOTING OR ACIDIZING ☐(Other) ☐REPAIRING WELL ☐ALTERING CASING ☐ABANDONMENT* ☐

(NOTE: Report results of multiple completion on Well Completion or Recompletion Report and Log form.)

17. DESCRIBE PROPOSED OR COMPLETED OPERATIONS (Clearly state all pertinent details, and give pertinent dates, including estimated date of starting any proposed work. If well is directionally drilled, give subsurface locations and measured and true vertical depths for all markers and zones pertinent to this work.)*

Propose to plug and abandon well in following manner.

Set cement retainer tool 100' above perforation. Squeeze cement into perforation (at least 10 sacks above well bore volume). Fill well bore with mud to shoe of surface pipe. Perforate above casing shoe squeeze cement to surface, if not perforate top salt squeeze cement. Pump 10 sack plug at surface.

min. 554' Perf 4 1/2" csg. @ 1490' + sg. leave 100' plug from 1490' to 1390'
min. 554' Perf 4 1/2" csg. @ 500' + sg. leave 100' plug from 500' to 400'

18. I hereby certify that the foregoing is true and correct

SIGNED

TITLE *Supt.*DATE *8-24-81*

(This space for Federal or State office use)

APPROVED BY
CONDITIONS OF APPROVAL, IF ANY:

TITLE

APPROVED AS AMENDED

DATE

*AUG 25 1981**2nd*
G.A.F.
JAMES A. GILLHAM
DISTRICT SUPERVISOR

*See Instructions on Reverse Side

Well is plugged

P/A Marker in Place
Location Clean.

Put into ON6RM
1/27/01

P/A Marker has Arrow, Lt. J.

2/18/2001
Phil
