

UNITED STATES
DEPARTMENT OF THE INTERIOR
GEOLOGICAL SURVEY30-015-20353
5. LEASE DESIGNATION AND SERIAL NO.

NM054434

APPLICATION FOR PERMIT TO DRILL, DEEPEN, OR PLUG BACK

1a. TYPE OF WORK

DRILL ☒DEEPEN ☐PLUG BACK ☐

b. TYPE OF WELL

OIL
WELL ☐GAS
WELL ☐

OTHER

SINGLE
ZONE ☐MULTIPLE
ZONE ☐

2. NAME OF OPERATOR

Yates Petroleum Corporation

3. ADDRESS OF OPERATOR

207 South 4th Street Artesia, New Mexico 88210

4. LOCATION OF WELL (Report location clearly and in accordance with any State requirements.)

At surface

NE NW 990' FNL and 2310' FWL Sec. 27-17S-25E

At proposed prod. zone

14. DISTANCE IN MILES AND DIRECTION FROM NEAREST TOWN OR POST OFFICE*

3 miles from Artesia, New Mexico

10. DISTANCE FROM PROPOSED*

LOCATION TO NEAREST
PROPERTY OR LEASE LINE, FT.
(Also to nearest drg. unit line, if any)

16. NO. OF ACRES IN LEASE

80

17. NO. OF ACRES ASSIGNED
TO THIS WELL

40

18. DISTANCE FROM PROPOSED LOCATION*
TO NEAREST WELL, DRILLING, COMPLETED,
OR APPLIED FOR, ON THIS LEASE, FT.

19. PROPOSED DEPTH

Approx. 1500'

20. ROTARY OR CABLE TOOLS

Rotary

21. ELEVATIONS (Show whether DF, RT, GR, etc.)

3531' GR

22. APPROX. DATE WORK WILL START*

As soon as approved

23.

PROPOSED CASING AND CEMENTING PROGRAM

SIZE OF HOLE	SIZE OF CASING	WEIGHT PER FOOT	SETTING DEPTH	QUANTITY OF CEMENT
9 7/8"	7"	23#	Approx. 1100'	Circulate
6 1/4"	5 1/2"	15.5#)	" 1000'	Cmt. 100' into surface csg.
	4 1/2"	9.5#)	" 400'	

It is our intention to drill 9 7/8" hole to approx. 1100', set 7" surface casing and circulate, then reduce hole to 6 1/4", drill to total depth of approx. 1500'. If production is encountered set a tapered string of production casing extending 100' into the 7" casing.

RECEIVED

DEC 1 1970

O. C. C.
ARTESIA, OFFICERECEIVED
NOV 30 1970
U. S. GEOLOGICAL SURVEY
ARTESIA, NEW MEXICO

IN ABOVE SPACE DESCRIBE PROPOSED PROGRAM: If proposal is to deepen or plug back, give data on present productive zone and proposed new productive zone. If proposal is to drill or deepen directionally, give pertinent data on subsurface locations and measured and true vertical depths. Give blowout preventer program, if any.

24.

SIGNED

TITLE

Engineer

DATE

11-30-70

(This space for Federal or State office use)

PERMIT NO.

APPROVAL DATE

DECLARED WATER BASIN

APPROVED BY
CONDITIONS OF APPROVAL, IF ANY:TITLES
OPERATIONS
ARE NOT COMMENCED WITHIN 3 MONTHS.CEMENT BEHIND THE 7"
CASING MUST BE CIRCULATEDNOTIFY USGS IN SUFFICIENT TIME TO
WITNESS CEMENTING THE 7" CASINGTHIS APPROVAL IS RESCINDED IF OPERATIONS
ARE NOT COMMENCED WITHIN 3 MONTHS.
FEB 28 1971
Instructions On Reverse SideAPPROVED
NOV 30 1970
R. L. BEEKMA
ACTING DISTRICT ENGINEER

NEW MEXICO OIL CONSERVATION COMMISSION
WELL LOCATION AND ACREAGE DEDICATION PLAT

Form C-102
Supersedes C-128
Effective 1-1-65

All distances must be from the outer boundaries of the Section.

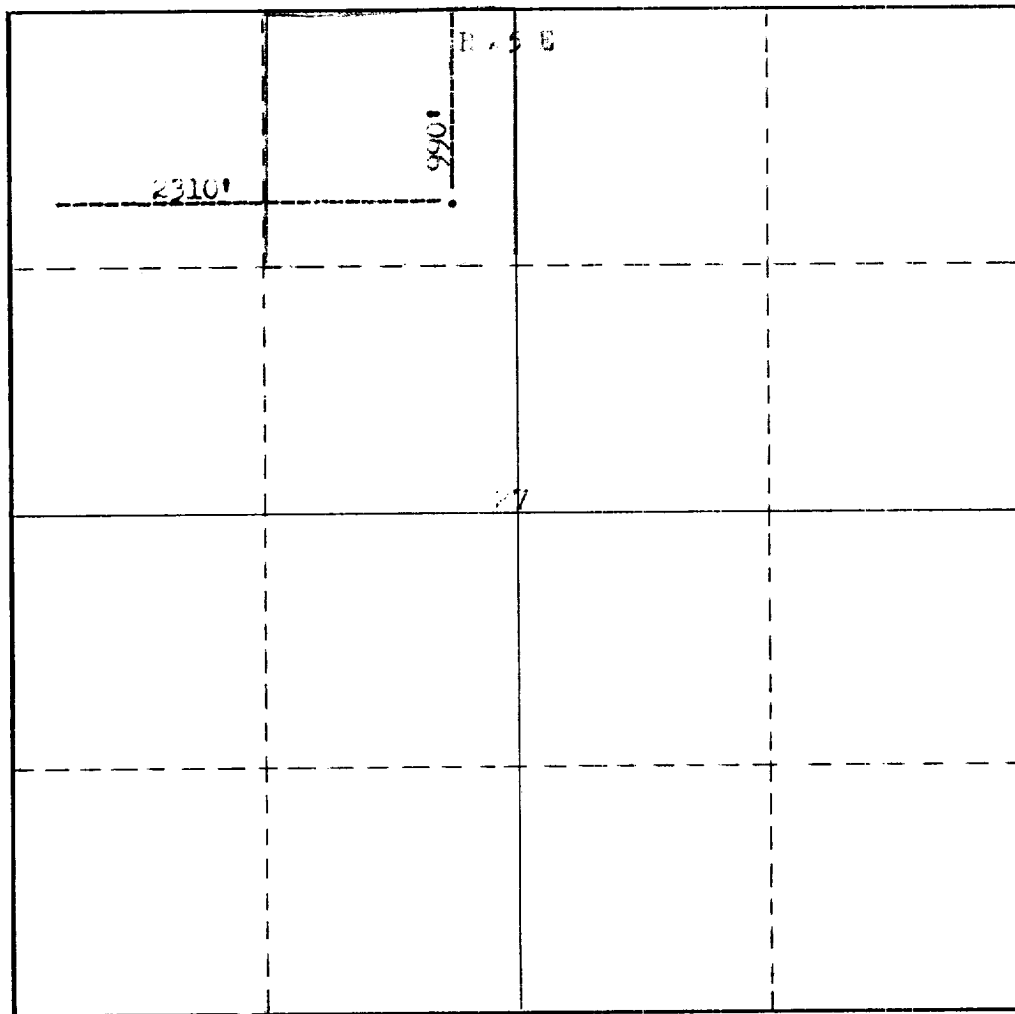
Operator Yates Petroleum Corp.			Lease XXXXXXX Federal BQ		Well No. 1
Unit Letter C	Section 27	Township 17S	Range 22E	County add.	
Actual Footage Location of Well:					
990 feet from the North line and 2310 feet from the west line					
Ground Level Elev: 3931	Producing Formation San Andres		Pool Egale Creek San Andres		Dedicated Acreage: 40 Acres

1. Outline the acreage dedicated to the subject well by colored pencil or hachure marks on the plat below.
2. If more than one lease is dedicated to the well, outline each and identify the ownership thereof (both as to working interest and royalty).
3. If more than one lease of different ownership is dedicated to the well, have the interests of all owners been consolidated by communitization, unitization, force-pooling, etc?

☐ Yes ☐ No If answer is "yes," type of consolidation _____

If answer is "no," list the owners and tract descriptions which have actually been consolidated. (Use reverse side of this form if necessary.) _____

No allowable will be assigned to the well until all interests have been consolidated (by communitization, unitization, forced-pooling, or otherwise) or until a non-standard unit, eliminating such interests, has been approved by the Commission.



CERTIFICATION

I hereby certify that the information contained herein is true and complete to the best of my knowledge and belief.

Name
Eddie M. Mahfood

Position
Engineer

Company
Yates Petroleum Corp.

Date
11-30-70

I hereby certify that the well location shown on this plat was plotted from field notes of actual surveys made by me or under my supervision, and that the same is true and correct to the best of my knowledge and belief.

Date Surveyed

November 24 1970

Registered Professional Engineer and/or Land Surveyor

Certificate No.

James H. Brown