

NO. OF COPIES RECEIVED	1
DISTRIBUTION	
SANTA FE	
FILE	1
U.S.G.S.	21
LAND OFFICE	
OPERATOR	5

**RECEIVED**  
NEW MEXICO OIL CONSERVATION COMMISSION

MAR 11 1971

**O.C.C.**  
ARTESIA, OFFICE

30-015-20395  
Form C-101  
Revised 1-1-65

5A. Indicate Type of Lease	
STATE <input type="checkbox"/>	FEE <input checked="" type="checkbox"/>
5. State Oil & Gas Lease No.	

**APPLICATION FOR PERMIT TO DRILL, DEEPEN, OR PLUG BACK**

1a. Type of Work		7. Unit Agreement Name	
b. Type of Well OIL WELL <input checked="" type="checkbox"/> GAS WELL <input type="checkbox"/> OTHER <input type="checkbox"/>		8. Farm or Lease Name White "BU"	
2. Name of Operator Yates Petroleum Corporation		9. Well No. 1	
3. Address of Operator 207 South 4th Street - Artesia, New Mexico 88210		10. Field and Pool, or Wildcat und. Eagle Creek S.A.	
4. Location of Well UNIT LETTER <u>F</u> LOCATED <u>2310'</u> FEET FROM THE <u>North</u> LINE AND <u>2310</u> FEET FROM THE <u>West</u> LINE OF SEC. <u>14</u> TWP. <u>17S</u> RGE. <u>25E</u> NMPM		12. County Eddy	
19. Proposed Depth Approx. 1500'		19A. Formation San Andres	
20. Rotary or C.T. Rotary		21. Elevations (Show whether DF, RT, etc.) 3496' GL	
21A. Kind & Status Plug. Bond Blanket Bond		21B. Drilling Contractor Yates Pet. Corp.	
22. Approx. Date Work will start As soon as approved			

23. PROPOSED CASING AND CEMENT PROGRAM

SIZE OF HOLE	SIZE OF CASING	WEIGHT PER FOOT	SETTING DEPTH	SACKS OF CEMENT	EST. TOP
12 1/2"	10 3/4"	32#	200'	Mudded	
9 7/8"	7"	23#	1150'	Circulate	
6 1/2"	4 1/2"	9.5# ) Tapered	450'	Circulate	
	5 1/2"	15.5# )	1050' ) Tapered		

The 10 3/4" casing will be mudded up.

It is our intention to drill a 9 7/8" hole to approx. 1150', set 7" surface casing and circulate the cement, then reduce the hole to 6 1/2", drill to a total depth of approx. 1500'. If production is encountered, set a tapered string of production casing and circulate the cement.

APPROVAL VALID  
FOR 90 DAYS UNLESS  
DRILLING COMMENCED,  
EXPIRES 6-11-71

IN ABOVE SPACE DESCRIBE PROPOSED PROGRAM; IF PROPOSAL IS TO DEEPEN OR PLUG BACK, GIVE DATA ON PRESENT PRODUCTIVE ZONE AND PROPOSED NEW PRODUCTIVE ZONE. GIVE BLOWOUT PREVENTER PROGRAM, IF ANY.

I hereby certify that the information above is true and complete to the best of my knowledge and belief.

Signed Eddie W. Gressett Title Engineer Date 3-10-71

(This space for State Use)

APPROVED BY W.A. Gressett TITLE OIL AND GAS INSPECTOR DATE MAR 11 1971

CONDITIONS OF APPROVAL, IF ANY:  
Cement must be circulated to  
surface behind 7" casing

Notify N.M.O.C.C. in sufficient  
time to witness cementing  
the 7" casing

N MEXICO OIL CONSERVATION COMMISS.  
WELL LOCATION AND ACREAGE DEDICATION PLAT

Form C-102  
Supersedes C-128  
Effective 1-1-65

All distances must be from the outer boundaries of the Section.

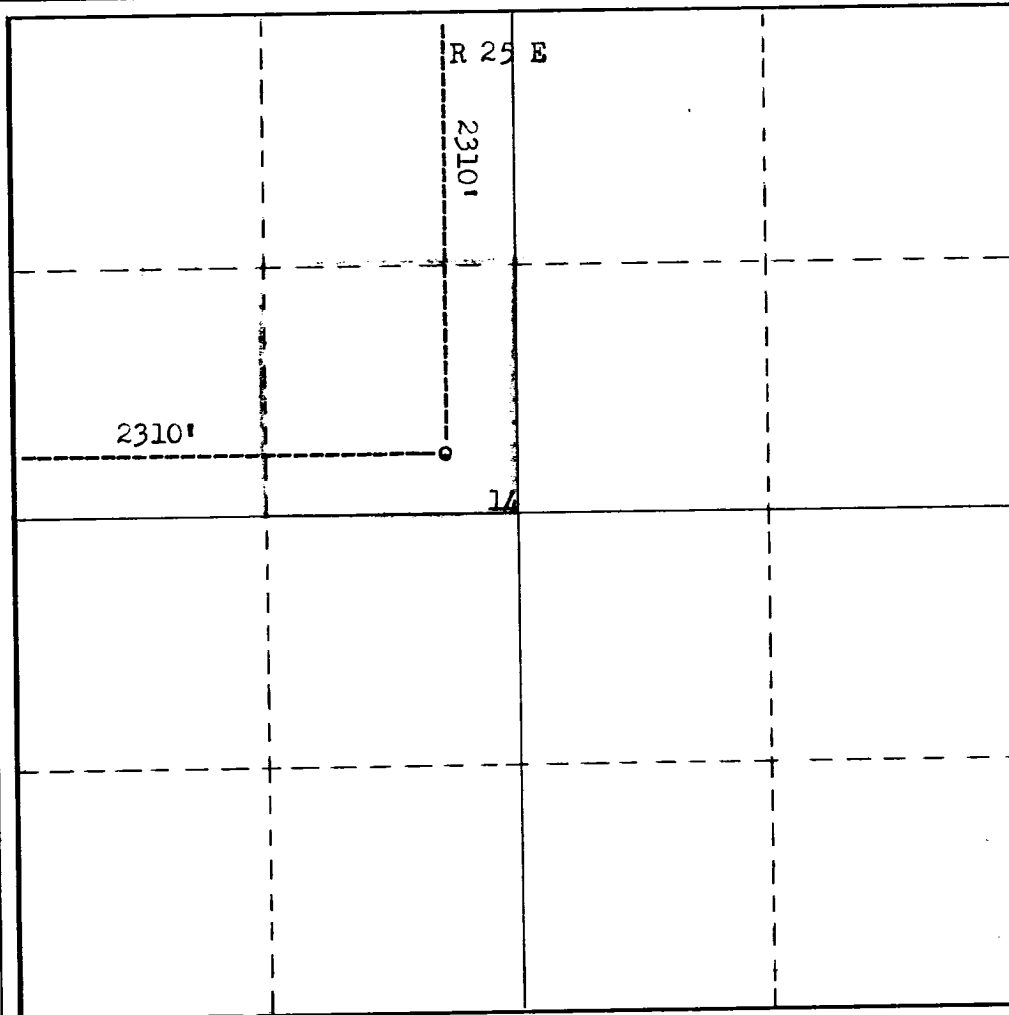
Operator <b>Yates Petroleum Corp.</b>			Lease <b>White BU.</b>		Well No. <b>1</b>
Unit Letter <b>F</b>	Section <b>14</b>	Township <b>17 South</b>	Range <b>25 East</b>	County <b>Eddy</b>	
Actual Footage Location of Well: <b>2310</b> feet from the <b>North</b> line and <b>2310</b> feet from the <b>West</b> line					
Ground Level Elev. <b>3496</b>	Producing Formation <b>San Andres</b>		Pool <b>Und. Eagle Creek S.A.</b>		Dedicated Acreage: <b>40</b> Acres

1. Outline the acreage dedicated to the subject well by colored pencil or hachure marks on the plat below.
2. If more than one lease is dedicated to the well, outline each and identify the ownership thereof (both as to working interest and royalty).
3. If more than one lease of different ownership is dedicated to the well, have the interests of all owners been consolidated by communitization, unitization, force-pooling, etc?

☐ Yes ☐ No If answer is "yes," type of consolidation \_\_\_\_\_

If answer is "no," list the owners and tract descriptions which have actually been consolidated. (Use reverse side of this form if necessary.) \_\_\_\_\_

No allowable will be assigned to the well until all interests have been consolidated (by communitization, unitization, forced-pooling, or otherwise) or until a non-standard unit, eliminating such interests, has been approved by the Commission.



**CERTIFICATION**

I hereby certify that the information contained herein is true and complete to the best of my knowledge and belief.

Name  
**Eddie M. Mahfood**

Position  
**Engineer**

Company  
**Yates Pet. Corporation**

Date  
**3-10-71**

I hereby certify that the well location shown on this plat was plotted from field notes of actual surveys made by me or under my supervision, and that the same is true and correct to the best of my knowledge and belief.

Date Surveyed  
**March 8, 1971**

Registered Professional Engineer and/or Land Surveyor

Certificate No.

**542**

T  
17  
S

0 330 660 990 1320 1650 1980 2310 2640 2000 1500 1000 500