

NO. OF COPIES RECEIVED	7
DISTRIBUTION	
SANTA FE	1
FILE	1
U.S.G.S.	2
LAND OFFICE	
OPERATOR	2

RECEIVED
NEW MEXICO OIL CONSERVATION COMMISSION

APR 5 1971

O. C. C.
ARTESIA, OFFICE

30-015-20414
Form C-101
Revised 1-1-65

5A. Indicate Type of Lease
STATE <input type="checkbox"/> FEE <input checked="" type="checkbox"/>
5. State Oil & Gas Lease No.

APPLICATION FOR PERMIT TO DRILL, DEEPEN, OR PLUG BACK

1a. Type of Work DRILL <input checked="" type="checkbox"/> DEEPEN <input type="checkbox"/> PLUG BACK <input type="checkbox"/>		7. Unit Agreement Name
b. Type of Well OIL WELL <input checked="" type="checkbox"/> GAS WELL <input type="checkbox"/> OTHER <input type="checkbox"/> SINGLE ZONE <input type="checkbox"/> MULTIPLE ZONE <input type="checkbox"/>		8. Farm or Lease Name J Lazy J
2. Name of Operator Yates Petroleum Corporation		9. Well No. 3
3. Address of Operator 207 South 4th Street - Artesia, New Mexico 88210		10. Field and Pool, or Wildcat Eagle Creek S.A.
4. Location of Well UNIT LETTER G LOCATED 2310 FEET FROM THE North LINE 1050 East 22 17S 25E AND FEET FROM THE LINE OF SEC. TWP. RGE. NMPM		12. County Eddy
19. Proposed Depth Approx. 1500'		19A. Formation San Andres
20. Rotary or C.T. Rotary		
21. Elevations (Show whether DF, RT, etc.) 3526' GL	21A. Kind & Status Plug. Bond Blanket Bond	21B. Drilling Contractor Cactus Drilling Co.
22. Approx. Date Work will start As soon as approved		

23.

PROPOSED CASING AND CEMENT PROGRAM

SIZE OF HOLE	SIZE OF CASING	WEIGHT PER FOOT	SETTING DEPTH	SACKS OF CEMENT	EST. TOP
9 7/8"	-	-	700'	-	
9"	7"	20#	Approx. 1150'	Circulate	
6 1/4"	4 1/2" (Tapered)	9.5#	" 450'	Circulate	
	5 1/2"	15.5#	" 1050'		

It is our intention to drill a 9 7/8" hole to approx. 700', reduce hole to 9" and drill to approx. 1150', set 7" surface casing and circulate the cement. We will then reduce the hole to 6 1/4" and drill to approx. 1500'. If production is encountered, set 4 1/2" & 5 1/2", tapered string, of production casing according to the NMOCC rules and regulations.

APPROVAL VALID
FOR 90 DAYS UNLESS
DRILLING COMMENCED,
EXPIRES 4-7-5-71

IN ABOVE SPACE DESCRIBE PROPOSED PROGRAM: IF PROPOSAL IS TO DEEPEN OR PLUG BACK, GIVE DATA ON PRESENT PRODUCTIVE ZONE AND PROPOSED NEW PRODUCTIVE ZONE. GIVE BLOWOUT PREVENTER PROGRAM, IF ANY.

I hereby certify that the information above is true and complete to the best of my knowledge and belief.

Signed Edgar L. Gussert Title Engineer Date 4-2-71

(This space for State Use)

APPROVED BY W. A. Gussert TITLE OIL AND GAS INSPECTOR DATE APR 5 1971

CONDITIONS OF APPROVAL IF ANY
Notify N.M.O.C.C. in sufficient

time to witness cementing

the 7" casing

Cement must be circulated to
surface behind 7" casing

N. MEXICO OIL CONSERVATION COMMISSION
WELL LOCATION AND ACREAGE DEDICATION PLAT

Form C-102
Supersedes C-128
Effective 1-1-65

All distances must be from the outer boundaries of the Section.

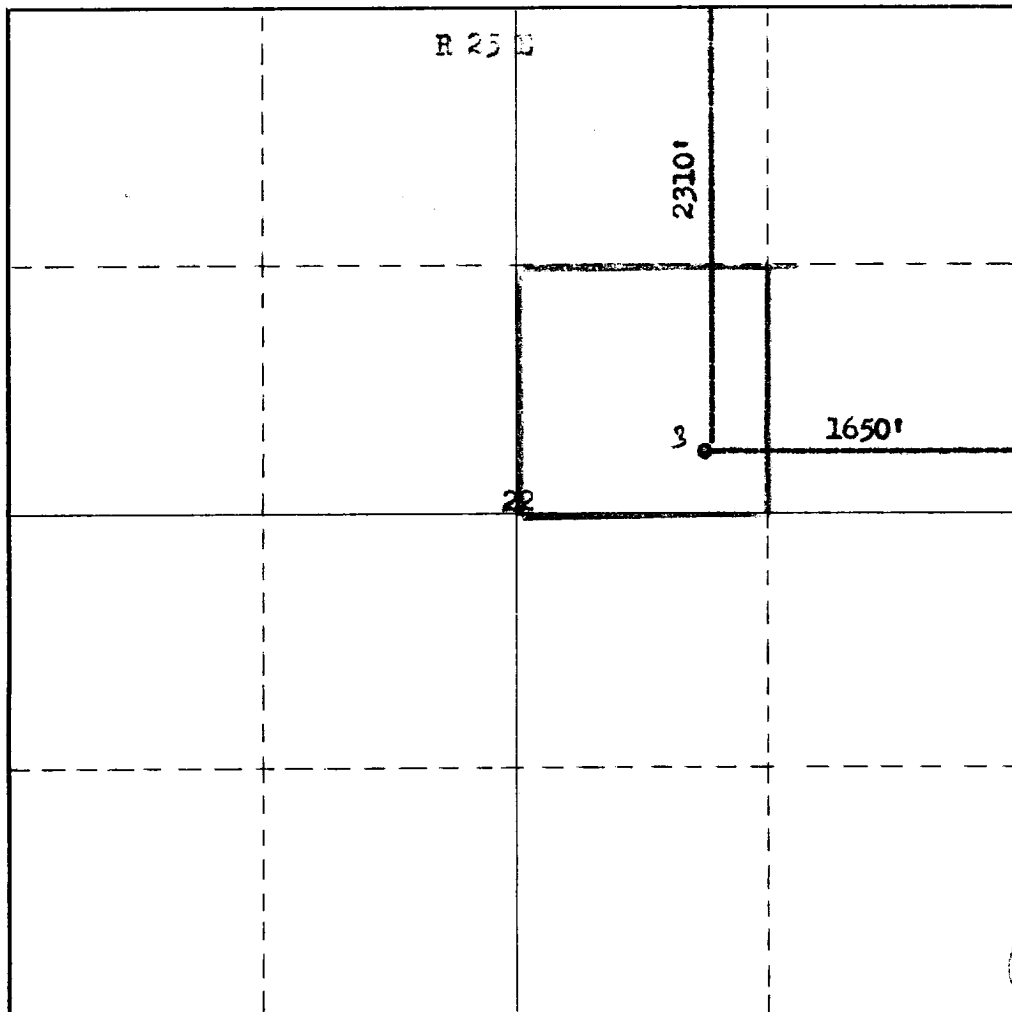
Operator Yates Petroleum Corporation			Lease J Lazy J		Well No. 3
Unit Letter G	Section 22	Township 17 South	Range 25 East	County Eddy	
Actual Footage Location of Well: 2310 feet from the North line and 1650 feet from the East line					
Ground Level Elev. 3526	Producing Formation San Andres		Pool Eagle Creek S.A.		Dedicated Acreage: 40 Acres

1. Outline the acreage dedicated to the subject well by colored pencil or hachure marks on the plat below.
2. If more than one lease is dedicated to the well, outline each and identify the ownership thereof (both as to working interest and royalty).
3. If more than one lease of different ownership is dedicated to the well, have the interests of all owners been consolidated by communitization, unitization, force-pooling, etc?

☐ Yes ☐ No If answer is "yes," type of consolidation _____

If answer is "no," list the owners and tract descriptions which have actually been consolidated. (Use reverse side of this form if necessary.) _____

No allowable will be assigned to the well until all interests have been consolidated (by communitization, unitization, forced-pooling, or otherwise) or until a non-standard unit, eliminating such interests, has been approved by the Commission.



CERTIFICATION

I hereby certify that the information contained herein is true and complete to the best of my knowledge and belief.

Eddie M. Mahfood
Name

Eddie M. Mahfood

Position

Engineer

Company

Yates Petroleum Corp.

Date

4-2-71

I hereby certify that the well location shown on this plat was plotted from field notes of actual surveys made by me or under my supervision, and that the same is true and correct to the best of my knowledge and belief.

James H. Brown
REGISTERED LAND SURVEYOR
JAMES H. BROWN

Date Surveyed

March 30, 1971

Registered Professional Engineer
and/or Land Surveyor

James H. Brown
Certificate No.

542

0 330 660 990 1320 1650 1980 2310 2640 2000 1500 1000 500