

NO. OF COPIES RECEIVED	
DISTRIBUTION	
SANTA FE	
FILE	
U.S.G.S.	
LAND OFFICE	
OPERATOR	

RECEIVED
NEW MEXICO OIL CONSERVATION COMMISSION
APR 9 1971
D.C.C.
ARTESIA, OFFICE

30-615-20419
 Form C-101
 Revised 1-1-65

5A. Indicate Type of Lease	
STATE <input type="checkbox"/>	FEE <input checked="" type="checkbox"/>
5. State Oil & Gas Lease No.	

APPLICATION FOR PERMIT TO DRILL, DEEPEN, OR PLUG BACK

1a. Type of Work		7. Unit Agreement Name	
b. Type of Well OIL WELL <input checked="" type="checkbox"/> GAS WELL <input type="checkbox"/> OTHER <input type="checkbox"/> DRILL <input checked="" type="checkbox"/> DEEPEN <input type="checkbox"/> PLUG BACK <input type="checkbox"/> SINGLE ZONE <input type="checkbox"/> MULTIPLE ZONE <input type="checkbox"/>		8. Farm or Lease Name Gissler "AV"	
2. Name of Operator Vates Petroleum Corporation ✓		9. Well No. 6	
3. Address of Operator 207 South 4th Street - Artesia, New Mexico		10. Field and Pool, or Wildcat Eagle Creek S.A.	
4. Location of Well UNIT LETTER <u>G</u> LOCATED <u>2310'</u> FEET FROM THE <u>NORTH</u> LINE <u>1650</u> FEET FROM THE <u>East</u> LINE OF SEC. <u>23</u> TWP. <u>17S</u> RGE. <u>25E</u> NMPM		12. County Edo	
19. Proposed Depth Approx. 1500'		19A. Formation San Andres	
20. Rotary or C.T. Rotary		21. Elevations (Show whether DE, RT, etc.) 3492' CL	
21A. Kind & Status Plug. Bond Blanket		21B. Drilling Contractor Cactus Drilling Co.	
22. Approx. Date Work will start As soon as approved			

PROPOSED CASING AND CEMENT PROGRAM

SIZE OF HOLE	SIZE OF CASING	WEIGHT PER FOOT	SETTING DEPTH	SACKS OF CEMENT	EST. TOP
9 7/8"	-	-	700'	-	
9"	7"	20#	Approx. 1150'	Circulate	
6 1/2"	4 1/2") Tapered	9.5#)	" 450'	Circulate	
	5 1/2")	15.5#)	" 1050'		

It is our intention to drill a 9 7/8" hole to approx. 700'. Reduce hole to 9" and drill to approx. 1150', set 7" surface casing and circulate the cement. We will then reduce the hole to 6 1/2" and drill to approx. 1500'. If production is encountered, set 4 1/2" & 5 1/2", tapered string, of production casing according to the NMOCC rules and regulations.

FOR STATE USE UNLESS
 DRILLING COMMENCED,
 EXPIRES 7-12-71

IN ABOVE SPACE DESCRIBE PROPOSED PROGRAM: IF PROPOSAL IS TO DEEPEN OR PLUG BACK, GIVE DATA ON PRESENT PRODUCTIVE ZONE AND PROPOSED NEW PRODUCTIVE ZONE. GIVE BLOWOUT PREVENTER PROGRAM, IF ANY.

I hereby certify that the information above is true and complete to the best of my knowledge and belief.

Signed [Signature] Title Engineer Date 4-8-71

(This space for State Use)

APPROVED BY W. R. Gressett TITLE OIL AND GAS INSPECTOR DATE APR 12 1971

CONDITIONS OF APPROVAL, IF ANY:

Cement must be circulated to
 surface behind 7" casing

Notify N.M.O.C.C. in sufficient
 time to witness cementing
 the 7" casing

NEW MEXICO OIL CONSERVATION COMMISSION
WELL LOCATION AND ACREAGE DEDICATION PLAT

Form C-102
Supersedes C-128
Effective 1-1-65

All distances must be from the outer boundaries of the Section.

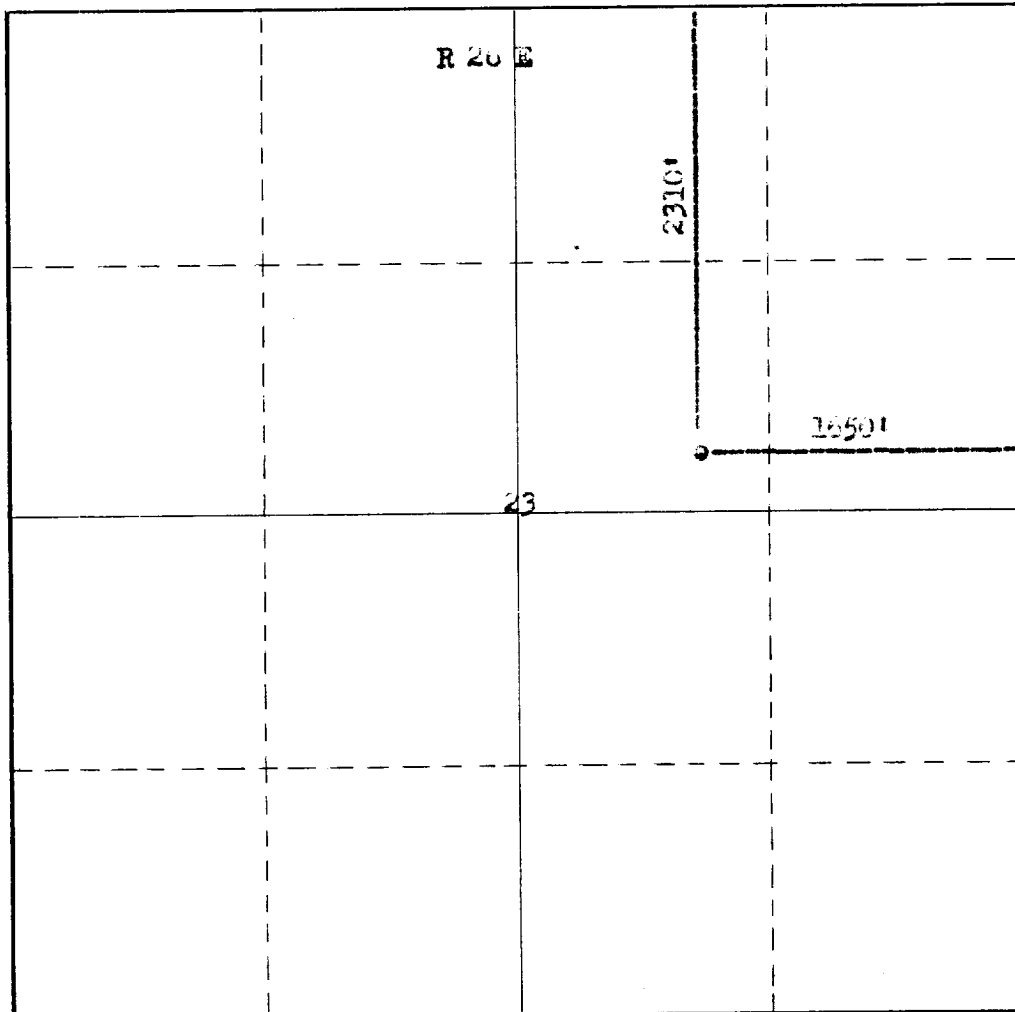
Operator Yates Petroleum Corporation			Lease Gissler A		Well No. 5
Unit Letter G	Section 23	Township 17 South	Range 20 East	County El Paso	
Actual Footage Location of Well:					
2310 feet from the North line and		1650 feet from the East line			
Ground Level Elev. 3492	Producing Formation San Andres	Pool Eagle Creek S.A.	Dedicated Acreage: 40 Acres		

- Outline the acreage dedicated to the subject well by colored pencil or hatchure marks on the plat below.
- If more than one lease is dedicated to the well, outline each and identify the ownership thereof (both as to working interest and royalty).
- If more than one lease of different ownership is dedicated to the well, have the interests of all owners been consolidated by communitization, unitization, force-pooling, etc?

☐ Yes ☐ No If answer is "yes," type of consolidation _____

If answer is "no," list the owners and tract descriptions which have actually been consolidated. (Use reverse side of this form if necessary.) _____

No allowable will be assigned to the well until all interests have been consolidated (by communitization, unitization, forced-pooling, or otherwise) or until a non-standard unit, eliminating such interests, has been approved by the Commission.



CERTIFICATION

I hereby certify that the information contained herein is true and complete to the best of my knowledge and belief.

Eddie M. Mahfood

Name

Eddie M. Mahfood

Position

Engineer

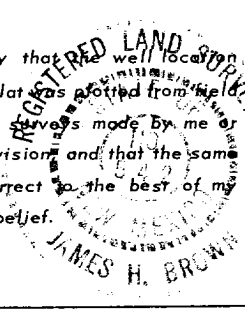
Company

Yates Petroleum Corp.

Date

4-8-71

I hereby certify that the well location shown on this plat was plotted from field notes of actual surveys made by me or under my supervision and that the same is true and correct to the best of my knowledge and belief.



Date Surveyed

April 1 1971

Registered Professional Engineer and/or Land Surveyor

James H. Brown

Certificate No.

542

