

RECEIVED

NEW MEXICO OIL CONSERVATION COMMISSION

MAY 24 1971

O. C. C.
ARTESIA, OFFICE

30-015-20444
Form O-101
Revised 1-1-65

COPIES RECEIVED	7
DISTRIBUTION	
ARTESIA	1
FILE	1
U.S.G.S.	1
LAND OFFICE	
OPERATOR	5

5A. Indicate Type of Lease	
STATE <input type="checkbox"/>	FEE <input checked="" type="checkbox"/>
5. State Oil & Gas Lease No.	

APPLICATION FOR PERMIT TO DRILL, DEEPEN, OR PLUG BACK

a. Type of Work		7. Unit Agreement Name	
b. Type of Well OIL WELL <input checked="" type="checkbox"/> GAS WELL <input type="checkbox"/> OTHER <input type="checkbox"/> DRILL <input checked="" type="checkbox"/> DEEPEN <input type="checkbox"/> PLUG BACK <input type="checkbox"/>		8. Firm or Lease Name Gissler AV	
2. Name of Operator Yates Petroleum Corporation		9. Well No. 6	
3. Address of Operator 207 South 4th Street - Artesia, New Mexico 88210		10. Field and Pool, or Wildcat Eagle Creek S.A.	
4. Location of Well UNIT LETTER F LOCATED 2310 FEET FROM THE North LINE AND 2310 FEET FROM THE West LINE OF SEC. 23 TWP. 17S RGE. 25E NMPM		12. County Eddy	
19. Proposed Depth Approx. 1500'		19A. Formation San Andres	
20. Rotary or C.T. Rotary		21. Elevations (Show whether DF, RT, etc.) 3500' GL	
21A. Kind & Status Plug. Bond Blanket Bond		21B. Drilling Contractor Cactus Drilling Co.	
22. Approx. Date Work will start As soon As Approved			

PROPOSED CASING AND CEMENT PROGRAM

SIZE OF HOLE	SIZE OF CASING	WEIGHT PER FOOT	SETTING DEPTH	SACKS OF CEMENT	EST. TOP
15"	10 3/4" if necessary	32#	210'	Circulate	
9 7/8"	7"	23#	1150'	Circulate	
6 1/8"	4 1/2" Tapered 5 1/2"	9.5#	450') 1050)	Circulate	

It is our intention to drill a 15" hole to approx. 210', set 10 3/4" casing, if necessary, and circulate, then reduce hole to 9 7/8" and drill to approx. 1150', set 7" surface casing and circulate, reduce hole to 6 1/8" and drill to a total depth of approx. 1500'. If production is encountered, a tapered string, of production casing will be set according to NMOCC rules and regulations.

APPROVAL VALID
FOR 90 DAYS UNLESS
DRILLING COMMENCED,
8-24-71

IN ABOVE SPACE DESCRIBE PROPOSED PROGRAM: IF PROPOSAL IS TO DEEPEN OR PLUG BACK, GIVE DATA ON PRESENT PRODUCTION ZONE AND PROPOSED NEW PRODUCTION ZONE, GIVE BLOWOUT PREVENTER PROGRAM, IF ANY.

I hereby certify that the information above is true and complete to the best of my knowledge and belief.

Signed Edna L. Buckley Title Engineer Date 5-20-71

(This space for State Use)

APPROVED BY W. A. Gressett TITLE OIL AND GAS INSPECTOR DATE MAY 24 1971

CONDITIONS OF APPROVAL, IF ANY:

Notify N.M.O.C.C. in sufficient
time to witness cementing

Cement must be circulated to
surface below 10 3/4" + 7" casing

the 7" casing

NE MEXICO OIL CONSERVATION COMMISSIC
WELL LOCATION AND ACREAGE DEDICATION PLAT

Form C-102
Supersedes C-128
Effective 1-1-65

All distances must be from the outer boundaries of the Section.

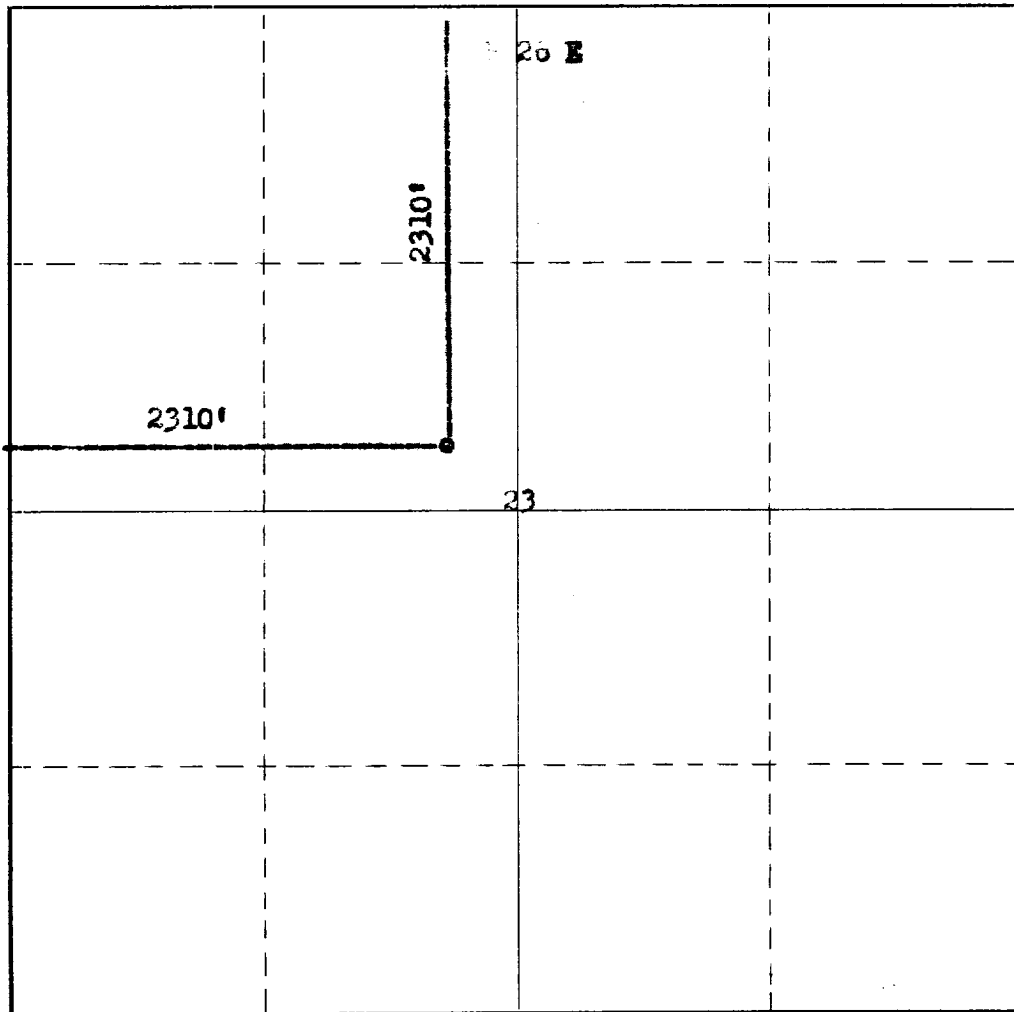
Operator Yates Petroleum Corporation			Lease Gisler AV		Well No. 8
Unit Letter R	Section 23	Township 17 South	Range 25 East	County Eddy	
Actual Footage Location of Well: 2310 feet from the North line and 2310 feet from the East line					
Ground Level Elev. 3500	Producing Formation San Andres		Pool Eagle Creek S.A.		Dedicated Acreage: 40 Acres

1. Outline the acreage dedicated to the subject well by colored pencil or hachure marks on the plat below.
2. If more than one lease is dedicated to the well, outline each and identify the ownership thereof (both as to working interest and royalty).
3. If more than one lease of different ownership is dedicated to the well, have the interests of all owners been consolidated by communitization, unitization, force-pooling, etc?

☐ Yes ☐ No If answer is "yes," type of consolidation _____

If answer is "no," list the owners and tract descriptions which have actually been consolidated. (Use reverse side of this form if necessary.) _____

No allowable will be assigned to the well until all interests have been consolidated (by communitization, unitization, forced-pooling, or otherwise) or until a non-standard unit, eliminating such interests, has been approved by the Commission.



CERTIFICATION

I hereby certify that the information contained herein is true and complete to the best of my knowledge and belief.

Eddie M. Mahfood
Name
Eddie M. Mahfood

Position
Engineer

Company
Yates Petroleum Corp.

Date
5-20-71

I hereby certify that the well location shown on this plat was plotted from field notes of actual surveys made by me or under my supervision, and that the same is true and correct to the best of my knowledge and belief.

Date Surveyed

APR 11 2, 1971
Registered Professional Engineer
and/or Land Surveyor

James H. Brown
Certificate No.
542

0 330 660 990 1320 1650 1980 2310 2640 2000 1500 1000 500