

NO. OF COPIES RECEIVED	7
DISTRIBUTION	
SANTA FE	1
FILE	1
U.S.G.S.	2
LAND OFFICE	
OPERATOR	

RECEIVED
NEW MEXICO OIL CONSERVATION COMMISSION
MAY 25 1971
O. C. C.
ARTESIA, OFFICE

30-015-20447
Form C-101
Revised 1-1-65

5A. Indicate Type of Lease STATE <input type="checkbox"/> FEE <input type="checkbox"/>
5. State Oil & Gas Lease No.
7. Unit Agreement Name
8. Farm or Lease Name MCCAW LT
9. Well No. 2
10. Field and Pool, or Wildcat Unit MCCAW UNIT
12. County MCCAW
19. Proposed Depth Approx. 1500'
19A. Formation San Andres
20. Rotary or C.T. Rotary
21. Elevations (Show whether DI, RT, etc.) 3475' GR
21A. Kind & Status Plug. Bond Blanket Bond
21B. Drilling Contractor Cactus Drilling Co.
22. Approx. Date Work will start As soon as possible

APPLICATION FOR PERMIT TO DRILL, DEEPEN, OR PLUG BACK

1a. Type of Work DRILL <input type="checkbox"/> DEEPEN <input type="checkbox"/> PLUG BACK <input type="checkbox"/>
b. Type of Well OIL WELL <input type="checkbox"/> GAS WELL <input type="checkbox"/> OTHER <input type="checkbox"/> SINGLE ZONE <input type="checkbox"/> MULTIPLE ZONE <input type="checkbox"/>
2. Name of Operator MCCAW Petroleum Corporation
3. Address of Operator 207 South 1st Street - Artesia, New Mexico 88210
4. Location of Well UNIT LETTER A1 LOCATED 2310 FEET FROM THE NORTH LINE AND 350 FEET FROM THE East LINE OF SEC. 14 TWP. 17S RGE. 25E NMDM
19. Proposed Depth Approx. 1500'
19A. Formation San Andres
20. Rotary or C.T. Rotary
21. Elevations (Show whether DI, RT, etc.) 3475' GR
21A. Kind & Status Plug. Bond Blanket Bond
21B. Drilling Contractor Cactus Drilling Co.
22. Approx. Date Work will start As soon as possible

23.

PROPOSED CASING AND CEMENT PROGRAM

SIZE OF HOLE	SIZE OF CASING	WEIGHT PER FOOT	SETTING DEPTH	SACKS OF CEMENT	EST. TOP
15"	10 3/4"	32#	210'	Circulate	
9 7/8"	7"	23#	1150'	Circulate	
6 1/8"	4 1/2") Tapered 5 1/2")	9.5# 15.5#	450') 1050')	Circulate	

It is our intention to drill a 15" hole to approx. 210', set 10 3/4" casing, if necessary, and circulate, then reduce hole to 9 7/8" and drill to approx. 1150', set 7" surface casing and circulate, reduce hole to 6 1/8" and drill to a total depth of approx. 1500'. If production is encountered, a tapered string, of production casing will be set according to NMOC rules and regulations.

APPROVAL VALID
FOR 90 DAYS UNLESS
DRILLING COMMENCED,

EXPIRES 8-25-71

IN ABOVE SPACE DESCRIBE PROPOSED PROGRAM: IF PROPOSAL IS TO DEEPEN OR PLUG BACK, GIVE DATA ON PRESENT PRODUCTIVE ZONE AND PROPOSED NEW PRODUCTIVE ZONE. GIVE BLOWOUT PREVENTER PROGRAM, IF ANY.

I hereby certify that the information above is true and complete to the best of my knowledge and belief.

Signed Rayford Yates Title Engineer Date 5-24-71
(This space for State Use)

APPROVED BY W. A. Gressett TITLE OIL AND GAS INSPECTOR DATE MAY 25 1971

CONDITIONS OF APPROVAL, IF ANY:
Cement must be circulated to surface behind 10 3/4" casing

Notify N.M.O.C.C. in sufficient time to witness cementing the 7" casing

NEW MEXICO OIL CONSERVATION COMMISSION
WELL LOCATION AND ACREAGE DEDICATION PLAT

Form C-102
Supersedes C-128
Effective 1-1-65

All distances must be from the outer boundaries of the Section.

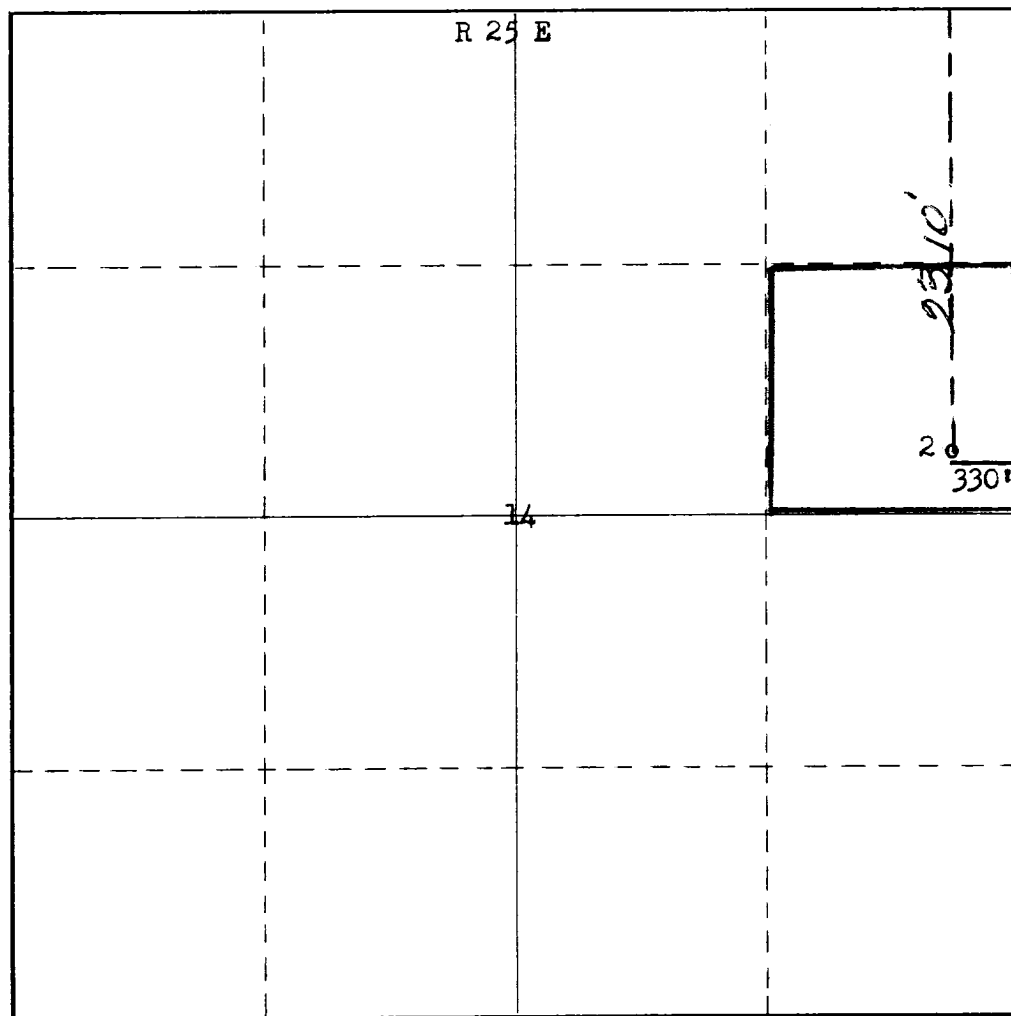
Operator Yates Petroleum Corporation			Lease McCaw BT		Well No. 2
Unit Letter H	Section 14	Township 17 S	Range 25 E	County Eddy	
Actual Footage Location of Well:					
2310 feet from the North line and		330 feet from the East line			
Ground Level Elev. 3475	Producing Formation San Andres	Pool Und. Eagle Creek S.A.	Dedicated Acreage: 40 Acres		

1. Outline the acreage dedicated to the subject well by colored pencil or hachure marks on the plat below.
2. If more than one lease is dedicated to the well, outline each and identify the ownership thereof (both as to working interest and royalty).
3. If more than one lease of different ownership is dedicated to the well, have the interests of all owners been consolidated by communitization, unitization, force-pooling, etc?

☐ Yes ☐ No If answer is "yes," type of consolidation _____

If answer is "no," list the owners and tract descriptions which have actually been consolidated. (Use reverse side of this form if necessary.) _____

No allowable will be assigned to the well until all interests have been consolidated (by communitization, unitization, forced-pooling, or otherwise) or until a non-standard unit, eliminating such interests, has been approved by the Commission.



CERTIFICATION

I hereby certify that the information contained herein is true and complete to the best of my knowledge and belief.

Peyton Yates
Name
Peyton Yates
Position
Engineer
Company
Yates Pet. Corporation
Date
5-24-71

I hereby certify that the well location shown on this plat was plotted from field notes of actual surveys made by me or under my supervision, and that the same is true and correct to the best of my knowledge and belief.

Date Surveyed
May 22 nd 1971
Registered Professional Engineer
and/or Land Surveyor

James H. Brown
Certificate No. **542**