

UNITED STATES
DEPARTMENT OF THE INTERIOR
GEOLOGICAL SURVEY

APPLICATION FOR PERMIT TO DRILL, DEEPEN, OR PLUG BACK

1a. TYPE OF WORK

DRILL ☒DEEPEN ☐PLUG BACK ☐

b. TYPE OF WELL

OIL
WELL ☒GAS
WELL ☐OTHER ☐SINGLE
ZONE ☐MULTIPLE
ZONE ☐

2. NAME OF OPERATOR

Yates Petroleum Corporation

3. ADDRESS OF OPERATOR

207 South 4th Street - Artesia, New Mexico 88210

4. LOCATION OF WELL (Report location clearly and in accordance with any State requirements.)*

At surface

330' FSL & 330' FEL of Sec. 22-17S-25E

At proposed prod. zone

14. DISTANCE IN MILES AND DIRECTION FROM NEAREST TOWN OR POST OFFICE*

Approx. 5 miles from Artesia, New Mexico (West)

10. DISTANCE FROM PROPOSED*

LOCATION TO NEAREST

PROPERTY OR LEASE LINE, FT.

(Also to nearest drig. unit line, if any)

18. DISTANCE FROM PROPOSED LOCATION*

TO NEAREST WELL, DRILLING, COMPLETED,
OR APPLIED FOR, ON THIS LEASE, FT.

16. NO. OF ACRES IN LEASE

19. PROPOSED DEPTH

Approx. 1500'

21. ELEVATIONS (Show whether DF, RT, GR, etc.)

3511' GL

23.

PROPOSED CASING AND CEMENTING PROGRAM

SIZE OF HOLE	SIZE OF CASING	WEIGHT PER FOOT	SETTING DEPTH	QUANTITY OF CEMENT
13 3/8"	10 3/4"	32#	210'	Circulate
9 7/8"	7"	20#	1150'	Circulate
6 1/8"	4 1/2") Tapered	9.5#	450')	Circulate
	5 1/2")	14#	1050')	

It is our intention to drill a 13 3/8" hole to approx. 210', set 10 3/4" casing, if necessary, and circulate, then reduce hole to 9 7/8" and drill to approx. 1150', set 7" surface casing and circulate, reduce hole to 6 1/8" and drill to a total depth of approx. 1500'. If production is encountered, a tapered string of production casing will be set according to USGS rules and regulations.

RECEIVED

JUN 10 1971

RECEIVED

JUN 8 1971

O. C. C.

U. S. GEOLOGICAL SURVEY

IN ABOVE SPACE DESCRIBE PROPOSED PROGRAM: If proposal is to deepen or plug back, give data on present production zone and proposed new production zone. If proposal is to drill or deepen directionally, give pertinent data on subsurface locations and measured and true vertical depths. Give blowout preventer program, if any.

24.

SIGNED

TITLE

Owner

DATE

6-8-71

(This space for Federal or State office use)

PERMIT NO.

APPROVAL DATE

APPROVED
JUN - 9 1971
R. L. BECKMAN
ACTING DISTRICT ENGINEERTITLED OPERATIONS
IF OPERATIONS
WITHIN 3 MONTHS.

*See Instructions On Reverse Side

DEEP-SEALED WATER BASIN
10%
CEMENT BEHIND THE
CASING MUST BE CIRCULATED
7"NOTIFY USGS IN SUFFICIENT TIME TO
WITNESS CEMENTING THE 7" CASING

NEW MEXICO OIL CONSERVATION COMMISSION
WELL LOCATION AND ACREAGE DEDICATION PLAT

Form C-102
Supersedes C-128
Effective 1-1-65

All distances must be from the outer boundaries of the Section.

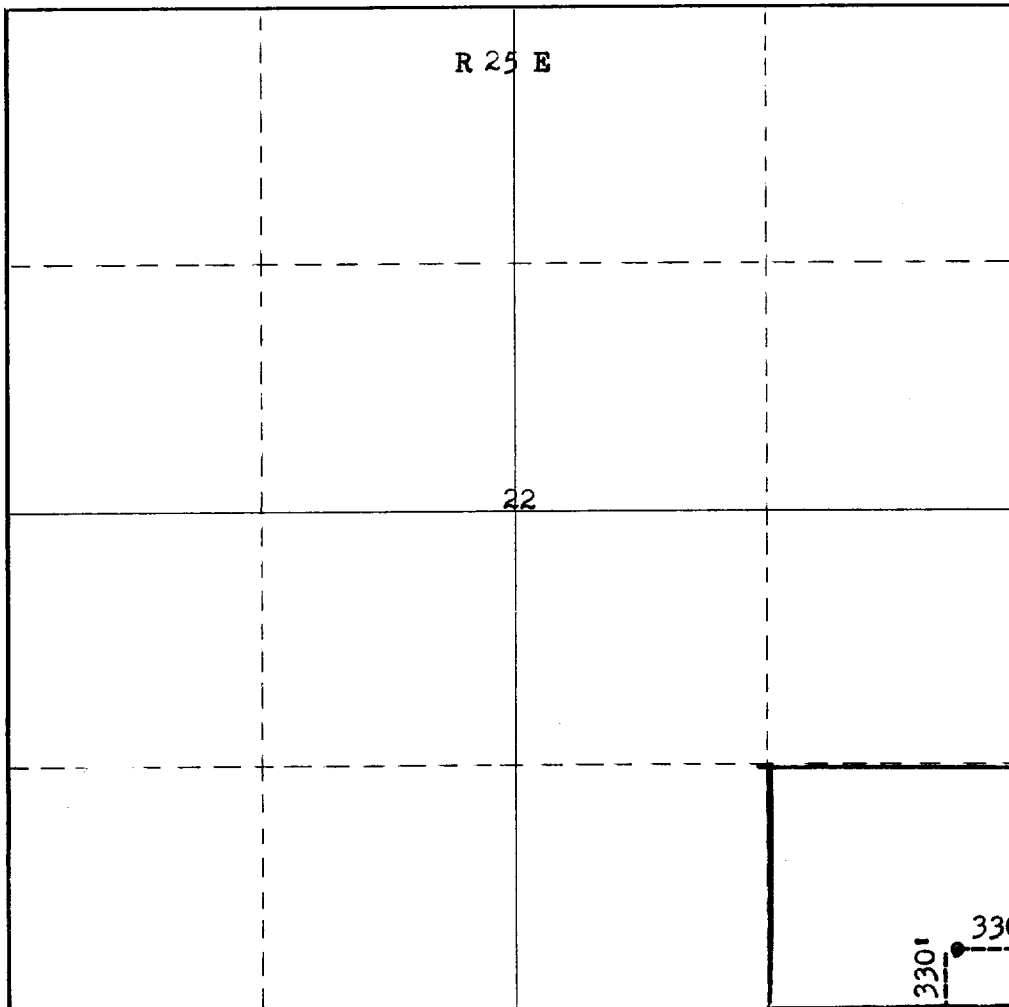
Operator Yates Petroleum Corp.			Lease Federal BW			Well No. 1		
Unit Letter P	Section 22	Township 17 South	Range 25 East	County Eddy				
Actual Footage Location of Well: 330 feet from the South line and 330 feet from the East line								
Ground Level Elev. 3511'		Producing Formation San Andres		Pool Und. Eagle Creek S. A.			Dedicated Acreage: 40 Acres	

1. Outline the acreage dedicated to the subject well by colored pencil or hachure marks on the plat below.
2. If more than one lease is dedicated to the well, outline each and identify the ownership thereof (both as to working interest and royalty).
3. If more than one lease of different ownership is dedicated to the well, have the interests of all owners been consolidated by communitization, unitization, force-pooling, etc?

☐ Yes ☐ No If answer is "yes," type of consolidation _____

If answer is "no," list the owners and tract descriptions which have actually been consolidated. (Use reverse side of this form if necessary.) _____

No allowable will be assigned to the well until all interests have been consolidated (by communitization, unitization, forced-pooling, or otherwise) or until a non-standard unit, eliminating such interests, has been approved by the Commission.



CERTIFICATION

I hereby certify that the information contained herein is true and complete to the best of my knowledge and belief.

Name
Eddie M. Mahfood
Position
Engineer
Company
Yates Petroleum Corp.
Date
6-8-71

RECEIVED

I hereby certify that the information shown on this plat was plotted from field notes of **JAMES H. BROWN** under my supervision and that the information is true and correct to the best of my knowledge and belief.

Date Surveyed
June 3rd 1971
Registered Professional Engineer and/or Land Surveyor

Certificate No.
542

T
17
S

