

UNITED STATES  
DEPARTMENT OF THE INTERIOR  
GEOLOGICAL SURVEY

30-015-20455

5. LEASE DESIGNATION AND SERIAL NO.

RM 0219603-A

6. IF INDIAN, ALLOTTEE OR TRIBE NAME

7. UNIT AGREEMENT NAME

8. FARM OR LEASE NAME

Federal BN

9. WELL NO.

2

10. FIELD AND POOL, OR WILDCAT

Eagle Creek S.A.

11. SEC., T., R., M., OR BLK.

AND SURVEY OR AREA  
Sec. 22-17S-25E

Unit O NMPM

12. COUNTY OR PARISH

Eddy

13. STATE

N.Mex.

## APPLICATION FOR PERMIT TO DRILL, DEEPEN, OR PLUG BACK

1a. TYPE OF WORK

DRILL ☒DEEPEN ☐PLUG BACK ☐

b. TYPE OF WELL

OIL  
WELL ☒GAS  
WELL ☐OTHER ☐

JUN 10 1971

MULTIPLE  
ZONE ☐

2. NAME OF OPERATOR

Yates Petroleum Corporation

O.C.C.

3. ADDRESS OF OPERATOR

ARTESIA, OFFICE

207 South 4th Street - Artesia, New Mexico 88210

4. LOCATION OF WELL (Report location clearly and in accordance with any State requirements.)\*

At surface

330' FSL &amp; 1650' FEL of Sec. 22-17S-25E

At proposed prod. zone

14. DISTANCE IN MILES AND DIRECTION FROM NEAREST TOWN OR POST OFFICE\*

Approx. 5 miles west of Artesia, New Mexico

15. DISTANCE FROM PROPOSED\*

LOCATION TO NEAREST  
PROPERTY OR LEASE LINE, FT.  
(Also to nearest drlg. unit line, if any)

16. NO. OF ACRES IN LEASE

17. NO. OF ACRES ASSIGNED  
TO THIS WELL

40

18. DISTANCE FROM PROPOSED LOCATION\*  
TO NEAREST WELL, DRILLING, COMPLETED,  
OR APPLIED FOR, ON THIS LEASE, FT.19. PROPOSED DEPTH  
Approx. 1500'

20. ROTARY OR CABLE TOOLS

Rotary

21. ELEVATIONS (Show whether DF, RT, GR, etc.)

3521' GL

22. APPROX. DATE WORK WILL START\*

As soon as approved

23.

## PROPOSED CASING AND CEMENTING PROGRAM

SIZE OF HOLE	SIZE OF CASING	WEIGHT PER FOOT	SETTING DEPTH	QUANTITY OF CEMENT
13 3/8"	10 3/4"	32#	210'	Circulate
9 7/8"	7"	20#	1150'	Circulate
6 1/8"	4 1/2" ) 5 1/2" ) Tapered	9.5# 14#	450' ) 1150' )	Circulate

It is our intention to drill a 13 3/8" hole to approx. 210', set 10 3/4" casing, if necessary, and circulate, then reduce hole to 9 7/8" and drill to approx. 1150', set 7" surface casing and circulate, reduce hole to 6 1/8" and drill to a total depth of approx. 1500'. If production is encountered, a tapered string of production casing will be set according to USGS rules and regulations.

RECEIVED

JUN 8 1971

U. S. GEOLOGICAL SURVEY  
ARTESIA, NEW MEXICO

IN ABOVE SPACE DESCRIBE PROPOSED PROGRAM: If proposal is to deepen or plug back, give data on present productive zone and proposed new productive zone. If proposal is to drill or deepen directionally, give pertinent data on subsurface locations and measured and true vertical depths. Give blowout preventer program, if any.

24.

SIGNED

TITLE

Engineer

DATE

6-8-71

(This space for Federal or State office use)

PERMIT NO.

APPROVED BY  
CONDITIONS OF APPROVAL, IF ANY:

JUN - 9 1971

H. L. BECKMAN  
ACTING DISTRICT ENGINEERTHIS APPROVAL IS RESCINDED IF OPERATIONS  
ARE NOT COMMENCED WITHIN 3 MONTHS.  
EXPIRES SEP - 9 1971

\*See Instructions On Reverse Side

DECLARED WATER CASE  
10 3/4"  
7"  
CEMENT BEHIND THE  
CASING MUST BE CIRCULATEDNOTIFY USGS IN SUFFICIENT TIME TO  
WITNESS CEMENTING THE 7" PIPING

NE., MEXICO OIL CONSERVATION COMMISSION  
WELL LOCATION AND ACREAGE DEDICATION PLAT

Form C-102  
Supersedes C-128  
Effective 1-1-65

All distances must be from the outer boundaries of the Section.

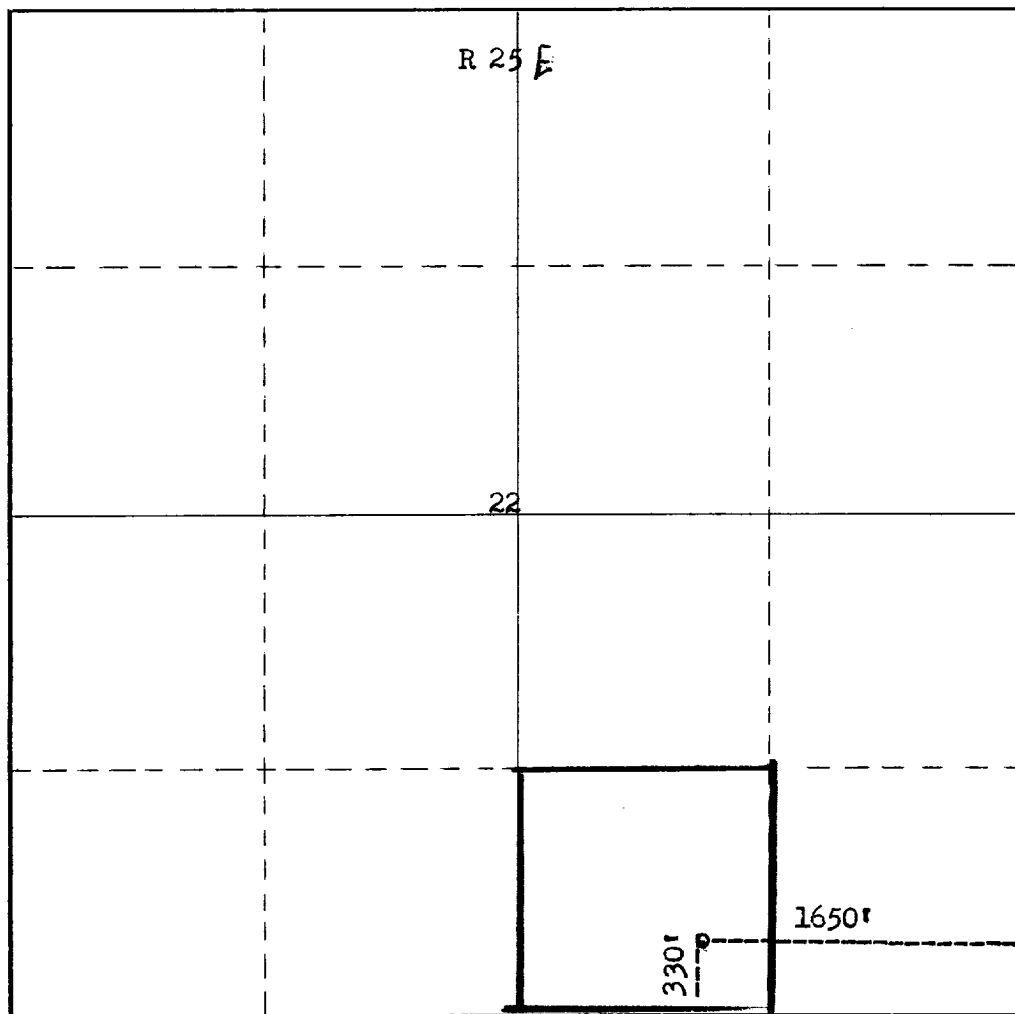
Operator <b>Yates Petroleum Corp.</b>		Lease <b>Federal BW</b>		Well No. <b>2</b>
Unit Letter <b>0</b>	Section <b>22</b>	Township <b>17 South</b>	Range <b>25 EAST</b>	County <b>Eddy</b>
Actual Footage Location of Well: <b>330</b> feet from the <b>South</b> line and <b>1650</b> feet from the <b>East</b> line				
Ground Level Elev. <b>3521</b>	Producing Formation <b>San Andres</b>	Pool <b>Und. Eagle Creek S.A.</b>	Dedicated Acreage: <b>40</b> Acres	

1. Outline the acreage dedicated to the subject well by colored pencil or hachure marks on the plat below.
2. If more than one lease is dedicated to the well, outline each and identify the ownership thereof (both as to working interest and royalty).
3. If more than one lease of different ownership is dedicated to the well, have the interests of all owners been consolidated by communitization, unitization, force-pooling, etc?

☐ Yes ☐ No If answer is "yes," type of consolidation \_\_\_\_\_

If answer is "no," list the owners and tract descriptions which have actually been consolidated. (Use reverse side of this form if necessary.) \_\_\_\_\_

No allowable will be assigned to the well until all interests have been consolidated (by communitization, unitization, forced-pooling, or otherwise) or until a non-standard unit, eliminating such interests, has been approved by the Commission.



CERTIFICATION

I hereby certify that the information contained herein is true and complete to the best of my knowledge and belief.

*Eddie M. Mahfood*

Name  
**Eddie M. Mahfood**  
Position  
**Engineer**  
Company  
**Yates Petroleum Corp.**

Date  
**6-8-71**

**RECEIVED**  
JUN 8 1971  
U. S. GEOLOGICAL SURVEY  
ARRESTA, NEW MEXICO  
I hereby certify that the well location shown on this plat was plotted from field notes of George Surveys made by me or under my supervision and that the same is true to the best of my knowledge and belief.

Date Surveyed  
**June 4, 1971**

Registered Professional Engineer and/or Land Surveyor

*James H. Brown*  
Certificate No.  
**542**

T  
17  
S