

NO. OF COPIES RECEIVED	5
DISTRIBUTION	
SANTA FE	1
FILE	1
U.S.G.S.	2
LAND OFFICE	
OPERATOR	1

**RECEIVED**  
NEW MEXICO OIL CONSERVATION COMMISSION

JUN 24 1971

**O. C. C.**  
ARTESIA, OFFICE

30-015-20461  
Form C-101  
Revised 1-1-65

5A. Indicate Type of Lease	
STATE <input type="checkbox"/>	FEE <input checked="" type="checkbox"/>
5. State Oil & Gas Lease No.	

**APPLICATION FOR PERMIT TO DRILL, DEEPEN, OR PLUG BACK**

1a. Type of Work		7. Unit Agreement Name	
b. Type of Well OIL WELL <input checked="" type="checkbox"/> GAS WELL <input type="checkbox"/> OTHER <input type="checkbox"/>		8. Farm or Lease Name Jackson Estate BY	
2. Name of Operator Yates Petroleum Corporation		9. Well No. 1	
3. Address of Operator 107 South 4th Street - Artesia, New Mexico 88210		10. Field and Pool, or Wildcat Und. Magic Creek S.A.	
4. Location of Well UNIT LETTER K LOCATED 1650 FEET FROM THE South LINE AND 2310 FEET FROM THE West LINE OF SEC. 22 TWP. 17S RGE. 25E NMPM		12. County Eddy	
19. Proposed Depth Approx. 1500'		19A. Formation San Andres	
20. Rotary or C.T. Rotary		21. Elevations (Show whether DF, RT, etc.) 3534' GL	
21A. Kind & Status Plug. Bond Blanket		21B. Drilling Contractor Cactus Drilling Co.	
22. Approx. Date Work will start As soon as approved			

**PROPOSED CASING AND CEMENT PROGRAM**

SIZE OF HOLE	SIZE OF CASING	WEIGHT PER FOOT	SETTING DEPTH	SACKS OF CEMENT	EST. TOP
13 3/8"	10 3/4"	32#	210'	Circulate	
9 7/8"	7"	23#	1150'	Circulate	
6 1/8"	4 1/2" ) Tapered 5 1/2" )	9.5# 14#	450' } 1050' }	Circulate	

It is our intention to drill a 13 3/8" hole to approx. 210', set 10 3/4" casing if necessary and circulate, then reduce hole to 9 7/8" and drill to approximately 1150', set 7" surface casing and circulate, reduce hole to 6 1/8" and drill to a total depth of approximately 1500'. If production is encountered a tapered string of production casing will be set according to NMOCC rules and regulations.

APPROVAL VALID  
FOR 90 DAYS UNLESS  
DRILLING COMMENCED,

EXPIRES 9-24-71

IN ABOVE SPACE DESCRIBE PROPOSED PROGRAM; IF PROPOSAL IS TO DEEPEN OR PLUG BACK, GIVE DATA ON PRESENT PRODUCTIVE ZONE AND PROPOSED NEW PRODUCTIVE ZONE. GIVE BLOWOUT PREVENTER PROGRAM, IF ANY.

I hereby certify that the information above is true and complete to the best of my knowledge and belief.

Signed Eddie L. Huelsbeck Title Engineer Date 6-23-71

(This space for State Use)

APPROVED BY W. A. Gussert TITLE OIL AND GAS INSPECTOR DATE JUN 24 1971

CONDITIONS OF APPROVAL, IF ANY:

Cement must be circulated to  
surface and 10 3/4" casing

Notify N.M.O.C.C. in sufficient  
time to witness cementing  
the 7" casing

NEW MEXICO OIL CONSERVATION COMMISSION  
WELL LOCATION AND ACREAGE DEDICATION PLAT

Form C-102  
Supersedes C-128  
Effective 1-1-65

All distances must be from the outer boundaries of the Section.

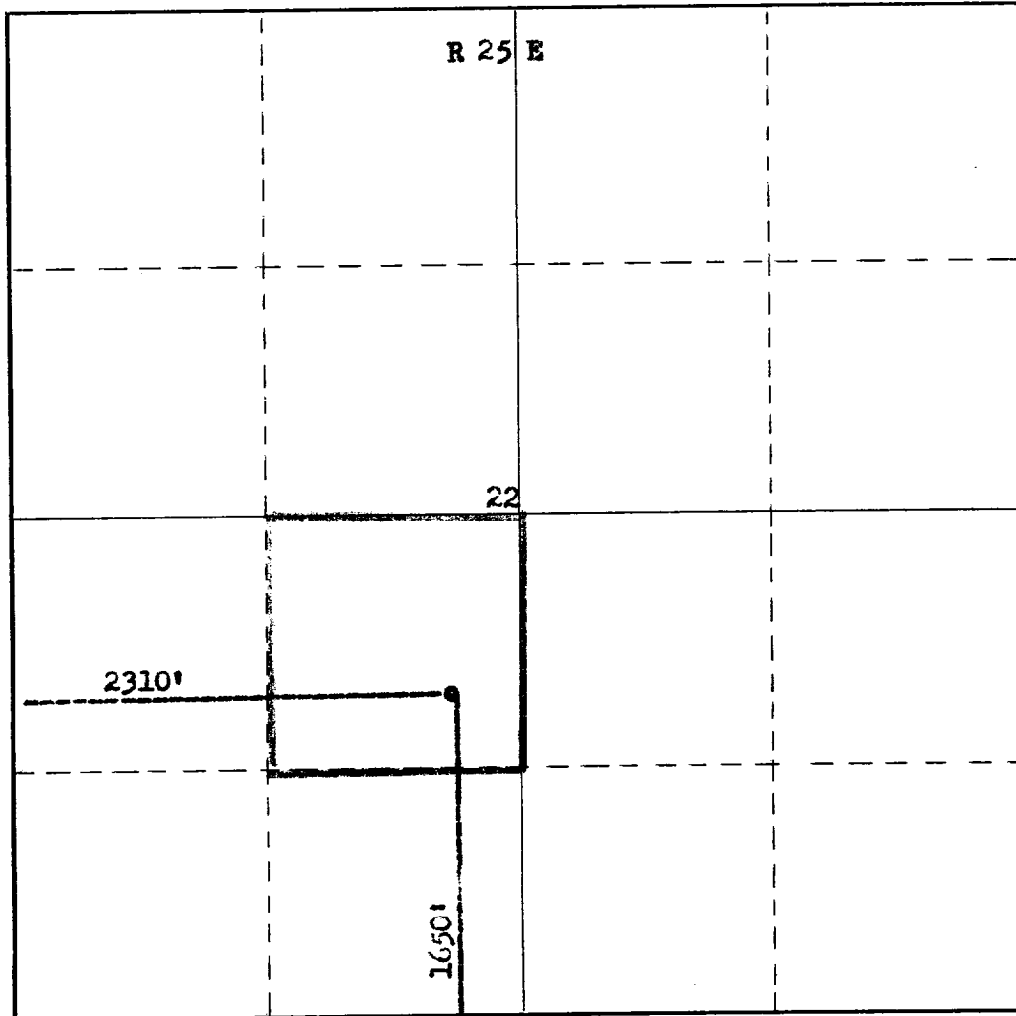
Operator <b>Yates Petroleum Corporation</b>		Lease <b>Jackson Estate BY</b>		Well No. <b>1</b>
Unit Letter <b>K</b>	Section <b>22</b>	Township <b>17 South</b>	Range <b>25 East</b>	County <b>Eddy</b>
Actual Footage Location of Well: <b>1650</b> feet from the <b>South</b> line and <b>2310</b> feet from the <b>West</b> line				
Ground Level Elev. <b>3534</b>	Producing Formation <b>San Andres</b>	Pool <b>Und. Eagle Creek S.A.</b>	Dedicated Acreage: <b>40</b> Acres	

1. Outline the acreage dedicated to the subject well by colored pencil or hachure marks on the plat below.
2. If more than one lease is dedicated to the well, outline each and identify the ownership thereof (both as to working interest and royalty).
3. If more than one lease of different ownership is dedicated to the well, have the interests of all owners been consolidated by communitization, unitization, force-pooling, etc?

☐ Yes ☐ No If answer is "yes," type of consolidation \_\_\_\_\_

If answer is "no," list the owners and tract descriptions which have actually been consolidated. (Use reverse side of this form if necessary.) \_\_\_\_\_

No allowable will be assigned to the well until all interests have been consolidated (by communitization, unitization, forced-pooling, or otherwise) or until a non-standard unit, eliminating such interests, has been approved by the Commission.



CERTIFICATION

I hereby certify that the information contained herein is true and complete to the best of my knowledge and belief.

*Eddie M. Mahfood*

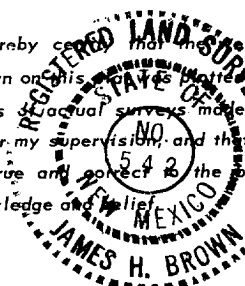
Name  
**Eddie M. Mahfood**

Position  
**Engineer**

Company  
**Yates Petroleum Corp.**

Date  
**6-23-71**

I hereby certify that the well location shown on this plat was plotted from field notes of actual surveys made by me or under my supervision, and that the same is true and correct to the best of my knowledge and belief.



Date Surveyed  
**June 22 1971**

Registered Professional Engineer  
and/or Land Surveyor

*James H. Brown*

Certificate No.

**542**

T  
17  
S