

NO. OF COPIES RECEIVED	5
DISTRIBUTION	
CANAL FE	
FILE	
U.S.G.S.	
CANAL OFFICE	
OPERATOR	

RECEIVED NEW MEXICO OIL CONSERVATION COMMISSION

JUN 24 1971

O. C. C.
ARTESIA, OFFICE

Form C-101
Revised 1-1-65

5A. Indicate Type of Lease
STATE <input type="checkbox"/> FEE <input checked="" type="checkbox"/>
5. State Oil & Gas Lease No.
7. Unit Agreement Name
8. Farm or Lease Name
Jackson Estate BY
9. Well No.
2
10. Field and Pool, or Wildcat Unit.
Eagle Creek S.A.
12. County
Eddy

APPLICATION FOR PERMIT TO DRILL, DEEPEN, OR PLUG BACK

1a. Type of Work	DRILL <input checked="" type="checkbox"/> DEEPEN <input type="checkbox"/> PLUG BACK <input type="checkbox"/>
b. Type of Well	OIL WELL <input checked="" type="checkbox"/> GAS WELL <input type="checkbox"/> OTHER <input type="checkbox"/> SINGLE ZONE <input type="checkbox"/> MULTIPLE ZONE <input type="checkbox"/>
2. Name of Operator	Yates Petroleum Corporation
3. Address of Operator	207 South 4th Street - Artesia, New Mexico 88210
4. Location of Well	UNIT LETTER F LOCATED 2310 FEET FROM THE North LINE AND 2310 FEET FROM THE West LINE OF SEC. 22 TWP. 17S RGE. 25E NMPM
19. Proposed Depth	Approx. 1500'
19A. Formation	San Andres
20. Rotary or C.T.	Rotary
21. Elevations (Show whether DE, RT, etc.)	3533' GL
21A. Kind & Status Plug. Bond	Blanket
21B. Drilling Contractor	Cactus Drilling Co.
22. Approx. Date Work will start	As soon as approved

23.

PROPOSED CASING AND CEMENT PROGRAM

SIZE OF HOLE	SIZE OF CASING	WEIGHT PER FOOT	SETTING DEPTH	SACKS OF CEMENT	EST. TOP
13 3/8"	10 3/4"	32#	210'	Circulate	
9 7/8"	7"	23#	1150'	Circulate	
6 1/8"	4 1/2") Tapered 5 1/2")	9.5# 14#	450') 1050')	Circulate	

It is our intention to drill a 13 3/8" hole to approximately 210', set 10 3/4" casing if necessary and circulate, then reduce hole to 9 7/8" and drill to approximately 1150', set 7" surface casing and circulate, reduce hole to 6 1/8" and drill to a total depth of approximately 1500'. If production is encountered a tapered string of production casing will be set according to NMOCC rules and regulations.

APPROVAL VALID
FOR 90 DAYS UNLESS
DRILLING COMMENCED,
EXPIRES 9-24-71

IN ABOVE SPACE DESCRIBE PROPOSED PROGRAM: IF PROPOSAL IS TO DEEPEN OR PLUG BACK, GIVE DATA ON PRESENT PRODUCTIVE ZONE AND PROPOSED NEW PRODUCTIVE ZONE. GIVE BLOWOUT PREVENTER PROGRAM, IF ANY.

I hereby certify that the information above is true and complete to the best of my knowledge and belief.

Signed Eddy M. Huchard Title Engineer Date 6-23-71

(This space for State Use)

APPROVED BY W. A. Grossert TITLE OIL AND GAS INSPECTOR DATE JUN 24 1971

CONDITIONS OF APPROVAL, IF ANY:

Cement must be circulated to surface behind 10 3/4" & 7" casing

Notify N.M.O.C.C. in sufficient time to witness cementing the 7" casing

NEW MEXICO OIL CONSERVATION COMMISSION
WELL LOCATION AND ACREAGE DEDICATION PLAT

Form C-102
Supersedes C-128
Effective 1-1-65

All distances must be from the outer boundaries of the Section.

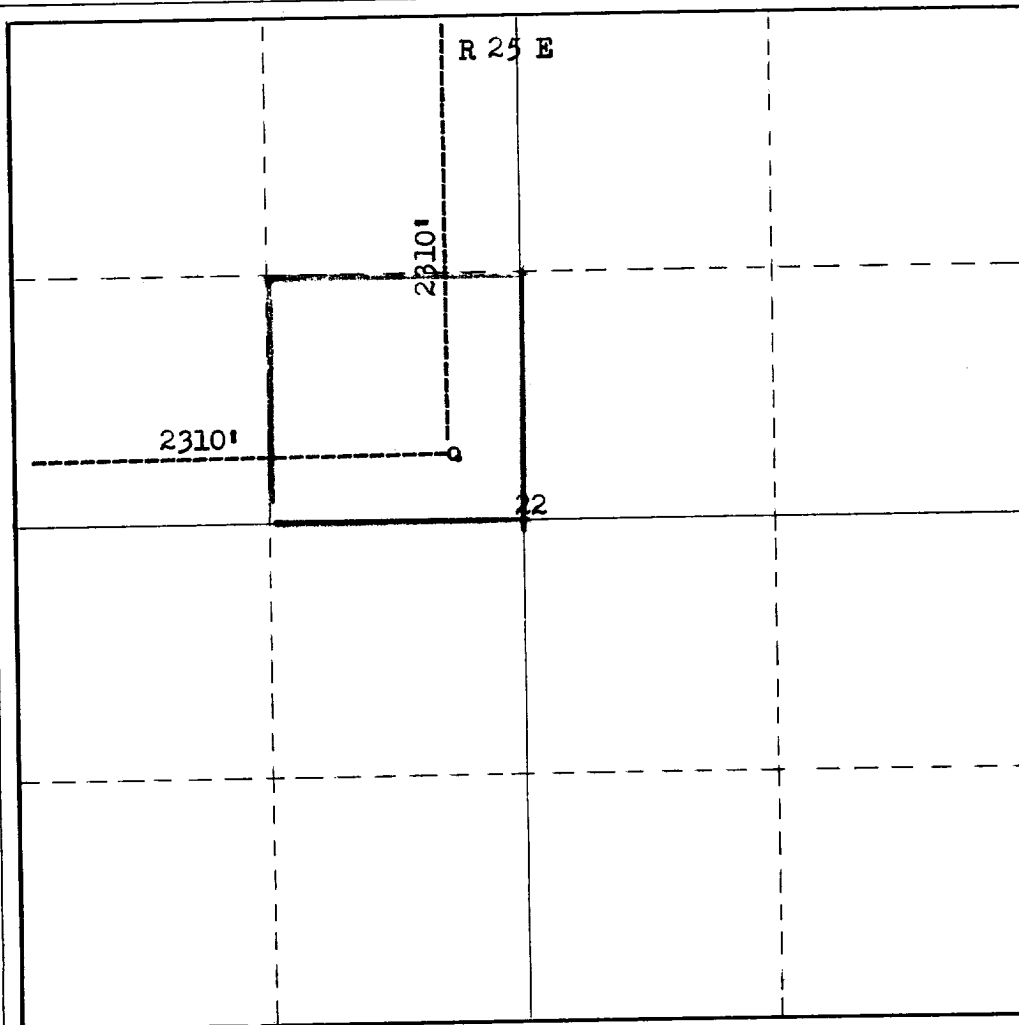
Operator Yates Petroleum Corporation			Lease Jackson Estate BY		Well No. 2
Unit Letter F	Section 22	Township 17 N South	Range 25 East	County Eddy	
Actual Footage Location of Well: <div style="display: flex; justify-content: space-between;"> 2310 feet from the North line and 2310 feet from the West line </div>					
Ground Level Elev. 3533	Producing Formation San Andres	Pool Und. Eagle Creek S.A.		Dedicated Acreage: 40 Acres	

1. Outline the acreage dedicated to the subject well by colored pencil or hachure marks on the plat below.
2. If more than one lease is dedicated to the well, outline each and identify the ownership thereof (both as to working interest and royalty).
3. If more than one lease of different ownership is dedicated to the well, have the interests of all owners been consolidated by communitization, unitization, force-pooling, etc?

☐ Yes ☐ No If answer is "yes," type of consolidation _____

If answer is "no," list the owners and tract descriptions which have actually been consolidated. (Use reverse side of this form if necessary.) _____

No allowable will be assigned to the well until all interests have been consolidated (by communitization, unitization, forced-pooling, or otherwise) or until a non-standard unit, eliminating such interests, has been approved by the Commission.



CERTIFICATION

I hereby certify that the information contained herein is true and complete to the best of my knowledge and belief.

Eddie M. Manfood
Name

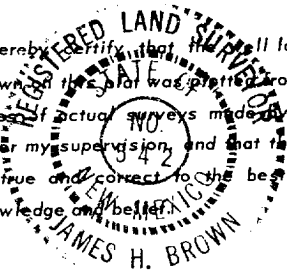
Eddie M. Manfood

Position
Engineer

Company
Yates Petroleum Corp.

Date
6-23-71

I hereby certify that the well location shown on this plat was plotted from field notes of actual surveys made by me or under my supervision, and that the same is true and correct to the best of my knowledge and belief.



Date Surveyed
June 22, 1971

Registered Professional Engineer
and/or Land Surveyor

James H. Brown
Certificate No.

542

