

UNITED STATES
DEPARTMENT OF THE INTERIOR
GEOLOGICAL SURVEY

APPLICATION FOR PERMIT TO DRILL, DEEPEN, OR PLUG BACK

1A. TYPE OF WORK

DRILL ☒DEEPEN ☐PLUG BACK ☐

B. TYPE OF WELL

OIL
WELL ☒GAS
WELL ☐

OTHER

SINGLE
ZONE ☐MULTIPLE
ZONE ☐

2. NAME OF OPERATOR

Yates Petroleum Corporation

3. ADDRESS OF OPERATOR

207 South 4th Street - Artesia, New Mexico 83210

4. LOCATION OF WELL (Report location clearly and in accordance with any State requirements.)*

At surface

330' FSL & 990' FWL of Sec. 22-17S-25E

At proposed prod. zone

14. DISTANCE IN MILES AND DIRECTION FROM NEAREST TOWN OR POST OFFICE*

Approx 5 miles/ from Artesia, New Mexico

15. DISTANCE FROM PROPOSED*

330

LOCATION TO NEAREST
PROPERTY OR LEASE LINE, FT.
(Also to nearest drlg. unit line, if any)

16. NO. OF ACRES IN LEASE

17. NO. OF ACRES ASSIGNED
TO THIS WELL

40

18. DISTANCE FROM PROPOSED LOCATION*

1320'

TO NEAREST WELL, DRILLING, COMPLETED,
OR APPLIED FOR, ON THIS LEASE, FT.19. PROPOSED DEPTH
Approx 1500'

20. ROTARY OR CABLE TOOLS

Rotary

21. ELEVATIONS (Show whether DF, RT, GR, etc.)

3542'

22. APPROX. DATE WORK WILL START*

As soon as approved

23.

PROPOSED CASING AND CEMENTING PROGRAM

SIZE OF HOLE	SIZE OF CASING	WEIGHT PER FOOT	SETTING DEPTH	QUANTITY OF CEMENT
13 3/4"	10 3/4"	32#	210'	Circulate
9 7/8"	7"	20#	1150'	Circulate
6 1/8"	4 1/2" tapered 5 1/2"	9.5# 14#	450' 1050'	Circulate

It is our intention to drill a 13 3/4" hole to approx 210', set 10 3/4" casing, if necessary, and circulate, then reduce hole to 9 7/8" and drill to approx. 1150', set 7" surface casing and circulate, reduce hole to 6 1/8" and drill to a total depth of approx. 1500'. If production is encountered a tapered string of production casing will be set according to USGS rules and regulations.

RECEIVED

JUL 2 1971

O. C. C.

ARTESIA, OFFICE

IN ABOVE SPACE DESCRIBE PROPOSED PROGRAM: If proposal is to deepen or plug back, give data on present productive zone and proposed new productive zone. If proposal is to drill or deepen directionally, give pertinent data on subsurface locations and measured and true vertical depths. Give blowout preventer program, if any.

24.

SIGNED

TITLE

Engineer

(This space for Federal or State office use)

PERMIT NO.

APPROVED BY

CONDITIONS OF APPROVAL IF ANY

APPROVED

JUL - 1 1971

H. L. BEEKMAN

ACTING DISTRICT ENGINEER

THIS APPROVAL IS RESCINDED IF OPERATIONS
ARE NOT COMMENCED WITHIN 3 MONTHS.
EXPIRES OCT - 1 1971

*See Instructions On Reverse Side

RECEIVED

JUL 1 1971

U. S. GEOLOGICAL SURVEY
ARTESIA, NEW MEXICODECLARED WATER BASIN
10 1/4"CEMENT BEHIND THE
CASING MUST BE CIRCULATED
DATE

NOTIFY USGS IN SUFFICIENT TIME TO
WITNESS CEMENTING THE 10 1/4" CASING

NEW MEXICO OIL CONSERVATION COMMISSION
WELL LOCATION AND ACREAGE DEDICATION PLAT

Form C-102
Supersedes C-128
Effective 1-1-65

All distances must be from the outer boundaries of the Section.

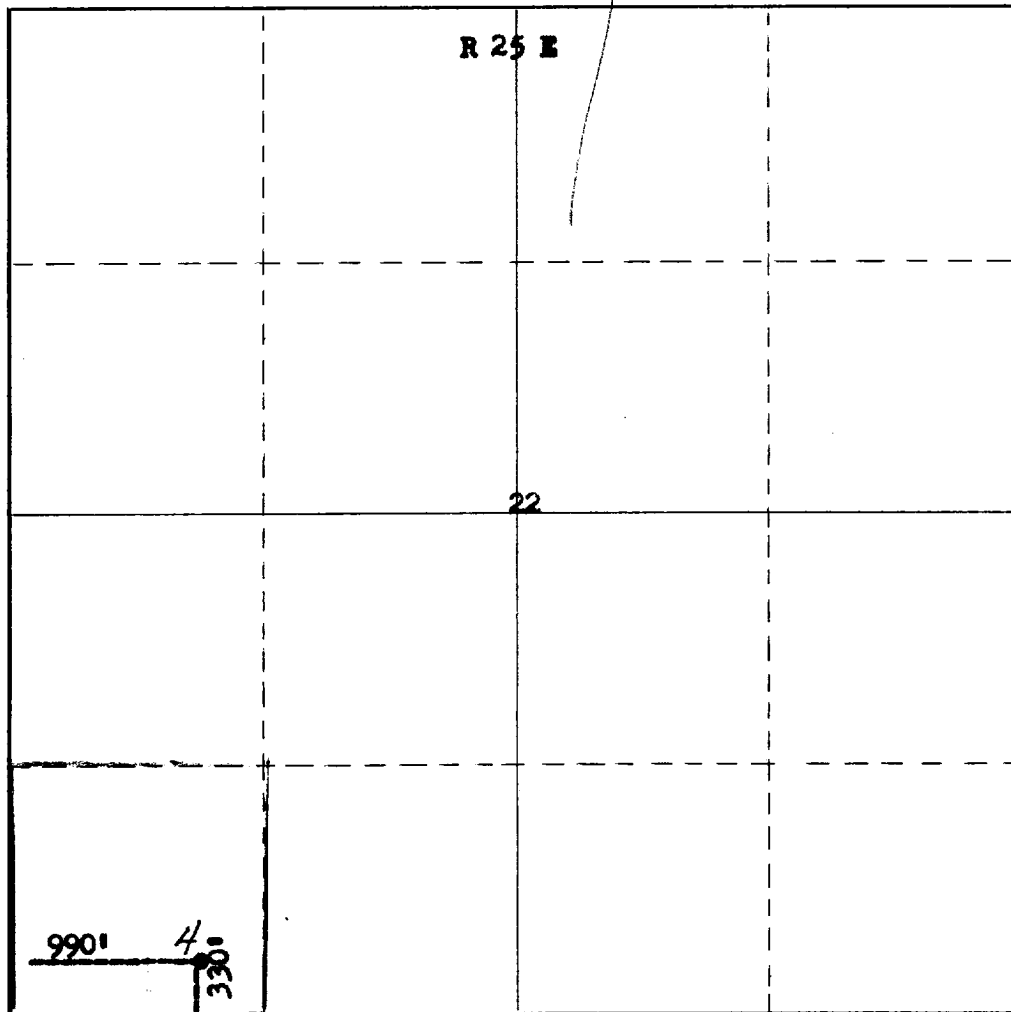
Operator Yates Petroleum Corp.			Lease Federal BW			Well No. 4		
Unit Letter M	Section 22	Township 17 South	Range 25 East	County Hddy				
Actual Footage Location of Well: 330 feet from the South line and 990 feet from the West line								
Ground Level Elev. 3542		Producing Formation San Andres		Pool Und Eagle Creek S. A.			Dedicated Acreage: 40 Acres	

1. Outline the acreage dedicated to the subject well by colored pencil or hachure marks on the plat below.
2. If more than one lease is dedicated to the well, outline each and identify the ownership thereof (both as to working interest and royalty).
3. If more than one lease of different ownership is dedicated to the well, have the interests of all owners been consolidated by communitization, unitization, force-pooling, etc?

☐ Yes ☐ No If answer is "yes," type of consolidation _____

If answer is "no," list the owners and tract descriptions which have actually been consolidated. (Use reverse side of this form if necessary.) _____

No allowable will be assigned to the well until all interests have been consolidated (by communitization, unitization, forced-pooling, or otherwise) or until a non-standard unit, eliminating such interests, has been approved by the Commission.



CERTIFICATION

I hereby certify that the information contained herein is true and complete to the best of my knowledge and belief.

Eddie M. Mahfood
Name

Eddie M. Mahfood

Position **Engineer**

YATES PETROLEUM CORP.

Company

Yates Petroleum Corp.

Date

7-1-71

RECEIVED
I hereby certify that the information contained herein is true and complete to the best of my knowledge and belief.
REGISTERED LAND SURVEYOR
JUL 1 1971
NEW MEXICO

Date Surveyed

June 30, 1971

Registered Professional Engineer and/or Land Surveyor

James H. Brown
Certificate No.

542

0 330 660 990 1320 1650 1980 2310 2640 2970 3300