

10. OF COPIES RECEIVED	1
DISTRIBUTION	
SANTA FE	
FILE	
U.S.G.S.	
LAND OFFICE	
OPERATOR	

RECEIVED
NEW MEXICO OIL CONSERVATION COMMISSION

JUL 9 1971

O. C. C.
ARTESIA, OFFICE

30-015-20467

Form C-101
Revised 1-1-65

5A. Indicate Type of Lease	
STATE <input type="checkbox"/>	FEE <input checked="" type="checkbox"/>
5. State Oil & Gas Lease No.	

APPLICATION FOR PERMIT TO DRILL, DEEPEN, OR PLUG BACK

1a. Type of Work		7. Unit Agreement Name	
b. Type of Well OIL WELL <input checked="" type="checkbox"/> GAS WELL <input type="checkbox"/> OTHER <input type="checkbox"/>		8. Farm or Lease Name Jackson Estate BY	
2. Name of Operator Yates Petroleum Corporation		9. Well No. 3	
3. Address of Operator 207 South 4th Street - Artesia, New Mexico 88210		10. Field and Pool, or Wildcat Und. Eagle Creek S.A.	
4. Location of Well UNIT LETTER L LOCATED 1650 FEET FROM THE South LINE AND 990 FEET FROM THE West LINE OF SEC. 22 TWP. 17S RGE. 25E NMPM		12. County Eddy	
19. Proposed Depth Approx. 1500'		19A. Formation San Andres	
20. Rotary or C.T. Rotary		21. Elevations (Show whether DF, RT, etc.) 3542' GL	
21A. Kind & Status Plug. Bond Blanket		21B. Drilling Contractor Cactus Drilling Co.	
22. Approx. Date Work will start As soon as approved			

PROPOSED CASING AND CEMENT PROGRAM

SIZE OF HOLE	SIZE OF CASING	WEIGHT PER FOOT	SETTING DEPTH	SACKS OF CEMENT	EST. TOP
13 3/4"	10 3/4"	32#	210'	Circulate	
9 7/8"	7"	20#	1150'	Circulate	
6 1/8"	4 1/2") 5 1/2") Tapered	9.5# 14#	450') 1050')	Circulate	

It is our intention to drill a 13 3/4" hole to approx. 210', set 10 3/4" casing, if necessary, and circulate, then reduce hole to 9 7/8" and drill to approx. 1150', set 7" surface casing and circulate, reduce hole to 6 1/8" and drill to a total depth of approx. 1500'. If production is encountered, a tapered string of production casing will be set according to the NMOCC rules and regulations.

APPROVAL VALID
FOR 90 DAYS UNLESS
DRILLING COMMENCED,
EXPIRES 10-12-71

IN ABOVE SPACE DESCRIBE PROPOSED PROGRAM: IF PROPOSAL IS TO DEEPEN OR PLUG BACK, GIVE DATA ON PRESENT PRODUCTIVE ZONE AND PROPOSED NEW PRODUCTIVE ZONE. GIVE BLOWOUT PREVENTER PROGRAM, IF ANY.

I hereby certify that the information above is true and complete to the best of my knowledge and belief.

Signed Eddie H. Halyard Title Engineer Date 7-8-71

(This space for State Use)

APPROVED BY W. A. Grasset TITLE OIL AND GAS INSPECTOR DATE JUL 12 1971

CONDITIONS OF APPROVAL, IF ANY:

Notify N.M.O.C.C. in sufficient time to witness cementing Cement must be circulated to the 7" casing surface behind 7" casing

N: MEXICO OIL CONSERVATION COMMISS.
WELL LOCATION AND ACREAGE DEDICATION PLAT

Form C-102
Supersedes C-128
Effective 1-1-65

All distances must be from the outer boundaries of the Section.

Operator Yates Petroleum Corporation			Lease Jackson Estate BY		Well No. 3
Unit Letter L	Section 22	Township 17 south	Range 25 east	County Eddy	
Actual Footage Location of Well: 1650 feet from the south line and 990 feet from the West line					
Ground Level Elev. 3542	Producing Formation San Andres		Pool Und. Eagle Creek S.A.		Dedicated Acreage: 40 Acres

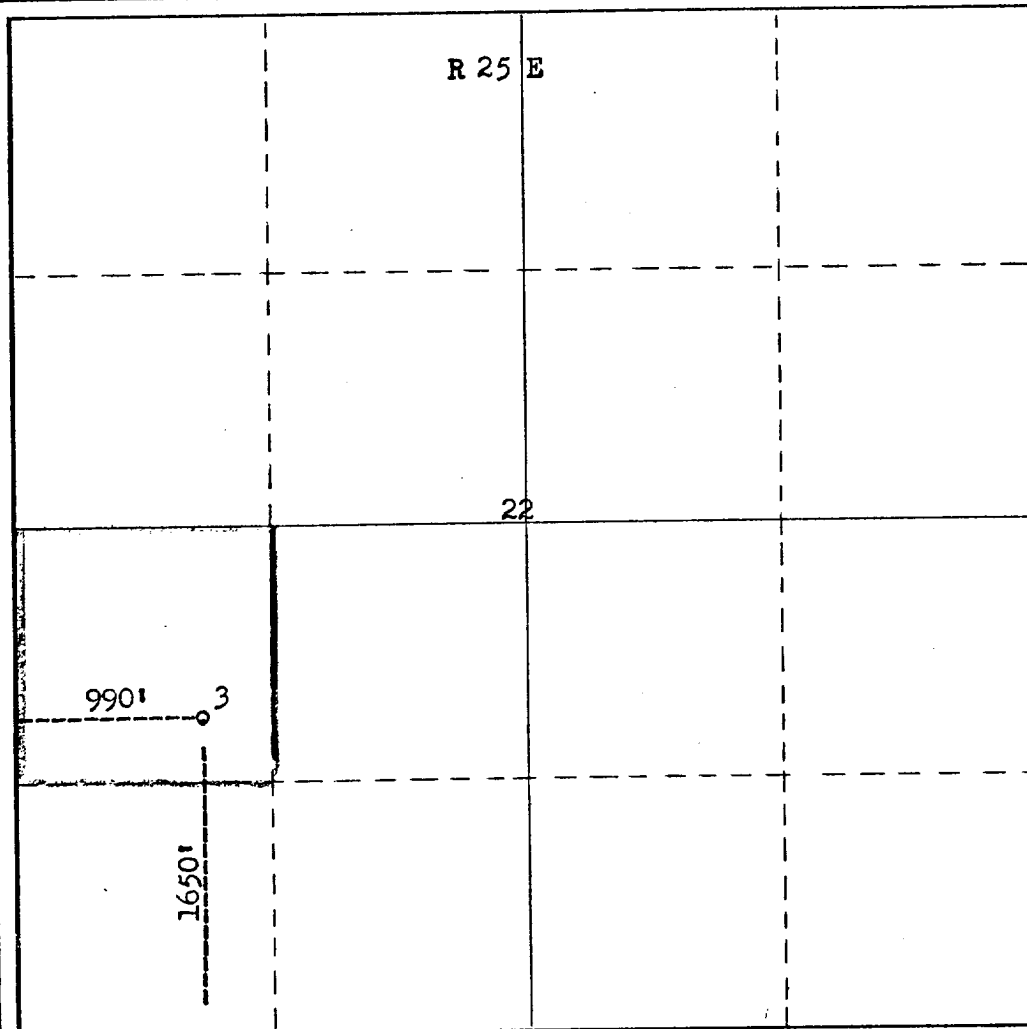
- Outline the acreage dedicated to the subject well by colored pencil or hachure marks on the plat below.
- If more than one lease is dedicated to the well, outline each and identify the ownership thereof (both as to working interest and royalty).
- If more than one lease of different ownership is dedicated to the well, have the interests of all owners been consolidated by communitization, unitization, force-pooling, etc?

RECEIVED

☐ Yes ☐ No If answer is "yes," type of consolidation JUL 9 1971

If answer is "no," list the owners and tract descriptions which have actually been consolidated. (Use reverse side of this form if necessary.) D. C. C.

No allowable will be assigned to the well until all interests have been consolidated (by communitization, unitization, forced-pooling, or otherwise) or until a non-standard unit, eliminating such interests, has been approved by the Commission.



CERTIFICATION

I hereby certify that the information contained herein is true and complete to the best of my knowledge and belief.

Eddie M. Mahfood

Name
Eddie M. Mahfood

Position
Engineer

Company
Yates Petroleum Corp.

Date
7-8-71

I hereby certify that the well location shown on this plat was plotted from field notes of actual surveys made by me or under my supervision, and that the same is true and correct to the best of my knowledge and belief.

Date Surveyed

July 7, 1971

Registered Professional Engineer and/or Land Surveyor

James H. Brown

Certificate No.

542

T
17
3