

Form 9-331C
(May 1963)

SUBMIT IN TR DATE*

Form approved.
Budget Bureau No. 42-R1425.UNITED STATES
DEPARTMENT OF THE INTERIOR
GEOLOGICAL SURVEY

APPLICATION FOR PERMIT TO DRILL, DEEPEN, OR PLUG BACK

1a. TYPE OF WORK

DRILL ☒DEEPEN ☐PLUG BACK ☐

b. TYPE OF WELL

OIL
WELL ☒GAS
WELL ☐

OTHER

SINGLE
ZONE ☒MULTIPLE
ZONE ☐

2. NAME OF OPERATOR

READ & STEVENS, INC.

3. ADDRESS OF OPERATOR

Post Office Box 2126, Roswell, New Mexico, 88201

4. LOCATION OF WELL (Report location clearly and in accordance with any State requirements.)*

At surface

1980' FWL & 660' FSL: Sec. 29-16S-30E, N.M.P.M.

At proposed prod. zone

Same

14. DISTANCE IN MILES AND DIRECTION FROM NEAREST TOWN OR POST OFFICE*

5 miles North of Loco Hills, New Mexico

15. DISTANCE FROM PROPOSED*

LOCATION TO NEAREST
PROPERTY OR LEASE LINE, FT.
(Also to nearest grig. unit line, if any)

660'

16. NO. OF ACRES IN LEASE

360.00 acres

17. NO. OF ACRES ASSIGNED
TO THIS WELL

40.00 acres

18. DISTANCE FROM PROPOSED LOCATION*
TO NEAREST WELL, DRILLING, COMPLETED,
OR APPLIED FOR, ON THIS LEASE, FT.

N.A.

19. PROPOSED DEPTH

9100'

20. ROTARY OR CABLE TOOLS

Rotary - surface to 9100'

21. ELEVATIONS (Show whether DF, RT, GR, etc.)

Submit later

22. APPROX. DATE WORK WILL START*

7/10/71

23.

PROPOSED CASING AND CEMENTING PROGRAM

SIZE OF HOLE	SIZE OF CASING	WEIGHT PER FOOT	SETTING DEPTH	QUANTITY OF CEMENT
16"	12-3/4"	34#	400'	400 sx. - Circ. to surface
11"	8-5/8"	24# & 28#	2950'	250 sx.
7-7/8"	4-1/2"	9.5# & 11.6#	9100'	300 sx.

RECEIVED

JUL 19 1971

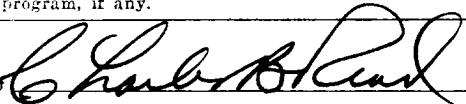
O. C. C.
ARTESIA, OFFICE

RECEIVED
JUL 7 1971
U. S. GEOLOGICAL SURVEY
ARTESIA, NEW MEXICO

IN ABOVE SPACE DESCRIBE PROPOSED PROGRAM: If proposal is to deepen or plug back, give data on present productive zone and proposed new productive zone. If proposal is to drill or deepen directionally, give pertinent data on subsurface locations and measured and true vertical depths. Give blowout preventer program, if any.

24.

SIGNED



TITLE

President

DATE

7/6/71

(This space for Federal or State office use)

PERMIT NO.

APPROVAL DATE

APPROVED
JUL 19 1971
L. L. BEEKMAN
ACTING DISTRICT SUPERVISOR

TITLE

DATE

THIS APPROVAL IS RE-CINDED IF OPERATIONS
ARE NOT COMMENCED WITHIN 3 MONTHS.
*See Instructions On Reverse Side

**NEW MEXICO OIL CONSERVATION COMMISSION
WELL LOCATION AND ACREAGE DEDICATION PLAT**

Form C-102
Supersedes C-128
Effective 1-1-65

All distances must be from the outer boundaries of the Section.

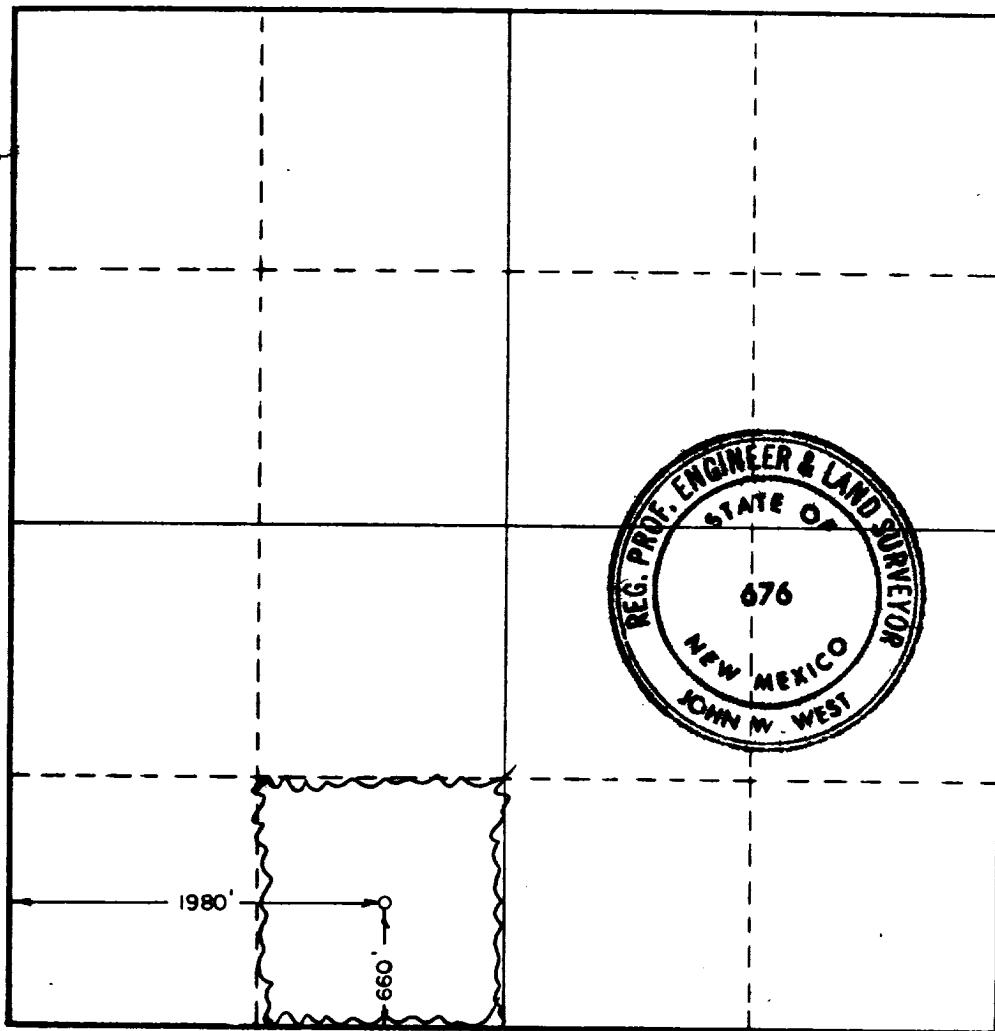
Operator READ & STEVENS, INC.			Lease WILBO - FEDERAL North Square Lake Unit		Well No. 1
Unit Letter N	Section 29	Township 16 SOUTH	Range 30 EAST	County EDDY	
Actual Footage Location of Well:					
660 feet from the SOUTH line and 1980 feet from the WEST line					
Ground Level Elev. N.A.	Producing Formation W.C. Penn.		Pool WC	Dedicated Acreage: 40 Acres	

1. Outline the acreage dedicated to the subject well by colored pencil or hachure marks on the plat below.
2. If more than one lease is dedicated to the well, outline each and identify the ownership thereof (both as to working interest and royalty).
3. If more than one lease of different ownership is dedicated to the well, have the interests of all owners been consolidated by communitization, unitization, force-pooling, etc?

☐ Yes ☐ No If answer is "yes," type of consolidation _____

If answer is "no," list the owners and tract descriptions which have actually been consolidated. (Use reverse side of this form if necessary.) _____

No allowable will be assigned to the well until all interests have been consolidated (by communitization, unitization, forced-pooling, or otherwise) or until a non-standard unit, eliminating such interests, has been approved by the Commission.



CERTIFICATION

I hereby certify that the information contained herein is true and complete to the best of my knowledge and belief.

Name **Robert E. Beling**

Position **Agent**

Company **Read & Stevens, Inc.**

Date **7-6-1971**

I hereby certify that the well location shown on this plat was plotted from field notes of actual surveys made by me or under my supervision, and that the same is true and correct to the best of my knowledge and belief.

Date Surveyed

JULY 1, 1971

Registered Professional Engineer and/or Land Surveyor

John W. West
Certificate No.

676

