

UNITED STATES
DEPARTMENT OF THE INTERIOR
GEOLOGICAL SURVEY

APPLICATION FOR PERMIT TO DRILL, DEEPEN, OR PLUG BACK

1a. TYPE OF WORK

DRILL ☐DEEPEN ☒PLUG BACK ☐

b. TYPE OF WELL

OIL
WELL ☐GAS
WELL ☒OTHER ReentrySINGLE
ZONE ☐MULTIPLE
ZONE ☐

2. NAME OF OPERATOR

Yates Petroleum Corporation /

3. ADDRESS OF OPERATOR

207 S. 4th Street, Artesia, NM 88210

4. LOCATION OF WELL (Report location clearly and in accordance with any State regulations)
At surface

660' FSL & 1980' FWL

At proposed prod. zone

same

14. DISTANCE IN MILES AND DIRECTION FROM NEAREST TOWN OR POST OFFICE*

7 miles north of Loco Hills, New Mexico

15. DISTANCE FROM PROPOSED*

LOCATION TO NEAREST

PROPERTY OR LEASE LINE, FT.

(Also to nearest drlg. unit line, if any)

660'

16. NO. OF ACRES IN LEASE

640

17. NO. OF ACRES ASSIGNED
TO THIS WELL

40.320

18. DISTANCE FROM PROPOSED LOCATION*

TO NEAREST WELL, DRILLING, COMPLETED,
OR APPLIED FOR, ON THIS LEASE, FT.

19. PROPOSED DEPTH

Approx. 11,000'

20. ROTARY OR CABLE TOOLS

SERVICE UNIT

21. ELEVATIONS (Show whether DF, RT, GR, etc.)

3723' GL

22. APPROX. DATE WORK WILL START*

ASAP

23.

PROPOSED CASING AND CEMENTING PROGRAM

SIZE OF HOLE	SIZE OF CASING	WEIGHT PER FOOT	SETTING DEPTH	QUANTITY OF CEMENT
16"	12 3/4"	in place	461'	400 SX.
11"	8 5/8"	in place	2991'	450 SX.
7 7/8"	4 1/2 or 5 1/2	17-20# N-80	TD	350 SX.

We propose to drill the 8 plugs and clean out the original TD of 9122' and deepen to 11000' will test the morrow and intermediate horizons. If commercial will run 4 1/2 or 5 1/2 and cement with at least 600' of cover.

MUD PROGRAM: Native mud to 7450', Gel Starch KCL with 8-9% oil to 9000'; starch, Drispak KCL to TD.

BOP PROGRAM: BOP's and hydril will be installed on the 8 5/8" casing and tested, pipe rams tested daily, blind rams on trips.

GAS NOT DEDICATED.

14A BY READ & STEVENS ON 8-12-71.

IN ABOVE SPACE DESCRIBE PROPOSED PROGRAM: If proposal is to deepen or plug back, give data on present productive zone and proposed new productive zone. If proposal is to drill or deepen directionally, give pertinent data on subsurface locations and measured and true vertical depths. Give blowout preventer program, if any.

24.

SIGNED

TITLE Geographer

DATE 3-21-81

(This space for Federal or State Approval)
(O.C.D.) GEORGE E. STEVENS

PERMIT NO.

APPROVAL DATE

APPROVED BY

TITLE

CONDITIONS OF APPROVAL, IF ANY:

APR 20 1981
JAMES A. GILLHAM
DISTRICT SUPERVISORRECEIVED
MAR 24 1981
OIL & GAS
U.S. GEOLOGICAL SURVEY
POWELL NEW MEXICO

100-443881-104



NEW MEXICO OIL CONSERVATION COMMISSION
WELL LOCATION AND ACREAGE DEDICATION PLAT

Form O-102
Supersedes O-1
Effective 1-1-61

All distances must be from the outer boundaries of the Section.

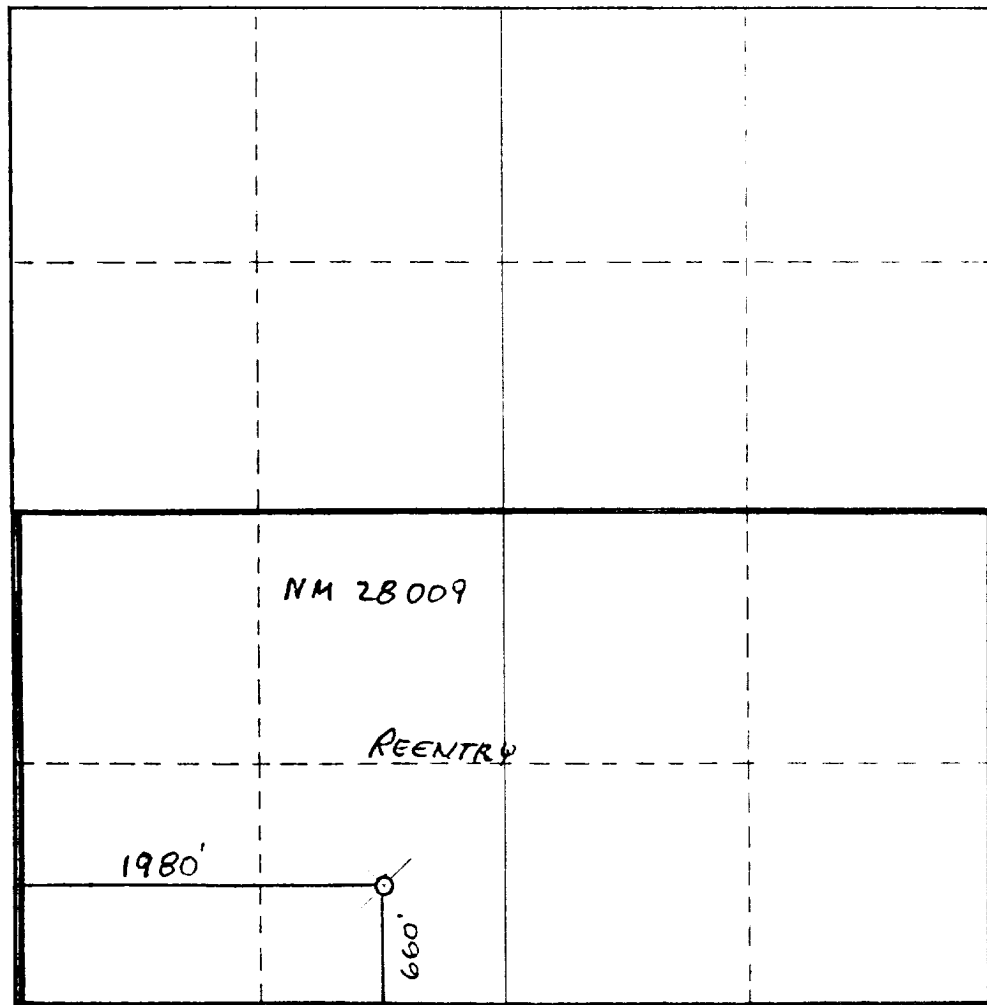
Operator YATES PETROLEUM CORP		Lease WILBO "QA" FEDERAL		Well No. 1
Unit Letter N	Section 29	Township 16 SOUTH	Range 30 EAST	County EDDY
Actual Footage Location of Well: 660 feet from the SOUTH line and 1980 feet from the WEST line				
Ground Level Elev. 3723'	Producing Formation MORROW	Pool UNDES. MORROW	Leasehold Acreage 320 Acres	

1. Outline the acreage dedicated to the subject well by colored pencil or hachure marks on the plat below.
2. If more than one lease is dedicated to the well, outline each and identify the ownership thereof (both as to working interest and royalty).
3. If more than one lease of different ownership is dedicated to the well, have the interests of all owners been consolidated by communitization, unitization, force-pooling, etc?

☐ Yes ☐ No If answer is "yes," type of consolidation _____

If answer is "no," list the owners and tract descriptions which have actually been consolidated. (Use reverse side of this form if necessary.) _____

No allowable will be assigned to the well until all interests have been consolidated (by communitization, unitization, forced-pooling, or otherwise) or until a non-standard unit, eliminating such interests, has been approved by the Commission.



CERTIFICATION

I hereby certify that the information contained herein is true and complete to the best of my knowledge and belief.

Gliserio Rodriguez
Signature

GLISERIO RODRIGUEZ
Name

GEOGRAPHER
Profession

YATES PETROLEUM CORP
Company

3-20-81
Date

I hereby certify that the well location shown on this plat was plotted from field notes of actual surveys made by me or under my supervision, and that the same is true and correct to the best of my knowledge and belief.

REFER TO ORIGINAL PLAT

Date Surveyed

Registered Professional Engineer
and/or Land Surveyor

Certificate No.

Yates Petroleum Corporation
Wilbo "QA" Fed #1
660' FSL & 1980 FWL
Section 29 16S 30E
Eddy County, New Mexico

In conjunction with Form 9-331C, Application for Permit to Drill subject well, Yates Petroleum Corporation submits the following ten items of pertinent information in accordance with USGS requirements:

1. The geologic surface formation is sandy alluvium.
2. The estimate tops of geologic markers are as follows:

Yates 1220'	Lovington Sd 2910'	Abo 6318'
Seven Rivers 1490'	Glorieta 4267'	Wolfcamp 7512'
Queen 2036'	Tubb 5606'	Henshaw Zone 8576'
San Andres 2847'	Abo 6318'	Cisco 8780'
Atoka 9500'	Morrow 10,050'	TD 11,000'
3. The estimated depths at which anticipated water, oil, or gas formations are expected to be encountered:

Gas: 9550 - 10,070'
4. Proposed Casing Program: See Form 9-331C.
5. Pressure Control Equipment: See Form 9-331C.
6. Mud Program: See Form 9-331C.
7. Auxiliary Equipment: As required.
8. Testing, Logging and Coring Program:

Samples: Possible old TD to new TD
DST's: As warranted
Logging: CNL-FDC TD - casing with GR-CNL on up to surface
Coring: DLL TD - casing
9. No abnormal pressures or temperatures are anticipated.
10. Anticipated starting date: As soon as approved.

Yates Petroleum Corporation
Wilbo "QA" Federal #1
Section 29-16-30
660' FSL & 1980' FWL
(Reentry Well)

This plan is submitted with Form 9-331C, Application for Permit to Drill, covering the above described well. The purpose of this plan is to describe the location, the construction activities and operations plan, the surface disturbance involved, and the procedures to be followed in rehabilitating the surface after completion of the operations, so that a complete appraisal can be made of the environmental effect associated with the drilling of this well.

1. EXISTING ROADS.

Exhibit A is a portion of a county map showing the roads in the vicinity of the proposed location. The proposed wellsite is located approximately 5 miles north of Loco Hills, New Mexico and the access route to the location is indicated in red and green on Exhibit A.

DIRECTIONS:

Go north of Loco Hills on the black top approximately 7 miles. Turn west and continue for 1/2 mile. Turn south and travel 1/2 mile to the location. All existing roads will be up graded.

2. PLANNED ACCESS ROAD.

A. The location has been flagged and the route of the road is visible.

3. LOCATION OF EXISTING WELL.

A. No existing wells are in the area.

4. LOCATION OF EXISTING AND/OR PROPOSED FACILITIES.

A. There are no production facilities on this lease at the present time.

B. In the event that the well is productive, the necessary production facilities will be installed on the drilling pad. If the well is productive oil, a gas or diesel self-contained unit will be used to provide the necessary power. No power will be required if the well is productive of gas.

5. LOCATION AND TYPE OF WATER SUPPLY.

A. It is planned to drill the proposed well with a fresh water system. The water will be obtained from a trucking firm and will be trucked to the location.

6. SOURCE OF CONSTRUCTION MATERIALS.

A. No construction materials will be needed.

7. METHODS OF HANDLING WASTE DISPOSAL.

- A. Drilling cuttings will be disposed of in the reserve pits.
- B. Drilling fluids will be allowed to evaporate in the reserve pits until the pits are dry.
- C. Water produced during operations will be collected in tanks until hauled to an approved disposal system, or separate disposal application will be submitted to the USGS for appropriate approval.
- D. Oil produced during operations will be stored in tanks until sold.
- E. Current laws and regulations pertaining to the disposal of human waste will be complied with.
- F. Trash, waste paper, garbage and junk will be buried in a separate trash pit and covered with minimum of 24 inches dirt. All waste material will be contained to prevent scattering by the wind.
- G. All trash and debris will be buried or removed from the wellsite within 30 days after finishing drilling and/or completion operations.

8. ANCILLARY FACILITIES.

- A. None required.

9. WELLSITE LAYOUT.

- A. The wellsite is intact.
- B. The location surface is caliche.
- C. The reserve pits needed will be very small for a pulling unit.

10. PLANS FOR RESTORATION OF THE SURFACE.

- A. After finishing drilling and/or completion operations, all equipment and other material not needed for further operations will be removed. The location will be cleaned of all trash and junk to leave the wellsite in as pleasing a condition as possible.
- B. Unguarded pits, if any, containing fluids will be fenced until they have dried and leveled.
- C. If the proposed well is non-productive, all rehabilitation requirements of the BLM stipulations will be complied with.

11. OTHER INFORMATION.

- A. Topography: The land surface in the vicinity of the wellsite is fairly sandy and covered with dunes.

- B. Flora and Fauna: The vegetation cover consists of weeds and lots of mesquite. No wildlife was observed.
- C. Surface Ownership: The wellsite is on federal surface and materials.
- D. There is no evidence of any archaeological, historical or cultural sites in the area.

12. OPERATOR'S REPRESENTATIVE.

- A. The field representative responsible for assuring compliance with the approved surface use plan is:


Gliserio "Rod" Rodriguez or Cy Cowan
Yates Petroleum Corporation
207 South 4th Street
Artesia, New Mexico 88210
(505) 746-3558

13. CERTIFICATION.

I hereby certify that I, or persons under my direct supervision, have inspected the proposed drillsite and access route, that I am familiar with the conditions which presently exist; that the statements made in this plan are to the best of my knowledge true and correct; and, that the work associated with the operations proposed herein will be performed by Yates Petroleum Company and its contractors and subcontractors in conformity with this plan and the terms and conditions under which it is approved.

March 21, 1981

Date



Gliserio Rodriguez Geographer

EXHIBIT A

YATES PETROLEUM CORP.

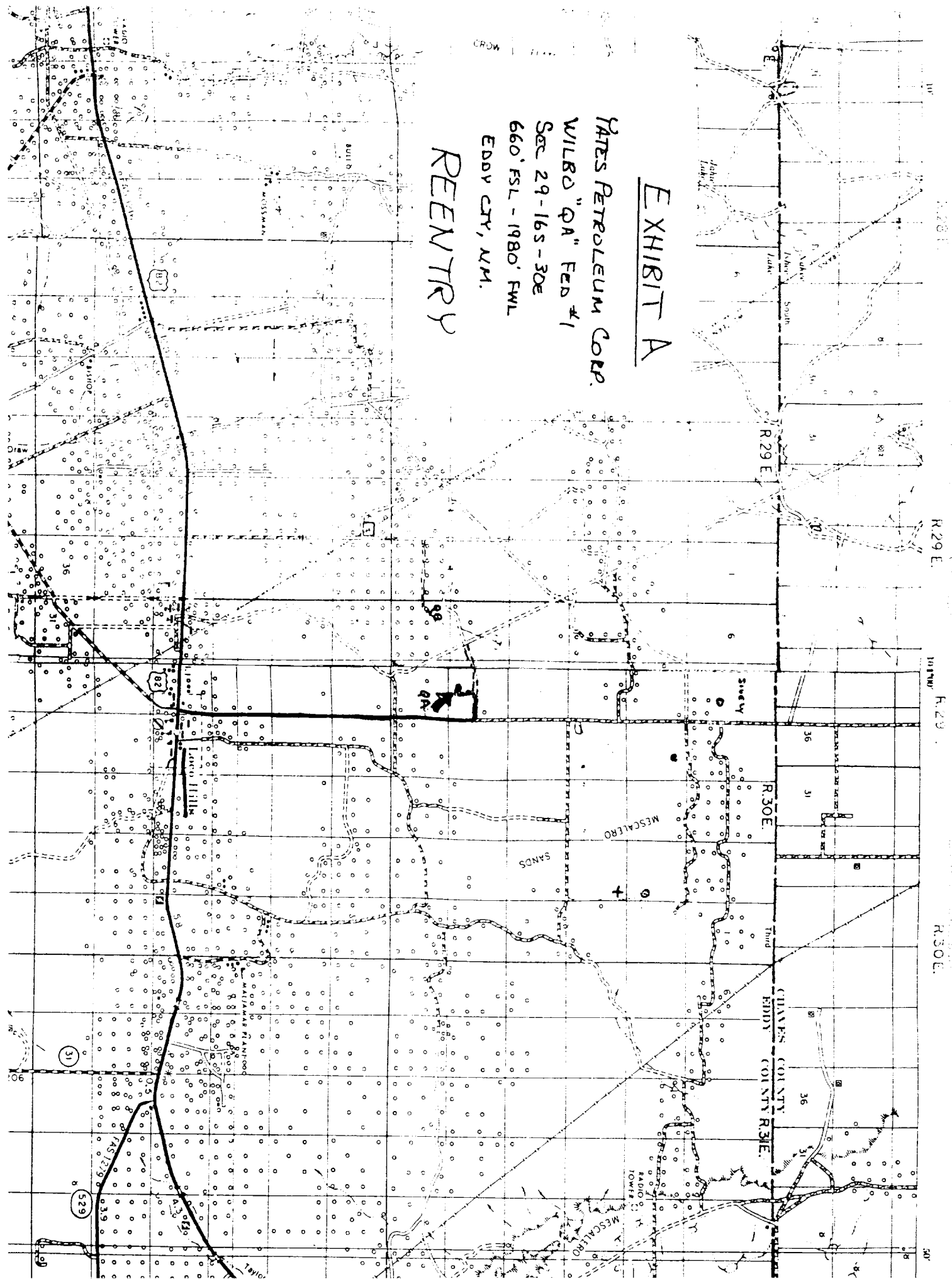
WILCO "QA" FED #1

SEC 29-16S-30E

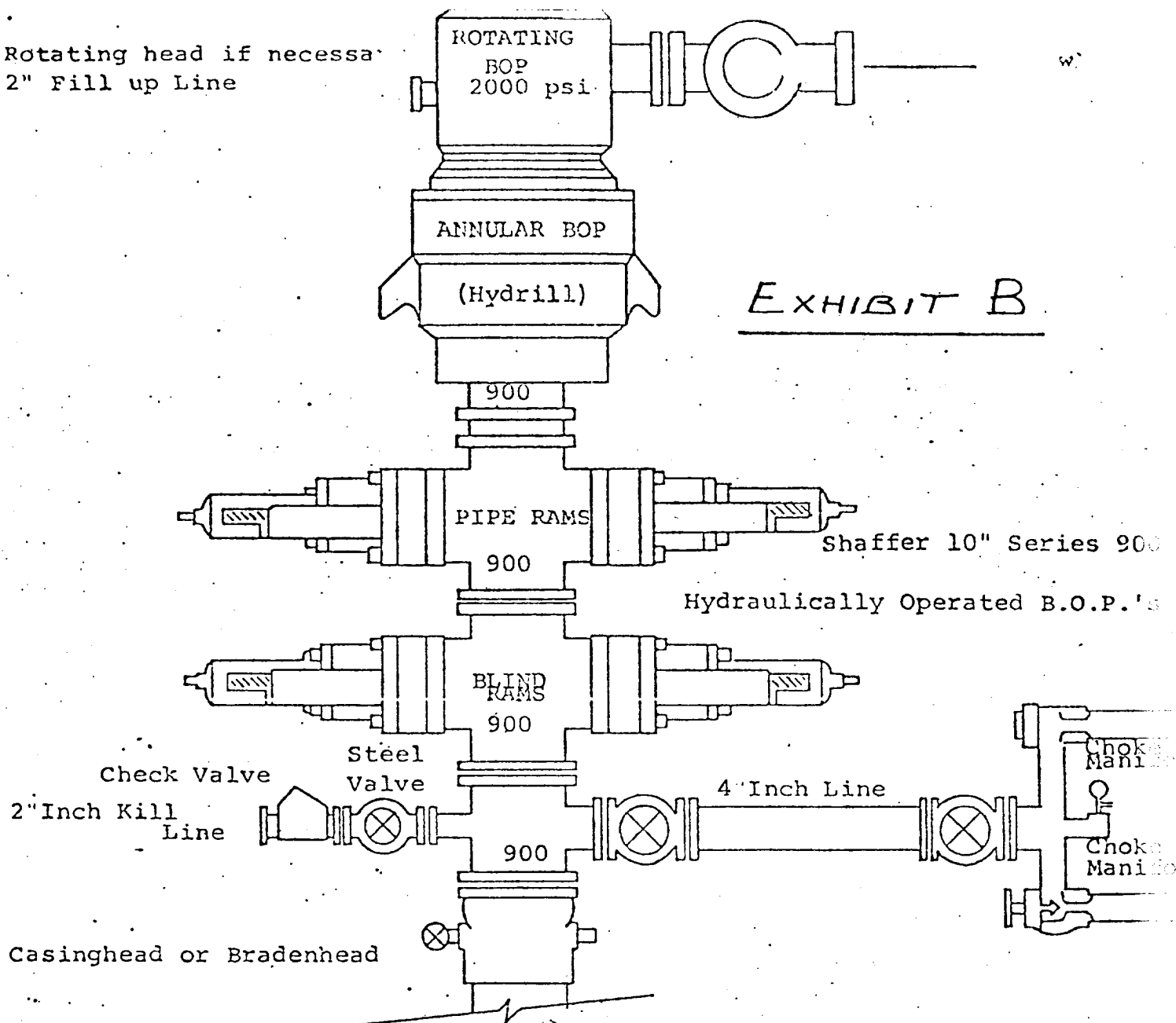
660' FSL - 1980' FWL

EDDY CRY, N.M.

REENTRY



Rotating head if necessary
2" Fill up Line



THE FOLLOWING CONSTITUTE MINIMUM BLOWOUT PREVENTER REQUIREMENTS

1. All preventers to be hydraulically operated with secondary manual control installed prior to drilling out from under casing.
2. Choke outlet to be a minimum of 4" diameter.
3. Kill line to be of all steel construction of 2" minimum diameter.
4. All connections from operating manifolds to preventers to be all steel hole or tube a minimum of one inch in diameter.
5. The available closing pressure shall be at least 15% in excess of that required with sufficient volume to operate the B.O.P.'s.
6. All connections to and from preventer to have a pressure rating equivalent to that of the B.O.P.'s.
7. Inside blowout preventer to be available on rig floor.
8. Operating controls located a safe distance from the rig floor.
9. Hole must be kept filled on trips below intermediate casing. Operator not responsible for blowouts resulting from not keeping hole full.
10. D. P. float must be installed and used below zone of first gas intrusion.

EXHIBIT C

YATES PETROLEUM CORPORATION

