

UNITED STATES
DEPARTMENT OF THE INTERIOR
GEOLOGICAL SURVEY

APPLICATION FOR PERMIT TO DRILL, DEEPEN, OR PLUG BACK

1a. TYPE OF WORK

DRILL ☒

DEEPEN ☐

PLUG BACK ☐

b. TYPE OF WELL

OIL WELL ☒

GAS WELL ☐

OTHER

SINGLE ZONE ☐

MULTIPLE ZONE ☐

2. NAME OF OPERATOR

Yates Petroleum Corporation

3. ADDRESS OF OPERATOR

207 South 4th Street - Artesia, New Mexico

4. LOCATION OF WELL (Report location clearly and in accordance with any State requirements.)*

At surface

990' FNL & 2310' FWL of Sec. 22-17S-25E

At proposed prod. zone

14. DISTANCE IN MILES AND DIRECTION FROM NEAREST TOWN OR POST OFFICE*

Approx 5 miles West of Artesia, New Mexico

10. DISTANCE FROM PROPOSED*

LOCATION TO NEAREST
PROPERTY OR LEASE LINE, FT.
(Also to nearest drlg. unit line, if any)

16. NO. OF ACRES IN LEASE

17. NO. OF ACRES ASSIGNED
TO THIS WELL

18. DISTANCE FROM PROPOSED LOCATION*

TO NEAREST WELL, DRILLING, COMPLETED,
OR APPLIED FOR, ON THIS LEASE, FT.

1320'

19. PROPOSED DEPTH

Approx. 1500'

20. ROTARY OR CABLE TOOLS

Rotary

21. ELEVATIONS (Show whether DF, RT, GR, etc.)

3534' GL

23.

PROPOSED CASING AND CEMENTING PROGRAM

SIZE OF HOLE	SIZE OF CASING	WEIGHT PER FOOT	SETTING DEPTH	QUANTITY OF CEMENT
13 3/8"	10 3/4"	32#	210' (Approx.)	Circulate
9 7/8"	7"	23#	1150'	Circulate
6 1/8"	4 1/2" Tapered 5 1/2")	9.5# 14#	450') 1050')	Circulate

It is our intention to drill a 13 3/8" hole to approx. 210', set 10 3/4" casing if necessary and circulate, then reduce hole to 9 7/8" and drill to approximately 1150', set 7" surface casing and circulate, reduce hole to 6 1/8" and drill to a total depth of approximately 1500'. If production is encountered a tapered string of production casing will be set according to the USGS rules and regulations.

RECEIVED

JUL 20 1971

O. C. C.

ARTESIA OFFICE

IN ABOVE SPACE DESCRIBE PROPOSED PROGRAM: If proposal is to deepen or plug back, give data on present productive zone and proposed new productive zone. If proposal is to drill or deepen directionally, give pertinent data on subsurface locations and measured and true vertical depths. Give blowout preventer program, if any.

24.

SIGNED

Eddie M. Kelly

TITLE

Engineer

DATE

7-19-71

(This space for Federal or State office use)

PERMIT NO.

APPROVAL DATE

APPROVED BY

CONDITIONS OF APPROVAL, IF ANY:

TITLE

THIS APPROVAL IS RESCINDED IF OPERATIONS
ARE NOT COMMENCED WITHIN 3 MONTHS.
EXPIRES *See Instructions on Reverse Side*

NOTIFY USGS IN SUFFICIENT TIME TO
WITNESS CEMENTING THE *7"* CASING

DECLARED WATER BASIN

CEMENT BEHIND THE
CASING MUST BE CIRCULATED

JUL 19 1971

U. S. GEOLOGICAL SURVEY
ARTESIA, NEW MEXICO

10 3/4"

2"

7"

Copy to 51

30-015-20474

5. LEASE DESIGNATION AND SERIAL NO.

NM 036191

6. IF INDIAN, ALLOTTEE OR TRIBE NAME

7. UNIT AGREEMENT NAME

8. FARM OR LEASE NAME

Federales BO

9. WELL NO.

4

10. FIELD AND POOL, OR WILDCAT

Eagle Creek S.A.

11. SEC., T., R., M., OR BLK.

AND SURVEY OR AREA

Sec. 22-17S-25E

Unit C NMPM

12. COUNTY OR PARISH

Eddy

13. STATE

N. M.

22. APPROX. DATE WORK WILL START*

As soon as approved

NL MEXICO OIL CONSERVATION COMMISSION
WELL LOCATION AND ACREAGE DEDICATION PLAT

Form C-102
Supersedes C-128
Effective 1-1-65

All distances must be from the outer boundaries of the Section.

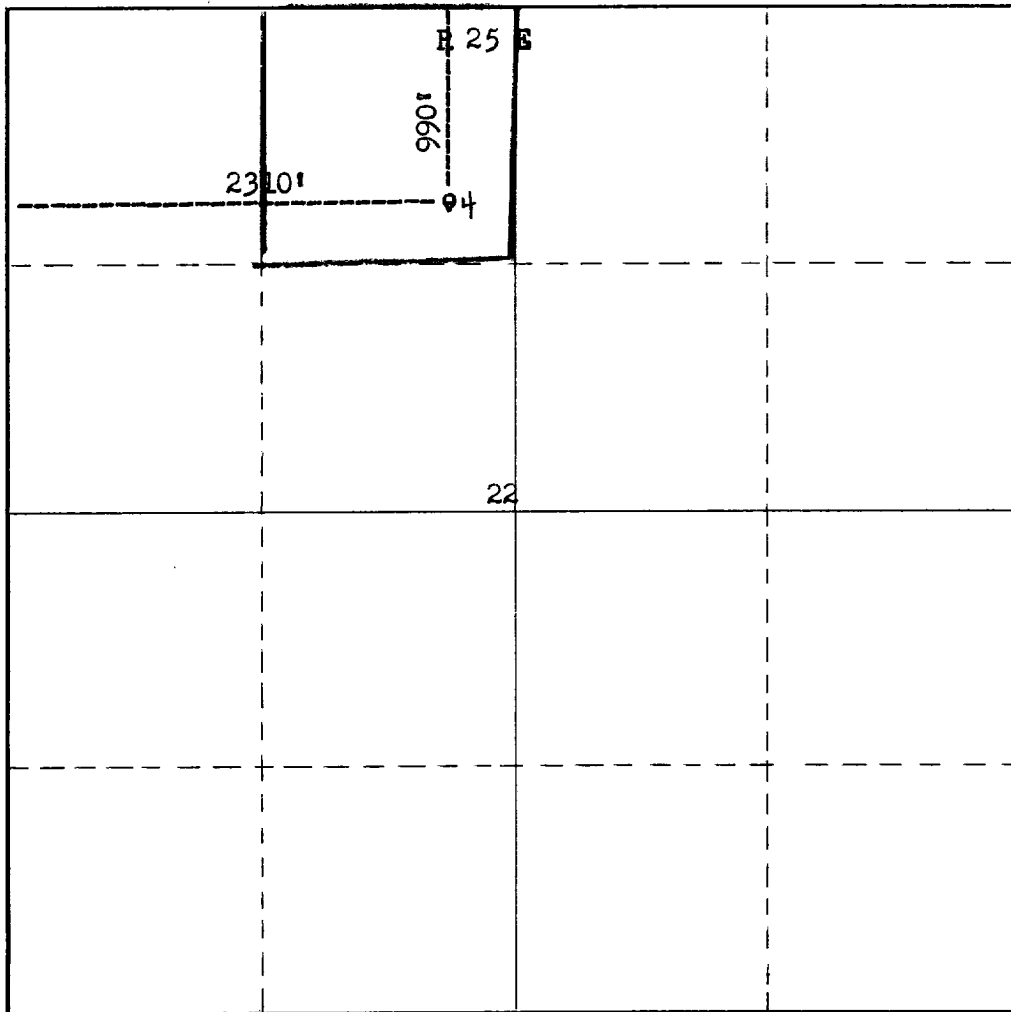
Operator Yates Petroleum Corporation			Lease Federales BO XXXXXXXXXX		Well No. 4
Unit Letter G	Section 22	Township 17 South	Range 25 East	County Eddy	
Actual Footage Location of Well: 990 feet from the North line and 2310 feet from the West line					
Ground Level Elev. 3534 GL	Producing Formation San Andres	Pool Eagle Creek S. A.		Dedicated Acreage: 40 Acres	

1. Outline the acreage dedicated to the subject well by colored pencil or hachure marks on the plat below.
2. If more than one lease is dedicated to the well, outline each and identify the ownership thereof (both as to working interest and royalty).
3. If more than one lease of different ownership is dedicated to the well, have the interests of all owners been consolidated by communitization, unitization, force-pooling, etc?

☐ Yes ☐ No If answer is "yes," type of consolidation _____

If answer is "no," list the owners and tract descriptions which have actually been consolidated. (Use reverse side of this form if necessary.) _____

No allowable will be assigned to the well until all interests have been consolidated (by communitization, unitization, forced-pooling, or otherwise) or until a non-standard unit, eliminating such interests, has been approved by the Commission.



CERTIFICATION

I hereby certify that the information contained herein is true and complete to the best of my knowledge and belief.

Eddie M. Manfood
Name
Eddie M. Manfood

Position
Engineer

Company
Yates Petroleum Corp.

Date
7-19-71

I hereby certify that the well location shown on this plat was plotted from field notes of actual surveys made by me or under my supervision, and that the same is true and correct to the best of my knowledge and belief.

Date Surveyed
July 17, 1971

Registered Professional Engineer and/or Land Surveyor

James H. Brown
Certificate No.

542

T
17
S

