

UNITED STATES
DEPARTMENT OF THE INTERIOR
GEOLOGICAL SURVEY

30-015-20497

5. LEASE DESIGNATION AND SERIAL NO.

NM 0630

6. IF INDIAN, ALLOTTEE OR TRIBE NAME

7. UNIT AGREEMENT NAME

8. FARM OR LEASE NAME

Federal LDY

9. WELL NO.

4

10. FIELD AND POOL, OR WILDCAT

Und.

Eagle Creek S.A.

11. SEC., T., R., M., OR BLK.
AND SURVEY OR AREASec. 27-17S-25E
Unit E NMPM

12. COUNTY OR PARISH

Eddy

N. Mex.

1a. TYPE OF WORK

DRILL ☒DEEPEN ☐PLUG BACK ☐

b. TYPE OF WELL

OIL
WELL ☒GAS
WELL ☐

OTHER

SINGLE
ZONE ☐MULTIPLE
ZONE ☐

2. NAME OF OPERATOR

Yates Petroleum Corporation

3. ADDRESS OF OPERATOR

207 South 4th Street - Artesia, New Mexico 88210

4. LOCATION OF WELL (Report location clearly and in accordance with any State requirements.)

At surface

2310' FNL & 990' FWL of Sec. 27-17S-25E

At proposed prod. zone

14. DISTANCE IN MILES AND DIRECTION FROM NEAREST TOWN OR POST OFFICE*

Approx. 5 miles west of Artesia, N.M.

15. DISTANCE FROM PROPOSED* 990'

LOCATION TO NEAREST
PROPERTY OR LEASE LINE, FT.
(Also to nearest drlg. unit line, if any)

16. NO. OF ACRES IN LEASE

17. NO. OF ACRES ASSIGNED
TO THIS WELL

40

18. DISTANCE FROM PROPOSED LOCATION*
TO NEAREST WELL, DRILLING, COMPLETED,
OR APPLIED FOR, ON THIS LEASE, FT.

19. PROPOSED DEPTH

Approx. 1500'

20. ROTARY OR CABLE TOOLS

Rotary

21. ELEVATIONS (Show whether DF, RT, GR, etc.)

3541' GL

22. APPROX. DATE WORK WILL START*

Immediately

23.

PROPOSED CASING AND CEMENTING PROGRAM

SIZE OF HOLE	SIZE OF CASING	WEIGHT PER FOOT	SETTING DEPTH	QUANTITY OF CEMENT
13 3/4"	10 3/4"	32#	150'	Circulate
9 7/8"	7"	20#	1130'	Circulate
6 1/4"	4 1/2") Tapered	11#	450') 1500'	
	5 1/2")	14#	1050')	

It is our intention to drill a 13 3/4" hole to approx. 150', set 10 3/4" casing, if necessary, and circulate, then reduce hole to 9 7/8", drill to approx. 1130', set 7" surface casing and circulate, reduce hole to 6 1/4" and drill to a total depth of approx. 1500'. If production is encountered, a tapered string of production casing will be set according to USGS rules and regulations.

RECEIVED

SEP 3 1971

RECEIVED

SEP 2 1971

U. S. GEOLOGICAL SURVEY
ARTESIA, NEW MEXICO

IN ABOVE SPACE DESCRIBE PROPOSED PROGRAM: If proposal is to deepen or plug back, give data on present productive zone. If proposal is to drill or deepen directionally, give pertinent data on direction, distance and measured and true vertical depths. Give blowout preventer program, if any.

24.

SIGNED

Eddie H. Mahoney

TITLE

Engineer

(This space for Federal or State office use)

PERMIT NO.

DECLARED WATER BASIN-2-71

C MENT BEHIND THE
CASING MUST BE CIRCULATED
DATEAPPROVED
SEP - 2 1971
H. L. BECKMAN
ACTING DISTRICT ENGINEERTHIS APPROVAL IS RESCINDED IF OPERATIONS
ARE NOT COMMENCED WITHIN 3 MONTHS
EXPIRES
SEP - 2 1971
See Instructions On Reverse SideNOTIFY USGS IN SUFFICIENT TIME TO
WITNESS CEMENTING THE 7" CASING.

N. MEXICO OIL CONSERVATION COMMISSION
WELL LOCATION AND ACREAGE DEDICATION PLAT

Form C-102
Supersedes C-128
Effective 1-1-65

All distances must be from the outer boundaries of the Section.

Operator YATES PETROLEUM CORPORATION			Lease FEDERAL LYD		Well No. 4
Unit Letter E	Section 27	Township 17 S	Range 25 E	County Eddy	
Actual Footage Location of Well: 2310 feet from the North line and 990 feet from the West line					
Ground Level Elev. 3541	Producing Formation San Andres		Pool Und. Eagle Creek S.A.		Dedicated Acreage: 40 Acres

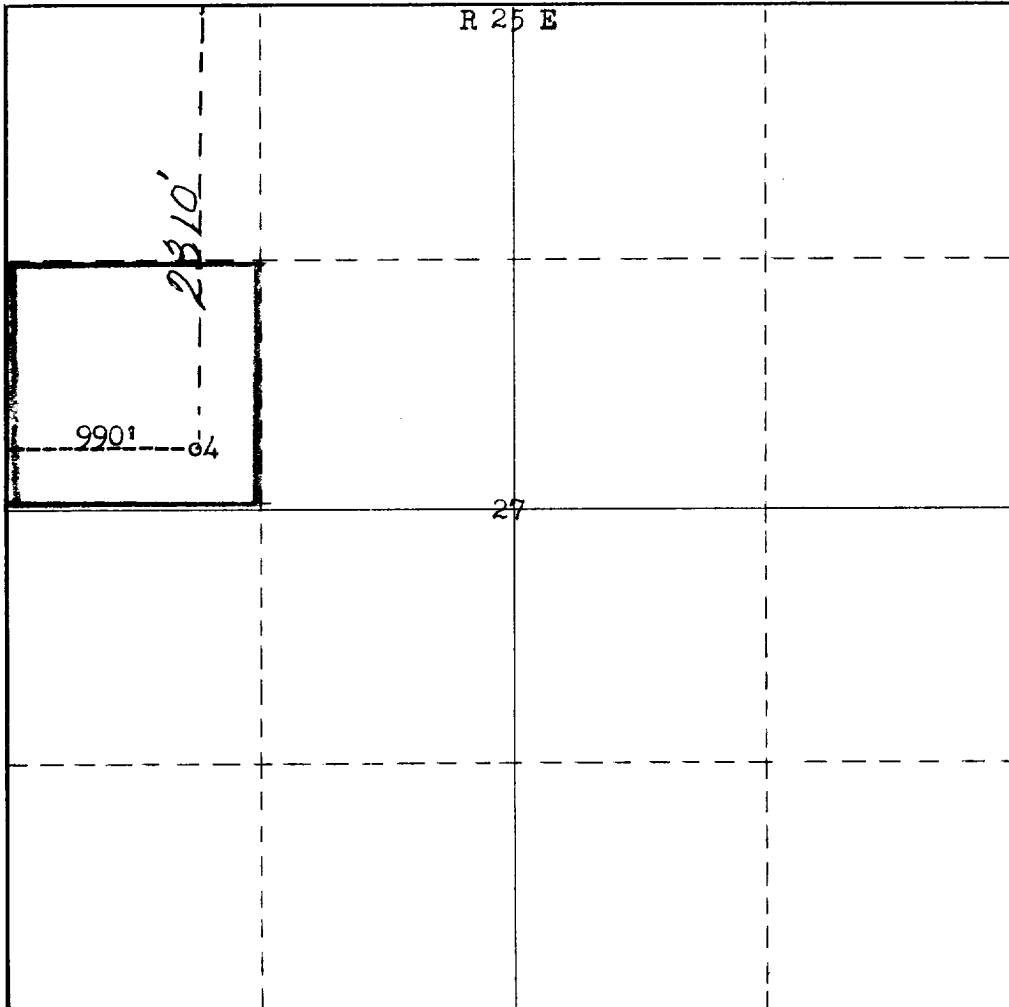
1. Outline the acreage dedicated to the subject well by colored pencil or hachure marks on the plat below.
2. If more than one lease is dedicated to the well, outline each and identify the ownership thereof (both as to working interest and royalty).
3. If more than one lease of different ownership is dedicated to the well, have the interests of all owners been consolidated by communitization, unitization, force-pooling, etc?

☐ Yes ☐ No If answer is "yes," type of consolidation _____

If answer is "no," list the owners and tract descriptions which have actually been consolidated. (Use reverse side of this form if necessary.) _____

No allowable will be assigned to the well until all interests have been consolidated (by communitization, unitization, forced-pooling, or otherwise) or until a non-standard unit, eliminating such interests, has been approved by the Commission.

R 25 E



CERTIFICATION

I hereby certify that the information contained herein is true and complete to the best of my knowledge and belief.

Eddie M. Mahfood
Name
Eddie M. Mahfood

Position
Engineer

Company
Yates Pet. Corporation

Date
9-2-71

RECEIVED
I hereby certify that the well location shown on this plat was plotted from field notes of actual survey made by me or under my supervision and that the same is true and correct to the best of my knowledge and belief.
SEP 2 1971
U.S. DEPT. OF THE INTERIOR
ANTHONY J. BROWN
MES H. 8810

Date Surveyed

August 31st, 1971

Registered Professional Engineer
and/or Land Surveyor

James H. Brown
Certificate No. **542**

