

UNITED STATES
DEPARTMENT OF THE INTERIOR
GEOLOGICAL SURVEY

30-015-20500

APPLICATION FOR PERMIT TO DRILL, DEEPEN, OR PLUG BACK

1a. TYPE OF WORK

DRILL ☒DEEPEN ☐PLUG BACK ☐

b. TYPE OF WELL

OIL
WELL ☒GAS
WELL ☐OTHER ☐

2. NAME OF OPERATOR

Yates Petroleum Corporation

3. ADDRESS OF OPERATOR

207 South 4th Street - Artesia, New Mexico 88210

4. LOCATION OF WELL (Report location clearly and in accordance with any State requirements.)*

At surface

2310' FNL & 1650 FEL of Sec. 28-17S-25E

At proposed prod. zone

14. DISTANCE IN MILES AND DIRECTION FROM NEAREST TOWN OR POST OFFICE*

Approx. 6 miles West of Artesia, New Mexico

10. DISTANCE FROM PROPOSED* 1650'

LOCATION TO NEAREST
PROPERTY OR LEASE LINE, FT.
(Also to nearest drlg. unit line, if any)18. DISTANCE FROM PROPOSED LOCATION*
TO NEAREST WELL, DRILLING, COMPLETED,
OR APPLIED FOR, ON THIS LEASE, FT.

16. NO. OF ACRES IN LEASE

19. PROPOSED DEPTH

Approx. 1500'

17. NO. OF ACRES ASSIGNED
TO THIS WELL

40

20. ROTARY OR CABLE TOOLS

Rotary

21. ELEVATIONS (Show whether DF, RT, GR, etc.)

3556' GL

22. APPROX. DATE WORK WILL START*

Immediately

23.

PROPOSED CASING AND CEMENTING PROGRAM

SIZE OF HOLE	SIZE OF CASING	WEIGHT PER FOOT	SETTING DEPTH	QUANTITY OF CEMENT
13 3/4"	10 3/4"	32#	200'	Circulate
9 7/8"	7"	23#	1100'	Circulate
6 1/4"	4 1/2") Tapered 5 1/2")	9.5# 14#	450') 1500' 1150')	Circulate

It is our intention to drill a 13 3/4" hole to approx. 200', set 10 3/4" casing, if necessary, and circulate, then reduce hole to 9 7/8", drill to approx. 1100', set 7" surface csg. and circ., reduce hole to 6 1/4", drill to a TD of approx. 1500'. If production is encountered, a tapered string of production casing will be set according to the USGS rules and regulations.

IN ABOVE SPACE DESCRIBE PROPOSED PROGRAM: If proposal is to deepen or plug back, give data on present productive zone and proposed new productive zone. If proposal is to drill or deepen directionally, give pertinent data on subsurface locations and measured and true vertical depths. Give blowout preventer program, if any.

24.

SIGNED

E. L. BEEKMAN

TITLE

Engineer

DATE

9-10-71

(This space for Federal or State office use)

PERMIT NO.

APPROVED

SIGNATURES OF APPROVAL, IF ANY:

AUG 10 1971
R. L. BEEKMAN
ACTING DISTRICT ENGINEER

THIS APPROVAL IS RESCINDED IF OPERATIONS
ARE NOT COMMENCED WITHIN 3 MONTHS.
EXPIRES DEC 10 1971
*See Instructions On Reverse Side

DECLARED WATER BASIN
CEMENT BEHIND THE
CASING MUST BE CIRCULATED
DATE

NOTIFY USGS IN SUFFICIENT TIME TO
WITNESS CEMENTING THE CASING.

MEXICO OIL CONSERVATION COMMISSION
WELL LOCATION AND ACREAGE DEDICATION PLAT

Form C-102
Supersedes C-128
Effective 1-1-65

All distances must be from the outer boundaries of the Section.

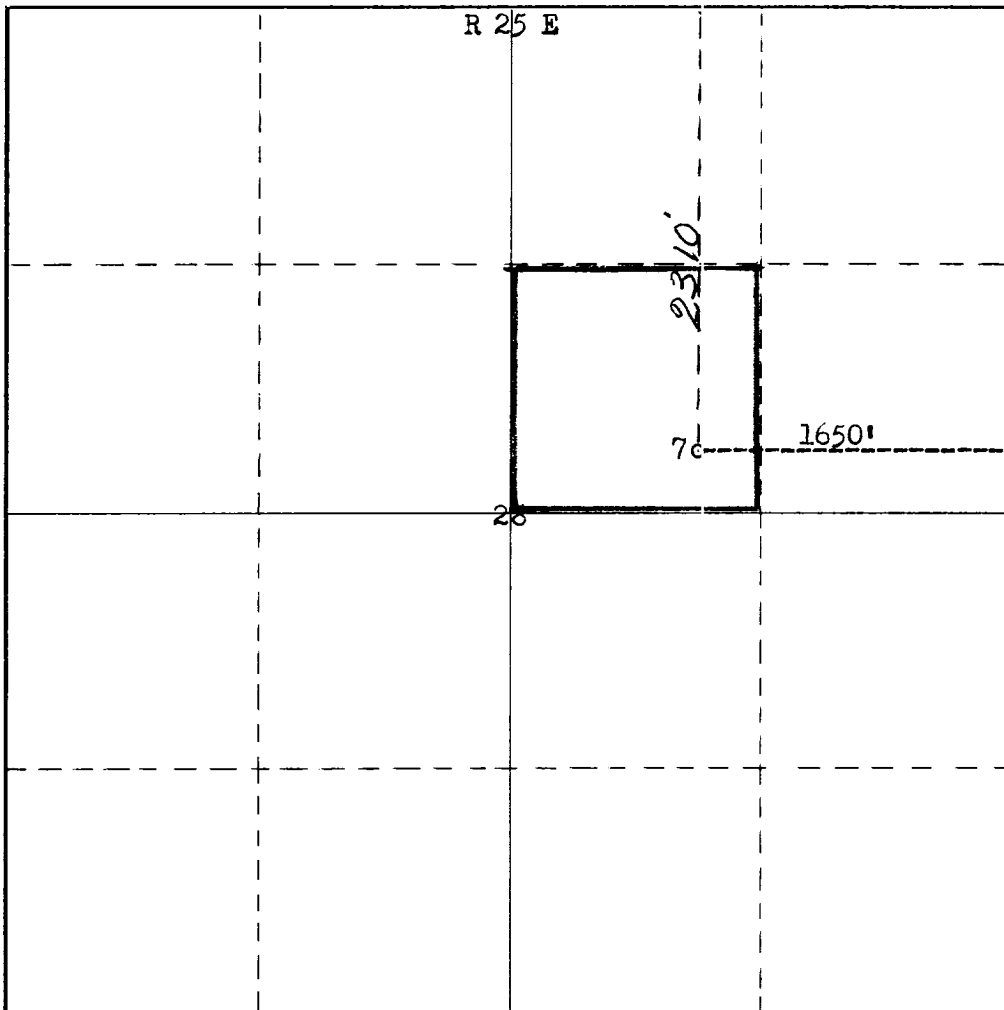
Operator YATES PETROLEUM CORPORATION			Lessee FEDERAL BZ		Well No. 7
Unit Letter G	Section 28	Township 17S	Range 25E	County Eddy	
Actual Footage Location of Well: 2310 feet from the North line and 1650 feet from the East line					
Ground Level Elev. 3556	Producing Formation San Andres		Pool Und. Eagle Creek S.A.		Dedicated Acreage: 40 Acres

1. Outline the acreage dedicated to the subject well by colored pencil or hachure marks on the plat below.
2. If more than one lease is dedicated to the well, outline each and identify the ownership thereof (both as to working interest and royalty).
3. If more than one lease of different ownership is dedicated to the well, have the interests of all owners been consolidated by communitization, unitization, force-pooling, etc?

☐ Yes ☐ No If answer is "yes," type of consolidation _____

If answer is "no," list the owners and tract descriptions which have actually been consolidated. (Use reverse side of this form if necessary.) _____

No allowable will be assigned to the well until all interests have been consolidated (by communitization, unitization, forced-pooling, or otherwise) or until a non-standard unit, eliminating such interests, has been approved by the Commission.



RECEIVED
SEP 10 1971
CERTIFICATION
I hereby certify that the information contained herein is true and complete to the best of my knowledge and belief.

Name
Eddie M. Mahfood

Position
Engineer

Company
Yates Pet. Corporation

Date
9-10-71

REGISTERED LAND SURVEYOR
STATE OF TEXAS
NO. 542
JAMES H. BROWN

I hereby certify that the well location shown on this plat was derived from field notes of actual surveys made by me or under my supervision, and that the same is true and correct to the best of my knowledge and belief.

Date Surveyed
September 8th, 1971

Registered Professional Engineer and/or Land Surveyor

James H. Brown
Certificate No. **542**

0 330 660 990 1320 1650 1980 2310 2640 2000 1500 1000 500 0

T 17 S

RECEIVED
SEP 13 1971
D. C. J.
ARTS & CRAFTS