

NO. OF COPIES RECEIVED	5
DISTRIBUTION	
SANTA FE	1
FILE	1
U.S.G.S.	2
LAND OFFICE	
OPERATOR	1

# NEW MEXICO OIL CONSERVATION COMMISSION

RECEIVED

SEP 17 1971

O. C. C.

ARTESIA, OFFICE

## APPLICATION FOR PERMIT TO DRILL, DEEPEN, OR PLUG BACK

1a. Type of Work b. Type of Well OIL WELL <input checked="" type="checkbox"/> GAS WELL <input type="checkbox"/> OTHER <input type="checkbox"/> DRILL <input checked="" type="checkbox"/> DEEPEN <input type="checkbox"/> PLUG BACK <input type="checkbox"/> SINGLE ZONE <input type="checkbox"/> MULTIPLE ZONE <input type="checkbox"/>		7. Unit Agreement Name
2. Name of Operator Yates Petroleum Corporation		8. Farm or Lease Name Jackson Estate BY
3. Address of Operator 207 South 4th Street - Artesia, New Mexico 88210		9. Well No. 5
4. Location of Well UNIT LETTER H LOCATED 2310 FEET FROM THE North LINE 330 FEET FROM THE East LINE OF SEC. 21 TWP. 17S RGE. 25E NMPM		10. Field and Pool, or Wildcat Eagle Creek S.A.
12. County Eddy		
19. Proposed Depth Approx. 1500'		19A. Formation San Andres
20. Rotary or C.T. Rotary		
21. Elevations (Show whether DF, RT, etc.) 3546' GL	21A. Kind & Status Plug. Bond Blanket	21B. Drilling Contractor Cactus Drilling Co.
22. Approx. Date Work will start Immediately		

23.

### PROPOSED CASING AND CEMENT PROGRAM

SIZE OF HOLE	SIZE OF CASING	WEIGHT PER FOOT	SETTING DEPTH	SACKS OF CEMENT	EST. TOP
13 3/4"	10 3/4"	32#	200'	Circulate	
9 7/8"	7"	23#	1100'	Circulate	
6 1/4"	4 1/2") Tapered 5 1/2")	9.5# 14#	450' 1050' } 1500'	Circulate	

It is our intention to drill a 13 3/4" hole to approx. 200', set 10 3/4" casing, if necessary, and circulate, then reduce hole to 9 7/8", drill to approx. 1100', set 7" surface casing and circulate, reduce hole to 6 1/4" drill to a total depth of approx. 1500'. If production is encountered, a tapered string of production casing will be set according to the NMOCC rules and regulations.

APPROVAL VALID  
FOR 90 DAYS UNLESS  
DRILLING COMMENCED,  
EXPIRES 12-17-71

IN ABOVE SPACE DESCRIBE PROPOSED PROGRAM: IF PROPOSAL IS TO DEEPEN OR PLUG BACK, GIVE DATA ON PRESENT PRODUCTIVE ZONE AND PROPOSED NEW PRODUCTIVE ZONE. GIVE BLOWOUT PREVENTER PROGRAM, IF ANY.

I hereby certify that the information above is true and complete to the best of my knowledge and belief.

Signed Eddie H. Lundy Title Engineer Date 9-17-71

(This space for State Use)

APPROVED BY W. A. Gressett TITLE OIL AND GAS INSPECTOR DATE SEP 17 1971

CONDITIONS OF APPROVAL, IF ANY:

Cement must be circulated to  
surface behind 10 3/4" & 7" casing

Notify N.M.O.C.C. in sufficient  
time to witness cementing,  
the 7" casing.

**NEW MEXICO OIL CONSERVATION COMMISSION  
WELL LOCATION AND ACREAGE DEDICATION PLAT**

Form C-102  
Supersedes C-128  
Effective 1-1-65

All distances must be from the outer boundaries of the Section.

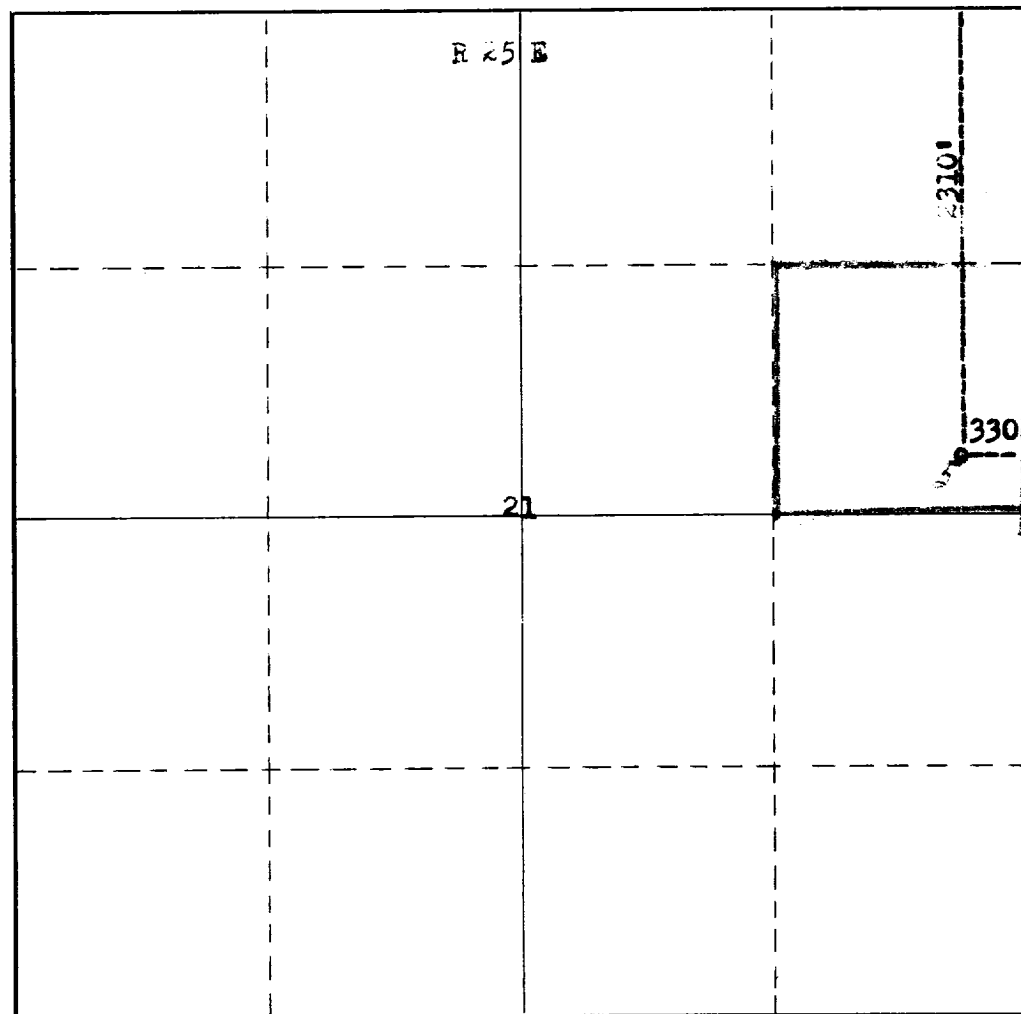
Operator <b>Yates Petroleum Corporation</b>			Lease <b>Jackson Estate BY</b> <del>XXXXXXXXXXXX</del>		Well No. <b>5</b>
Unit Letter <b>H</b>	Section <b>21</b>	Township <b>17 South</b>	Range <b>25 East</b>	County <b>Eddy</b>	
Actual Footage Location of Well: <b>2310</b> feet from the <b>North</b> line and <b>330</b> feet from the <b>East</b> line					
Ground Level Elev: <b>3546</b>	Producing Formation <b>San Andres</b>		Pool <b>Und. Eagle Creek S.A.</b>		Dedicated Acreage: <b>40</b> Acres

1. Outline the acreage dedicated to the subject well by colored pencil or hachure marks on the plat below.
2. If more than one lease is dedicated to the well, outline each and identify the ownership thereof (both as to working interest and royalty).
3. If more than one lease of different ownership is dedicated to the well, have the interests of all owners been consolidated by communitization, unitization, force-pooling, etc?

☐ Yes    ☐ No    If answer is "yes," type of consolidation \_\_\_\_\_

If answer is "no," list the owners and tract descriptions which have actually been consolidated. (Use reverse side of this form if necessary.) \_\_\_\_\_

No allowable will be assigned to the well until all interests have been consolidated (by communitization, unitization, forced-pooling, or otherwise) or until a non-standard unit, eliminating such interests, has been approved by the Commission.



**CERTIFICATION**

I hereby certify that the information contained herein is true and complete to the best of my knowledge and belief.

*Eddie M. Mahfood*

Name  
**Eddie M. Mahfood**

Position  
**Engineer**

Company  
**Yates Pet. Corporation**

Date  
**8-30-71**

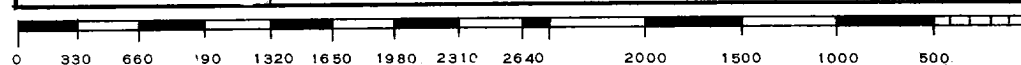
I hereby certify that the well location shown on this plat was plotted from field notes of actual surveys made by me or under my supervision, and that the same is true and correct to the best of my knowledge and belief.

Date Surveyed  
**August 19, 1971**

Registered Professional Engineer and/or Land Surveyor

*James H. Brown*

Certificate No.  
**542**



T  
17  
S