

UNITED STATES  
DEPARTMENT OF THE INTERIOR  
GEOLOGICAL SURVEY

30-045-26567

APPLICATION FOR PERMIT TO DRILL, DEEPEN, OR PLUG BACK

1a. TYPE OF WORK  
DRILL ☒ DEEPEN ☐ PLUG BACK ☐

b. TYPE OF WELL  
OIL WELL ☒ GAS WELL ☐ OTHER ☐  
SINGLE ZONE ☐ MULTIPLE ZONE ☐

2. NAME OF OPERATOR  
Yates Petroleum Corporation

3. ADDRESS OF OPERATOR  
207 South 4th Street - Artesia, New Mexico 88210

4. LOCATION OF WELL (Report location clearly and in accordance with any State requirements.)\*  
At surface 990' FNL & 2310' FWL of Sec. 28-17S-25E  
At proposed prod. zone

14. DISTANCE IN MILES AND DIRECTION FROM NEAREST TOWN OR POST OFFICE\*  
Approx. 5 miles west of Artesia, N.M.

10. DISTANCE FROM PROPOSED\* 990'  
LOCATION TO NEAREST  
PROPERTY OR LEASE LINE, FT.  
(Also to nearest drlg. unit line, if any)

18. DISTANCE FROM PROPOSED LOCATION\*  
TO NEAREST WELL, DRILLING, COMPLETED,  
OR APPLIED FOR, ON THIS LEASE, FT.

16. NO. OF ACRES IN LEASE

19. PROPOSED DEPTH  
Approx. 1500'

17. NO. OF ACRES ASSIGNED  
TO THIS WELL  
40

20. ROTARY OR CABLE TOOLS  
Rotary

21. ELEVATIONS (Show whether DF, RT, GR, etc.)  
3567' GL

22. APPROX. DATE WORK WILL START\*  
Immediately

23. PROPOSED CASING AND CEMENTING PROGRAM

SIZE OF HOLE	SIZE OF CASING	WEIGHT PER FOOT	SETTING DEPTH	QUANTITY OF CEMENT
13 3/4"	10 3/4"	32#	200'	Circulate
9 7/8"	7"	23#	1100'	Circulate
6 1/4"	4 1/2") 5 1/2") Tapered	9.5# 14#	450' ) 1050' ) 1500'	Circulate

It is our intention to drill a 13 3/4" hole to approx. 200', set 10 3/4" casing, if necessary, and circulate, then reduce hole to 9 7/8", drill to approx. 1100', set 7" surface casing and circulate, reduce hole to 6 1/4" drill to a total depth of approx. 1500'. If production is encountered, a tapered string of production casing will be set according to the USGS rules and regulations.

RECEIVED

SEP 24 1971

RECEIVED

SEP 23 1971

U. S. GEOLOGICAL SURVEY  
ARTESIA, NEW MEXICO

O. C. C.

IN ABOVE SPACE DESCRIBE PROPOSED PROGRAM: If proposal is to deepen or plug back, give pertinent data on present productive zone and proposed new productive zone. If proposal is to drill or deepen directionally, give pertinent data on subsurface locations and measured and true vertical depths. Give blowout preventer program, if any.

24. SIGNED Eddie M. Galt TITLE Engineer DATE 9-23-71

(This space for Federal or State office use)

PERMIT NO.

APPROVAL DATE

DECLARED WATER BASIN

APPROVED  
SEP 23 1971

H. L. BEEKMAN  
ACTING DISTRICT ENGINEER

APPROVED IF OPERATIONS  
ARE NOT COMMENCED WITHIN 3 MONTHS.  
DEC 23 1971

\*See Instructions On Reverse Side

CEMENT BEHIND THE  
CASING MUST BE CIRCULATED

NOTIFY USGS IN SUFFICIENT TIME TO  
CEMENTING THE CASING.

N MEXICO OIL CONSERVATION COMMISSION  
WELL LOCATION AND ACREAGE DEDICATION PLAT

Form C-102  
Supersedes C-128  
Effective 1-1-65

All distances must be from the outer boundaries of the Section.

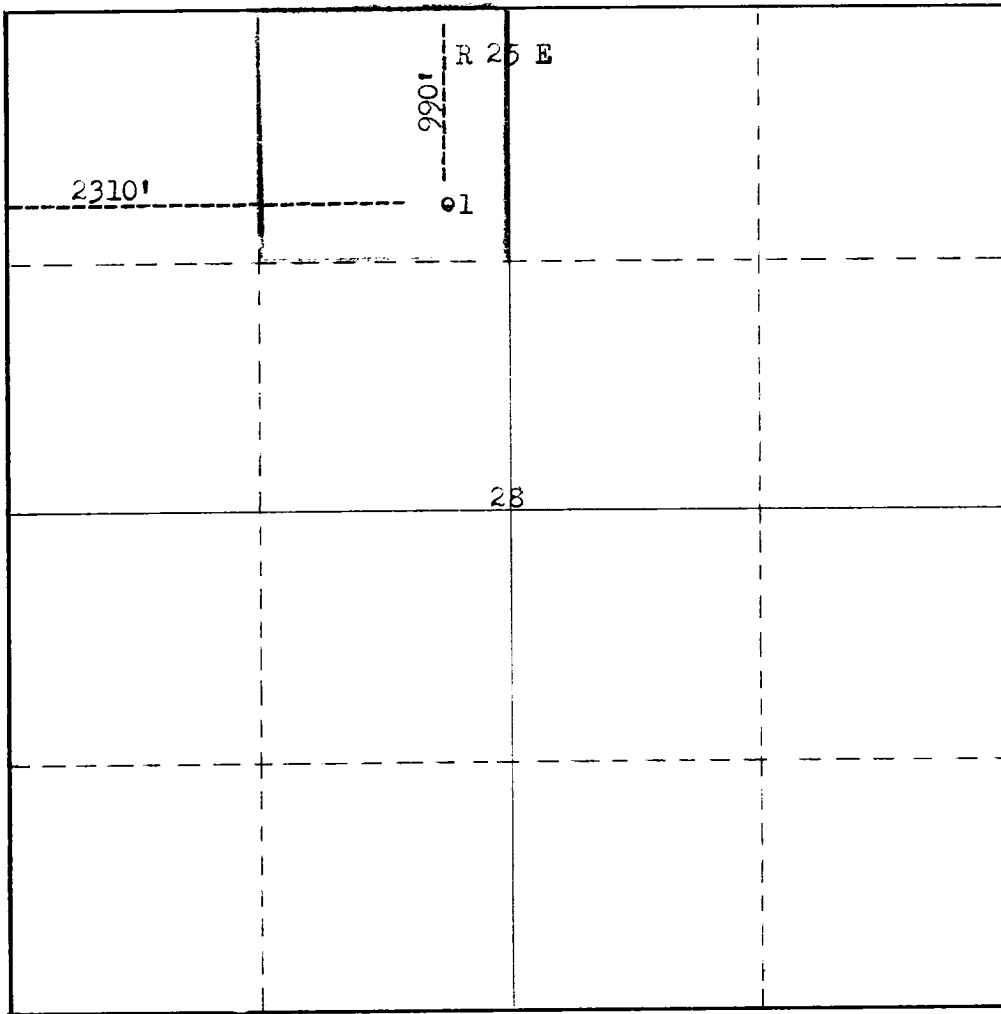
Operator <b>Yates Petroleum Corp.</b>			Lease <b>Federal CD</b>		Well No. <b>1</b>
Unit Letter <b>C</b>	Section <b>28</b>	Township <b>17 South</b>	Range <b>25 East</b>	County <b>Eddy</b>	
Actual Footage Location of Well:					
<b>990</b> feet from the <b>North</b> line and		<b>2310</b> feet from the <b>West</b> line			
Ground Level Elev. <b>3567</b>	Producing Formation <b>San Andres</b>		Pool <b>Und. Eagle Creek S.A.</b>	Dedicated Acreage: <b>40</b> Acres	

1. Outline the acreage dedicated to the subject well by colored pencil or hatchure marks on the plat below.
2. If more than one lease is dedicated to the well, outline each and identify the ownership thereof (both as to working interest and royalty).
3. If more than one lease of different ownership is dedicated to the well, have the interests of all owners been consolidated by communitization, unitization, force-pooling, etc?

☐ Yes ☐ No If answer is "yes," type of consolidation \_\_\_\_\_

If answer is "no," list the owners and tract descriptions which have actually been consolidated. (Use reverse side of this form if necessary.) \_\_\_\_\_

No allowable will be assigned to the well until all interests have been consolidated (by communitization, unitization, forced-pooling, or otherwise) or until a non-standard unit, eliminating such interests, has been approved by the Commission.



CERTIFICATION

I hereby certify that the information contained herein is true and complete to the best of my knowledge and belief.

Name  
**Eddie M. Mahfood**  
Position  
**Engineer**  
Company  
**Yates Pet. Corporation**  
Date  
**9-23-71**

I hereby certify that the well location shown on this plat is based on field notes of actual surveys made by me or under my supervision, and that the same is true and correct to the best of my knowledge and belief.

Date Surveyed  
**Sept. 17, 1971**  
Registered Professional Engineer and/or Land Surveyor  
**James H. Brown**  
Certificate No.  
**542**

T  
17  
S

