

NO. OF COPIES RECEIVED
DISTRIBUTION
SANTA FE
FILE
U.S.G.S.
LAND OFFICE
OPERATOR

RECEIVED
NEW MEXICO OIL CONSERVATION COMMISSION
NOV 8 1971
O. C. C.
ARTESIA, OFFICE

30-015-20531
Form C-101
Revised 1-1-65

5A. Indicate Type of Lease
STATE [X] FEE []
5. State Oil & Gas Lease No.
B-2077
7. Unit Agreement Name
8. Farm or Lease Name
N. G. Phillips-State
9. Well No.
10
10. Field and Pool, or Wildcat
Artesia, Q, GB, SA
12. County
Eddy
19. Proposed Depth
2100
19A. Formation
San Andres
20. Rotary or C.T.
C. T.
21. Elevations (Show whether DF, RT, etc.)
3635 Ground
21A. Kind & Status Plug. Bond
Active
21B. Drilling Contractor
Pool Drlg. Co.
22. Approx. Date Work will start
Nov. 15, 1971

APPLICATION FOR PERMIT TO DRILL, DEEPEN, OR PLUG BACK
1a. Type of Work
b. Type of Well
DRILL [X] DEEPEN [] PLUG BACK []
OIL WELL [] GAS WELL [] OTHER (Water Injection) SINGLE ZONE [X] MULTIPLE ZONE []
2. Name of Operator
Penroc Oil Corporation
3. Address of Operator
P. O. Drawer 831, Midland, Texas 79701
4. Location of Well
UNIT LETTER G LOCATED 2645 FEET FROM THE South LINE
AND 1325 FEET FROM THE East LINE OF SEC. 27 TWP. 17S RGE. 28E NMPM
11. Proposed Depth
2100
11A. Formation
San Andres
11B. Drilling Contractor
Pool Drlg. Co.
12. Approx. Date Work will start
Nov. 15, 1971

Table with 6 columns: SIZE OF HOLE, SIZE OF CASING, WEIGHT PER FOOT, SETTING DEPTH, SACKS OF CEMENT, EST. TOP. Rows include 12" hole, 9-5/8" casing, 32.30 weight, 500 setting depth, 250 sacks, and 150' top.

Case No. 4607
Order No. R-4212

APPROVAL VALID
FOR 90 DAYS UNLESS
DRILLING COMMENCED,
EXPIRES 2-8-72

IN ABOVE SPACE DESCRIBE PROPOSED PROGRAM: IF PROPOSAL IS TO DEEPEN OR PLUG BACK, GIVE DATA ON PRESENT PRODUCTIVE ZONE AND PROPOSED NEW PRODUCTIVE ZONE. GIVE BLOWOUT PREVENTER PROGRAM, IF ANY.

I hereby certify that the information above is true and complete to the best of my knowledge and belief.
Signed John B. Battle Title President Date 11/8/71

(This space for State Use)
APPROVED BY W.A. Gressett TITLE OIL AND GAS INSPECTOR DATE NOV 8 1971

CONDITIONS OF APPROVAL, IF ANY Notify N.M.O.C.C. in sufficient time to witness cementing the all casing

NE MEXICO OIL CONSERVATION COMMISSION
WELL LOCATION AND ACREAGE DEDICATION PLAT

Form C-102
Supersedes C-128
Effective 1-1-65

All distances must be from the outer boundaries of the Section.

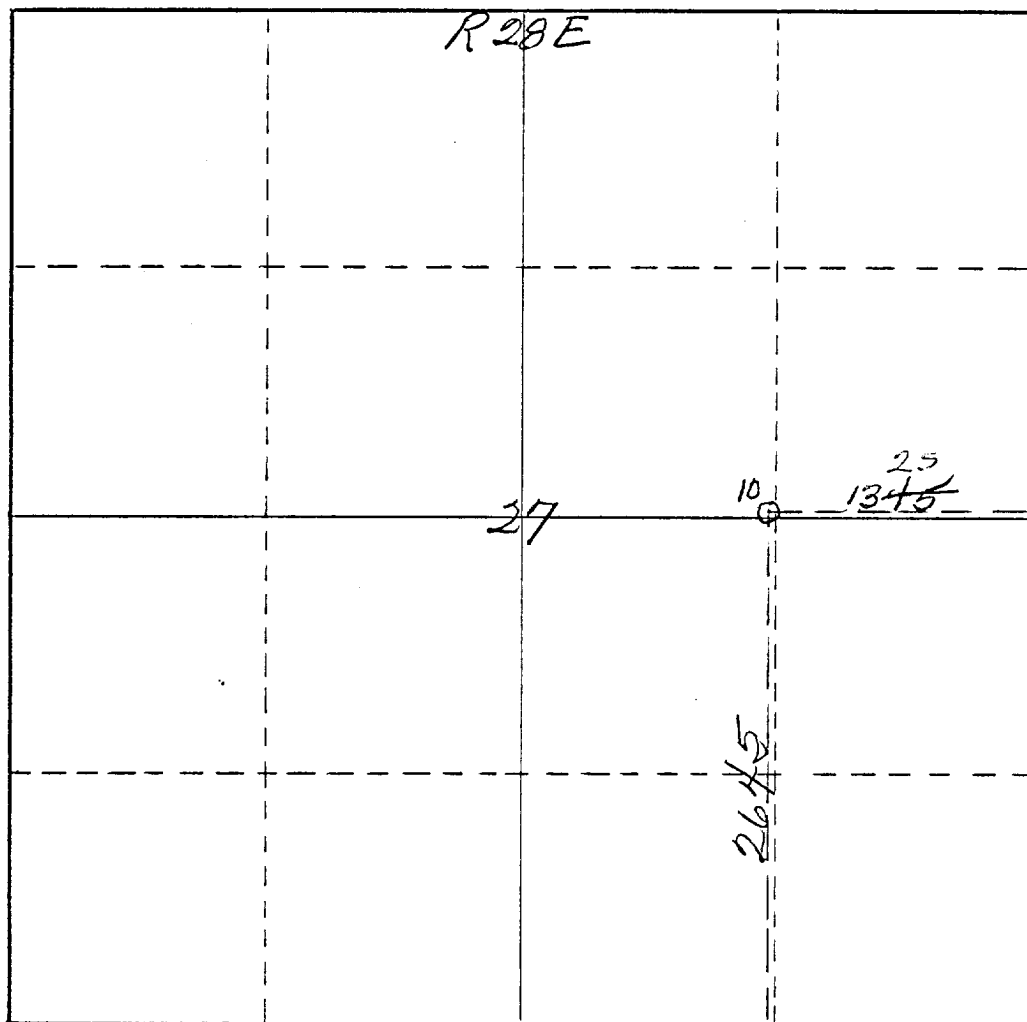
Operator PENROC OIL CORPORATION			Lease State NG Phillips-STATE		Well No. 10
Unit Letter G	Section 27	Township 17S	Range 28E	County Eddy	
Actual Footage Location of Well: 2645 feet from the South line and 1325 feet from the East line					
Ground Level Elev. 3635	Producing Formation Grayburg (Water Injection)			Pool Artesia, Queen, GB, SA	Dedicated Acreage: Acres

1. Outline the acreage dedicated to the subject well by colored pencil or hachure marks on the plat below.
2. If more than one lease is dedicated to the well, outline each and identify the ownership thereof (both as to working interest and royalty).
3. If more than one lease of different ownership is dedicated to the well, have the interests of all owners been consolidated by communitization, unitization, force-pooling, etc?

☐ Yes ☐ No If answer is "yes," type of consolidation _____

If answer is "no," list the owners and tract descriptions which have actually been consolidated. (Use reverse side of this form if necessary.) _____

No allowable will be assigned to the well until all interests have been consolidated (by communitization, unitization, forced-pooling, or otherwise) or until a non-standard unit, eliminating such interests, has been approved by the Commission.



CERTIFICATION

I hereby certify that the information contained herein is true and complete to the best of my knowledge and belief.

Name **John B. Little**
Position **President**

Company **PENROC OIL CORPORATION**

Date **11/8/71**

I hereby certify that the well location shown on this plat was plotted from field notes of actual surveys made by me or under my supervision, and that the same is true and correct to the best of my knowledge and belief.

Date Surveyed **November 1st 1971**
Registered Professional Engineer
and/or Land Surveyor

Certificate No. **542**

