

UNITED STATES
DEPARTMENT OF THE INTERIOR
GEOLOGICAL SURVEY

30-015-20786

APPLICATION FOR PERMIT TO DRILL, DEEPEN, OR PLUG BACK

1a. TYPE OF WORK

DRILL ☒

DEEPEN ☐

PLUG BACK ☐

b. TYPE OF WELL

OIL WELL ☒

GAS WELL ☐

OTHER

SINGLE ZONE ☒

MULTIPLE ZONE ☐

2. NAME OF OPERATOR

McCLELLAN OIL CORPORATION

3. ADDRESS OF OPERATOR

Box 848 - ROSWELL, NEW MEXICO 88201

4. LOCATION OF WELL (Report location clearly and in accordance with any State requirements.)

At surface

660 FN & 860 FEL

At proposed prod. zone

14. DISTANCE IN MILES AND DIRECTION FROM NEAREST TOWN OR POST OFFICE*

10 MILES NORTH OF LOCO HILLS

15. DISTANCE FROM PROPOSED* LOCATION TO NEAREST PROPERTY OR LEASE LINE, FT. (Also to nearest drlg. unit line, if any)

660'

16. NO. OF ACRES IN LEASE

1780

17. NO. OF ACRES ASSIGNED TO THIS WELL

40

18. DISTANCE FROM PROPOSED LOCATION* TO NEAREST WELL, DRILLING, COMPLETED, OR APPLIED FOR, ON THIS LEASE, FT.

1 MILE

19. PROPOSED DEPTH

2500

20. ROTARY OR CABLE TOOLS

CABLE TOOLS

21. ELEVATIONS (Show whether DF, RT, GR, etc.)

3702' GL

22. APPROX. DATE WORK WILL START*

JANUARY 5, 1973

23.

PROPOSED CASING AND CEMENTING PROGRAM

SIZE OF HOLE	SIZE OF CASING	WEIGHT PER FOOT	SETTING DEPTH	QUANTITY OF CEMENT
12 1/4"	8 5/8"	20 LB	375	100 SX
8"	7"	18 LB	1775	SET
6 3/4"	5 1/2"	15 LB	2500	150 SX

WILL DRILL TO TOP OF SAN ANDRES FORMATION TO TEST YATES, QUEEN, GRAYBURG AND PREMIER SANDS. IF PRODUCTION IS INDICATED SET CASING AND ATTEMPT COMPLETION.

RECEIVED
DEC 21 1972
U.S. GEOLOGICAL SURVEY
ALBUQUERQUE, N.M.

IN ABOVE SPACE DESCRIBE PROPOSED PROGRAM: If proposal is to deepen or plug back, give data on present productive zone and proposed new productive zone. If proposal is to drill or deepen directionally, give pertinent data on subsurface locations and measured and true vertical depths. Give blowout preventer program, if any.

24.

SIGNED

Joe L. McClellan

TITLE

PRESIDENT

DATE

OCTOBER 24, 1972

(This space for Federal or State office use)

PERMIT NO.

APPROVAL DATE

DEC 26 1972

APPROVED BY

CONDITIONS OF APPROVAL, IF ANY:

Jan G. Rarick

TITLE

DISTRICT ENGINEER

DATE

DEC 26 1972

THIS APPROVAL IS VALID FOR 12 MONTHS IF OPERATIONS ARE NOT COMMENCED WITHIN 1 MONTHS
EXPIRES 1-26-73

*See Instructions On Reverse Side

**MEXICO OIL CONSERVATION COMMISSION
WELL LOCATION AND ACREAGE DEDICATION PLAT**

Form C-102
Supersedes C-128
Effective 1-1-65

All distances must be from the outer boundaries of the Section.

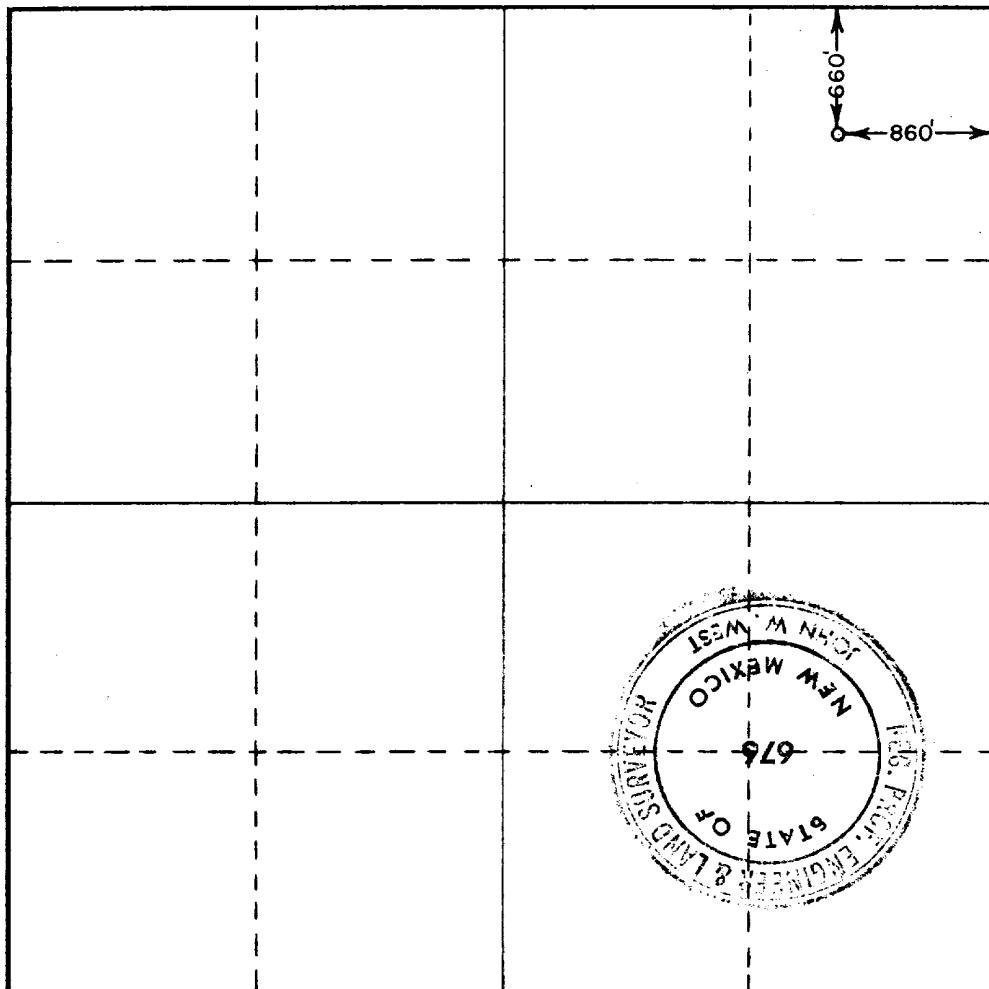
Operator MCCLELLAN OIL CORP.			Lease HINKLE FEDERAL		Well No. 1
Unit Letter A	Section 9	Township 16 SOUTH	Range 29 EAST	County EDDY	
Actual Footage Location of Well: 660 feet from the NORTH line and 860 feet from the EAST line					
Ground Level Elev. 3702	Producing Formation GRAYBURG		Pool WILDCAT		Dedicated Acreage: 40 Acres

1. Outline the acreage dedicated to the subject well by colored pencil or hatchure marks on the plat below.
2. If more than one lease is dedicated to the well, outline each and identify the ownership thereof (both as to working interest and royalty).
3. If more than one lease of different ownership is dedicated to the well, have the interests of all owners been consolidated by communitization, unitization, force-pooling, etc?

☐ Yes ☐ No If answer is "yes," type of consolidation _____

If answer is "no," list the owners and tract descriptions which have actually been consolidated. (Use reverse side of this form if necessary.) _____

No allowable will be assigned to the well until all interests have been consolidated (by communitization, unitization, forced-pooling, or otherwise) or until a non-standard unit, eliminating such interests, has been approved by the Commission.

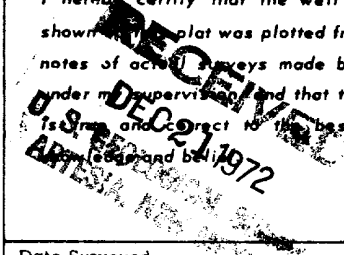


CERTIFICATION

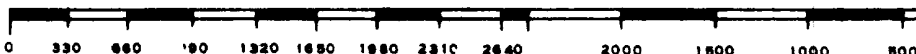
I hereby certify that the information contained herein is true and complete to the best of my knowledge and belief.

Jack L. McClellan
 Name **JACK L. MCCLELLAN**
 Position **PRESIDENT**
 Company **MCCLELLAN OIL CORP.**
 Date **12/12/72**

I hereby certify that the well location shown on this plat was plotted from field notes of actual surveys made by me or under my supervision, and that the same is true and correct to the best of my knowledge and belief.



Date Surveyed **10-24-1972**
 Registered Professional Engineer and/or Land Surveyor
John W. West
 Certificate No. **676**





McCLELLAN OIL CORPORATION
Box 848
ROSWELL, NEW MEXICO 88201

PLAN OF DEVELOPMENT FOR THE HINKLE No. 1

