

| | |
|------------------------|-----|
| NO. OF COPIES RECEIVED | 6 |
| DISTRIBUTION | |
| SANTA FE | 1 |
| FILE | 1 ✓ |
| U.S.G.S. | 2 |
| LAND OFFICE | 1 |
| OPERATOR | 1 |

NEW MEXICO OIL CONSERVATION COMMISSION

30-015-20811

Form C-101
Revised 1-1-65

| |
|------------------------------------------------------------------------|
| 5A. Indicate Type of Lease |
| STATE <input checked="" type="checkbox"/> FEE <input type="checkbox"/> |
| 5. State Oil & Gas Lease No. |
| NM E-7435 |

APPLICATION FOR PERMIT TO DRILL, DEEPEN, OR PLUG BACK

| | | | |
|------------------------------------------------------------------------------------------------------------------------------------------------------------------------------------------------------------------------------------------------------------------------------------------------------------------------------|-------------------------------|--------------------------------|----------------------------------|
| 1a. Type of Work | | 7. Unit Agreement Name | |
| b. Type of Well DRILL <input checked="" type="checkbox"/> DEEPEN <input type="checkbox"/> PLUG BACK <input type="checkbox"/> OIL WELL <input checked="" type="checkbox"/> GAS WELL <input type="checkbox"/> OTHER <input type="checkbox"/> SINGLE ZONE <input type="checkbox"/> MULTIPLE ZONE <input type="checkbox"/> | | 8. Farm or Lease Name | |
| 2. Name of Operator | | 9. Well No. | |
| John R. Gray | | 2 | |
| 3. Address of Operator | | 10. Field and Pool, or Wildcat | |
| P. O. Box 1046, Artesia, New Mexico 88210 | | E. Empire - Yates & Rivers | |
| 4. Location of Well UNIT LETTER <u>I</u> LOCATED <u>1650</u> FEET FROM THE <u>South</u> LINE AND <u>330</u> FEET FROM THE <u>East</u> LINE OF SEC. <u>28</u> TWP. <u>17-S</u> RGE. <u>28-E</u> NMMPM | | 12. County | |
| | | ddy | |
| 19. Proposed Depth | | 19A. Formation | 20. Rotary or C.T. |
| 850' | | 7 Rivers | C. T. |
| 21. Elevations (Show whether DF, RT, etc.) | 21A. Kind & Status Plug. Bond | 21B. Drilling Contractor | 22. Approx. Date Work will start |
| 3682 GL | Blanket | Charles Powell | 2-20-73 |

PROPOSED CASING AND CEMENT PROGRAM

| SIZE OF HOLE | SIZE OF CASING | WEIGHT PER FOOT | SETTING DEPTH | SACKS OF CEMENT | EST. TOP |
|--------------|----------------|-----------------|---------------|-----------------|----------|
| 8 5/8" | 7" | 20 lbs. | 450' | | |
| 6 3/4" | 5 1/2" | 13-15 lbs. | 850' | | |

We propose to drill to approximately 450', set 7" casing, shut water off then drill on to approximately 850', set 5 1/2" casing, pull 7" and circulate cement on 5 1/2" casing.

APPROVAL VALID
FOR 90 DAYS UNLESS
DRILLING COMMENCED,
EXPIRES 5-20-73

IN ABOVE SPACE DESCRIBE PROPOSED PROGRAM: IF PROPOSAL IS TO DEEPEN OR PLUG BACK, GIVE DATA ON PRESENT PRODUCTIVE ZONE AND PROPOSED NEW PRODUCTIVE ZONE. GIVE BLOWOUT PREVENTER PROGRAM, IF ANY.

I hereby certify that the information above is true and complete to the best of my knowledge and belief.

Signed John R. Gray Title Owner Date 2-19-73
(This space for State Use)

APPROVED BY W. A. Gessert TITLE OIL AND GAS INSPECTOR DATE FEB 20 1973

CONDITIONS OF APPROVAL, IF ANY:

Notify N.M.O.C.C. in sufficient
time to witness cementing
the 5 1/2" casing

Cement must be circulated to
surface behind 5 1/2" casing

NEW MEXICO OIL CONSERVATION COMMISSION
WELL LOCATION AND ACREAGE DEDICATION PLAT

Form C-102
Supersedes C-128
Effective 1-1-65

All distances must be from the outer boundaries of the Section.

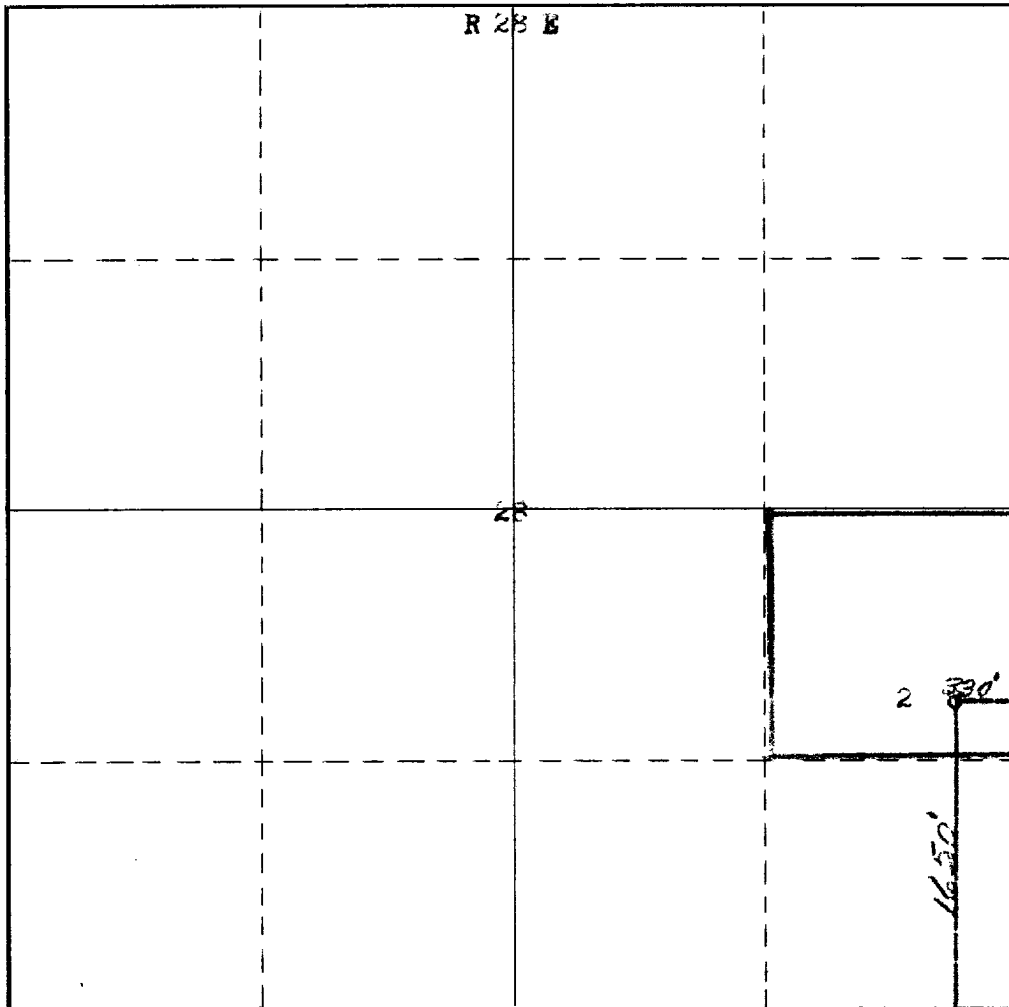
| | | | | |
|-------------------------------------------------------------------------------------------------------------------------------|------------------------------------|-----------------------------|---------------------------------------|------------------------|
| Operator John R. Gray | | Lease Prattville | | Well No. 2 |
| Unit Letter I | Section 28 | Township 17 South | Range 28 East | County Logan |
| Actual Footage Location of Well: 1050 feet from the South line and 230 feet from the East line | | | | |
| Ground Level Elev. 368x | Producing Formation X-SR | Pool East Empire | Dedicated Acreage: 40 Acres | |

- Outline the acreage dedicated to the subject well by colored pencil or hachure marks on the plat below.
- If more than one lease is dedicated to the well, outline each and identify the ownership thereof (both as to working interest and royalty).
- If more than one lease of different ownership is dedicated to the well, have the interests of all owners been consolidated by communitization, unitization, force-pooling, etc?

☐ Yes ☐ No If answer is "yes," type of consolidation _____

If answer is "no," list the owners and tract descriptions which have actually been consolidated. (Use reverse side of this form if necessary.) _____

No allowable will be assigned to the well until all interests have been consolidated (by communitization, unitization, forced-pooling, or otherwise) or until a non-standard unit, eliminating such interests, has been approved by the Commission.



CERTIFICATION

I hereby certify that the information contained herein is true and complete to the best of my knowledge and belief.

Name

Position

Company

Date

I hereby certify that the well location shown on this plat was plotted from field notes of actual surveys made by me or under my supervision, and that the same is true and correct to the best of my knowledge and belief.

Date Surveyed

February 12th, 1973
Registered Professional Engineer
and/or Land Surveyor

Certificate No.

542