

UNITED STATES
DEPARTMENT OF THE INTERIOR
GEOLOGICAL SURVEY

APPLICATION FOR PERMIT TO DRILL, DEEPEN, OR PLUG BACK

1a. TYPE OF WORK

DRILL ☒DEEPEN ☐PLUG BACK ☐

b. TYPE OF WELL

OIL
WELL ☐GAS
WELL ☒OTHER ☐SINGLE
ZONE ☐MULTIPLE
ZONE ☒

2. NAME OF OPERATOR

Samedan Oil Corporation ✓

MAR 27 1973

3. ADDRESS OF OPERATOR

2207 Wilco Building, Midland, Texas 79701

B. E. E.

4. LOCATION OF WELL (Report location clearly and in accordance with any State requirements.)

At surface

ARTESIA, OFFICE

1980' FS & EL, Sec. 7, T-16-S, R-28-E

At proposed prod. zone

SAME

14. DISTANCE IN MILES AND DIRECTION FROM NEAREST TOWN OR POST OFFICE*

10 miles northeast of Artesia

MAR 21 1973

15. DISTANCE FROM PROPOSED*

LOCATION TO NEAREST
PROPERTY OR LEASE LINE, FT.
(Also to nearest drlg. line, if any)

1980'

16. NO. OF ACRES IN LEASE

1514.98

17. NO. OF ACRES ASSIGNED

320

18. DISTANCE FROM PROPOSED LOCATION*

TO NEAREST WELL, DRILLING, COMPLETED,
OR APPLIED FOR, ON THIS LEASE, FT.

--

19. PROPOSED DEPTH

9700'

20. ROTARY OR CABLE TOOLS

Rotary

21. ELEVATIONS (Show whether DF, RT, GR, etc.)

3669.5' G.L.

22. APPROX. DATE WORK WILL START*

Upon Approval

23.

PROPOSED CASING AND CEMENTING PROGRAM

SIZE OF HOLE	SIZE OF CASING	WEIGHT PER FOOT	SETTING DEPTH	QUANTITY OF CEMENT
30"	20"	Conductor pipe	50'	Circ. to surface
11"	8 5/8"	24#	1800'	Circ. to surface
7 7/8"	4 1/2"	10.5 & 11.6#	9700'	400 sacks

Plan to drill 30" hole to 50', run 20" conductor pipe and cement to surface. Drill 11" hole to 1800', run 8 5/8" casing and cement to surface. Drill 7 7/8" hole to 9700', run 4 1/2" casing. WOC 12 hrs. and test to 1000%. (DSTs may be run on any formation indicating production during this stage of drilling.) If production is indicated, will complete in productive zone(s) according to Rules and Regulations of New Mexico Oil Conservation Commission. All pipe-setting and cementing operations will be conducted according to requirements of the proper authorities.

IN ABOVE SPACE DESCRIBE PROPOSED PROGRAM: If proposal is to deepen or plug back, give data on present productive zone and proposed new productive zone. If proposal is to drill or deepen directionally, give pertinent data on subsurface locations and measured and true vertical depths. Give blowout preventer program, if any.

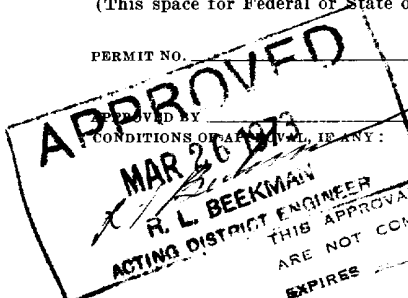
24.

William S. McCuen

(This space for Federal or State office use)

TITLE Production Superintendent DATE 3-15-73

PERMIT NO.



APPROVED
MAR 20 1973
R. L. BECKMAN
ACTING DISTRICT ENGINEER
THIS APPROVAL IS RESCINDED IF OPERATIONS
ARE NOT COMMENCED WITHIN 3 MONTHS.
EXPIRES JUN 26 1973
*See Instructions On Reverse Side

APPROVAL DATE

DATE

Instructions

General: This form is designed for submitting proposals to perform certain well operations, as indicated, on all types of lands and leases for appropriate action by either a Federal or a State agency, or both, pursuant to applicable Federal and/or State laws and regulations. Any necessary special instructions concerning the use of this form and the number of copies to be submitted, particularly with regard to local, area, or regional procedures and practices, either are shown below or will be issued by, or may be obtained from, the local Federal and/or State office.

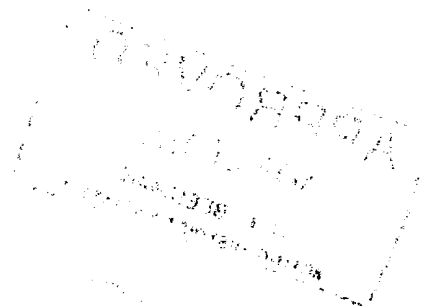
Item 1: If the proposal is to redrill to the same reservoir at a different subsurface location or to a new reservoir, use this form with appropriate notations. Consult applicable State or Federal regulations concerning subsequent work proposals or reports on the well.

Item 4: If there are no applicable State requirements, locations on Federal or Indian land should be described in accordance with Federal requirements. Consult local State or Federal office for specific instructions.

Item 14: Needed only when location of well cannot readily be found by road from the land or lease description. A plat, or plats, separate or on this reverse side, showing the roads to, and the surveyed location of, the well, and any other required information, should be furnished when required by Federal or State agency offices.

Items 15 and 18: If well is to be, or has been directionally drilled, give distances for subsurface location of hole in any present or objective production zone.

Item 22: Consult applicable Federal or State regulations, or appropriate officials, concerning approval of the proposal before operations are started.



NEW MEXICO OIL CONSERVATION COMMISSION
WELL LOCATION AND ACREAGE DEDICATION PLAT

Form C-102
Supersedes C-128
Effective 1-1-65

All distances must be from the outer boundaries of the Section

Operator SAMEDAN OIL CORP.			Lease CROW FLATS Fed.		Well No. 1
Unit Letter J	Section 7	Township 16 SOUTH	Range 28 EAST	County EDDY	
Actual Footage Location of Well:					
1980 feet from the SOUTH line and		1980 feet from the EAST line			
Ground Level Elev. 3669.5	Producing Formation Morrow	Pool Wildcat	Dedicated Acreage: 320 Acres		

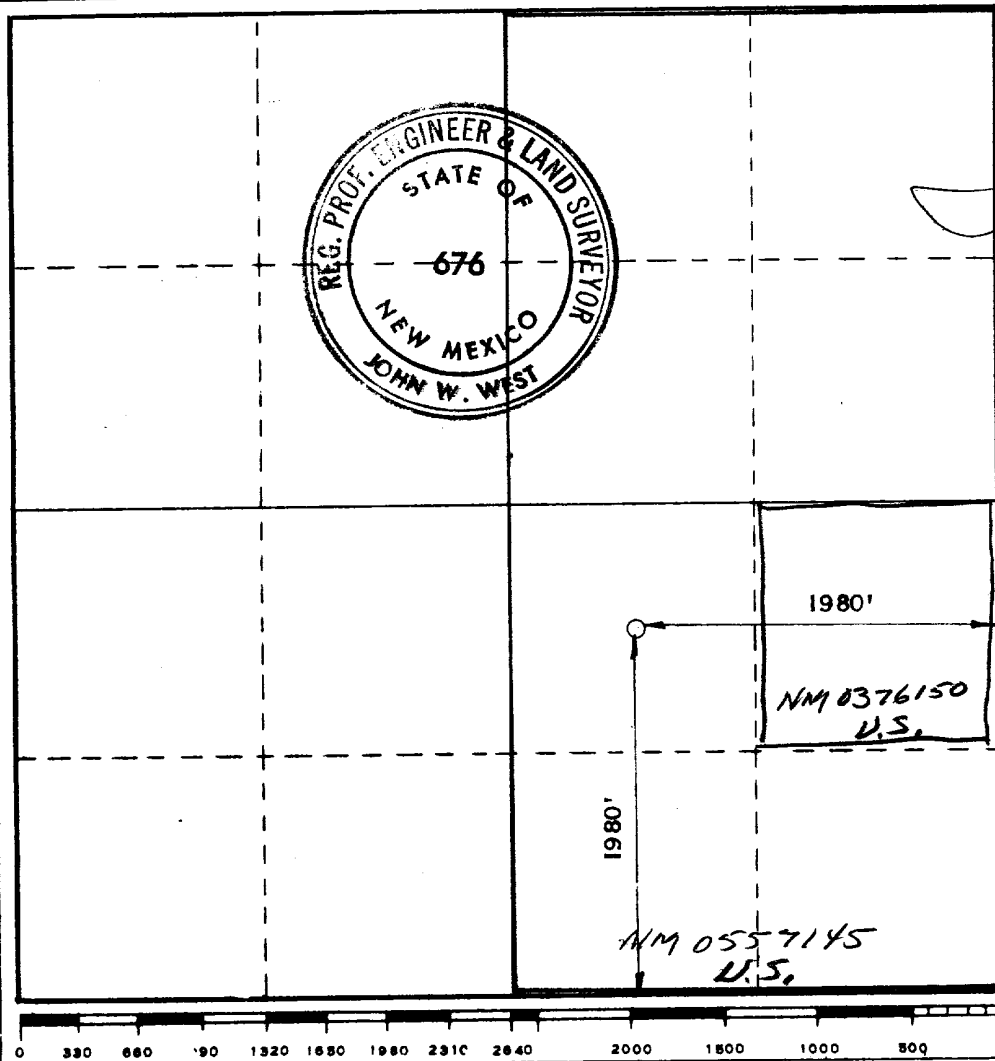
1. Outline the acreage dedicated to the subject well by colored pencil or hachure marks on the plat below.
2. If more than one lease is dedicated to the well, outline each and identify the ownership thereof (both as to working interest and royalty).
3. If more than one lease of different ownership is dedicated to the well, have the interests of all owners been consolidated by communitization, unitization, force-pooling, etc?

☐ Yes ☒ No If answer is "yes," type of consolidation _____

If answer is "no," list the owners and tract descriptions which have actually been consolidated. (Use reverse side of this form if necessary.) Action being taken for communitization

No allowable will be assigned to the well until all interests have been consolidated by communitization, unitization, forced-pooling, or otherwise) or until a non-standard unit, eliminating such interests has been approved by the Commission.

RECEIVED
MAR 21 1973
U.S. DEPARTMENT OF THE INTERIOR
BUREAU OF LAND SURVEY
ALBUQUERQUE, NEW MEXICO



CERTIFICATION

I hereby certify that the information contained herein is true and complete to the best of my knowledge and belief.

Name
William S. McCuen
Position
Production Superintendent
Company
Samedan Oil Corporation
Date
3-15-73

I hereby certify that the well location shown on this plat was plotted from field notes of actual surveys made by me or under my supervision, and that the same is true and correct to the best of my knowledge and belief.

Date Surveyed
MARCH 14, 1973
Registered Professional Engineer and/or Land Surveyor
John W. West
Certificate No.
676

DEVELOPMENT PLAN FOR SURFACE USE

Crow Flats Federal No. 1
1980' FS & EL
Sec. 7, T-16-S, R-28-E
Eddy County, New Mexico

The following is a discussion of the pertinent information concerning any possible effect which Samedan's proposed drilling of the above well may have on the environment or surface condition of the southeast quarter (SE/4) of Section 7, T-16-S, R-28-E, and surrounding acreage.

Item 1: Attached as a portion of the "Development Plan" are plats, labeled Plat No. 1 and Plat No. 2, showing the existing ranch and county roads to be used in reaching the proposed location, the presence of all surface water supplies within one (1) mile, and the proposed layout of the drilling pad, rig, and mud pits to be used in drilling the above well. These items are discussed further below.

Item 2: Drilling Pad and Pit Location - The drilling pad and reserve pits will be constructed as shown on Plat No. 1. The location will be cleared and leveled and used in its natural condition without caliche. The reserve pit will be lined with a suitable plastic or rubber lining to prevent the loss of drilling fluids by seepage into the surface.

Item 3: Roads - Access to the proposed location will be gained by use of the existing county roads and unimproved ranch roads. The unimproved ranch roads will be graded and leveled sufficient to provide access to vehicular traffic, with minor improvement only as required.

Item 4: Producing Facilities and Flowlines - In the event that the proposed well is completed as a producer, necessary surface producing facilities will be installed on the drilling pad at the well. Only enough flowline would be required to connect the well to such facilities.

Item 5: Drilling Water Supply - Drilling water will be obtained through arrangements with the surface owner (or lessee on Federal land) and will be taken from the existing surface water supplies or wells within approximately three (3) miles of the proposed location.

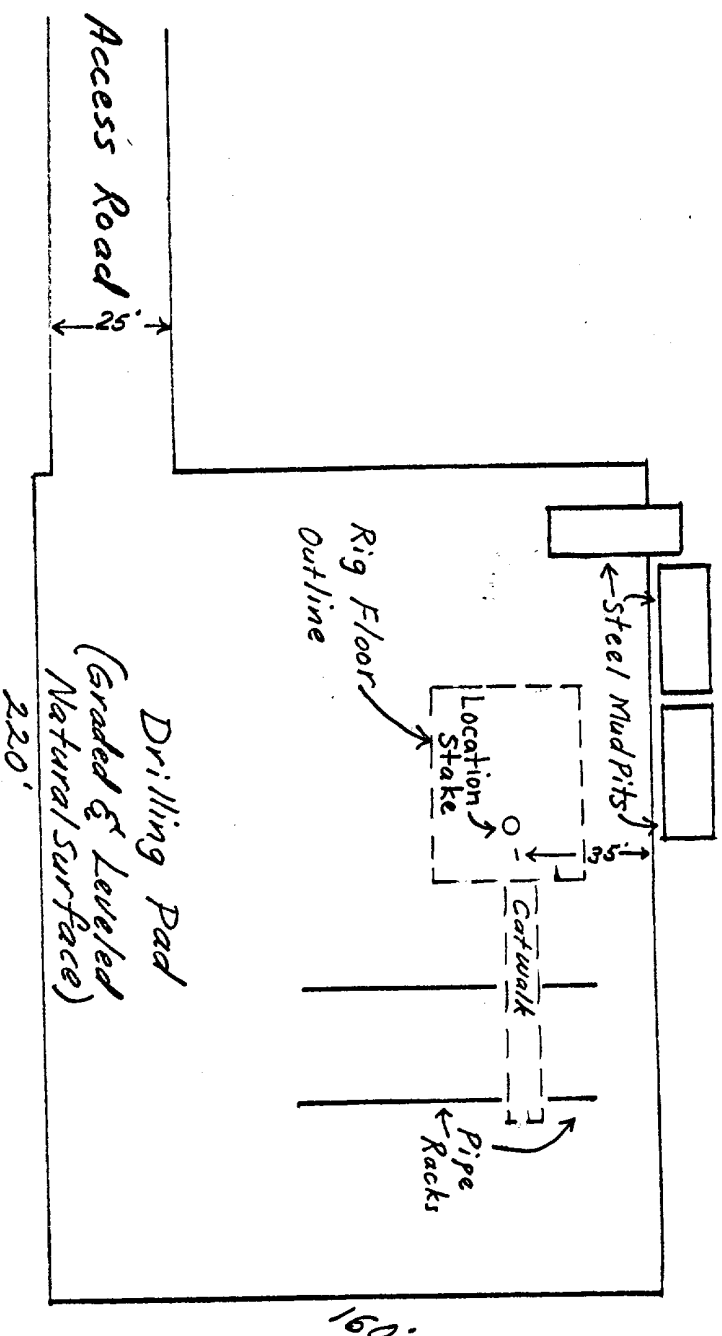
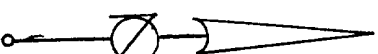
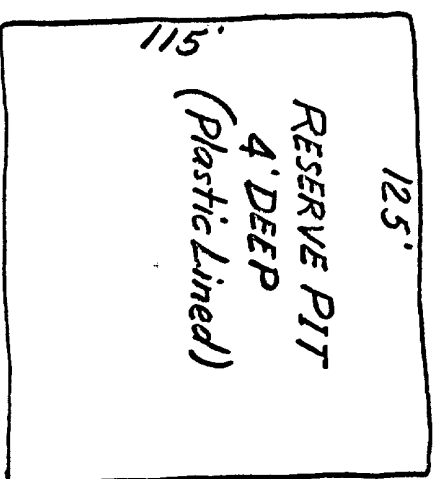
Item 6: Waste Disposal - Wastes (such as drilling mud sacks, barrels, containers, scrap material, and junk) resulting from the drilling of this well will be disposed of by hauling to an approved dumping site.

Item 7: Disposal of Brine and Produced Salt Water - Waste brine and produced salt water will be collected in metal storage tanks and trucked to an approved disposal well.

Item 8: Restoration of Surface - Following completion of the well, the mud pits will be filled and leveled consistent with the general terrain, and every effort will be made to leave the surface as undisturbed as possible.

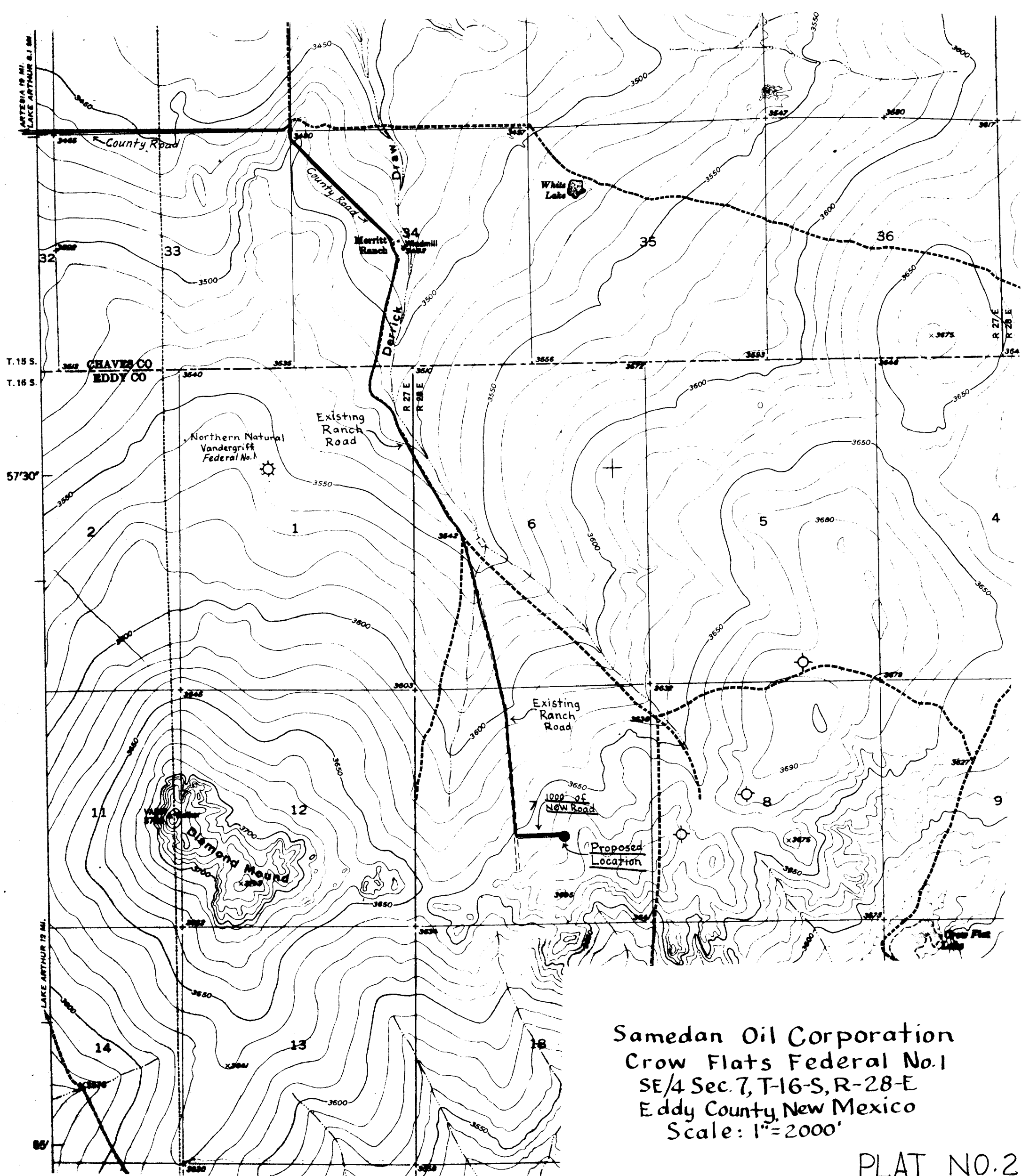
Item 9: Blowout Prevention and Drilling Mud Program - See copy of attached proposed drilling program.

RECEIVED
MAR 21 1973
U.S. DEPARTMENT OF THE INTERIOR
BUREAU OF LAND MANAGEMENT



Samedan Oil Corporation
Crow Flats Federal No.1
SE/4 Sec.7T-16-S, R-28-E
Eddy County, New Mexico
Scale: 1"= 50'

PLAT NO.1



Samedan Oil Corporation
Crow Flats Federal No.1
SE/4 Sec.7, T-16-S, R-28-E
Eddy County, New Mexico
Scale: 1"=2000'

PLAT NO.2

SAMEDAN OIL CORPORATION
WELL PROGRAM SHEET

WELL: Crow Flats Federal No. 1

FIELD: Wildcat

OPERATOR: Samedan Oil Corporation

ESTIMATED

TOTAL DEPTH: 9700'

OBJECTIVE: Morrow (Gas)

1. LOCATION: 1980' FS & EL, Sec. 7, T-16-S, R-28-E

2. ELEVATION: 3669.5 above MSL

3. MEASUREMENTS:

All measurements will be taken from the Kelly Bushing. The permanent datum will be the bradenhead flange. The distance from the bradenhead flange will be recorded on the logs and drilling report. An instrument will be utilized to record drilling time.

4. HOLE SIZE:

0 to 400'	17 1/2" hole	(If hole condition is stable at 400', reduce
400' to 1800'	11" hole	to 11" hole and drill to 1800' prior to setting
1800' to T.D.	7 7/8" hole	casing)

5. HOLE DEVIATION:

Maximum hole deviation will be 5°, limited to 1 1/2° per 100' interval. Deviation surveys will be run at least once each 500'. The results of each survey will be recorded on the Daily Drilling Report.

6. ESTIMATED FORMATION TOPS:

Yates	150'	Wolfcamp	6200'
San Andres	1700'	Strawn	8200'
Abo	5000'	Atoka	8600'
		Morrow	8900'

7. DRILLING SAMPLES:

Save one (1) set of drilling samples from 1000' to T.D. Drilling time to be recorded by Geolograph. Manually recorded 10' drilling time to be recorded from 1000' to T.D.

8. BLOWOUT PREVENTERS:

Dual ram, 3000 psi W.P. hydraulically operated preventers and a 3000 psi W.P. Hydril to be installed on 8 5/8" casing prior to drilling plug, equipped to Samedan's specifications.

9. DRILLING MUD:

0' to 1800' - Fresh water and gel, with sufficient viscosity to clean the hole. Use paper to control seepage losses.

1800' to 6000' - Fresh water with lime, circulating the reserve pit.

6000' to T.D. - At 6000', mud up with Ben-Ex for a viscosity of 32-36 and a weight of 8.8 to 9.0#/gal. At 8000', reduce the water loss to 10 to 12 prior to drilling the Atoka and Morrow intervals.

RECEIVED

MAR 11 1973

AMERICAN OIL COMPANY
CROW FLATS FIELD

10. CASING PROGRAM:

Surface

60' of 20" O.D. conductor pipe (set with rathole machine) (NOTE: 400' of 12 3/4" O.D. 34#/ft. ST & C csg. will be set if hole conditions require it)

Intermediate

1800' of 8 5/8" O.D. 24#/ft. K-55 ST & C casing

Oil String

9700' of 4 1/2" O.D. 11.6#/ft. K-55 & N-80 casing

11. CEMENTING:

Surface Casing - Conductor Pipe

Cement conductor pipe with Ready-Mix cement. If 12 3/4" csg. is required, cement with 400 sks. of Class "C" cement with 2% CaCl₂. WOC time - 12 hrs. Test to 600 psi prior to drilling plug

Intermediate

Cement 8 5/8" csg. as follows:

750 sks. of Dowell Litewater w/4% gel plus 5 lbs./sk. of Kolite plus 1/4 lb. per sk. of Celloflake followed by 200 sks. of Class "H" with 2% CaCl₂.

Oil String

Oil string and cementing program to be developed depending on results of open-hole tests and log evaluations

RECEIVED

MAR 21 1973

WILLIAM S. McCuen
DIVISION SUPERINTENDENT

12. LOGGING:

- 1 - Gamma Ray - BHC Acoustic log
- 1 - Dual Induction Lateralog

13. FORMATION TESTING:

Possible DSTs in the following zones:
Strawn, Atoka, and Morrow

14. CORING:

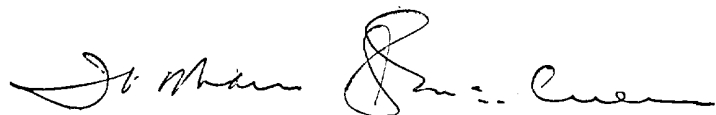
NONE

15. SPECIAL SURVEYS:

Mud logging unit will be used from 5500' to T.D.

16. COMPLETION PROGRAM:

To be furnished as required



William S. McCuen
Division Production Superintendent

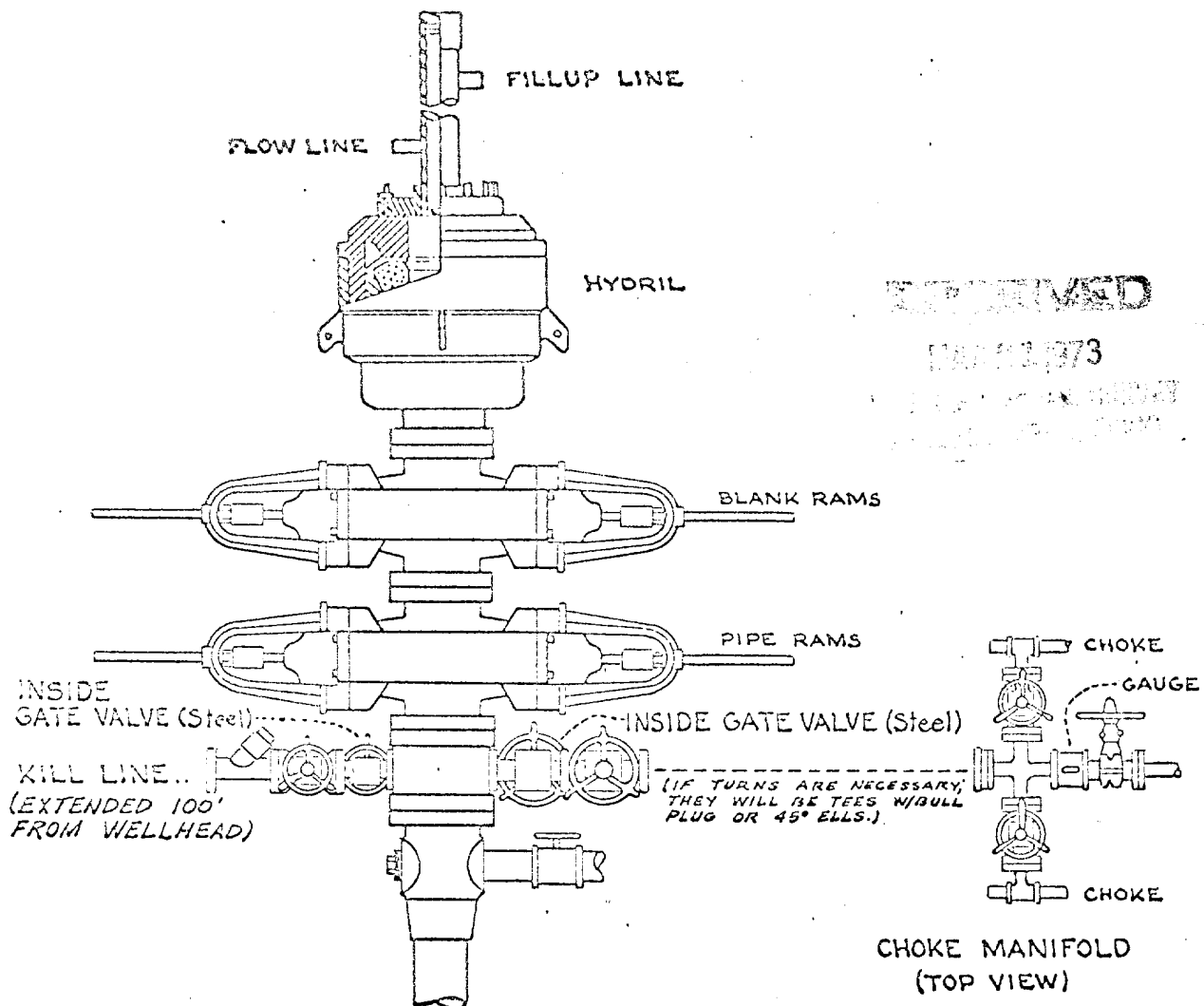
Bob E. Frizzell
Hobbs, New Mexico
505-393-2512 (Office)
505-392-6080 (Home)
505-393-7266 (Mobil)

William S. McCuen
Midland, Texas
915-683-5536 (Office)
915-694-7342 (Home)

David E. Holley
Midland, Texas
915-683-5536 (Office)
915-684-6970 (Home)

Cliff W. Matthews
Midland, Texas
915-683-5536 (Office)
915-682-0354 (Res.)

BLOWOUT PREVENTER
FOR
MEDIUM PRESSURE WELLS
(900 SERIES MIN.)



NOTE: Choke manifold to be either 3" or 4".

To be 900 Series, Minimum.

REQUIREMENTS

1. Kill Line and Choke Manifold maybe connected to Braden Head at Area Supervisor's discretion in event of low substructure.
2. Hydraulic closing unit required.
3. Steel lines from B.O.P. to closing unit required.

SAMEDAN OIL CORPORATION
ARDMORE, OKLAHOMA
223-4110