

UNITED STATES
DEPARTMENT OF THE INTERIOR
GEOLOGICAL SURVEY

APPLICATION FOR PERMIT TO DRILL, DEEPEN, OR PLUG BACK

1a. TYPE OF WORK

DRILL ☒DEEPEN ☐PLUG BACK ☐

b. TYPE OF WELL

OIL
WELL ☒GAS
WELL ☐

OTHER

SINGLE
ZONE ☒MULTIPLE
ZONE ☒

2. NAME OF OPERATOR

ARWOOD LTD.

3. ADDRESS OF OPERATOR

P.O. Box 64548, Dallas, Texas 75206

4. LOCATION OF WELL (Report location clearly and in accordance with any State requirements*)

At surface

660' from South

1346' from West

At proposed prod. zone

14. DISTANCE IN MILES AND DIRECTION FROM NEAREST TOWN OR POST OFFICE*

8 miles N.E. Loco Hills

10. DISTANCE FROM PROPOSED*

LOCATION TO NEAREST

PROPERTY OR LEASE LINE, FT.

(Also to nearest drlg. unit line, if any)

660' S.

16. NO. OF ACRES IN LEASE

320

17. NO. OF ACRES ASSIGNED

TO THIS WELL

40

18. DISTANCE FROM PROPOSED LOCATION*

TO NEAREST WELL, DRILLING, COMPLETED,
OR APPLIED FOR, ON THIS LEASE, FT.

1346' W.

19. PROPOSED DEPTH

3300'

20. ROTARY OR CABLE TOOLS

Rotary

21. ELEVATIONS (Show whether DF, RT, GR, etc.)

3834 GR

22. APPROX. DATE WORK WILL START*

4-30-73

23.

PROPOSED CASING AND CEMENTING PROGRAM

SIZE OF HOLE	SIZE OF CASING	WEIGHT PER FOOT	SETTING DEPTH	QUANTITY OF CEMENT
6 1/4	5 1/2	15.5 #	3300 Ft.	300 SX
10 3/4	8 5/8	20#	300 Ft.	100 SX

Propose to drill above well with rotary tools to not more than 3300'. Run casing to TD. Perforate and frac Premier sands. These producing zones are associated with waterflood operation on Loe Federal. The gas on this project is depleted so no blow out preventer will be necessary. At the end of the wells productive life the location will be back filled, leveled and cleaned.

IN ABOVE SPACE DESCRIBE PROPOSED PROGRAM: If proposal is to deepen or plug back, give data on present productive zone and proposed new productive zone. If proposal is to drill or deepen directionally, give pertinent data on subsurface locations and measured and true vertical depth. Give blowout preventer program, if any.

24.

SIGNED

B.D.H. up

TITLE Supt.

DATE 4-11-73

(This space for Federal or State office use)

PERMIT NO.

APPROVAL DATE

DATE

APPROVED
APR 12 1973
R. L. BEEKMAN
ACTING DISTRICT ENGINEER

THIS APPROVAL IS RESCINDED IF OPERATIONS
ARE NOT COMMENCED WITHIN 3 MONTHS.
JUL 19 1973

See Instructions On Reverse Side

RECEIVED
APR 12 1973
U. S. GEOLOGICAL SURVEY
ARTESIA, NEW MEXICO

NE MEXICO OIL CONSERVATION COMMISSION
WELL LOCATION AND ACREAGE DEDICATION PLAT

Form C-102
Supersedes C-128
Effective 1-1-65

All distances must be from the outer boundaries of the Section.

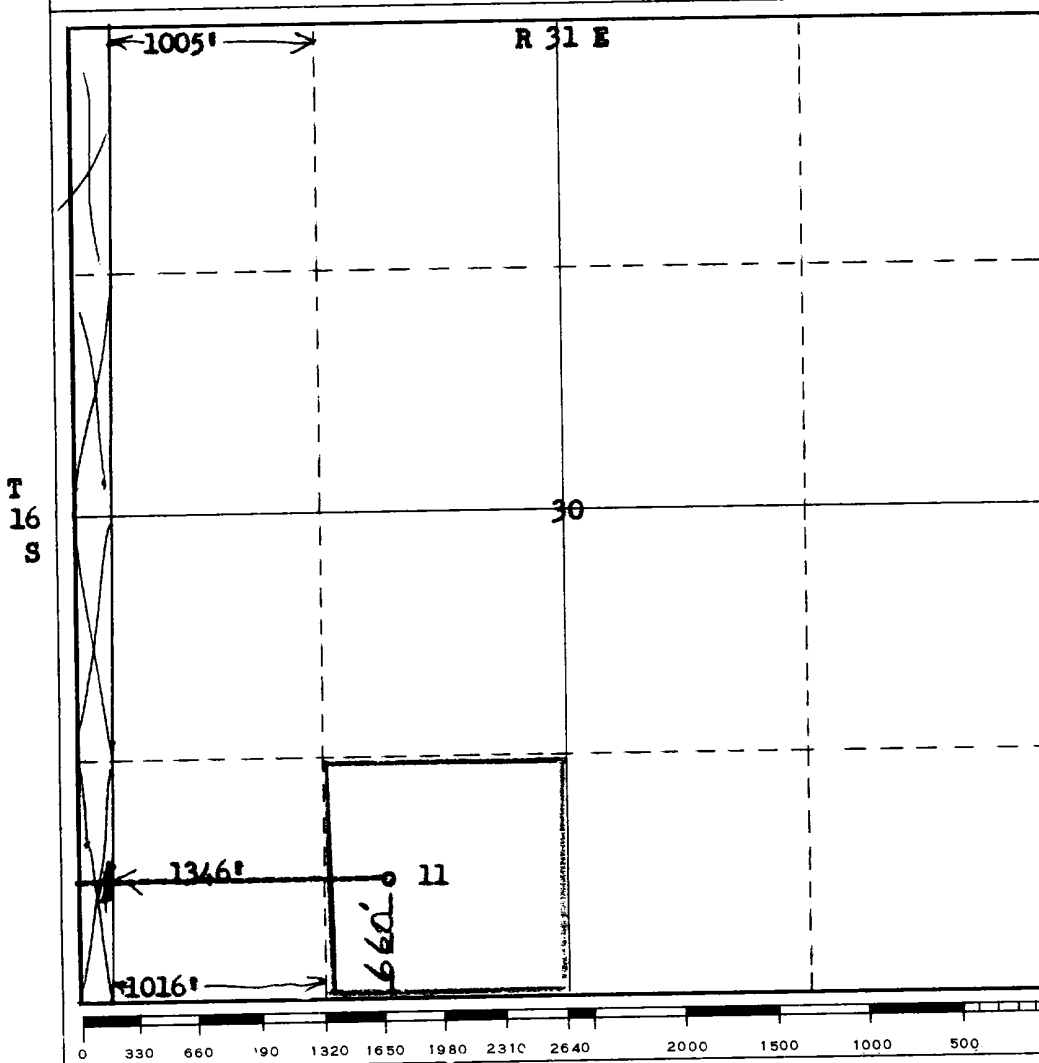
Operator ARWOOD Ltd.			Lease LOE FEDERAL		Well No. 11
Unit Letter N	Section 30	Township 16 South	Range 31 East	County Eddy	
Actual Footage Location of Well: 660 feet from the South line and 1346 feet from the West line					
Ground Level Elev. 3934	Producing Formation GL. 5 A	Pool Sq. Lake	Dedicated Acreage: 40 Acres		

- Outline the acreage dedicated to the subject well by colored pencil or hachure marks on the plat below.
- If more than one lease is dedicated to the well, outline each and identify the ownership thereof (both as to working interest and royalty).
- If more than one lease of different ownership is dedicated to the well, have the interests of all owners been consolidated by communitization, unitization, force-pooling, etc?

☐ Yes ☐ No If answer is "yes," type of consolidation _____

If answer is "no," list the owners and tract descriptions which have actually been consolidated. (Use reverse side of this form if necessary.) _____

No allowable will be assigned to the well until all interests have been consolidated (by communitization, unitization, forced-pooling, or otherwise) or until a non-standard unit, eliminating such interests, has been approved by the Commission.



CERTIFICATION

I hereby certify that the information contained herein is true and complete to the best of my knowledge and belief.

Name
B. D. H. op

Position
Supt.

Company
Arwood Ltd.

Date
4-2-73

I hereby certify that the well location shown on this plat was plotted from field notes of actual surveys made by me or, under my supervision, and that the same is true and correct to the best of my knowledge and belief.

Date Surveyed
March 21st, 1973

Registered Professional Engineer and/or Land Surveyor

James H. Brown
Certificate No. **542**

ARWOOD LTD.

PLAN OF DEVELOPMENT

Lease No. NM 07781

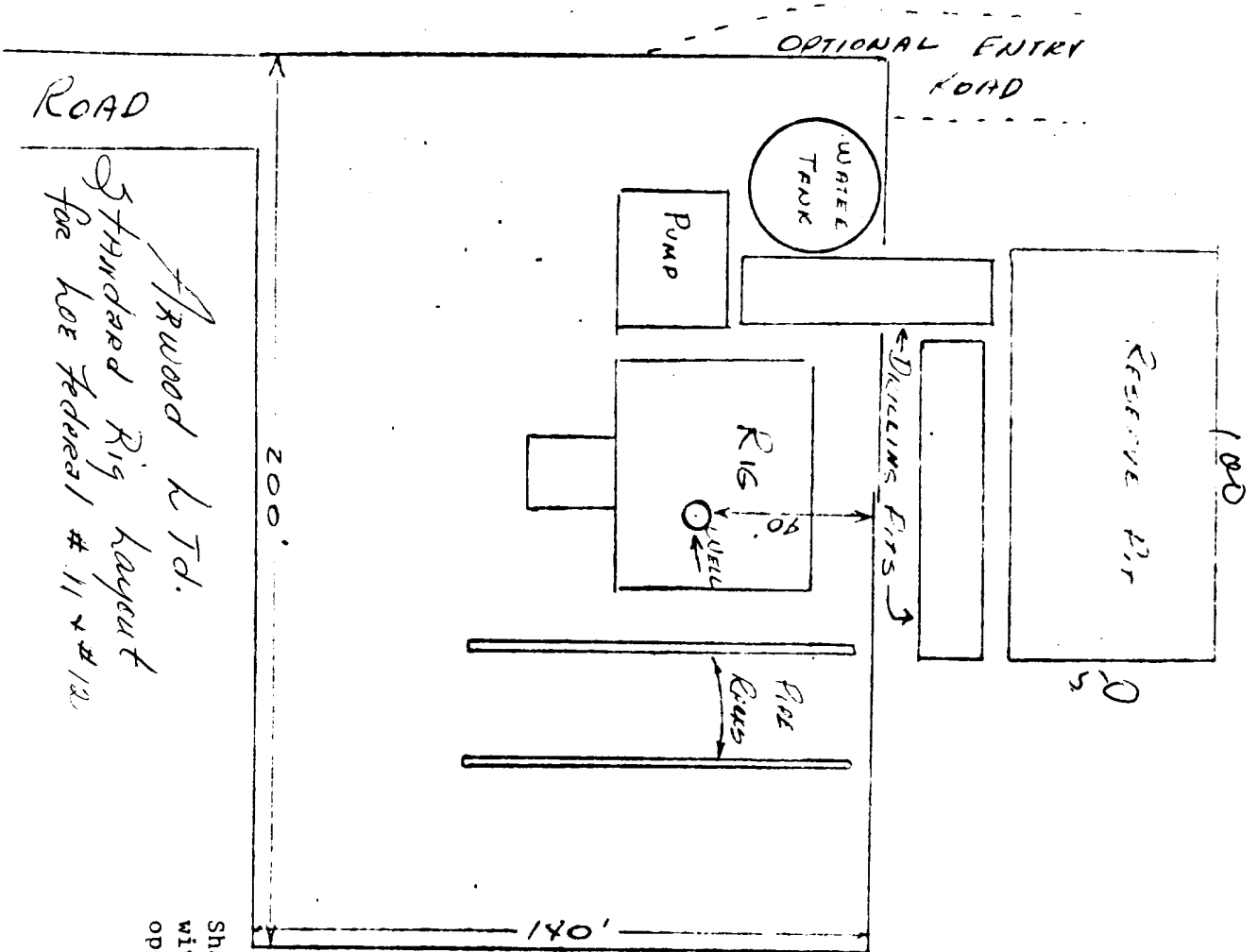
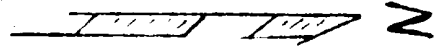
The attached plats show the required information for the development of our Loe Federal project.

There are no camps, residences or air strips of any kind in this vicinity.

Water supply will be obtained from commercial pipeline source or by truck transport from a common carrier.

After completion of the well, all pits are to be filled and leveled, and returned to as near normal condition as reasonably possible. Only the well location pad and the access road will remain as necessary for the normal prudent operation of the well. Pipelines will be installed adjacent to the access roads and will not require separate right of way.

Waste disposal will be handled by circulation and treating facilities installed at the tank battery. Waste oil emulsions will be treated at the battery and produced water, if any, will be pumped via disposal line to a nearby water treating and pumping station.



Standard Rig layout
for loc Federal # 11 & # 12

Shafter 10" Series 900 Type B B.O.P.
with 4 1/2" pipe rams and blanks. Hydraulic
operated 6,000# test, 3,000# WOP.