

UNITED STATES
DEPARTMENT OF THE INTERIOR
GEOLOGICAL SURVEY

30-015-20898

APPLICATION FOR PERMIT TO DRILL, DEEPEN, OR PLUG BACK

1a. TYPE OF WORK

DRILL ☒DEEPEN ☐PLUG BACK ☐

b. TYPE OF WELL

OIL
WELL ☐GAS
WELL ☒

OTHER

SINGLE
ZONE ☐MULTIPLE
ZONE ☐

2. NAME OF OPERATOR

McCLELLAN OIL CORPORATION

JUL 10 1973

3. ADDRESS OF OPERATOR

Box 848, ROSWELL, NEW MEXICO 88201

4. LOCATION OF WELL (Report location clearly and in accordance with any State requirements.)

At surface

ARTESIA, OFFICE

At proposed prod. zone

660 FSL & 1980 FEL

14. DISTANCE IN MILES AND DIRECTION FROM NEAREST TOWN OR POST OFFICE*

17 MILES NORTH OF LOCO HILLS

15. DISTANCE FROM PROPOSED*

LOCATION TO NEAREST
PROPERTY OR LEASE LINE, FT.
(Also to nearest drlg. unit line, if any)

660

16. NO. OF ACRES IN LEASE

240

18. DISTANCE FROM PROPOSED LOCATION*
TO NEAREST WELL, DRILLING, COMPLETED,
OR APPLIED FOR, ON THIS LEASE, FT.

2000'

19. PROPOSED DEPTH

17. NO. OF ACRES ASSIGNED
TO THIS WELL

40

20. ROTARY OR CABLE TOOLS

CABLE TOOL

21. ELEVATIONS (Show whether DF, RT, GR, etc.)

3699 G. L.

22. APPROX. DATE WORK WILL START*

JULY 1, 1973

23.

PROPOSED CASING AND CEMENTING PROGRAM

SIZE OF HOLE	SIZE OF CASING	WEIGHT PER FOOT	SETTING DEPTH	QUANTITY OF CEMENT
12 1/4"	8-5/8"	20 LB.	375	100 SX
8"	7"	18 LB.	1775	SET
6-3/4"	5 1/2"	15 LB.	2400	150 SX

WILL DRILL TO TOP OF SAN ANDRES FORMATION TO TEST YATES,
QUEEN, GRAYBURG & PREMIER SAND. IF PRODUCTION IS INDICATED,
WILL RUN CASING & ATTEMPT COMPLETION. CORTEZ DRILLING COMPANY,
ROSWELL, NEW MEXICO, WILL BE THE CONTRACTOR.

IN ABOVE SPACE DESCRIBE PROPOSED PROGRAM: If proposal is to deepen or plug back, give data on present productive zone and proposed new productive zone. If proposal is to drill or deepen directionally, give pertinent data on subsurface locations and measured and true vertical depths without preventer program, if any.

24.

SIGNED

Joe L. McClellan

TITLE PRESIDENT

DATE

6/15/73

(This space for Federal or State office use)

PERMIT NO.

APPROVAL DATE

DATE

APPROVED
JUL - 3 1973
R. L. BEEKMAN
ACTING DISTRICT ENGINEER

THIS APPROVAL IS RESCINDED IF OPERATIONS
ARE NOT COMMENCED WITHIN 3 MONTHS.
OCT - 3 1973
EXPIRES

*See Instructions On Reverse Side

RECEIVED
JUN 21 1973
U. S. GEOLOGICAL SURVEY
ARTESIA, NEW MEXICO

**N MEXICO OIL CONSERVATION COMMISSION
WELL LOCATION AND ACREAGE DEDICATION PLAT**

Form C-102
Supersedes C-128
Effective 1-1-65

All distances must be from the outer boundaries of the Section.

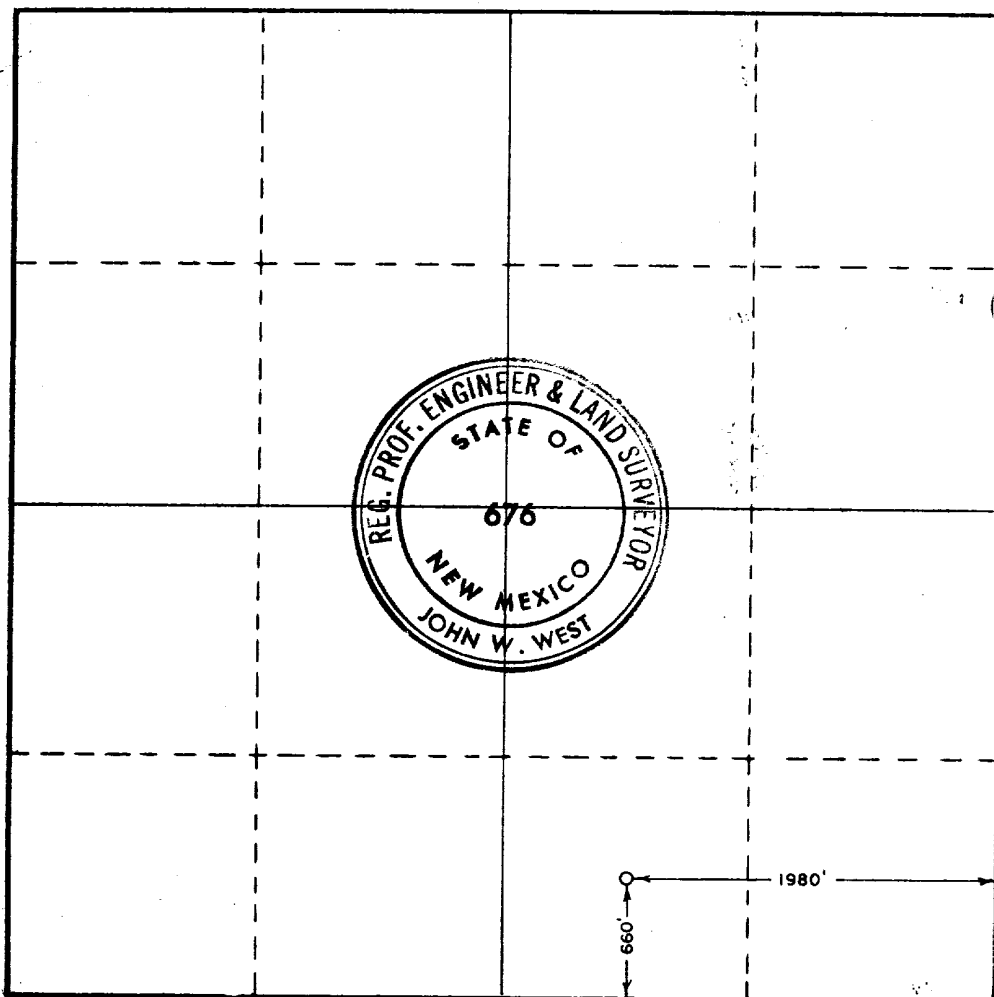
Operator McCLELLAN OIL CORP.			Lease JUNE 18 FEDERAL		Well No. 1
Unit Letter W-0	Section 4	Township 16 SOUTH	Range 29 EAST	County EDDY	
Actual Footage Location of Well:					
660 feet from the SOUTH line and		1980 feet from the EAST line			
Ground Level Elev. 3699	Producing Formation PREMIER SAND	Pool WILDCAT		Dedicated Acreage: 40 Acres	

1. Outline the acreage dedicated to the subject well by colored pencil or hachure marks on the plat below.
2. If more than one lease is dedicated to the well, outline each and identify the ownership thereof (both as to working interest and royalty).
3. If more than one lease of different ownership is dedicated to the well, have the interests of all owners been consolidated by communitization, unitization, force-pooling, etc?

☐ Yes ☐ No If answer is "yes," type of consolidation _____

If answer is "no," list the owners and tract descriptions which have actually been consolidated. (Use reverse side of this form if necessary.) _____

No allowable will be assigned to the well until all interests have been consolidated (by communitization, unitization, forced-pooling, or otherwise) or until a non-standard unit, eliminating such interests, has been approved by the Commission.



CERTIFICATION

I hereby certify that the information contained herein is true and complete to the best of my knowledge and belief.

Name
JACK L. McCLELLAN

Position
PRESIDENT

Company
McCLELLAN OIL CORP.

Date
6/15/73

RECEIVED
JUN 21 1973
U.S. GEOLOGICAL SURVEY
ARTESIA, NEW MEXICO

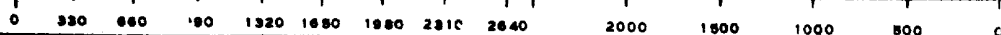
I hereby certify that the location shown on this plat is plotted from field notes of actual surveys made by me or under my supervision and that the same is true and correct to the best of my knowledge and belief.

Date Surveyed
JUNE 9, 1973

Registered Professional Engineer and/or Land Surveyor

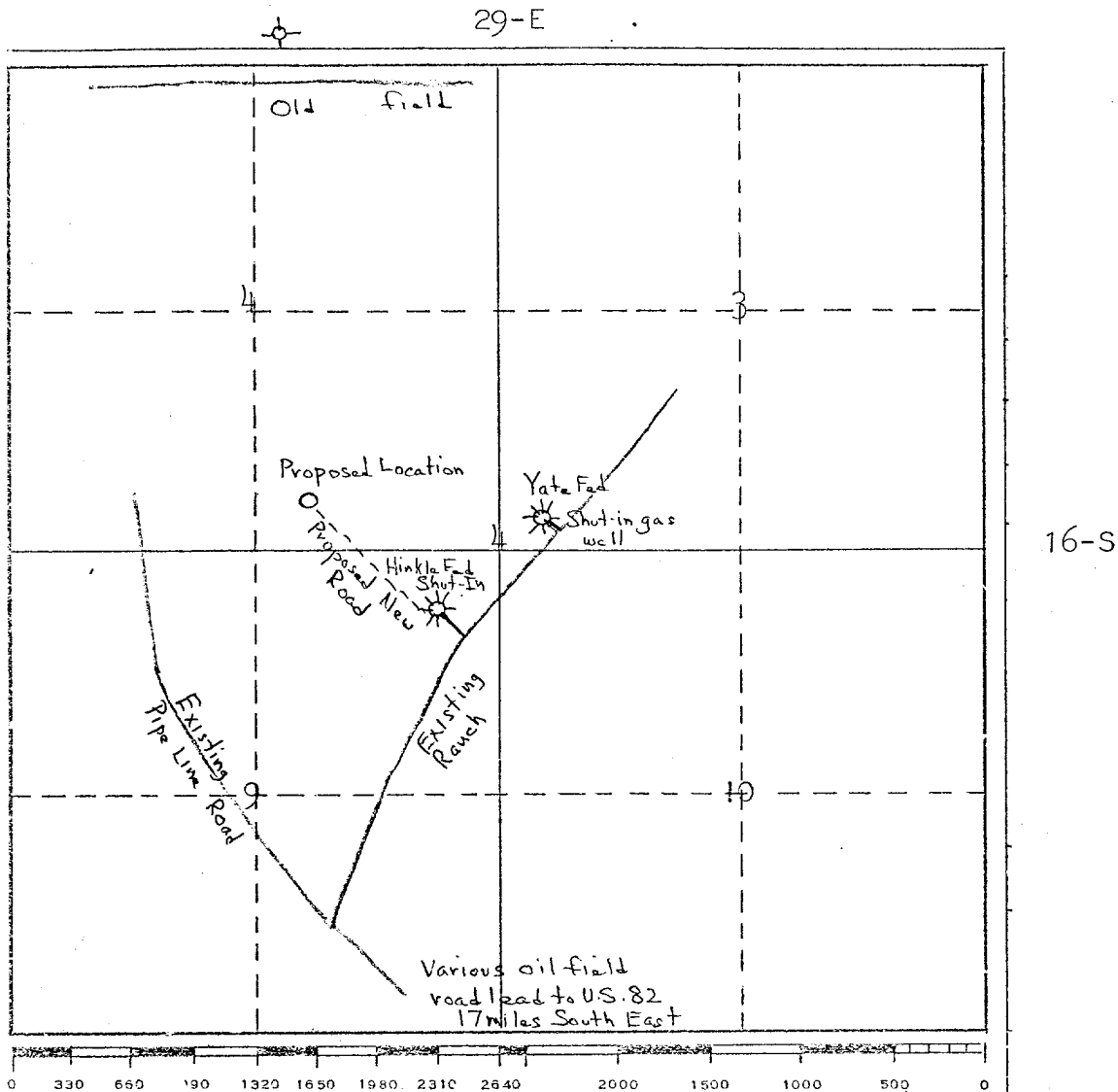
John W West

Certificate No.
676



JME

MCLELLAN OIL CORPORATION
Box 849
ROSWELL, NEW MEXICO 88201



PROPOSE TO USE RECENTLY IMPROVED EXISTING ROADS IN THIS AREA AND BUILD APPROXIMATELY 1000' OF NEW ROAD. THERE IS NO WATER ON LOCATION. DRILLING WATER WILL BE TRUCKED. NON-COMBUSTIBLE MATERIAL WILL BE BURNED. NON-COMBUSTIBLE MATERIAL WILL BE BURIED WITH PIT FILLING. AFTER COMPLETION OR ABANDONMENT, LOCATION WILL BE CLEANED, PIT FILLED AND THE GENERAL LOCATION RESTORED, AS MUCH AS POSSIBLE, TO ITS ORIGINAL CONDITION.

