

UNITED STATES  
DEPARTMENT OF THE INTERIOR  
GEOLOGICAL SURVEY

30-015-20957

## APPLICATION FOR PERMIT TO DRILL, DEEPEN, OR PLUG BACK

1a. TYPE OF WORK  
DRILL ☒ DEEPEN ☐ PLUG BACK ☐

b. TYPE OF WELL  
OIL WELL ☒ GAS WELL ☐ OTHER ☐ SINGLE ZONE ☐ MULTIPLE ZONE ☐

2. NAME OF OPERATOR  
McCLELLAN OIL CORPORATION

3. ADDRESS OF OPERATOR  
Box 848, Roswell, New Mexico 88201

4. LOCATION OF WELL (Report location clearly and in accordance with any State requirements.)  
At surface 660' FNL & 1740' FEL  
At proposed prod. zone

14. DISTANCE IN MILES AND DIRECTION FROM NEAREST TOWN OR POST OFFICE\*  
15 MILES NORTHWEST OF LOCO HILLS, NEW MEXICO

15. DISTANCE FROM PROPOSED\* LOCATION TO NEAREST PROPERTY OR LEASE LINE, FT.  
(Also to nearest drlg. unit line, if any) 660'

16. NO. OF ACRES IN LEASE 320

17. NO. OF ACRES ASSIGNED TO THIS WELL 40

18. DISTANCE FROM PROPOSED LOCATION\* TO NEAREST WELL, DRILLING, COMPLETED, OR APPLIED FOR, ON THIS LEASE, FT.

19. PROPOSED DEPTH 2200'

20. ROTARY OR CABLE TOOLS CABLE TOOLS

21. ELEVATIONS (Show whether DF, RT, GR, etc.)  
3697.7' GR

22. APPROX. DATE WORK WILL START\*  
SEPTEMBER 15, 1973

PROPOSED CASING AND CEMENTING PROGRAM				
SIZE OF HOLE	SIZE OF CASING	WEIGHT PER FOOT	SETTING DEPTH	QUANTITY OF CEMENT
10 1/2"	8-5/8"	20#	350'	100 SX
8"	4-1/2"	9 1/2#	2200'	150 SX

WILL DRILL TO APPROXIMATELY 2200' TO TEST PREMIER SAND ZONE OF THE  
GRAYBURG FORMATION.

CORTEZ DRILLING COMPANY, Box 848, ROSWELL, NEW MEXICO, WILL BE THE  
DRILLING CONTRACTOR.

RECEIVED  
SEP 17 1973  
U. S. GEOLOGICAL SURVEY  
ARTESIA, NEW MEXICO

IN ABOVE SPACE DESCRIBE PROPOSED PROGRAM: If proposal is to deepen or plug back, give data on present productive zone and proposed new productive zone. If proposal is to drill or deepen directionally, give pertinent data on subsurface locations and measured and true vertical depths. Give blowout preventer program, if any.

24. SIGNED Paul J. McClellan TITLE PRESIDENT DATE 9/14/73

(This space for Federal or State office use)

PERMIT NO. SEP 17 1973 APPROVAL DATE SEP 17 1973

APPROVED BY [Signature] TITLE DISTRICT ENGINEER DATE SEP 17 1973

CONDITIONS OF APPROVAL, IF ANY:

NEW MEXICO OIL CONSERVATION COMMISSION  
WELL LOCATION AND ACREAGE DEDICATION PLAT

Form C-102  
Supersedes C-128  
Effective 1-1-65

All distances must be from the outer boundaries of the Section.

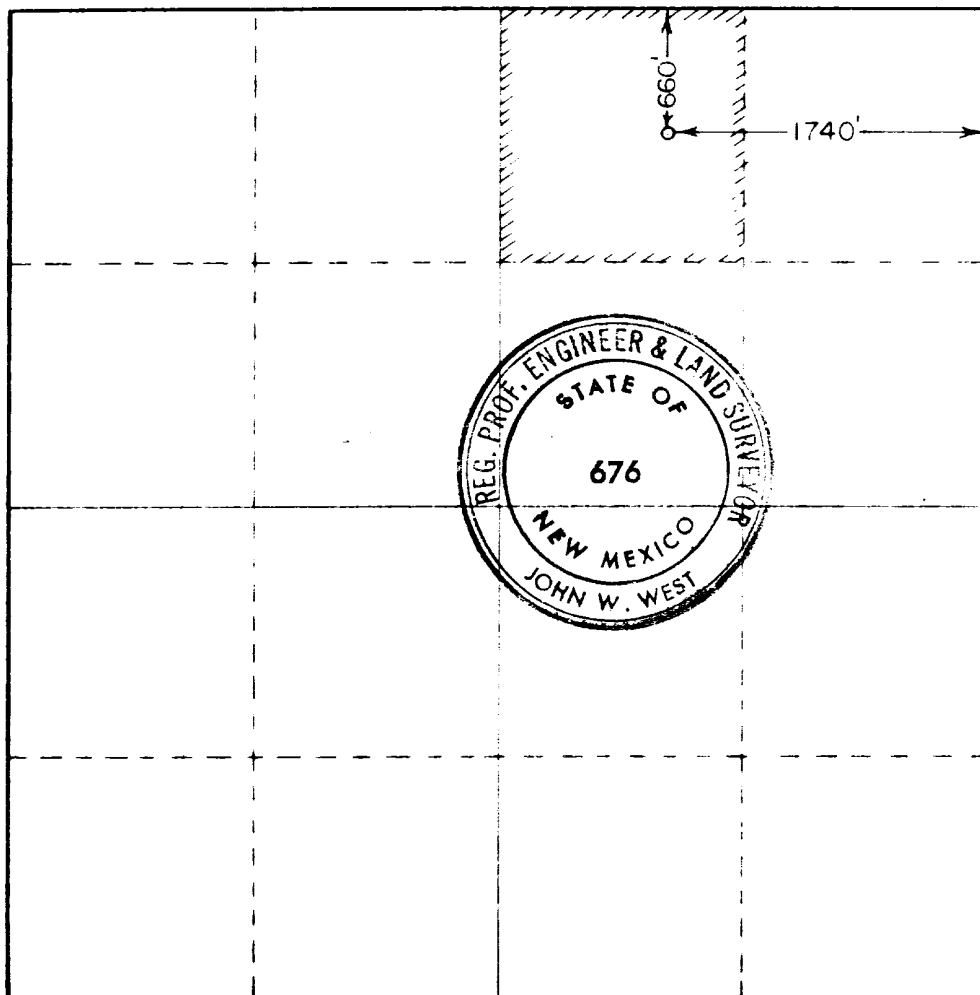
Operator <b>McCLELLAN OIL CORP.</b>			Lease <b>PAVO FEDERAL</b>		Well No. <b>1</b>
Unit Letter <b>B</b>	Section <b>23</b>	Township <b>16 SOUTH</b>	Range <b>28 EAST</b>	County <b>EDDY</b>	
Actual Footage Location of Well: <b>660</b> feet from the <b>NORTH</b> line and <b>1740</b> feet from the <b>EAST</b> line					
Ground Level Elev. <b>3697.7</b>	Producing Formation <b>PREMIER SAND</b>		Foot <i>1740</i>	Dedicated Acreage <b>40</b>	

1. Outline the acreage dedicated to the subject well by colored pencil or hachure marks on the plat below.
2. If more than one lease is dedicated to the well, outline each and identify the ownership thereof (both as to working interest and royalty).
3. If more than one lease of different ownership is dedicated to the well, have the interests of all owners been consolidated by communitization, unitization, force-pooling, etc?

☐ Yes ☐ No If answer is "yes," type of consolidation \_\_\_\_\_

If answer is "no," list the owners and tract descriptions which have actually been consolidated. (Use reverse side of this form if necessary.) \_\_\_\_\_

No allowable will be assigned to the well until all interests have been consolidated (by communitization, unitization, forced-pooling, or otherwise) or until a non-standard unit, eliminating such interests, has been approved by the Commission.



CERTIFICATION

I hereby certify that the information contained herein is true and complete to the best of my knowledge and belief.

*John W. West*  
AGENT

AGENT

**McCLELLAN OIL CORP.**

9-14-73

I hereby certify that the well location shown on this plat is the field note of the surveys made by me or under my supervision and that the same is true and correct to the best of my knowledge.

**RECEIVED**  
**SEP 17 1973**  
**U. S. GEOLOGICAL SURVEY**  
**ARTESIA, NEW MEXICO**

Date Surveyed

**SEPTEMBER 12, 1973**

Registered Professional Engineer and/or Land Surveyor

*John W. West*  
Certificate No. **676**

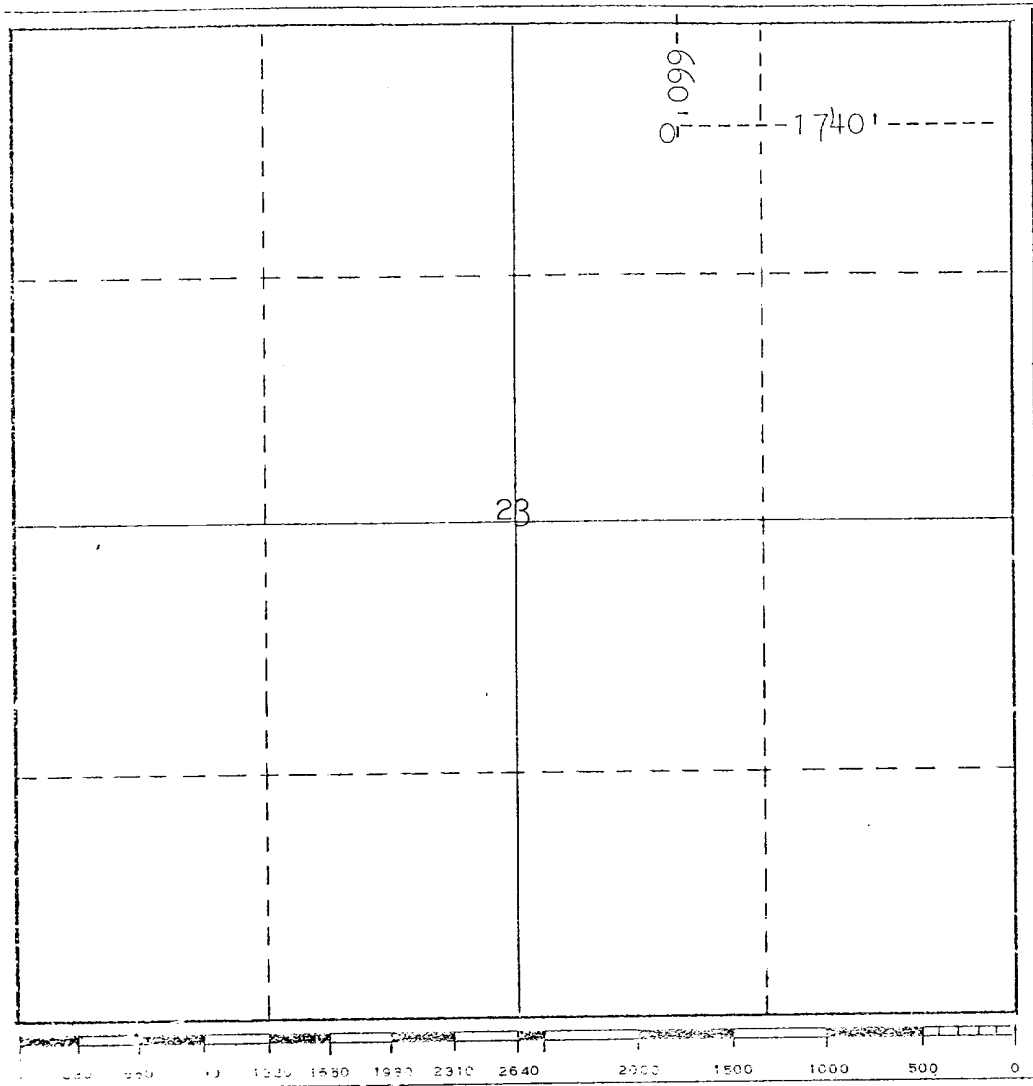
0 330 660 990 1320 1650 1980 2310 2640 2970 3300 3630 3960 4290 4620 4950 5280 5610 5940 6270 6600

JMC

MCLELLAN OIL CORPORATION  
Box 848  
ROSWELL, NEW MEXICO 88201

R-28-E

PAVO FEDERAL No. 1  
660' FNL & 1740' FEL  
SECTION 23-T16S-R28E  
EDDY COUNTY, NEW MEXICO



T-16-S

**RECEIVED**

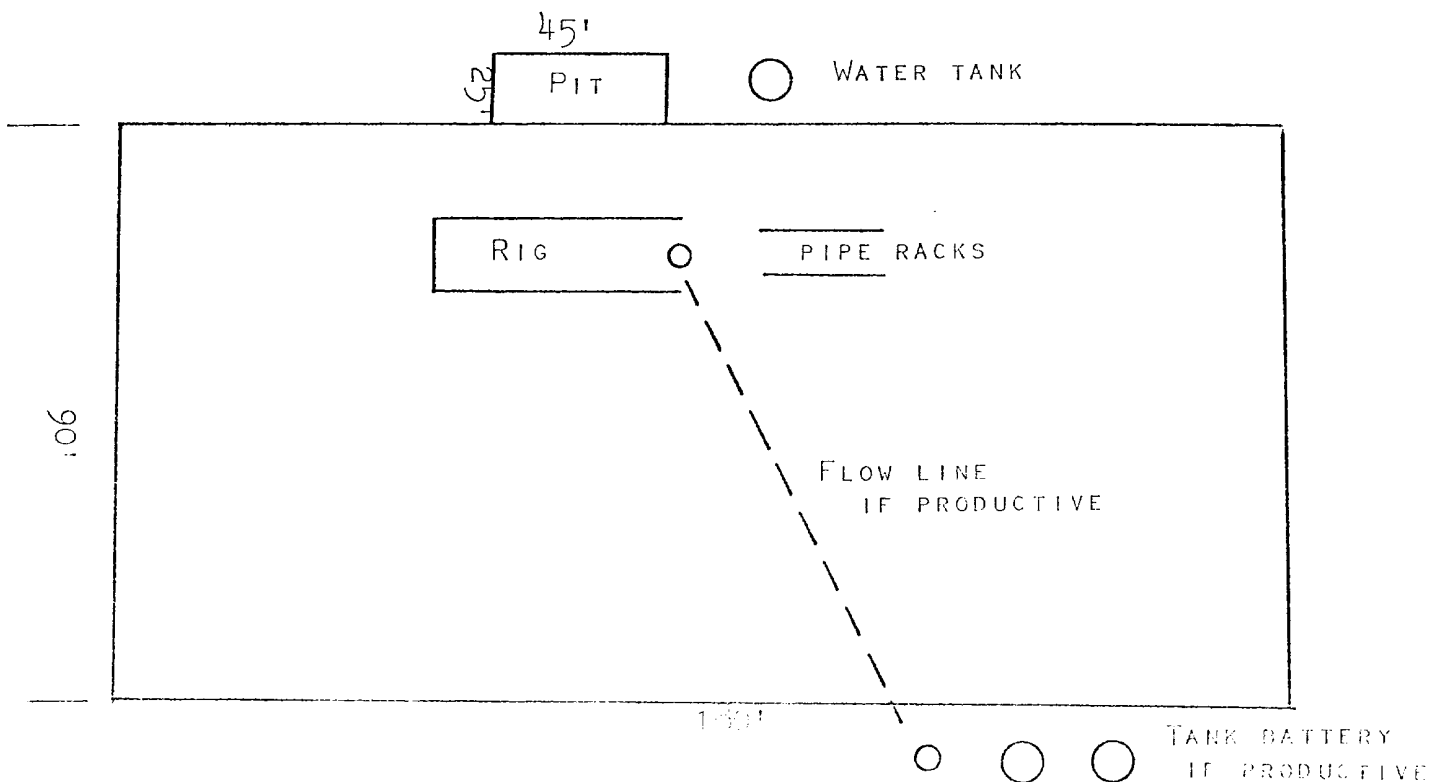
SEP 17 1973

U. S. GEOLOGICAL SURVEY  
ARTESIA, NEW MEXICO

PROPOSE TO IMPROVE EXISTING RANCH AND OIL FIELD ROADS. No NEW ROAD WILL BE CONSTRUCTED.

THERE IS NO WATER ON LOCATION AND DRILLING WATER WILL BE TRUCKED.  
COMBUSTIBLE MATERIAL WILL BE BURNED, NON-COMBUSTIBLE MATERIAL WILL BE BURIED WITH PIT FILLING.

AFTER COMPLETION OR ABANDONMENT, THE PIT WILL BE FILLED AND THE LOCATION CLEANED.

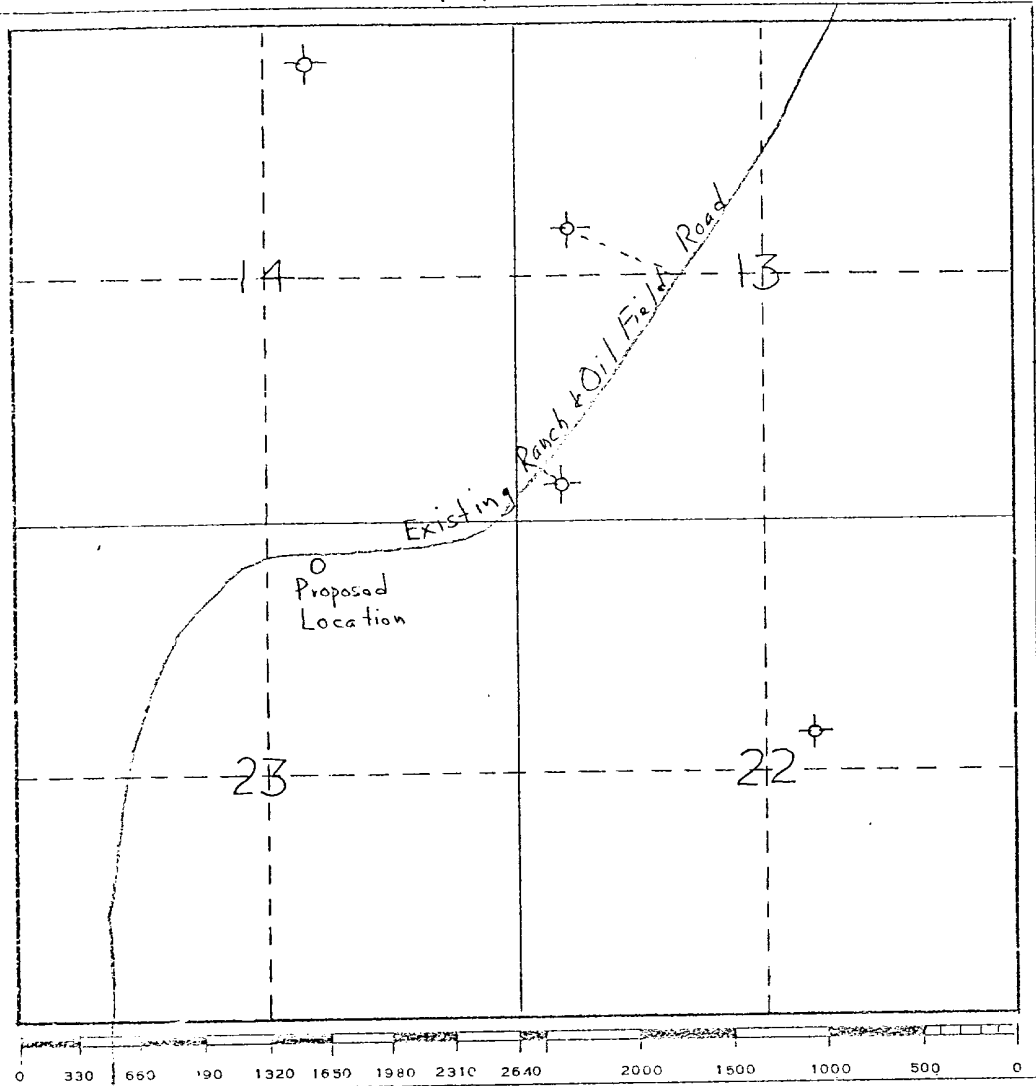


JMC

MCCLELLAN OIL CORPORATION  
Box 848  
ROSWELL, NEW MEXICO 88201

PAVO FEDERAL No. 1  
660' FNL & 1740' FEL  
SECTION 23-T16S-R28E  
EDDY COUNTY, NEW MEXICO

T-16-S



U.S. 83  
15 miles

Eddy County New Mexico

R  
28  
E

RECEIVED

SEP 17 1973  
U. S. GEOLOGICAL SURVEY  
ARTESIA, NEW MEXICO

