

UNITED STATES  
DEPARTMENT OF THE INTERIOR  
GEOLOGICAL SURVEY(Other instructions on  
reverse side)

30-015-21088

5. LEASE DESIGNATION AND SERIAL NO.

LC - 068677

6. IF INDIAN, ALLOTTEE OR TRIBE NAME

7. UNIT AGREEMENT NAME

8. FARM OR LEASE NAME

Hinkle Federal

9. WELL NO.

3

10. FIELD AND POOL, OR WILDCAT

Undesignated

11. SEC., T., R., M., OR BLK.  
AND SURVEY OR AREA

Sec. 9, T16S - R29E

12. COUNTY OR PARISH

Eddy

13. STATE

New Mexico

## APPLICATION FOR PERMIT TO DRILL, DEEPEN, OR PLUG BACK

1a. TYPE OF WORK

DRILL ☐DEEPEN ☐PLUG BACK ☐

b. TYPE OF WELL

OIL  
WELL ☒GAS  
WELL ☐

OTHER

SINGLE  
ZONE ☐MULTIPLE  
ZONE ☐

2. NAME OF OPERATOR

McClellan Oil Corporation

3. ADDRESS OF OPERATOR

P. O. Box 848, Roswell, N. M. 88201

4. LOCATION OF WELL (Report location clearly and in accordance with any State requirements.\*)

At surface

At proposed prod. zone

1980 FSL &amp; 1980 FEL

14. DISTANCE IN MILES AND DIRECTION FROM NEAREST TOWN OR POST OFFICE\*

15 miles North of Loco Hills

15. DISTANCE FROM PROPOSED\*

LOCATION TO NEAREST  
PROPERTY OR LEASE LINE, FT.  
(Also to nearest drlg. unit line, if any)

1980'

16. NO. OF ACRES IN LEASE

1780

17. NO. OF ACRES ASSIGNED  
TO THIS WELL

40

18. DISTANCE FROM PROPOSED LOCATION\*  
TO NEAREST WELL, DRILLING, COMPLETED,  
OR APPLIED FOR, ON THIS LEASE, FT.

19. PROPOSED DEPTH

2500'

20. ROTARY OR CABLE TOOLS

Cable Tools

21. ELEVATIONS (Show whether DF, RT, GR, etc.)

22. APPROX. DATE WORK WILL START\*

February 15, 1974

23.

## PROPOSED CASING AND CEMENTING PROGRAM

SIZE OF HOLE	SIZE OF CASING	WEIGHT PER FOOT	SETTING DEPTH	QUANTITY OF CEMENT
12 1/4"	8 5/8"	20 lb.	375'	100 sx.
8"	7"	18 lb.	1775'	Set
6 3/4"	5 1/2"	15 lb.	2500'	150 sx.

Will drill to top of San Andres formation to test Yates, Queen, Grayburg  
and Premium. If productive, will run casing and attempt completion.

Cortez Drilling Company of Roswell, New Mexico will be the drilling contractor.

RECEIVED

JAN 30 1974

O. C. C.

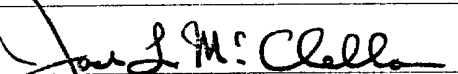
ARTESIA, OFFICE

RECEIVED  
JAN 22 1974  
U. S. GEOLOGICAL SURVEY  
ARTESIA, NEW MEXICO

IN ABOVE SPACE DESCRIBE PROPOSED PROGRAM: If proposal is to deepen or plug back, give data on present productive zone and proposed new productive zone. If proposal is to drill or deepen directionally, give pertinent data on subsurface locations and measured and true vertical depths. Give blowout preventer program, if any.

24.

SIGNED



TITLE

President

DATE

January 18, 1974

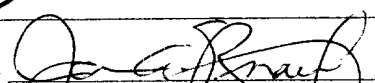
(This space for Federal or State office use)

PERMIT NO.

APPROVAL DATE

JAN 29 1974

APPROVED BY



TITLE

DISTRICT ENGINEER

DATE

CONDITIONS OF APPROVAL, IF ANY:

THIS APPROVAL IS RESCINDED IF OPERATIONS  
ARE NOT COMMENCED WITHIN 3 MONTHS.

\*See Instructions On Reverse Side

**N MEXICO OIL CONSERVATION COMMISS**  
**WELL LOCATION AND ACREAGE DEDICATION PLAT**

Form C-102  
 Supersedes C-128  
 Effective 1-1-65

All distances must be from the outer boundaries of the Section.

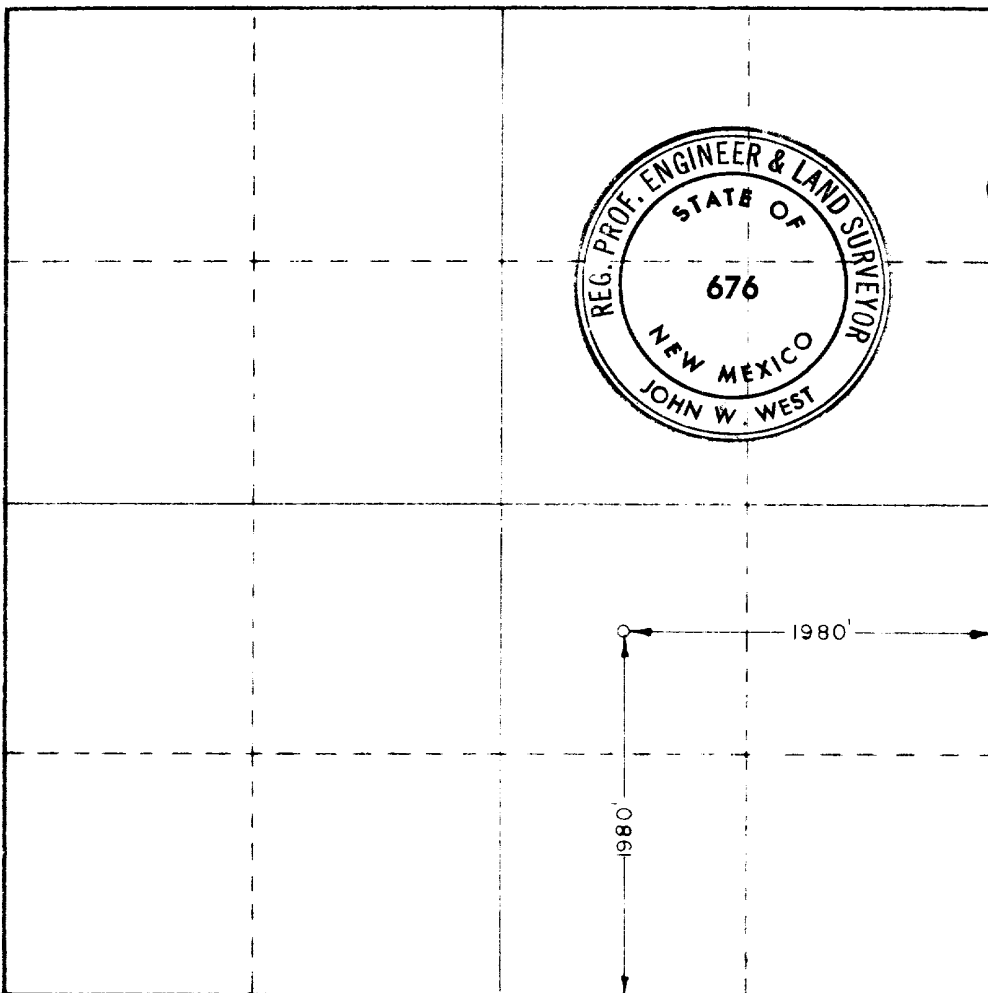
Operator <b>McCLELLAN OIL COMPANY</b>			Lease <b>HINKLE FEDERAL</b>		Well No. <b>3</b>
Unit Letter <b>J</b>	Section <b>9</b>	Township <b>16 SOUTH</b>	Range <b>29 EAST</b>	County <b>EDDY</b>	
Actual Footage Location of Well: <b>1980</b> feet from the <b>SOUTH</b> line and <b>1980</b> feet from the <b>EAST</b> line					
Ground Level Elev. <b>3687.7</b>	Producing Formation <b>PREMIER</b>	Pool <b>UNDESIGNATED</b>		Dedicated Acreage: <b>40</b> Acres	

1. Outline the acreage dedicated to the subject well by colored pencil or hatchure marks on the plat below.
2. If more than one lease is dedicated to the well, outline each and identify the ownership thereof (both as to working interest and royalty).
3. If more than one lease of different ownership is dedicated to the well, have the interests of all owners been consolidated by communitization, unitization, force-pooling, etc?

☐ Yes    ☐ No    If answer is "yes," type of consolidation \_\_\_\_\_

If answer is "no," list the owners and tract descriptions which have actually been consolidated. (Use reverse side of this form if necessary.) \_\_\_\_\_

No allowable will be assigned to the well until all interests have been consolidated (by communitization, unitization, forced-pooling, or otherwise) or until a non-standard unit, eliminating such interests, has been approved by the Commission.



**CERTIFICATION**

I hereby certify that the information contained herein is true and complete to the best of my knowledge and belief.

*Jack L. McClellan*  
 Name  
**JACK L. McCLELLAN**  
 Position  
**PRESIDENT**  
 Company  
**McCLELLAN OIL CORP.**  
 Date  
**JANUARY 21, 1974**

**RECEIVED**  
**JAN 22 1974**  
 I hereby certify that the location shown on this plat was plotted from field notes of actual survey by me or under my supervision, and that the same is true and correct to my knowledge and belief.  
**U.S. GEOLOGICAL SURVEY**  
**ARTESIA, NEW MEXICO**

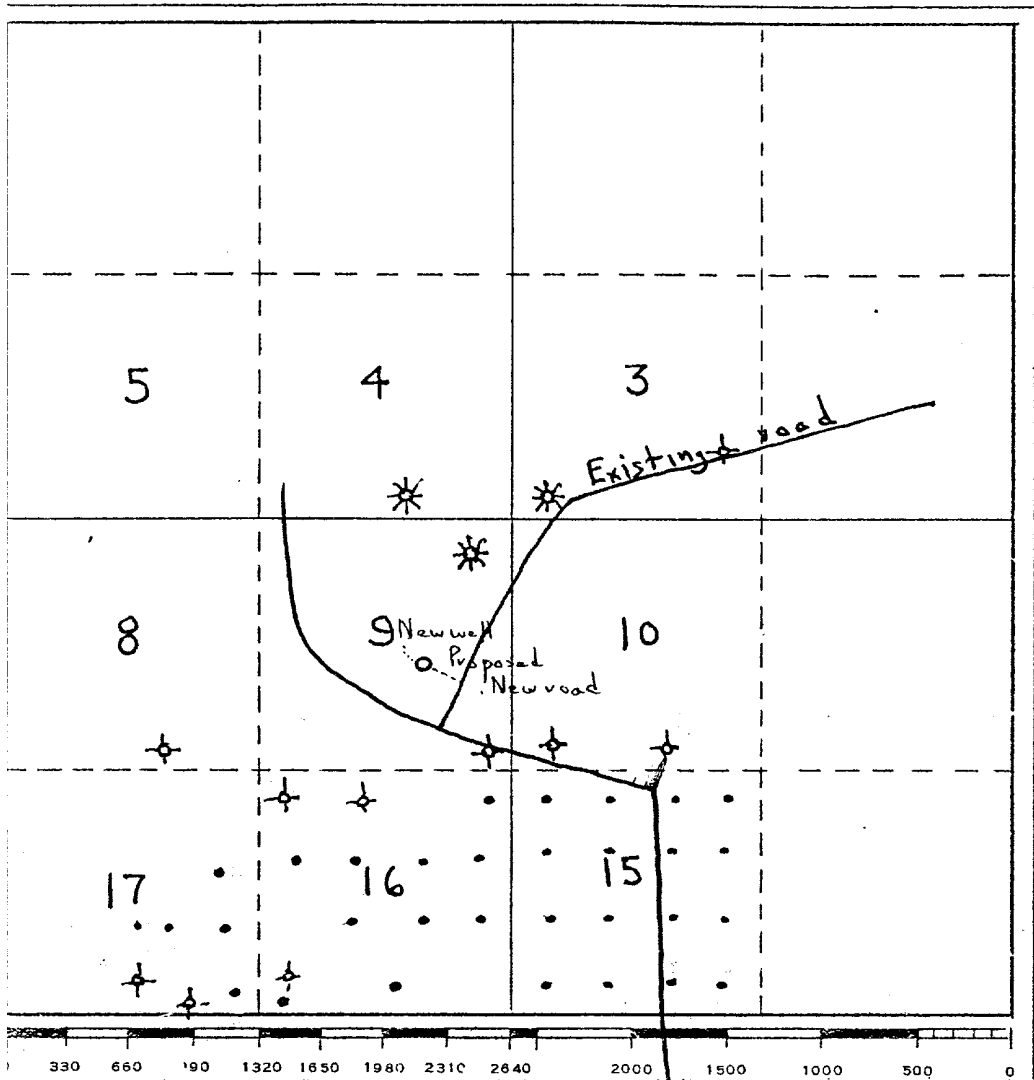
Date Surveyed  
**JANUARY 17, 1974**  
 Registered Professional Engineer and/or Land Surveyor

*John W. West*  
 Certificate No. **676**



MCCLELLAN OIL CORPORATION  
Box 848  
ROSWELL, NEW MEXICO 88201

R-29-E.



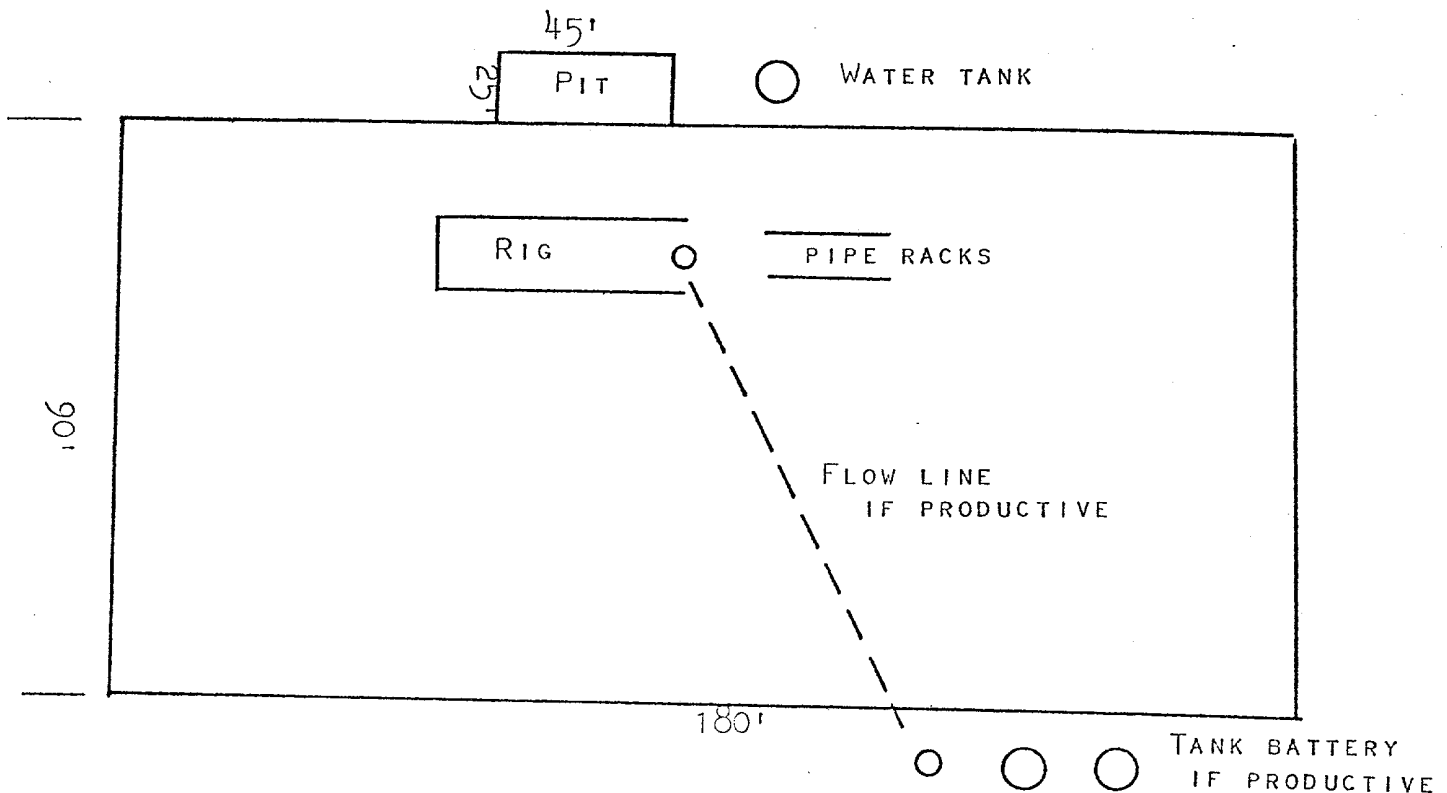
16-S

RECEIVED  
JAN 22 1974  
U. S. GEOLOGICAL SURVEY  
ARTESIA, NEW MEXICO

8 1/2 miles to New Mexico 82

PROPOSE TO USE EXISTING ROADS, OILFIELD AND RANCH, AND TO CONSTRUCT APPROXIMATELY 100' OF NEW ROAD TO LOCATION. NO WATER EXISTS IN THIS AREA AND WILL HAVE TO BE TRUCKED IN TO LOCATION. COMBUSTIBLE MATERIAL WILL BE BURNED, NONCOMBUSTIBLE MATERIAL WILL BE BURIED WITH PIT FILLING.

AFTER COMPLETION OR ABANDONMENT, THE PIT WILL BE FILLED, THE LOCATION CLEANED, AND THE AREA RESTORED, AS MUCH AS POSSIBLE, TO ITS ORIGINAL STATE.



03-000000

