

NO. OF COPIES RECEIVED	6
DISTRIBUTION	
SANTA FE	1
FILE	1
U.S.G.S.	2
LAND OFFICE	1
OPERATOR	1

NEW MEXICO OIL CONSERVATION COMMISSION
RECEIVED

MAR 28 1974

Form C-101
Revised 1-1-65

5A. Indicate Type of Lease
STATE ☒ FEE ☐
5. State Oil & Gas Lease No.
B-4575

APPLICATION FOR PERMIT TO DRILL, DEEPEN, OR PLUG BACK

1a. Type of Work DRILL <input type="checkbox"/> DEEPEN <input type="checkbox"/> PLUG BACK <input type="checkbox"/>		7. Unit Agreement Name	
b. Type of Well OIL WELL <input checked="" type="checkbox"/> GAS WELL <input type="checkbox"/> OTHER <input type="checkbox"/>		8. Farm or Lease Name State	
2. Name of Operator John R. Gray		9. Well No. 2	
3. Address of Operator P. O. Box 1046, Artesia, New Mexico 88210		10. Field and Pool, or Wildcat E. Empire-Yates SR	
4. Location of Well UNIT LETTER P LOCATED 990 FEET FROM THE South LINE AND 330 FEET FROM THE East LINE OF SEC. 28 TWP. 17S RGE. 28E NMPM		12. County Eddy	
19. Proposed Depth 950'		19A. Formation 7 Rivers	
20. Rotary or C.T. C.T.		21. Elevations (Show whether DF, RT, etc.) 3680 G. L.	
21A. Kind & Status Plug. Bond Statewide		21B. Drilling Contractor B & J Drilling Co.	
22. Approx. Date Work will start April 1, 1974			

PROPOSED CASING AND CEMENT PROGRAM

SIZE OF HOLE	SIZE OF CASING	WEIGHT PER FOOT	SETTING DEPTH	SACKS OF CEMENT	EST. TOP
8 5/8"	7"	20 lbs.	450'		
6 3/4"	5 1/2"	15 1/2 lbs.	950"		

We propose to drill to approximately 450', set 7" casing, shut water off then drill on to approximately 950', set 5 1/2" casing, pull 7" casing and circulate cement on 5 1/2". We do not anticipate gas at the depth to which we propose to drill and will not set up a blowout preventer program at this time.

**APPROVAL VALID
FOR 90 DAYS UNLESS
DRILLING COMMENCED,**

EXPIRES **6-24-74**

IN ABOVE SPACE DESCRIBE PROPOSED PROGRAM; IF PROPOSAL IS TO DEEPEN OR PLUG BACK, GIVE DATA ON PRESENT PRODUCTIVE ZONE AND PROPOSED NEW PRODUCTIVE ZONE. GIVE BLOWOUT PREVENTER PROGRAM, IF ANY.

I hereby certify that the information above is true and complete to the best of my knowledge and belief.

Signed *Alvin Goodson* Title Agent Date 3-26-74

(This space for State Use)

APPROVED BY *W. A. Gossett* TITLE OIL AND GAS INSPECTOR DATE MAR 29 1974

CONDITIONS OF APPROVAL, IF ANY:

Cement must be circulated to
surface behind 5 1/2" casing

Notify N.M.O.C.C. in sufficient
time to witness cementing
the 5 1/2" casing

NEW MEXICO OIL CONSERVATION COMMISSION
WELL LOCATION AND ACREAGE DEDICATION PLAT

Form C-102
Supersedes C-128
Effective 1-1-65

All distances must be from the outer boundaries of the Section.

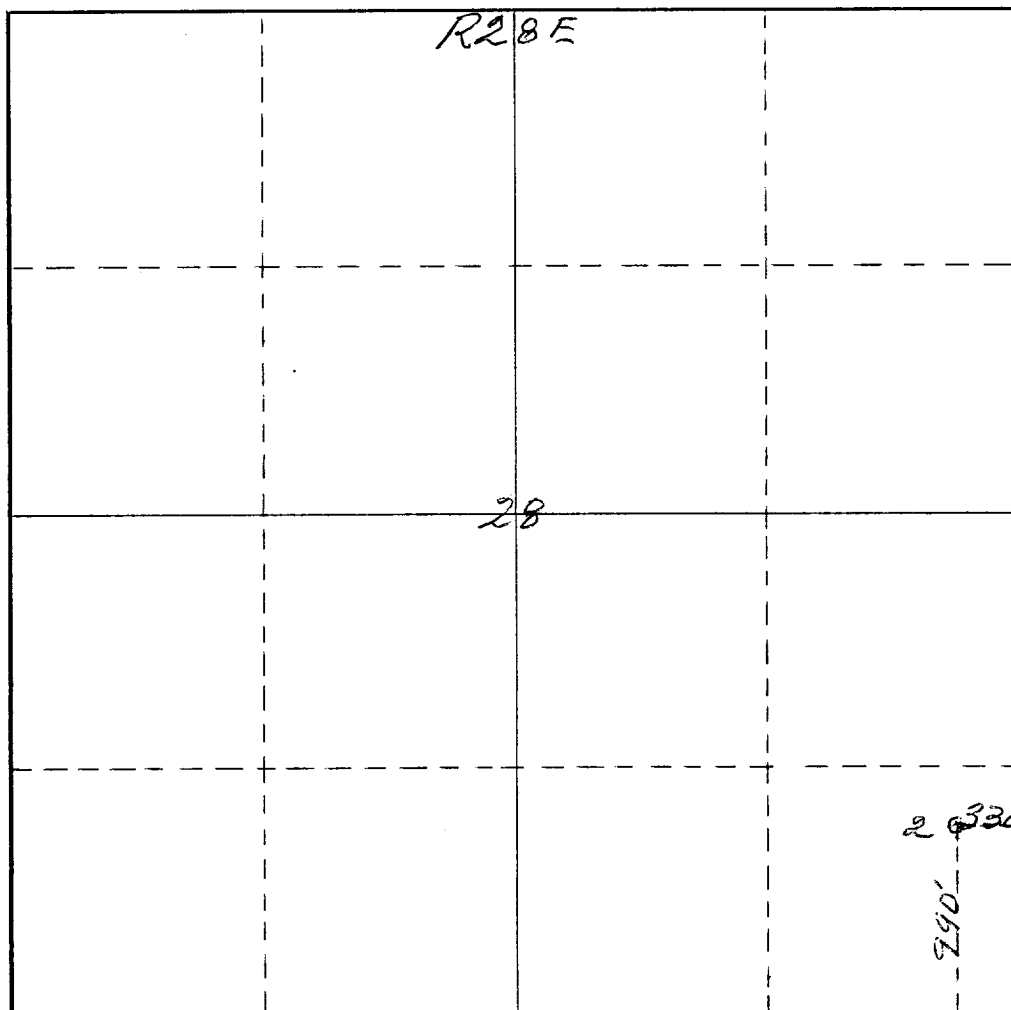
Operator <i>John R Gray</i>		Lease <i>State</i>		Well No. <i>2</i>	
Unit Letter <i>P</i>	Section <i>28</i>	Township <i>17 South</i>	Range <i>28 E</i>	County <i>Eddy</i>	
Actual Footage Location of Well: <i>990</i> feet from the <i>South</i> line and <i>330</i> feet from the <i>East</i> line					
Ground Level Elev: <i>3680</i>	Producing Formation <i>San Juan</i>	Pool <i>U. L. East Empire Joint R</i>	Dedicated Acreage: <i>40</i> Acres		

1. Outline the acreage dedicated to the subject well by colored pencil or hachure marks on the plat below.
2. If more than one lease is dedicated to the well, outline each and identify the ownership thereof (both as to working interest and royalty).
3. If more than one lease of different ownership is dedicated to the well, have the interests of all owners been consolidated by communitization, unitization, force-pooling, etc?

☐ Yes ☐ No If answer is "yes," type of consolidation _____

If answer is "no," list the owners and tract descriptions which have actually been consolidated. (Use reverse side of this form if necessary.) _____

No allowable will be assigned to the well until all interests have been consolidated (by communitization, unitization, forced-pooling, or otherwise) or until a non-standard unit, eliminating such interests, has been approved by the Commission.

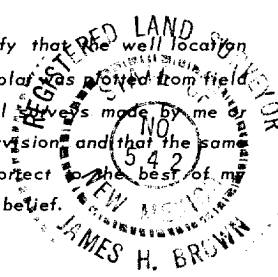


CERTIFICATION

I hereby certify that the information contained herein is true and complete to the best of my knowledge and belief.

Name *Alvin Goodson*
Position *Agent*
Company *John R. Gray*
Date *March 26, 1974*

I hereby certify that the well location shown on this plat was plotted from field notes of actual surveys made by me or under my supervision and that the same is true and correct to the best of my knowledge and belief.



Date Surveyed
December 21st 1973
Registered Professional Engineer
and/or Land Surveyor

James H. Brown
Certificate No. *542*

