

UNITED STATES
DEPARTMENT OF THE INTERIOR
GEOLOGICAL SURVEY

APPLICATION FOR PERMIT TO DRILL, DEEPEN, OR PLUG BACK

1a. TYPE OF WORK

DRILL ☒DEEPEN ☐PLUG BACK ☐

b. TYPE OF WELL

OIL
WELL ☒GAS
WELL ☐OTHER ☐SINGLE
ZONE ☐MULTIPLE
ZONE ☐

2. NAME OF OPERATOR

JACK J. GRYNBERG ✓

3. ADDRESS OF OPERATOR

1050 - 17th Street, Suite 1950, Denver, CO 80202

4. LOCATION OF WELL (Report location clearly and in accordance with any State requirements.)

At surface 1650 FWL 2310 FSL (NE SW)

At proposed prod. zone Sec. 28 T 17 S - R 25 E
(As Above)

APP 3 - 1974

14. DISTANCE IN MILES AND DIRECTION FROM NEAREST TOWN OR POST OFFICE*

Approx. 5 miles southwest of Artesia, New Mexico O. C. C.

15. DISTANCE FROM PROPOSED*

LOCATION TO NEAREST
PROPERTY OR LEASE LINE, FT.
(Also to nearest drlg. unit line, if any)

330'

16. NO. OF ACRES IN LEASE

240

17. NO. OF ACRES ASSIGNED
TO THIS WELL

40

18. DISTANCE FROM PROPOSED LOCATION*

TO NEAREST WELL, DRILLING, COMPLETED,
OR APPLIED FOR, ON THIS LEASE, FT.

None

19. PROPOSED DEPTH

1500'

20. ROTARY OR CABLE-TOOLS

Rotary

21. ELEVATIONS (Show whether DF, RT, GR, etc.)

3566 GR

22. APPROX. DATE WORK WILL START*

April 1, 1974

23.

PROPOSED CASING AND CEMENTING PROGRAM

SIZE OF HOLE	SIZE OF CASING	WEIGHT PER FOOT	SETTING DEPTH	QUANTITY OF CEMENT
13 3/4	10 3/4	32#	150'±	Circulated
9 7/8	7	20#	1125'±	Circulated
6 1/4	4 1/2	9.5# & 10.5#	1500'±	Circulated

Proposed program is to drill 13 3/4" hole to 150'± and run 10 3/4" casing to cover gravel and fine sands. Hole size will then be reduced to 9 7/8", and 7" casing will be set 100' below the artesian water zone. Hole size will be reduced to 6 1/4" to an estimated total depth of 1500' in the San Andres formation. All substantial shows will be properly evaluated, and E-logs will be run. If commercial production is indicated, a long string of 4 1/2" casing will be run, and a completion will be attempted.

Rotary tools will be equipped with adequate blowout preventers. This equipment will be pretested prior to drilling, and tested daily with results recorded.

IN ABOVE SPACE DESCRIBE PROPOSED PROGRAM: If proposal is to deepen or plug back, give data on present productive zone and proposed productive zone. If proposal is to drill or deepen directionally, give pertinent data on subsurface locations and measured and true depths. If blowout preventer program, if any.

24.

SIGNED

Cecil D. Gritz

TITLE

Petroleum Engineer

DATE

March 28, 1974

(This space for Federal or State office use)

PERMIT NO.

APPROVAL DATE

DECLARED WATER BASIN

APPROVED BY

TITLE

CONDITIONS OF APPROVAL, IF ANY:

CEMENT BEHIND THE
CASING MUST BE CIRCULATED

THIS APPROVAL IS VALID FOR OPERATIONS
ARE NOT COMMENCED WITHIN 3 MONTHS.

JUL 1 - 1974

See Instructions On Reverse Side

NOTICE

DATE TO

CASING.

RECEIVED

APR 1 1974

U. S. GEOLOGICAL SURVEY
ARTESIA, NEW MEXICO

NEW MEXICO OIL CONSERVATION COMMISSION
WELL LOCATION AND ACREAGE DEDICATION PLAT

Form C-102
Supersedes C-128
Effective 1-1-65

All distances must be from the outer boundaries of the Section.

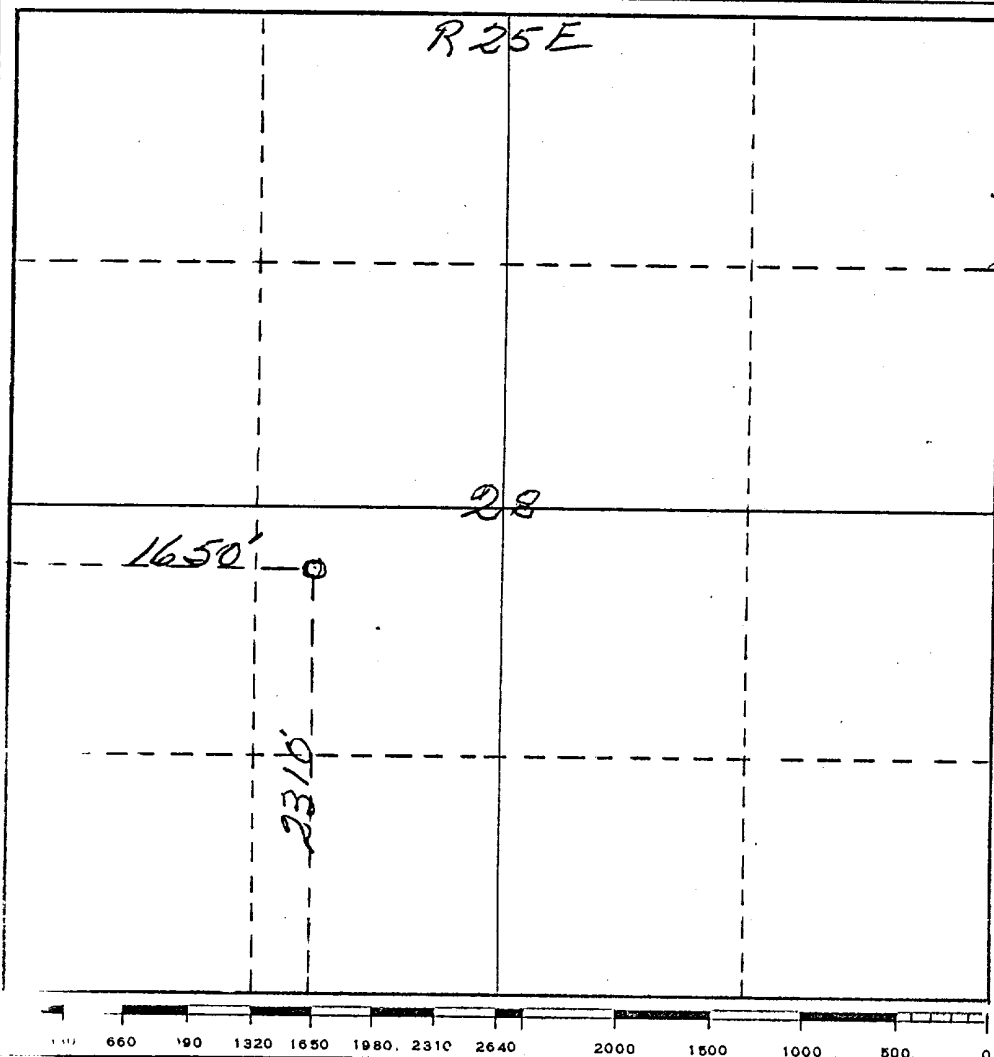
Owner <i>Jack J Grynberg</i>		Lease <i>Federal GR</i>		Well No. <i>1</i>	
Section <i>K</i>	Section <i>28</i>	Township <i>17 South</i>	Range <i>25 East</i>	County <i>Eddy</i>	
Location of Well: <i>3310</i> feet from the <i>South</i> line and <i>1650'</i> feet from the <i>West</i> line					
Spot Elev. <i>3570</i>	Producing Formation <i>San Andres</i>	Pool <i>Wind Eagle Creek San Andres</i>		Dedicated Acreage: <i>40</i> Acres	

1. Outline the acreage dedicated to the subject well by colored pencil or hachure marks on the plat below.
2. If more than one lease is dedicated to the well, outline each and identify the ownership thereof (both as to working interest and royalty).
3. If more than one lease of different ownership is dedicated to the well, have the interests of all owners been consolidated by communitization, unitization, force-pooling, etc?

☐ Yes ☐ No If answer is "yes," type of consolidation _____

If answer is "no," list the owners and tract descriptions which have actually been consolidated. (Use reverse side of this form if necessary.) _____

No allowable will be assigned to the well until all interests have been consolidated (by communitization, unitization, forced-pooling, or otherwise) or until a non-standard unit, eliminating such interests, has been approved by the Commission.



CERTIFICATION

I hereby certify that the information contained herein is true and complete to the best of my knowledge and belief.

Jack J. Grynberg
Name

Position

Company

Jack J. Grynberg

Date

4-1-74

I hereby certify that the well location shown on this plat was plotted from field notes, or actual surveys made by me or under my supervision, and that the same is true and correct to the best of my knowledge and belief.

Date Surveyed

March 30th 1974

Registered Professional Engineer
and/or Land Surveyor

James H. Brown
Certificate No. *542*

LESSEE'S DEVELOPMENT PLAN FOR SURFACE USE

(For U. S. Geological Survey)

ITEM 1: EXISTING ROADS AND LOCATION OF MAIN HIGHWAY EXIT

A main highway exit is located approximately 3½ miles west of Artesia, New Mexico on Highway 83. From this point a lateral secondary road leads south and west to Section 28 (See Exhibit 1).

ITEM 2: PLANNED ACCESS ROADS

We plan to grade and maintain an existing access road which leads south from the lateral road. An extension of this access road to the location will be constructed and maintained. This road is intended to support only the necessary vehicular traffic needed to conduct drilling operations. (See Exhibit 1)

ITEM 3: LOCATION OF WELL

~~1980' FWL 1980' FSL~~
NE/SW Sec. 28, T 17 S - R 25 E, Eddy County, New Mexico
(See attached plat and Exhibit 1)

23105-1650W

ITEM 4: LATERAL ROADS TO WELL LOCATION

A lateral secondary road leads south and west to Section 28 (See Exhibit 1)

ITEM 5: LOCATION OF TANK BATTERIES AND FLOW LINES

Tank battery will be constructed on the drilling location as approved by all parties before installation. Flow lines, if any, will follow right-of-way approved by Bureau of Land Management at a later date.

ITEM 6: LOCATION AND TYPE OF WATER SUPPLY

To be determined. This information will follow.

ITEM 7: WASTE DISPOSAL

Adequate deep burn pits for ordinary combustible trash, including protected and enclosed sumps for oil and other toxic wastes, if any. Burning of trash to be kept at a minimum.

ITEM 8: LOCATION OF CAMPS

None planned.

ITEM 9: LOCATION OF AIRSTRIPS

RECEIVED

2008071874

U. S. GEOLOGICAL SURVEY
ARTESIA, NEW MEXICO

ITEM 10: LOCATION AND RIG LAYOUT

This information will follow when a contractor is obtained and specific rig information is available.

ITEM 11: SURFACE RESTORATION

Location will be restored to original physical contour, replanted and/or reseeded to original type vegetation to prevent erosion.

ITEM 12: MISCELLANEOUS INFORMATION PERTINENT TO ENVIRONMENTAL IMPACT

All areas of pits, sumps, and other excavations will be fenced and flagged during and after operations until such time as they can be back-filled, levelled and replanted. Vehicular traffic will be restricted only to the approved access routes and used only when necessary.

Jack J. Grynberg
Federal "GR" #3
Eagle Creek S.A.
Eddy County, N. Mexico

OPERATORS DRILLING PLAN

(For U.S. Geological Survey)

1. Surface Casing

10 3/4" 32.74# 150± H-40 new

2. Casingheads, Flanges & Spools

10" 2000 psi WP csg. head
10" 2000 psi WP csg. spool
2000 psi WP flanges, valves, and flow tees.

3. Intermediate Casing

7" 20# 1125'± K-55 used

4. Blowout Preventors

10" 900 2000 psi Double Hyd

Necessary fill, kill, and choke lines to insure complete control and safety.

5. Auxiliary Equipment

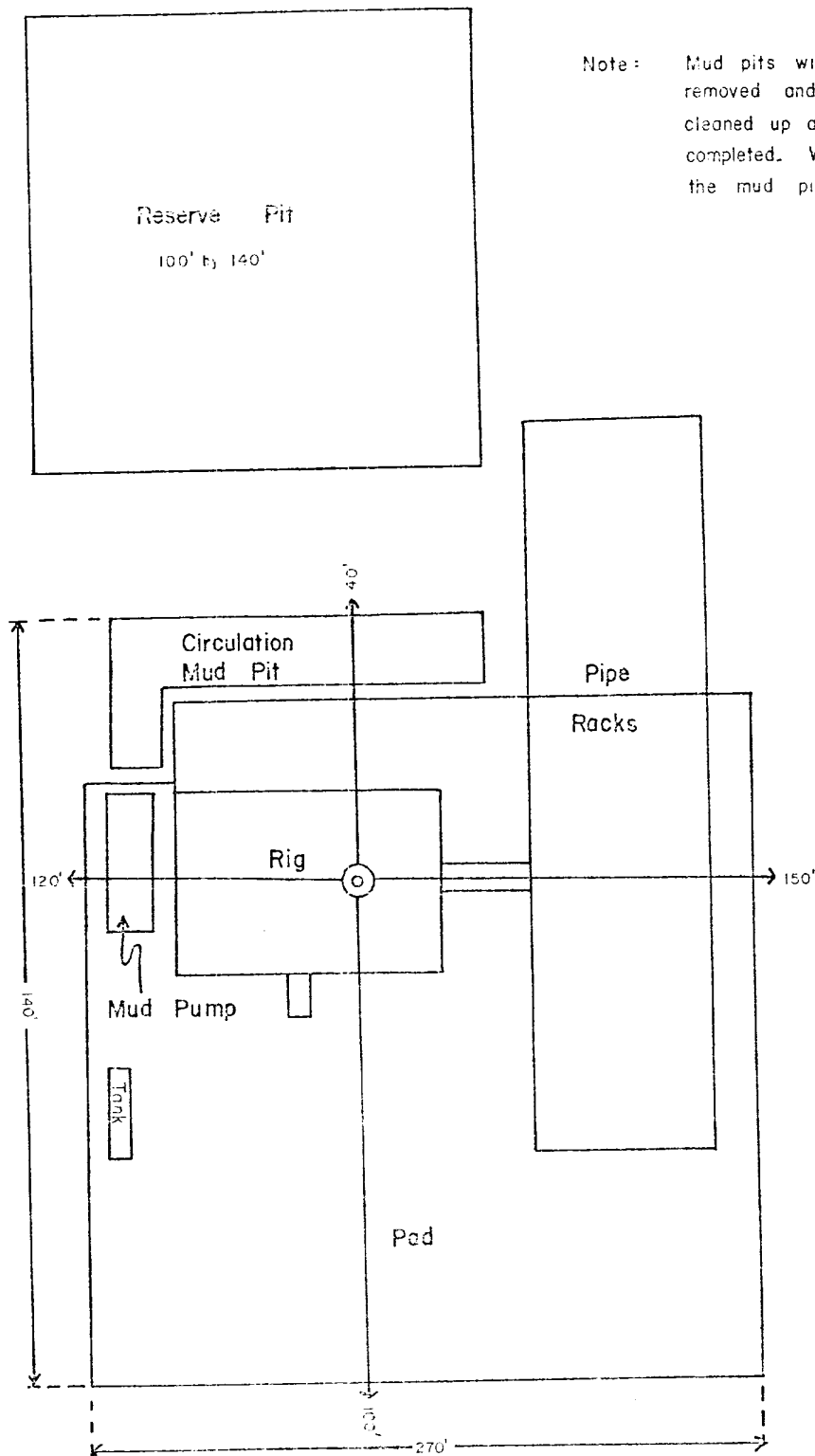
- a. Kelly Cork
- b. Stabbing Valve
- c. Additional items as needed.

6. Maximum Expected Pressures

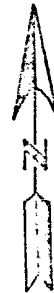
_____ 675 psi _____ at _____ TD _____
_____ at _____

7. Drilling Fluid Type

DRILLING LOCATION LAYOUT
Schematic
(Not Scaled)



Note: Mud pits will be filled. Drilling equipment removed and surface surrounding the pad cleaned up and leveled after the well is completed. Waste material to be buried in the mud pit.



RECEIVED

MAR 25 1974

U.S. GEOLOGICAL SURVEY
ARTESIA, NEW MEXICO

