

UNITED STATES
DEPARTMENT OF THE INTERIOR
GEOLOGICAL SURVEY

APPLICATION FOR PERMIT TO DRILL, DEEPEN, OR PLUG BACK

1a. TYPE OF WORK

DRILL ☒DEEPEN ☐PLUG BACK ☐

b. TYPE OF WELL

OIL
WELL ☒GAS
WELL ☐

OTHER

SINGLE
ZONE ☒MULTIPLE
ZONE ☐

2. NAME OF OPERATOR

Yates Petroleum Corporation ✓

3. ADDRESS OF OPERATOR

207 South 4th Street - Artesia, NM 88210

4. LOCATION OF WELL (Report location clearly and in accordance with any State requirements.)

At surface

990' FSL & 2310' FEL of Sec. 22-17S-25E

At proposed prod. zone

14. DISTANCE IN MILES AND DIRECTION FROM NEAREST TOWN OR POST OFFICE*

Approx 5 miles west of Artesia, NM

APR 4 1974

15. DISTANCE FROM PROPOSED*

LOCATION TO NEAREST

PROPERTY OR LEASE LINE, FT.

(Also to nearest drlg. unit line, if any)

990'

18. DISTANCE FROM PROPOSED LOCATION*

TO NEAREST WELL, DRILLING, COMPLETED,
OR APPLIED FOR, ON THIS LEASE, FT.

16. NO. OF ACRES IN LEASE

D.C.C.

ARTESIA, OFFICE

19. PROPOSED DEPTH

Approx. 1500'

17. NO. OF ACRES ASSIGNED

TO THIS WELL

40

20. ROTARY OR CABLE TOOLS

Rotary

21. ELEVATIONS (Show whether DF, RT, GR, etc.)

3528' GR

22. APPROX. DATE WORK WILL START*

As soon as approved

23.

PROPOSED CASING AND CEMENTING PROGRAM

SIZE OF HOLE	SIZE OF CASING	WEIGHT PER FOOT	SETTING DEPTH	QUANTITY OF CEMENT
14-3/4"	10-3/4"	32#	Approx. 200'	Circulate
9-7/8"	7"	20#	" 1150'	Circulate
6-1/4"	4 1/2" tapered 4 5/8"	9.5# 15.5#	" 1500'	Circulate

We propose to drill a 14 3/4" hole to approx 200' set 10-3/4" casing, if necessary, and circulate, then drill a 9-7/8" hole to 100' below the Artesian zone, set 7" surface casing and circulate, reduced hole to 6 1/4" and drill to total depth of 1500', run a tapered string of production casing, cement, perforate and Sand Frac for completion in the Slaughter formation.

Mud Program: Fresh water gel and LCM to 1150' (dry drill), wtr from casing point to TD.

BOP Program: BOP's will be installed on 7" casing and tested daily.

IN ABOVE SPACE DESCRIBE PROPOSED PROGRAM: If proposal is to deepen or plug back, give data on present productive zone. If proposal is to drill or deepen directionally, give pertinent data on subsurface locations and measured and prevented program, if any.

24.

SIGNED

Eddie M. Matlock

TITLE

Engineer

DATE

3-26-74

(This space for Federal or State office use)

PERMIT NO.

APPROVAL DATE

APPROVED
APR 8 1974APPROVED BY
COMMISSIONER OF GEOSCIENCESR. L. BECKMAN
ACTING DISTRICT ENGINEER

THIS APPROVAL IS RESCINDED
IF OPERATIONS
ARE NOT COMMENCED WITHIN 3 MONTHS.
EXPIRES JUL 3 - 1974

*See Instructions On Reverse Side

DECLARED WATER BASIN

CEMENT BEHIND THE
CASING MUST BE CIRCULATED

NOTIFY USGS IN SUFFICIENT TIME TO
WITNESS CEMENTING THE 7" CASING

NEW MEXICO OIL CONSERVATION COMMISSION
WELL LOCATION AND ACREAGE DEDICATION PLAT

Form C-102
Supersedes C-128
Effective 1-1-65

All distances must be from the outer boundaries of the Section.

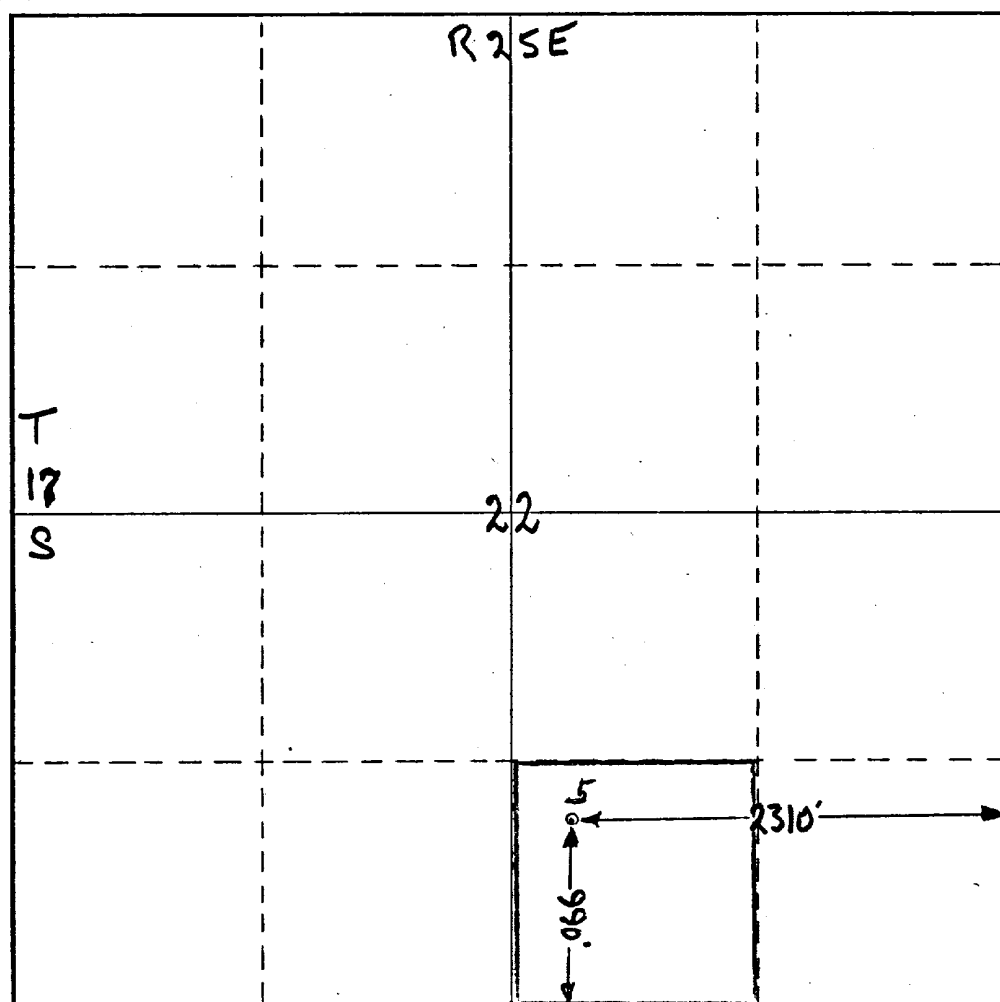
Operator Yates Petroleum Corporation			Lease Federal "BW"		Well No. 5
Unit Letter 0	Section 22	Township 17S	Range 25E	County Eddy	
Actual Footage Location of Well: 990 feet from the South line and 2310 feet from the East line					
Ground Level Elev. 3528' GR	Producing Formation San Andres		Pool Eagle Creek S.A.		Dedicated Acreage: 40 Acres

1. Outline the acreage dedicated to the subject well by colored pencil or hachure marks on the plat below.
2. If more than one lease is dedicated to the well, outline each and identify the ownership thereof (both as to working interest and royalty).
3. If more than one lease of different ownership is dedicated to the well, have the interests of all owners been consolidated by communitization, unitization, force-pooling, etc?

☐ Yes ☐ No If answer is "yes," type of consolidation _____

If answer is "no," list the owners and tract descriptions which have actually been consolidated. (Use reverse side of this form if necessary.) _____

No allowable will be assigned to the well until all interests have been consolidated (by communitization, unitization, forced-pooling, or otherwise) or until a non-standard unit, eliminating such interests, has been approved by the Commission.



CERTIFICATION

I hereby certify that the information contained herein is true and complete to the best of my knowledge and belief.

Eddie M. Mahfood

Name
Eddie M. Mahfood

Position
Engineer

Company
Yates Pet. Corporation

Date
3-25-74

RECEIVED
I hereby certify that the well location shown on this plat was located from field notes and actual surveys made by me or under my supervision and that the same is true and correct to the best of my knowledge and belief.

JAMES H. BROWN

Date Surveyed
March 25th 1974

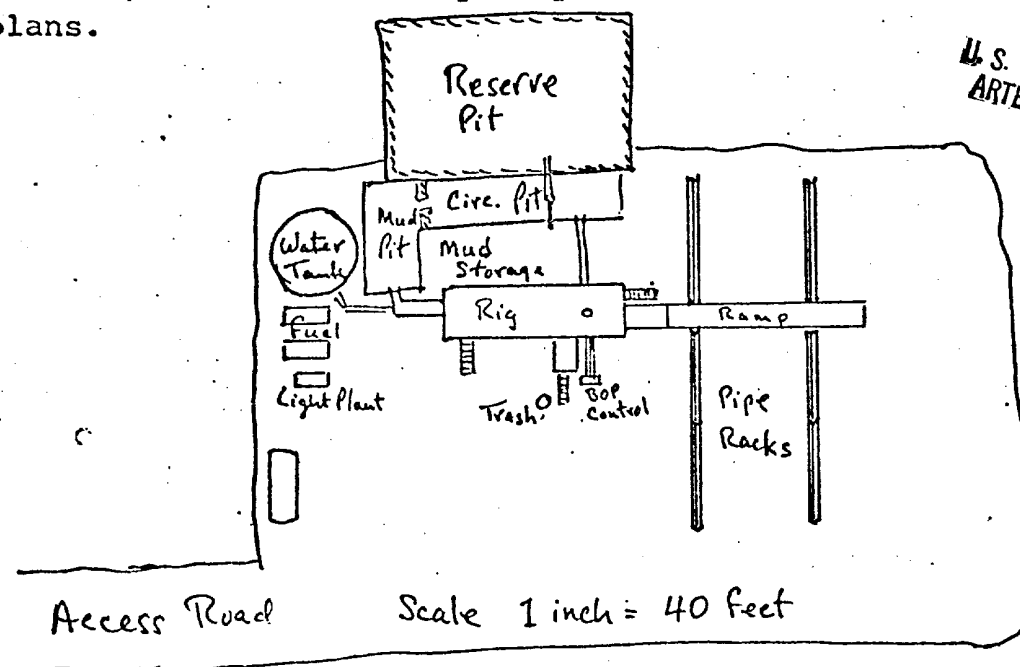
Registered Professional Engineer
and/or Land Surveyor

James H. Brown
Certificate No. **542**

Development plan for surface use to accompany, "Applications to Drill Onshore Oil, Gas, or Geothermal Steam Wells on Public Domain and acquired Federal Lands:"

1. Existing roads. See attached Topo Map. Roads are caliche and maintained by Company as needed
2. Planned access roads. See attached Topo Map. Shortest route, east from existing road.
3. Location of well. See attached Topo Map. In-fill well in Eagle Creek (SA)
4. Lateral roads to wells locations. See attached Topo Map. No new lateral roads needed or planned - will use existing roads.
5. Location of tank batteries and flowlines. See attached Topo Map. Will use existing tank battery. Flowline will be laid alongside roadways
6. Locations and types of water supply. Fresh water source well located in Unit L Section 23-17S-25E(Eagle Creek) utilized for drilling operations
7. Methods for handling waste disposal. Mud and engine oil in circulating pit, trash in waste barrel for disposal in approved (city dump)
8. Location of camps. NA
9. Location of airstrips. NA
10. Location layout to include position of the rig, mud tanks, reserve pits, burn pits, pipe racks, etc. See sketch.
11. Plans for restoration of the surface. Pits to be fenced until dired and leveled. Upon abandonment, surface to be restored to near original
12. Any other information which the Approving Official considers essential to his assessment of the impact on the environment. Rolling terrian w/prairie grass & tumbleweed, patented surface. Development plan satisfactory to rancher, JW. Gissler, Box 987, Artesia, New Mexico 88210

The affected Federal and State surface managing agencies shall have access to or, if feasible, may be provided with copies of such development plans.



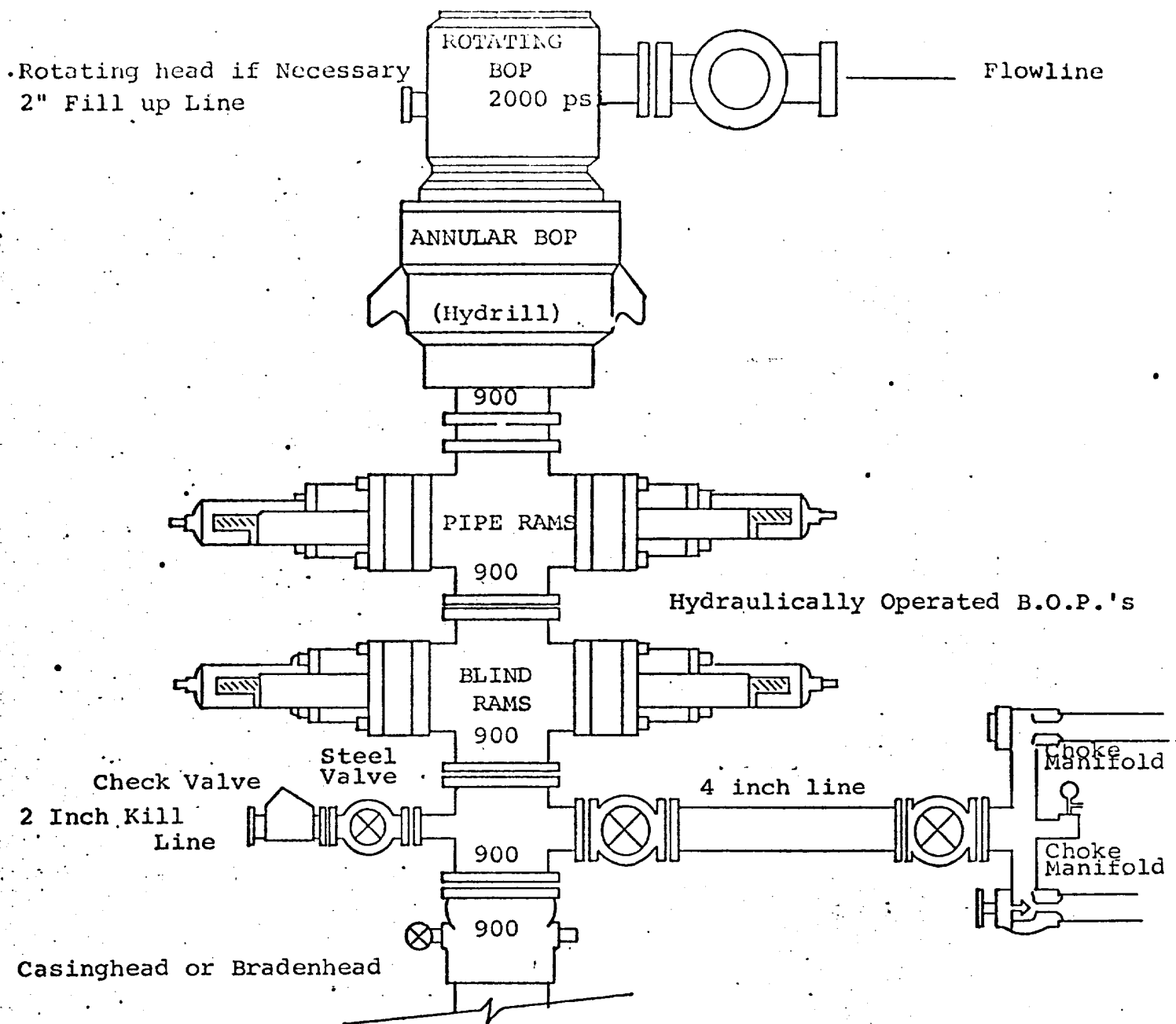
RECEIVED
MAR 20 1974
U.S. GEOLOGICAL SURVEY
ARTESIA, NEW MEXICO

SUBMITTED BY:
YATES PETROLEUM CORPORATION

APPROVED BY"
BLM, DEPT OF INTERIOR

Eddie M. Mahfood - Engineer
3-26-74

DIAGRAMMATIC SKETCH OF 3000 PSI BOP ASSEMBLY



THE FOLLOWING CONSTITUTE MINIMUM BLOWOUT PREVENTER REQUIREMENTS

1. All preventers to be hydraulically operated with secondary manual controls installed prior to drilling out from under casing.
2. Choke outlet to be a minimum of 4" diameter.
3. Kill line to be of all steel construction of 2" minimum diameter.
4. All connections from operating manifolds to preventers to be all steel hole or tube a minimum of one inch in diameter.
5. The available closing pressure shall be at least 15% in excess of that required with sufficient volume to operate the B.O.P.'s.
6. All Connections to and from preventer to have a pressure rating equivalent to that of the B.O.P.'s.
7. Inside blowout preventer to be available on rig floor.
8. Operating controls located a safe distance from the rig floor.
9. Hole must be kept filled on trips below intermediate casing. Operator not responsible for blowouts resulting from not keeping hole full.
10. Drill pipe must be installed and used below zone of first gas intrusion.
11. Anticipated Bottom Hole Pressure is less than 400 psi.
12. No Kelly Cock or manual valves necessary.
13. BOP's Tested prior to drilling casing shoe, TD reached estimated 24 hrs.

