

UNITED STATES
DEPARTMENT OF THE INTERIOR
GEOLOGICAL SURVEY

APPLICATION FOR PERMIT TO DRILL, DEEPEN, OR PLUG BACK

1a. TYPE OF WORK DRILL <input checked="" type="checkbox"/> DEEPEN <input type="checkbox"/> PLUG BACK <input type="checkbox"/>		5. LEASE DESIGNATION AND SERIAL NO. NM 0219603- 4
b. TYPE OF WELL OIL WELL <input checked="" type="checkbox"/> GAS WELL <input type="checkbox"/> OTHER <input type="checkbox"/> SINGLE ZONE <input checked="" type="checkbox"/> MULTIPLE ZONE <input type="checkbox"/>		6. IF INDIAN, ALLOTTEE OR TRIBE NAME
2. NAME OF OPERATOR Yates Petroleum Corporation		7. UNIT AGREEMENT NAME
3. ADDRESS OF OPERATOR 207 So. 4th St., Artesia, New Mexico 88210		8. FARM OR LEASE NAME Federal BZ
4. LOCATION OF WELL (Report location clearly and in accordance with any State requirements.) At surface 330' FNL and 990' FEL of Sec. 28-17S-25E At proposed prod. zone		9. WELL NO. 10
14. DISTANCE IN MILES AND DIRECTION FROM NEAREST TOWN OR POST OFFICE* Approx. 5 miles West of Artesia, N.M. 88210		10. FIELD AND POOL, OR WILDCAT Eagle Creek, S.A.
15. DISTANCE FROM PROPOSED* LOCATION TO NEAREST PROPERTY OR LEASE LINE, FT. (Also to nearest drg. unit line, if any) 330'		11. SEC., T., R., M., OR BLK. AND SURVEY OR AREA Sec. 28-17S-25E
16. NO. OF ACRES IN LEASE		12. COUNTY OR PARISH
17. NO. OF ACRES ASSIGNED TO THIS WELL		13. STATE N.M.
18. DISTANCE FROM PROPOSED LOCATION* TO NEAREST WELL, DRILLING, COMPLETED, OR APPLIED FOR, ON THIS LEASE, FT.		14. COUNTY OR PARISH Eddy
19. PROPOSED DEPTH Approx. 1500'		15. STATE N.M.
20. ROTARY OR CABLE TOOLS Rotary		21. APPROX. DATE WORK WILL START* As soon as approved
22. ELEVATIONS (Show whether DF, RT, GR, etc.) 3554 GR		
23. PROPOSED CASING AND CEMENTING PROGRAM		

SIZE OF HOLE	SIZE OF CASING	WEIGHT PER FOOT	SETTING DEPTH	QUANTITY OF CEMENT
14 3/4"	10 3/4"	32#	Approx. 200'	Circulate
9 7/8"	7"	20#	Approx. 1100'	Circulate
6 1/4"	4 1/2" tapered 5 1/2"	9.5, 15.5#	Approx. 1500'	Circulate

We propose to drill a 14 3/4" hole to approximately 200', set 10 3/4" casing, if necessary, and circulate, then drill 9 7/8" hole to 100' below Artesian Zone, set 7" surface casing and circulate, reduce hole to 6 1/4" and drill to TD of approximately 1500', run a tapered string of production casing, cement, perforate and Sand Frac for Slaughter production.

Mud Program: Fresh water gel and LCM to 1100 (or dry drill), water from casing point to TD.

BOP Program: BOP's will be installed on 7" casing and tested.

RECEIVED

IN ABOVE SPACE DESCRIBE PROPOSED PROGRAM: If proposal is to deepen or plug back, give data on present productive zone and proposed new productive zone. If proposal is to drill or deepen directionally, give pertinent data on subsurface locations and measured and true vertical depth. Give blowout preventer program, if any.

24. SIGNED Eddie L. Bickman TITLE ENGINEER DATE 3-26-74
(This space for Federal or State office use)

PERMIT NO.

APPROVAL DATE

DECLARED WATER BASIN

APPROVED
APR 3 - 1974
J. L. BICKMAN
ACTING DISTRICT ENGINEER

THIS APPROVAL IS RESCINDED IF
OPERATIONS ARE NOT COMPLETED WITHIN 3 MONTHS.
JUL 3 - 1974
See Instructions On Reverse Side

CEMENT BEHIND THE
CASING MUST BE CIRCULATED

NOTIFY USGS IN SUFFICIENT TIME TO
FINISH CEMENTING THE 7" CASING.

NEW MEXICO OIL CONSERVATION COMMISSION
WELL LOCATION AND ACREAGE DEDICATION

Form C-102
Supersedes C-128
Effective 1-1-65

All distances must be from the outer boundaries of the Section.

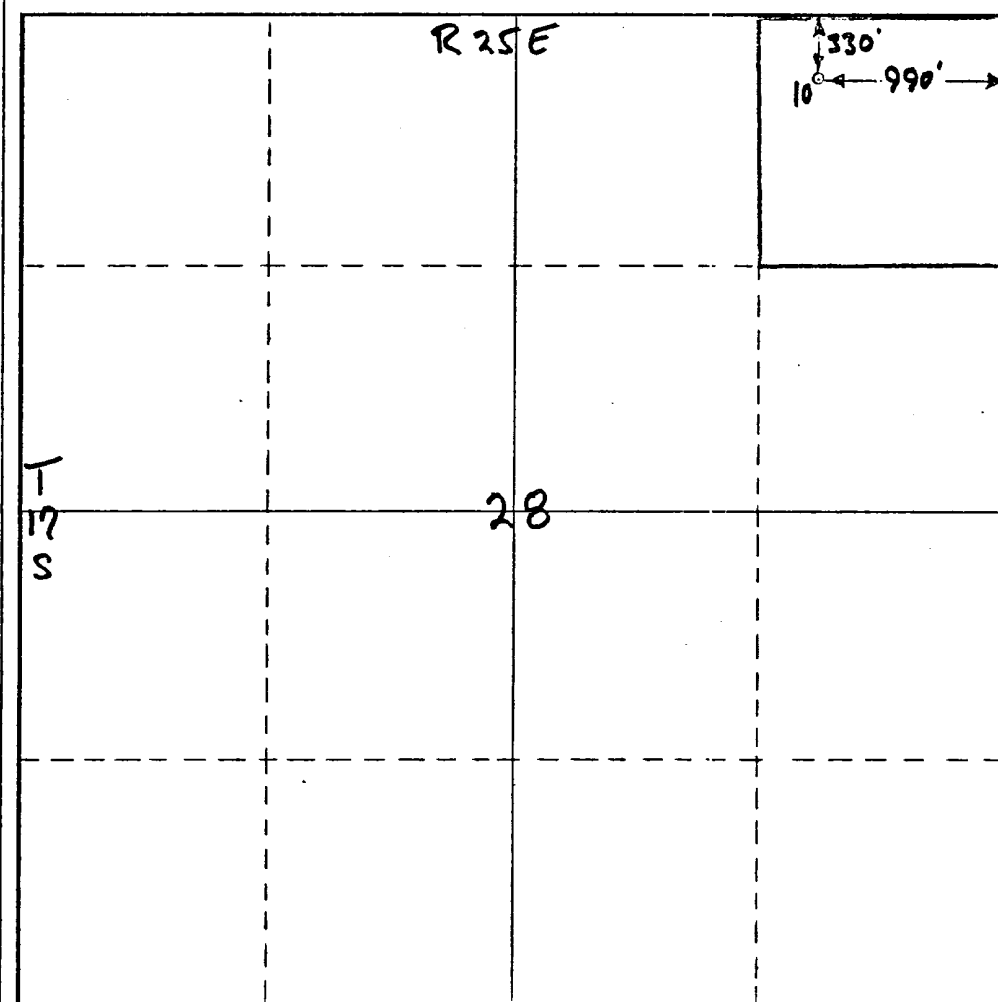
Operator Yates Petroleum Corporation			Lease Federal "BZ"		Well No. 10
Unit Letter A	Section 28	Township 17S	Range 25E	County Eddy	
Actual Footage Location of Well: 330 feet from the North line and 990 feet from the East line					
Ground Level Elev. 3554	Producing Formation San Andres		Pool Eagle Creek S.A.		Dedicated Acreage: 40 Acres

1. Outline the acreage dedicated to the subject well by colored pencil or hatchure marks on the plat below.
2. If more than one lease is dedicated to the well, outline each and identify the ownership thereof (both as to working interest and royalty).
3. If more than one lease of different ownership is dedicated to the well, have the interests of all owners been consolidated by communitization, unitization, force-pooling, etc?

☐ Yes ☐ No If answer is "yes," type of consolidation _____

If answer is "no," list the owners and tract descriptions which have actually been consolidated. (Use reverse side of this form if necessary.) _____

No allowable will be assigned to the well until all interests have been consolidated (by communitization, unitization, forced-pooling, or otherwise) or until a non-standard unit, eliminating such interests, has been approved by the Commission.



CERTIFICATION

I hereby certify that the information contained herein is true and complete to the best of my knowledge and belief.

Eddie M. Mahfood
Name

Eddie M. Mahfood

Position
Engineer

Company
Yates Pet. Corp.

Date
3-22-74

RECEIVED
I hereby certify that the information shown on this plat was plotted from field notes of a survey made by me or under my supervision, and that the same is true and correct to the best of my knowledge and belief.
U.S. GEOLOGICAL SURVEY
ARTESIAN NEW MEXICO
JAMES H. BROWN

Date Surveyed
March 22, 1974
Registered Professional Engineer
and/or Land Surveyor

James H. Brown
Certificate No.
542

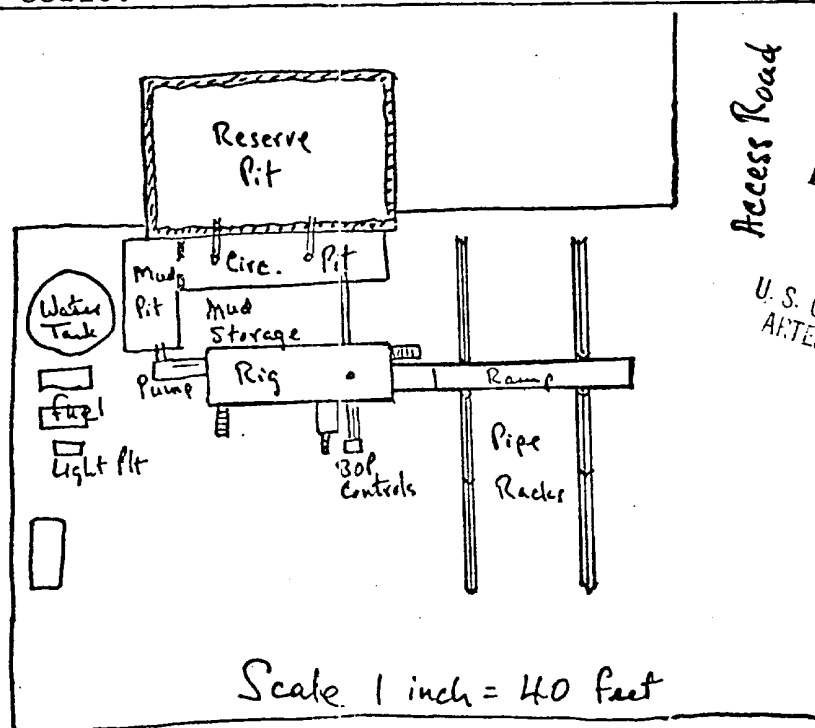
Yates Petroleum Corporation

Federal "BZ" No. 10 990' FEL 330' FNL

Section 28-T17S-R25E, Eddy County, New Mexico

Development plan for surface use to accompany, "Applications to Drill Onshore Oil, Gas, or Geothermal Steam Wells on Public Domain and acquired Federal Lands:"

1. Existing roads. See attached Topo map - Company maintained caliche roads.
2. Planned access roads. See attached Topo map. To blade road South from existing road and gravel surface where caliche outcrop is absent.
3. Location of wells. See attached Topo map. In-fill well in Eagle Creek San Andres Field.
4. Lateral roads to wells locations. See attached Topo map. This location is near tank battery and existing road; no lateral needed.
5. Location of tank batteries and flowlines. See attached Topo map. Tank battery in adjacent 40-acre spacing alongside main road.
6. Locations and types of water supply. Fresh water trucked from source well in Eagle Creek field.
7. Methods for handling waste disposal. Engine oil and mud in circulating pit, trash in trash barrel for subsequent approved disposal (City dump.)
8. Location of camps. N.A.
9. Location of airstrips. N.A.
10. Location layout to include position of the rig, mud tanks, reserve pits, burn pits, pipe racks, etc. See sketch below.
11. Plans for restoration of the surface. Mud pits will be dried and leveled or fenced, surface restored near original upon abandonment.
12. Any other information which the Approving Official considers essential to his assessment of the impact on the environment. Rolling grassland, grazing permit, environment protected to satisfaction of rancher, W.E. McIlhaney, 746-3034, Box 38, Routel, Artesia, New Mexico. 88210.



RECEIVED

MAR 20 1974
U.S. GEOLOGICAL SURVEY
ARTESIA, NEW MEXICO

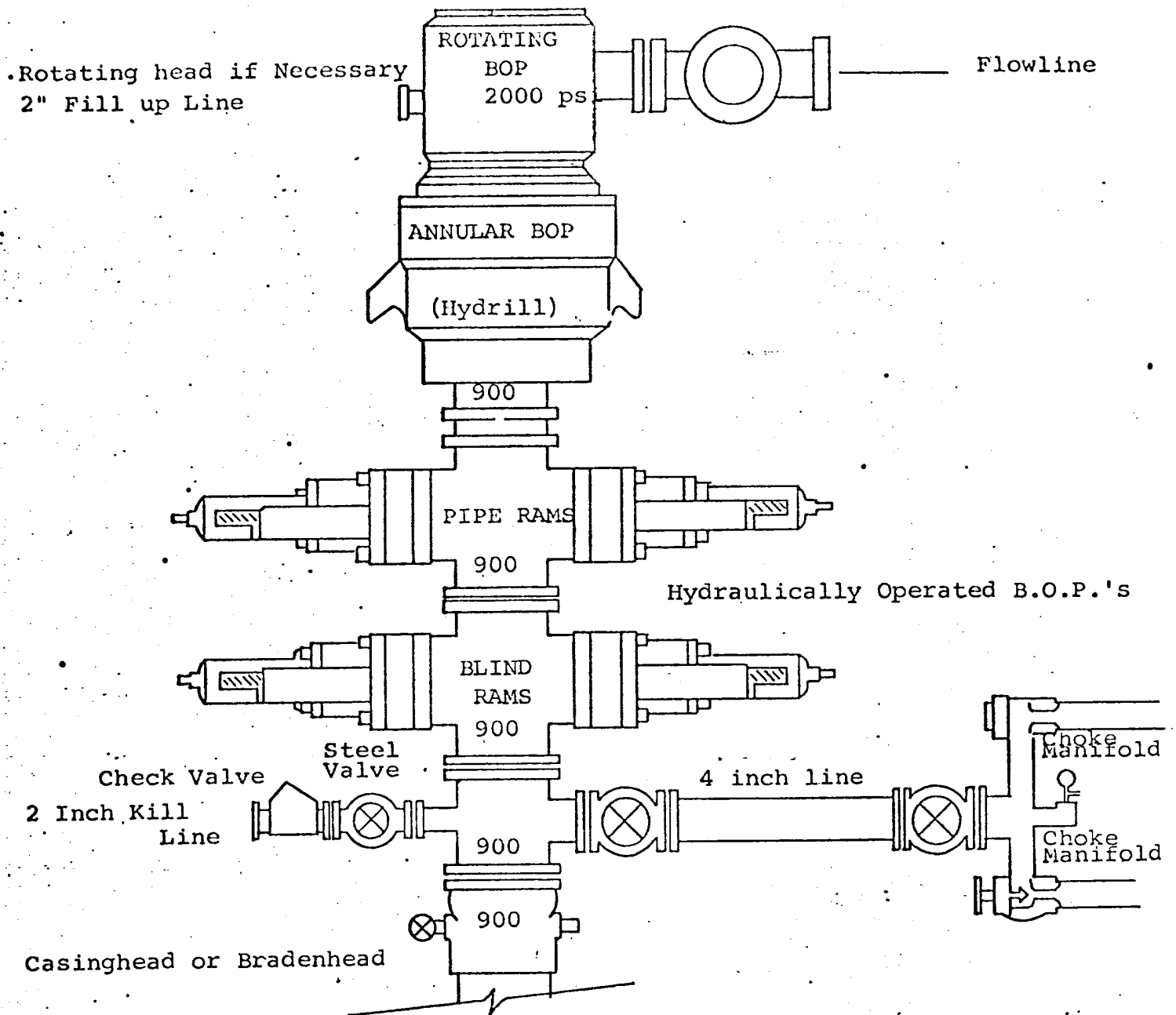
Submitted by
Yates Petroleum Corporation

Approved by
B.L.M., Dept. of Interior

by

Eddie M. Mahfood
Eddie M. Mahfood, Engineer

DIAGRAMMATIC SKETCH OF 3000 PSI BOP ASSEMBLY



THE FOLLOWING CONSTITUTE MINIMUM BLOWOUT PREVENTER REQUIREMENTS

1. All preventers to be hydraulically operated with secondary manual controls installed prior to drilling out from under casing.
2. Choke outlet to be a minimum of 4" diameter.
3. Kill line to be of all steel construction of 2" minimum diameter.
4. All connections from operating manifolds to preventers to be all steel hole or tube a minimum of one inch in diameter.
5. The available closing pressure shall be at least 15% in excess of that required with sufficient volume to operate the B.O.P.'s.
6. All Connections to and from preventer to have a pressure rating equivalent to that of the B.O.P.'s.
7. Inside blowout preventer to be available on rig floor.
8. Operating controls located a safe distance from the rig floor.
9. Hole must be kept filled on trips below intermediate casing. Operator not responsible for blowouts resulting from not keeping hole full.
10. Drill pipe must be installed and used below zone of first gas intrusion.
11. Anticipated Bottom Hole Pressure is less than 400 psi.
12. No Kelly Cock or manual valves necessary.
13. BOP's Tested prior to drilling casing shoe, TD reached estimated 24 hrs.

