

UNITED STATES  
DEPARTMENT OF THE INTERIOR  
GEOLOGICAL SURVEY

30-015-21170

## APPLICATION FOR PERMIT TO DRILL, DEEPEN, OR PLUG BACK

1a. TYPE OF WORK DRILL ☒ DEEPEN ☐ PLUG BACK ☐b. TYPE OF WELL  
OIL ☒ GAS ☐ OTHER ☐ SINGLE ZONE ☐ MULTIPLE ZONE ☐2. NAME OF OPERATOR  
JACK J. GRYNBERG3. ADDRESS OF OPERATOR  
1050-17th Street, Suite 1950, Denver, Colorado 802024. LOCATION OF WELL (Report location clearly and in accordance with any State requirements.)  
At surface: 990 FSL 1650 FWL (SE SW)  
At proposed prod. zone: Section 28 T 17 S - R 25 E  
(As Above)14. DISTANCE IN MILES AND DIRECTION FROM NEAREST TOWN OR POST OFFICE\*  
Approx. 5 miles southwest of Artesia, New Mexico15. DISTANCE FROM PROPOSED\*  
LOCATION TO NEAREST  
PROPERTY OR LEASE LINE, FT.  
(Also to nearest drg. unit line, if any) 990'18. DISTANCE FROM PROPOSED LOCATION\*  
TO NEAREST WELL, DRILLING, COMPLETED,  
OR APPLIED FOR, ON THIS LEASE, FT. None

21. ELEVATIONS (Show whether DF, RT, GR, etc.)

23. PROPOSED CASING AND CEMENTING PROGRAM

SIZE OF HOLE	SIZE OF CASING	WEIGHT PER FOOT	SETTING DEPTH	QUANTITY OF CEMENT
13 3/4"	10 3/4"	32#	150'±	Circulated
9 7/8"	7"	20#	1125'±	Circulated
6 1/4"	4 1/2"	9.5# & 10.5#	1500'±	Circulated

Proposed program is to drill 13 3/4" hole to 150'± and run 10 3/4" casing to cover gravel and fine sands. Hole size will then be reduced to 9 7/8", and 7" casing will be set 100' below the artesian water zone. Hole size will be reduced to 6 1/4" to an estimated total depth of 1500' in the San Andres formation. All substantial shows will be properly evaluated, and E-logs will be run. If commercial production is indicated, a long string of 4 1/2" casing will be run, and a completion will be attempted.

Rotary tools will be equipped with adequate blowout preventers. This equipment will be pretested prior to drilling, and tested daily with results recorded.

IN ABOVE SPACE DESCRIBE PROPOSED PROGRAM: If proposal is to deepen or plug back, give data on present production and proposed new productive zone. If proposal is to drill or deepen directionally, give pertinent data on subsurface locations and measured and true vertical depths. Give blowout prevention program, if any.

24. SIGNED Cecil D. Gritz TITLE Petroleum Engineer DATE 4/1/74

(This space for Federal or State office use)

PERMIT NO. \_\_\_\_\_ APPROVAL DATE \_\_\_\_\_

APPROVED BY \_\_\_\_\_

TITLE \_\_\_\_\_

COMMISSIONER OF APPROVAL, IF ANY:

APR 12 1974

T. L. BEEKMAN

ACTING DISTRICT ENGINEER

THIS APPROVAL IS RECORDED IF OPERATIONS  
ARE NOT COMMENCED WITHIN 3 MONTHS.  
JUL 12 1974  
See Instructions On Reverse Side

DECLARED WATER BASIN  
10 3/4"  
CEMENT BEHIND THE 2"  
CASING MUST BE CIRCULATED

NOTIFY USGS IN SUFFICIENT TIME TO  
CESS CEMENTING THE 7" CASING.

RECEIVED  
APR 4 1974  
U.S. GEOLOGICAL SURVEY  
ARTESIA, NEW MEXICO

NE MEXICO OIL CONSERVATION COMMISSION  
WELL LOCATION AND ACREAGE DEDICATION PLAT

Form C-102  
Supersedes C-128  
Effective 1-1-65

All distances must be from the outer boundaries of the Section.

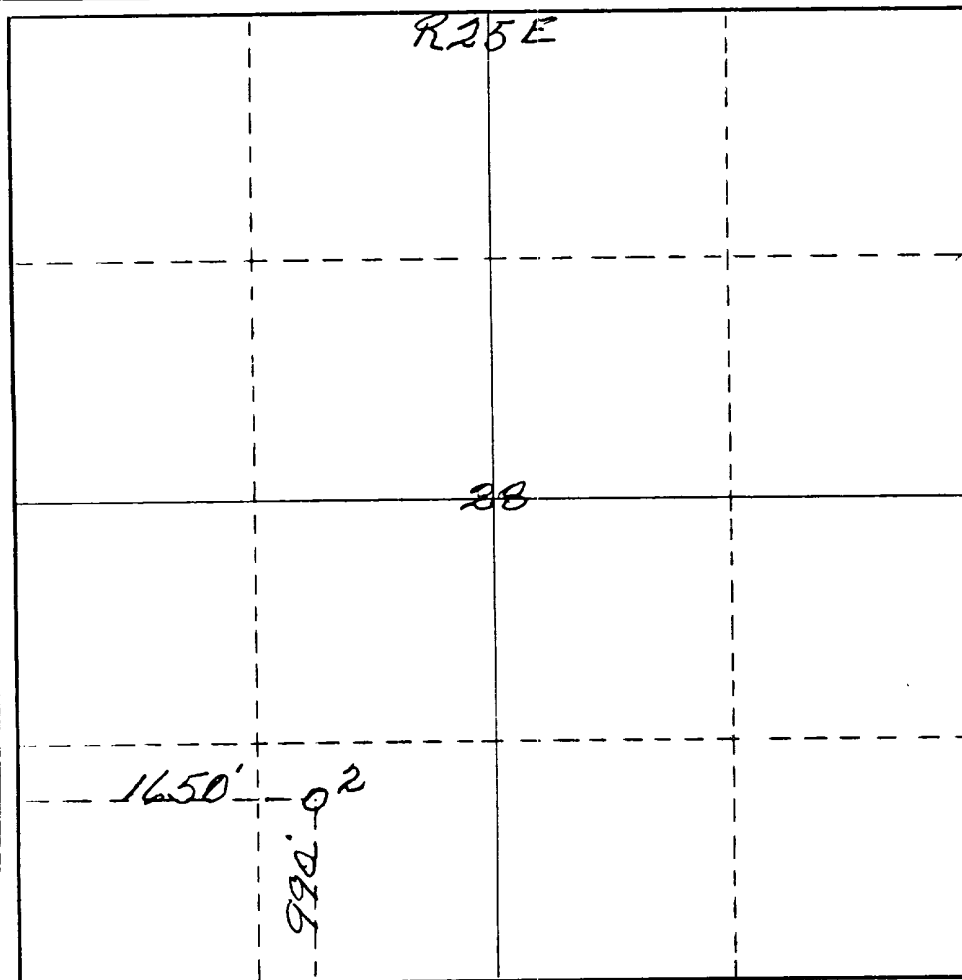
Owner <b>Jack J. Grynberg</b>			Lease <b>Federal "GP"</b>			Well No. <b>2</b>
Section <b>N</b>	Section <b>28</b>	Township <b>17 South</b>	Range <b>25 East</b>	County <b>Eddy</b>		
Actual Footage Location of Well: <b>990</b> feet from the <b>South</b> line and <b>1650</b> feet from the <b>West</b> line						
Ground Level Elev. <b>3572</b>	Producing Formation		Pool	Dedicated Acreage: <b>40</b> Acres		

- Outline the acreage dedicated to the subject well by colored pencil or hachure marks on the plat below.
- If more than one lease is dedicated to the well, outline each and identify the ownership thereof (both as to working interest and royalty).
- If more than one lease of different ownership is dedicated to the well, have the interests of all owners been consolidated by communitization, unitization, force-pooling, etc?

☐ Yes ☐ No If answer is "yes," type of consolidation \_\_\_\_\_

If answer is "no," list the owners and tract descriptions which have actually been consolidated. (Use reverse side of this form if necessary.) \_\_\_\_\_

No allowable will be assigned to the well until all interests have been consolidated (by communitization, unitization, forced-pooling, or otherwise) or until a non-standard unit, eliminating such interests, has been approved by the Commission.



CERTIFICATION

I hereby certify that the information contained herein is true and complete to the best of my knowledge and belief.

Name

Position

Company

Date

I hereby certify that the well location shown on this plat was plotted from field notes of actual surveys made by me or under my supervision, and that the same is true and correct to the best of my knowledge and belief.

Date Surveyed

Registered Professional Engineer and/or Land Surveyor

Certificate No.

**542**

LESSEE'S DEVELOPMENT PLAN FOR SURFACE USE

(For U. S. Geological Survey)

ITEM 1: EXISTING ROADS AND LOCATION OF MAIN HIGHWAY EXIT

A main highway exit is located approximately 3½ miles west of Artesia, New Mexico on Highway 83. From this point a lateral secondary road leads south and west to Section 28 (See Exhibit 1).

ITEM 2: PLANNED ACCESS ROADS

We plan to grade and maintain an existing access road which leads south from the lateral road. An extension of this access road to the location will be constructed and maintained. This road is intended to support only the necessary vehicular traffic needed to conduct drilling operations. (See Exhibit 1)

ITEM 3: LOCATION OF WELL

1650 FWL 990 FSL  
SE/SW Sec. 28, T 17 S - R 25 E, Eddy County, New Mexico  
(See attached plat and Exhibit 1)

ITEM 4: LATERAL ROADS TO WELL LOCATION

A lateral secondary road leads south and west to Section 28 (See Exhibit 4)

ITEM 5: LOCATION OF TANK BATTERIES AND FLOW LINES

Tank battery will be constructed on the drilling location as approved by all parties before installation. Flow lines, if any, will follow right-of-way approved by Bureau of Land Management at a later date.

ITEM 6: LOCATION AND TYPE OF WATER SUPPLY

To be determined. This information will follow.

ITEM 7: WASTE DISPOSAL

Adequate deep burn pits for ordinary combustible trash, including protected and enclosed sumps for oil and other toxic wastes, if any. Burning of trash to be kept at a minimum.

ITEM 8: LOCATION OF CAMPS

None planned.

ITEM 9: LOCATION OF AIRSTRIPS

None planned.

**RECEIVED**  
APR 4 1974  
U. S. GEOLOGICAL SURVEY  
ARTESIA, NEW MEXICO

ITEM 10: LOCATION AND RIG LAYOUT  
ATTACHED

ITEM 11: SURFACE RESTORATION

Location will be restored to original physical contour, replanted and/or reseeded to original type vegetation to prevent erosion.

ITEM 12: MISCELLANEOUS INFORMATION PERTINENT TO ENVIRONMENTAL IMPACT

All areas of pits, sumps, and other excavations will be fenced and flagged during and after operations until such time as they can be back-filled, levelled and replanted. Vehicular traffic will be restricted only to the approved access routes and used only when necessary.

**RECEIVED**  
APR 3  
U.S. GEOLOGICAL SURVEY  
ARTESIA, NEW MEXICO

RECEIVED

APR 1 1994  
FBI NEW YORK  
COMMUNICATIONS SECTION

Jack J. Grynberg  
Federal "GR" #2  
Eagle Creek S.A.  
Eddy County, N. Mexico

OPERATORS DRILLING PLAN

(For U.S. Geological Survey)

1. Surface Casing

10 3/4" 32.74# 150± H-40 new

2. Casingheads, Flanges & Spools

10" 2000 psi WP csg. head  
10" 2000 psi WP csg. spool  
2000 psi WP flanges, valves, and flow tees.

3. Intermediate Casing

7" 20# 1125'± K-55 used

4. Blowout Preventors

10" 900 2000 psi Double Hyd

Necessary fill, kill, and choke lines to insure complete control and safety.

5. Auxiliary Equipment

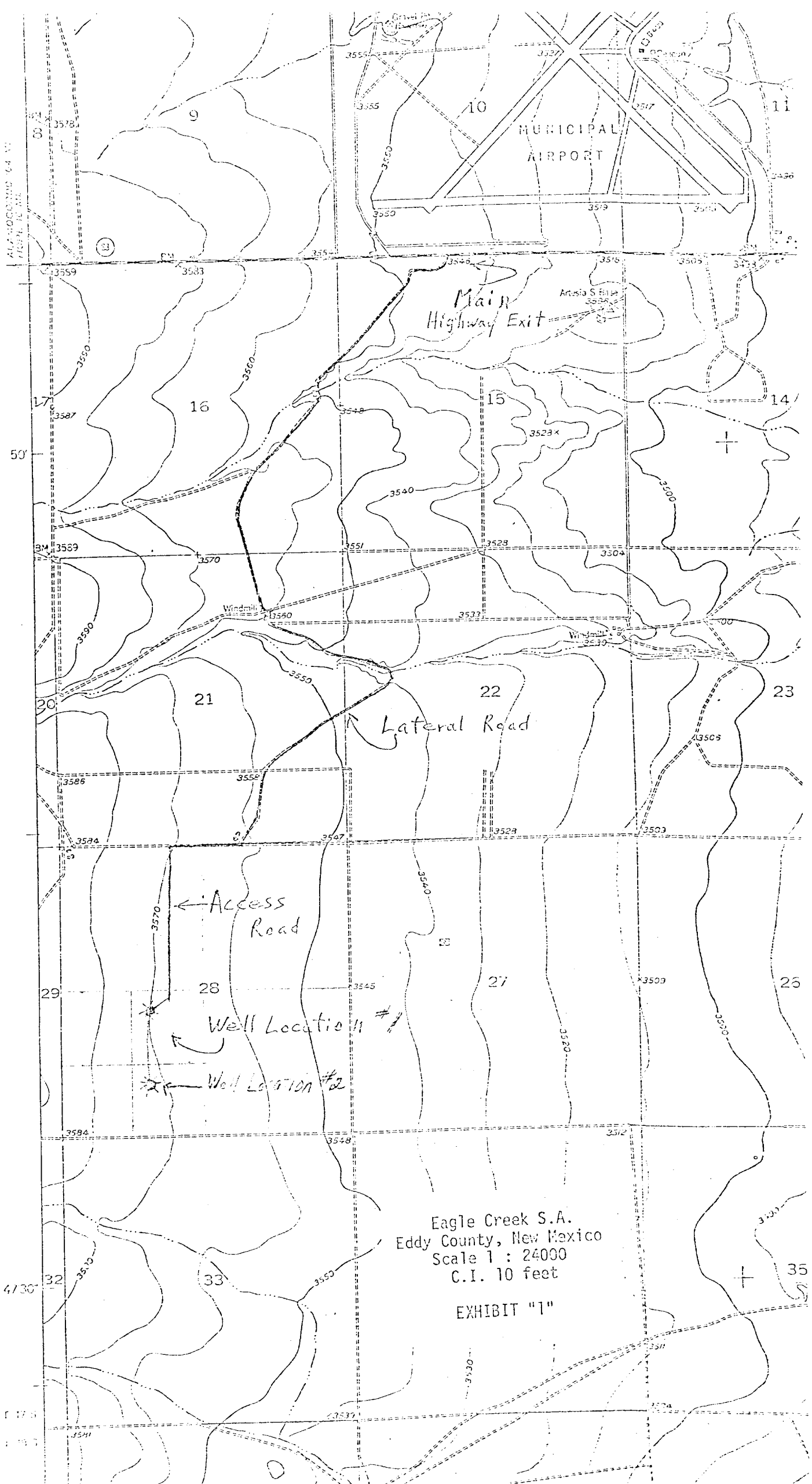
- a. Kelly Cork
- b. Stabbing Valve
- c. Additional items as needed.

6. Maximum Expected Pressures

\_\_\_\_\_ 675 psi \_\_\_\_\_ at \_\_\_\_\_ TD \_\_\_\_\_  
\_\_\_\_\_ at \_\_\_\_\_

7. Drilling Fluid Type

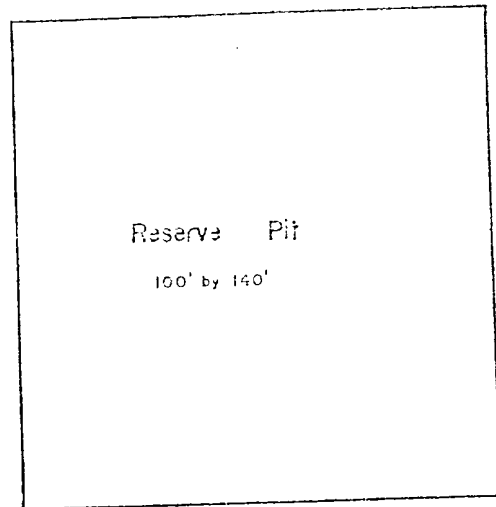
Water base



Eagle Creek S.A.  
Eddy County, New Mexico  
Scale 1 : 24000  
C.I. 10 feet

EXHIBIT "1"

DRILLING LOCATION LAYOUT  
Schematic  
(Not Scaled)



Note: Mud pits will be filled. Drilling equipment removed and surface surrounding the pad cleaned up and leveled after the well is completed. Waste material to be buried in the mud pit.

